



GEOGRAM*

(Synthetic Seismogram)

Company: ESSO AUSTRALIA LTD.
 Well: SAWBELLY-1
 Field: WILDCAT
 Country: AUSTRALIA
 Reference No: 540770
 Date Logged: 22-03-90
 Location: 38 22' 31" S 148 02' 05" E
 Elevations: KB: 21.00 DF: 20.70 GL: 43.00
 Permanent Datum: MSL
 Depth Units: METERS

LOG INFORMATION
 Logging Datum: 21.00
 Seismic Reference Datum: 0.00
 Sonic Calibration By Check Shots: YES
 Sonic Edited By Analyst: YES
 Two-Way Time Sample Interval: 2 ms
 Environment: offshore

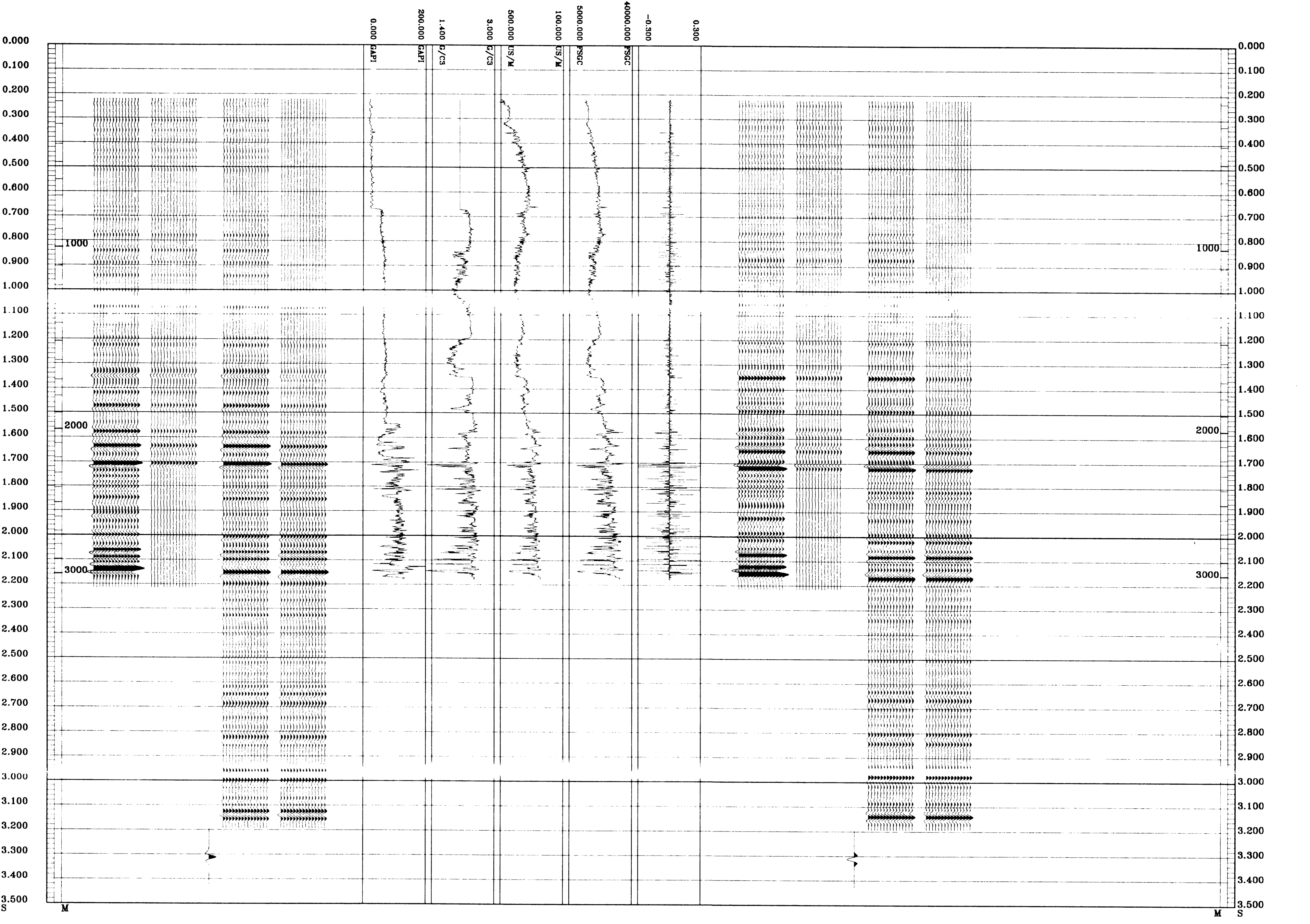
True Vertical Depth Corrections Applied:
 Source of True Vertical Depth Data:
 Maximum Hole Deviation:

Bed	Date	Top Depth	Base Depth	Correction	Top Depth	Bottom Depth
1	07-03-90	BHC	171.2 @ 815 M	20 @ 181 M	151 M	815 M
2	22-03-90	BHC	121.4 @ 2968 M	13.3 @ 2968 M	798 M	3042 M
1	22-03-90	GM	40 M	5 M BELOW SL	10 M BELOW SL	42

GEOGRAM MODEL ASSUMPTIONS
 Equal time slice model of horizontal plane layers
 Plane acoustic waves at normal incidence
 No intrinsic attenuation
POLARITY
 An upgoing wave, reflected by an increase in acoustic impedance with depth, is displayed as a white trough under normal polarity
SIGNATURES
 All signatures displayed in the Geogram results correspond to a wavelet convolved with a reflection coefficient of 0.5 (A decrease in acoustic impedance with depth)
REMARKS

25 HERTZ ZERO PHASE RICKER WAVELET

MULTIPLES ONLY REVERSE POLARITY	
PRIMARYS AND MULTIPLES REVERSE POLARITY	
PRIMARYS WITH TRANSMISSION LOSS REVERSE POLARITY	
PRIMARYS REVERSE POLARITY	
REFLECTION	
ACOUSTIC IMPEDANCE	
SONIC	
DENSITY	
GAMMA RAY	
MULTIPLES ONLY NORMAL POLARITY	
PRIMARYS AND MULTIPLES NORMAL POLARITY	
PRIMARYS WITH TRANSMISSION LOSS NORMAL POLARITY	
PRIMARYS NORMAL POLARITY	



Schlumberger

COMPANY: ESSO AUSTRALIA LTD.
 FIELD: WILDCAT
 WELL: SAWBELLY-1
 COUNTRY: AUSTRALIA