



AUSTRALIA - SOUTH COAST

TO GABO ISLAND INCLUDING TASMANIA

DEPT. NAT. RES & ENV
PE906193

DEPTHS IN FATHOMS

Scale 1:1,000,000 at lat. 27° 15' S

Depths in fathoms (under eleven in fathoms and feet)
are related to Indian Spring Low Water
Depths in feet above Mean Higher High Water
are related to the Australian Mean Sea Level.

Depths are based on surveys to 1970. Admiralty surveys, seismic
soundings and passage soundings to 1970.

WELLS

Temporarily abandoned wells may have
wellhead gear projecting up to about 26 feet (8
metres) from the sea bed.

Submerged production wells are marked by
light-buoys.

CAUTION - OMISSIONS In the areas covered
by larger scale charts these must be consulted
for buoys, lights, beacons and wrecks as on this
chart only the principal aids to navigation are
shown.

Booth Hill 1877

Mag Variation 12 50'E (1974)

Corner Inlet

Wilson's Promontory

South East Pt

Redondo I

Curtis Group

Kent Group

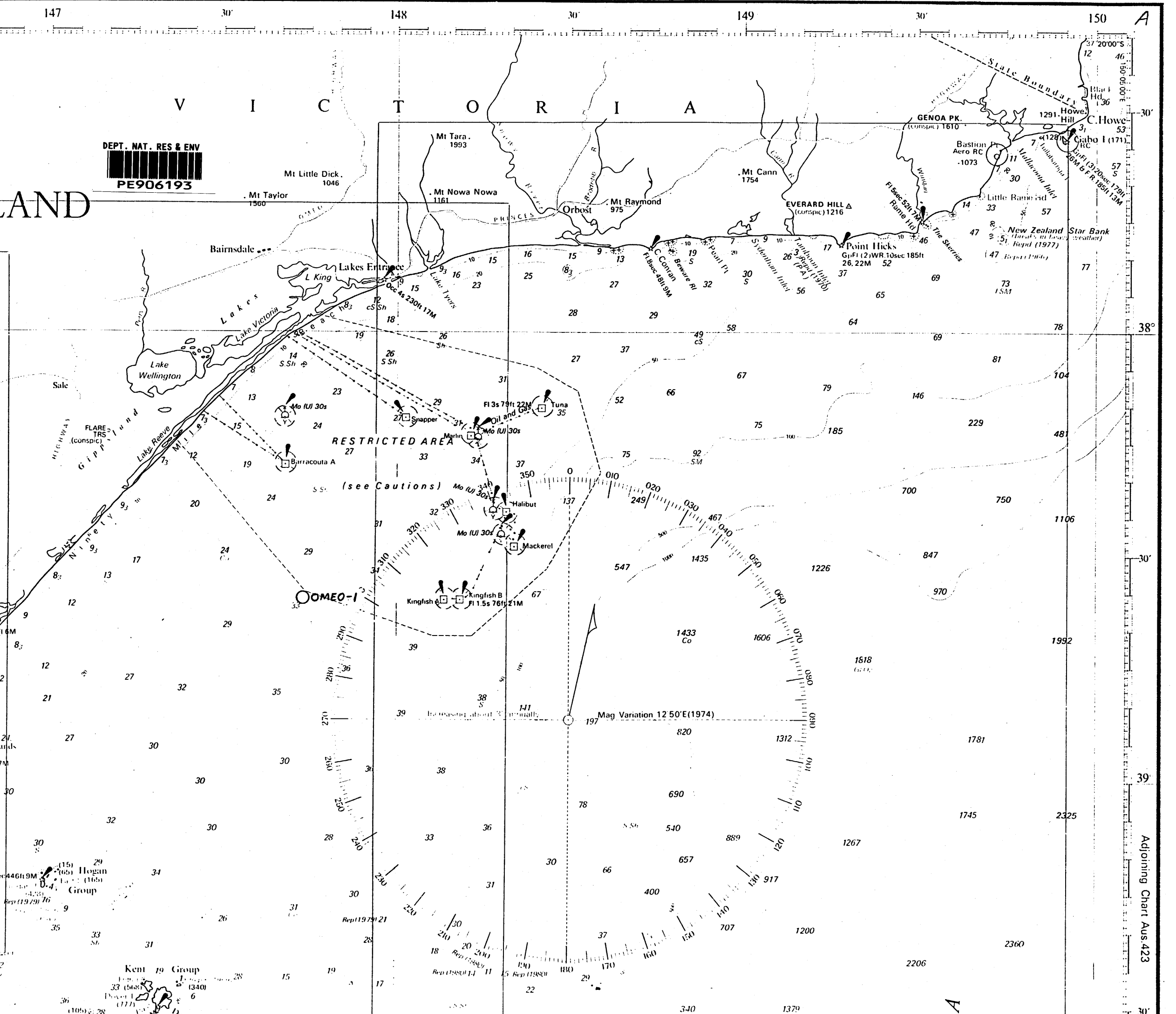
Deal I

Deal I

Deal I

Deal I

Deal I



Adjoining Chart Aus 423