



WELL KINGFISH NO.6
 COMPANY ESSO
 COUNTY GIPPSLAND BASIN
 STATE VICTORIA

LEGEND
 DEPTH CORRESPONDS TO DRILL
 PIPE MEASUREMENTS.
 NB NEW BIT
 NCB NEW CORE BIT
 DST DRILL STEM TEST
 NR NO RETURNS
 TG TRIP GAS
 CO CIRCULATE OUT RETURNS

LITHOLOGY

SAND	GRANITE WASH	LIME STONE	CHERT
SHALE	GYP ANHYDRITE	DOLOMITE	LIGNITE

CUTTINGS ANALYSIS

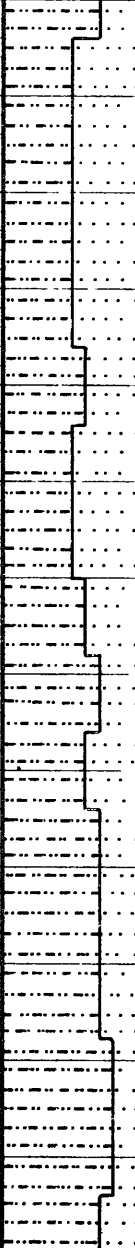
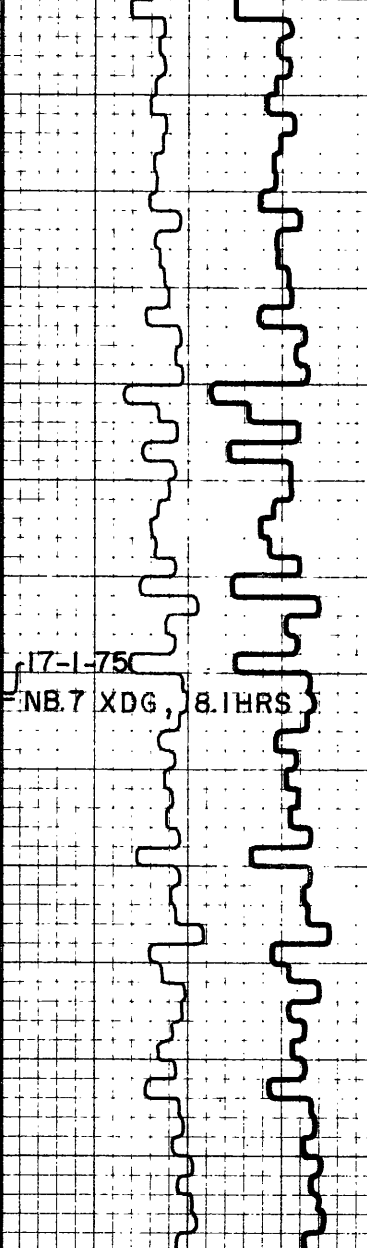
TOTAL GAS _____
 METHANE _____
 LIQUID HYDROCARBONS (C₆₊) ----- 6+ -----

ppm HYDROCARBONS IN MUD M=1000

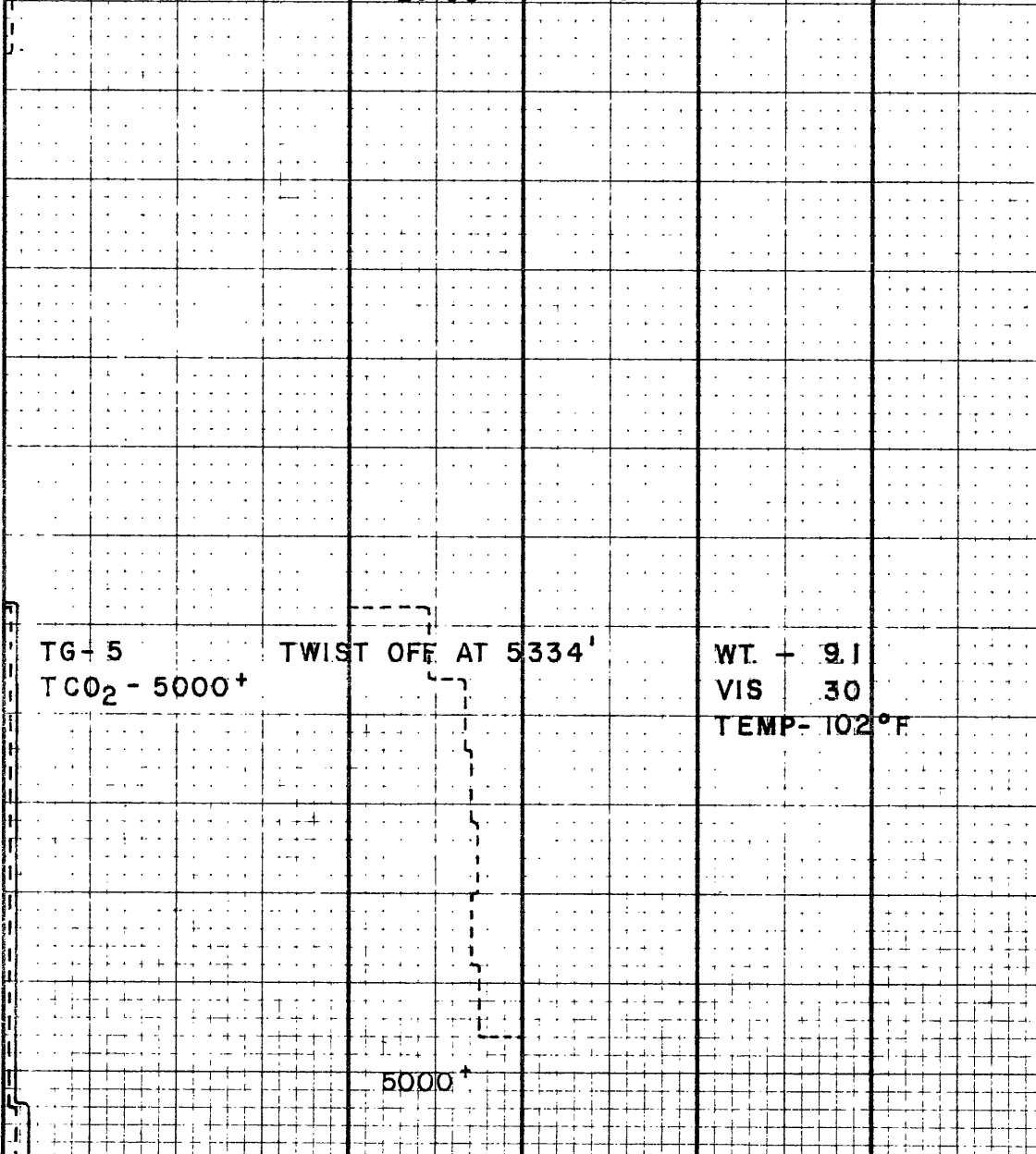
DRILLING RATE
 FT. PER HR MIN. PER FT.
 150 100 50
 d-1.5 2.0 2.5
 VISUAL POROSITY
 GST

LITHOLOGY

C ₁			C ₂		C ₃		C ₄		C ₅₊	
OIL	IM	5M	10M	O	IM	O	IM	O	IM	OIL
TSG	2.5	5.0	7.5	0	25.00	0	2.5	0		TSG



5200
 5300
 5400



SILTSTONE: MED. GY.
 FM, V. CALC.
 SANDSTONE: WH-
 LT-GY, V. FINE-FINE
 GRN. FM.
 POORLY STD.

TG-5 TWIST OFF AT 5334'
 TCO₂ - 5000+
 WT. - 9.1
 VIS 30
 TEMP - 102°F

5000↑

DEPT. NAT. RES & ENV
 PE603520