



WELL LOGGING SERVICE

WELL KINGFISH NO 5
COMPANY ESSO
COUNTY GIPPSLAND BASIN
STATE VICTORIA

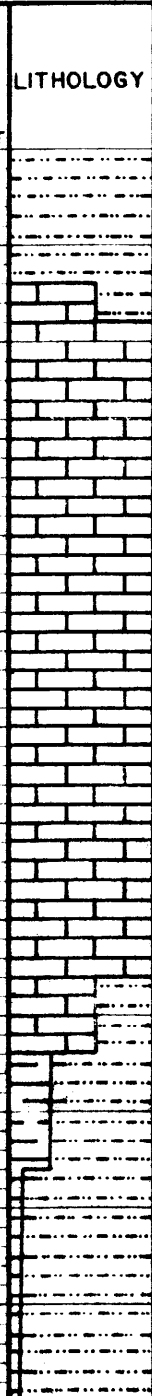
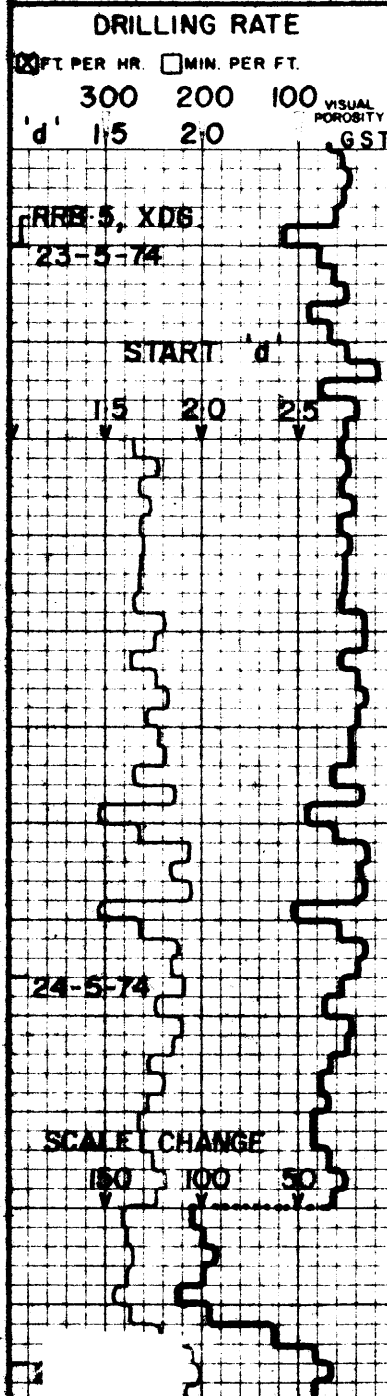
LEGEND
DEPTH CORRESPONDS TO DRILL
PIPE MEASUREMENTS.
NB NEW BIT
NCB NEW CORE BIT
DST DRILL STEM TEST
NR NO RETURNS
TG TRIP GAS
CO CIRCULATE OUT RETURNS

LITHOLOGY
SAND
GRANITE WASH
LIME STONE
CHERT
SHALE
GYP ANHYDRITE
DOLOMITE
LIGNITE

14
25

CUTTINGS ANALYSIS

TOTAL GAS _____
METHANE _____
LIQUID HYDROCARBONS
(C₆₊) _____ 6+



ppm HYDROCARBONS IN MUD M=1000

| DEPTH (ft) | C ₁ | | | | C ₂ | | C ₃ | | C ₄ | | C ₅₊ | |
|------------|----------------|----|----|-----|----------------|----|----------------|----|----------------|----|-----------------|----|
| | 0 | 1M | 5M | 10M | 0 | 1M | 0 | 1M | 0 | 1M | 0 | 1M |
| 4500 | NO TG | | | | | | | | | | | |
| 4600 | NO GAS | | | | | | | | | | | |
| 4700 | | | | | | | | | | | | |
| 4800 | | | | | | | | | | | | |

OIL TSG
SILTST A/A
LMST: LT. BRN.-LT.GY.
MICRITIC.
LMST: A/A, SILTY
SILT: LT. GY., HD.-SFT,
CALC., MICRITIC
MDST: LT GY., V.SFT
CALC

DISPLACE W/ LIGNOSULFONATE
MUD AT 4691'
HANG OFF, WAIT ON WEATHER
WT 9.6
VIS 4.4
PH 9.5
F 5.4
CL 4000
TEMP 90°F

DEPT. NAT. RES & ENV
PE603494