

**GSI DIGITAL PROCESSING CENTRE**  
 SYDNEY, N.S.W., AUSTRALIA

1. SAMPLE PERIOD: 4 ms. 2. TAR:  $\beta = 10$  db,  $\alpha = 3.5$  db/sec.  
 Gate = 0 to 4000 ms.

3. NMO Equalization gate 2000 to 3000 ms.

4. DECON 64 pts. 4 ms. dec. Design gate 200 to 2732 ms.  
 No. of gates/trace 2. Design gate 1466 to 4000 ms.

5. DIGITAL FILTER 35 pts. 4 ms. dec. Hz.

6. DPS , OWBS , TVD , DCN , AR2 , DGF , TVF , M-4

7. TIAC Req. 185. 8. Hold Tape 229. 9. P/B Gain -9 db.

GSI Input Crew 851 Date JAN '69

**ESSO STANDARD OIL (AUST.) PTY. LTD.**  
 SYDNEY, N.S.W., AUSTRALIA

AREA GIPPSLAND LINE G69A-263

RECORDING PARAMETERS: 8 Pops/S.P. S.P. off GP24

Source AQUAPULSE, Charge Size lbs.

Fill Time 1.5 sec., Oxy. 50 lbs., Prop. 20 lbs.

Cable Length 7544 ft., Group Interval 328 ft.

S.P. Interval 656 ft.

Pops/Vertical Sum 4:1 Processed 12 Fold.

Recording Filters 100 - 5 Hz.

WGC Field Crew 64 Date JAN '69

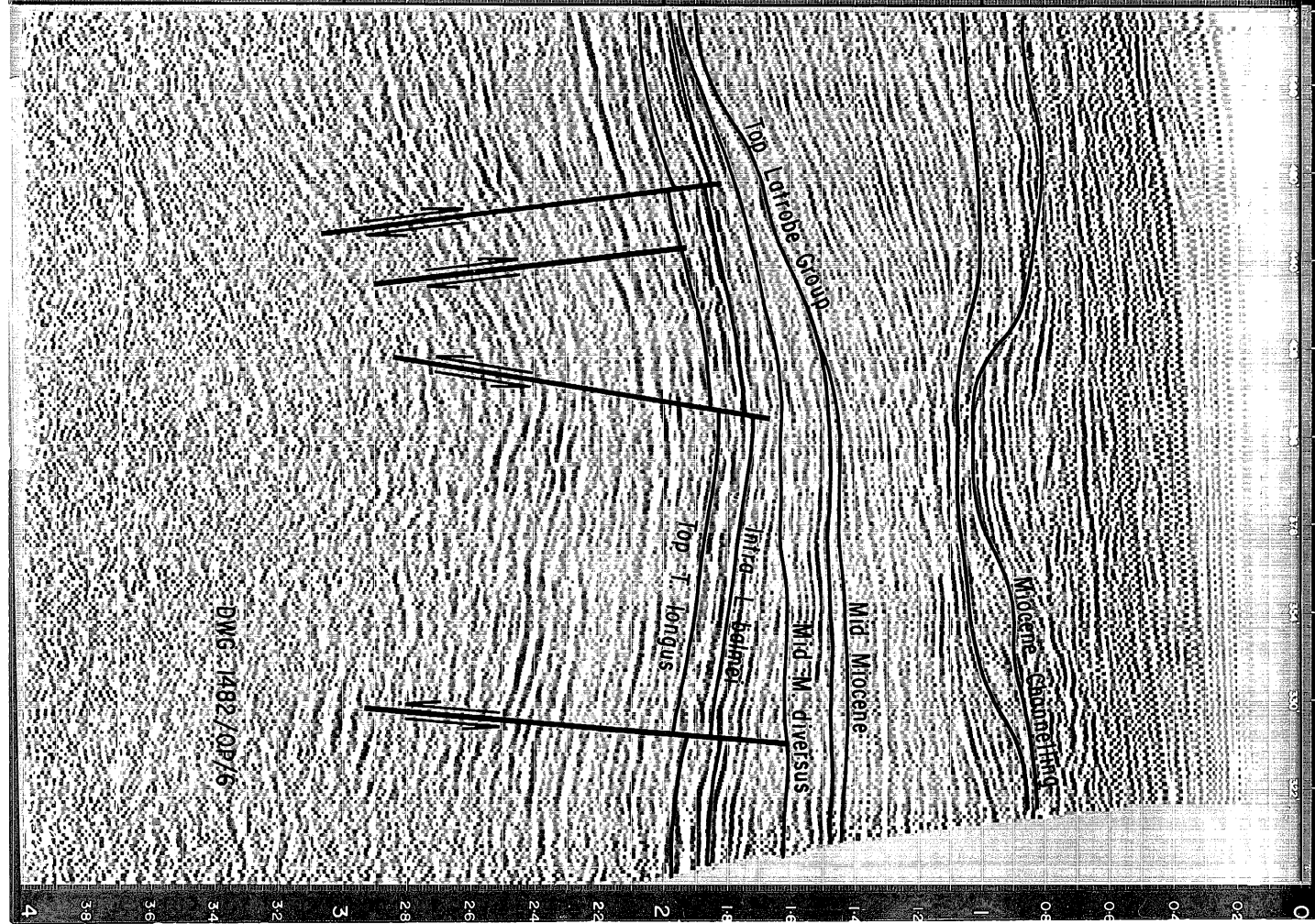
DEPT. NAT. RES & ENV

PE904933

MAGNETOMETER PLOT

60500  
60600  
60700  
60800  
60900

4 3.8 3.6 3.4 3.2



LINE G69A-263

Scale: 1 inch = 200 ft. (1:15840)

12 FOLD STACK

TVD 29, 601ft, 400m  
 50 600  
 10 50, 800 "

ET-68 669A-256  
 V6 669A-257  
 V6 669A-250

61 67 73 79 85 91 97 103 109 114