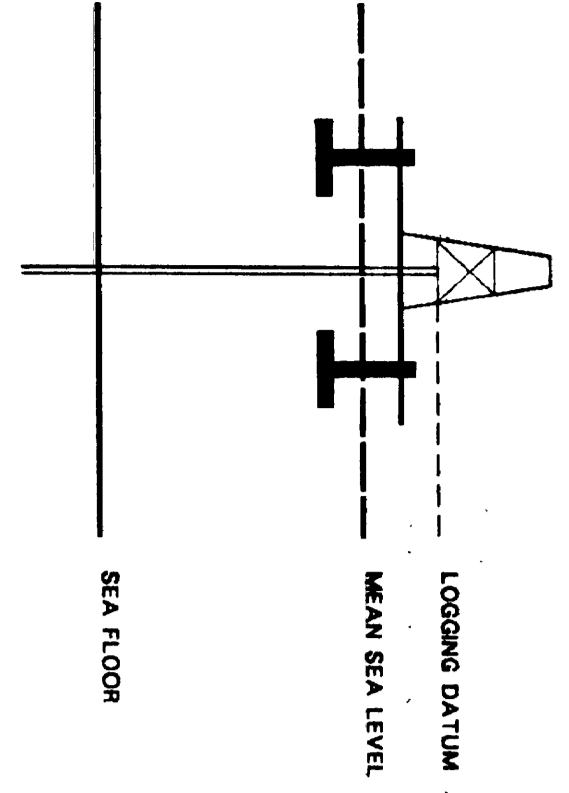


SEISMIC CALIBRATION LOG
(Adjusted Continuous Velocity Log)



Company: ESSO AUSTRALIA LTD.
Well: DRUMMER #1 *Espresso Recovery Field*
Field: WILDCAT
Country: AUSTRALIA
Reference No: 54049 Interval: 0.00 to 2568.00
Date Logged: 13/10/85 Date Processed: 30/10/85
Location: 038 28' 33.99" S 148 14' 58.40" E
Elevations: KB: 210 M DE: 207 M GL: -74.0 M
Permanent Datum: MSL Depth Units: METRES
FIELD RECEIVING: Operator: D. DAWSON Location: VCA Program Version: 28.4 85/10/10
COMPUTATION: Analyst: M. SANDERS Centre: AGJ Baseline: 12.4
Logging Datum: ELEVATION ABOVE MEAN SEA LEVEL: 207 M
Sismic Reference Datum: MSL
Sea Floor: -74.0 M

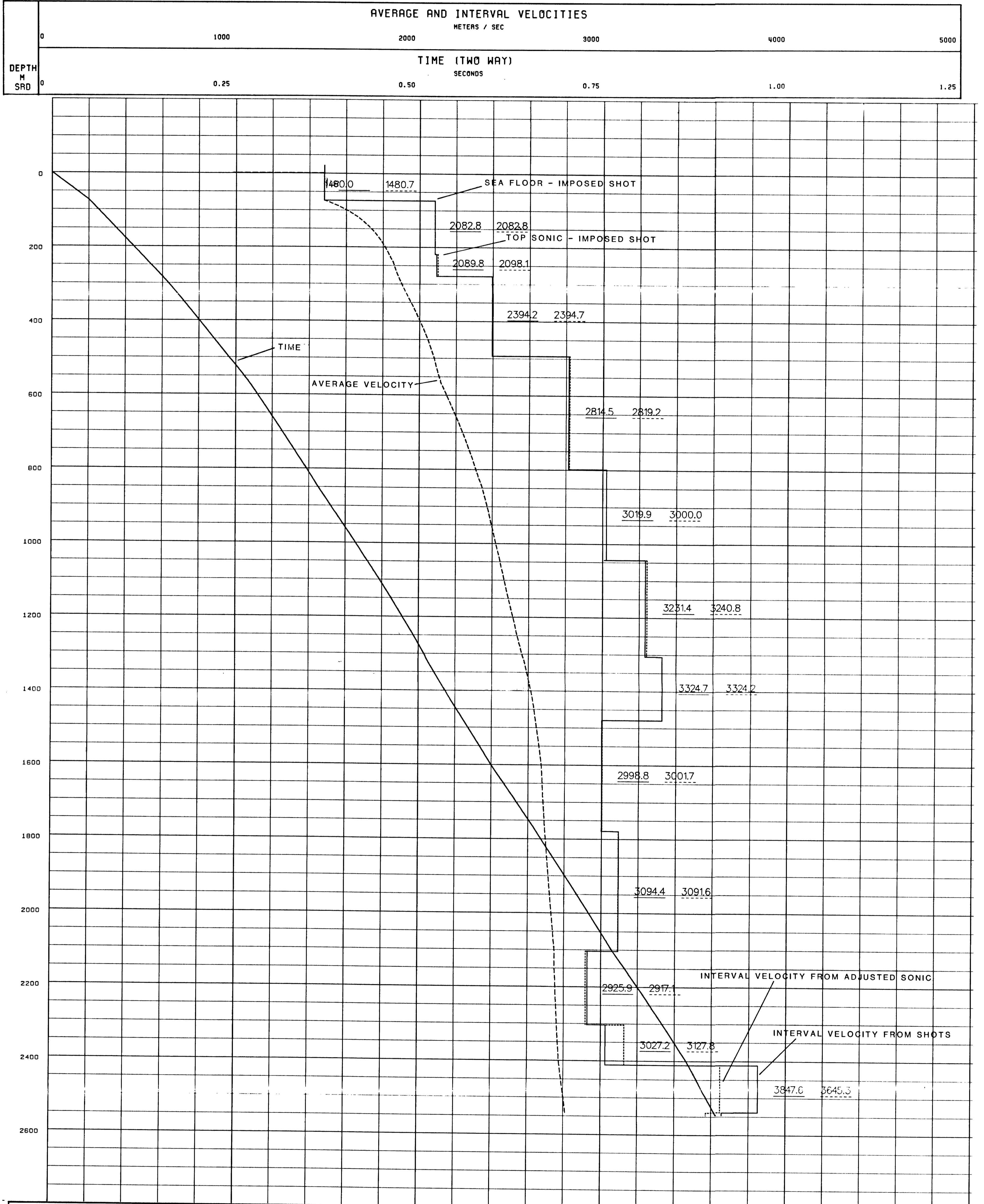


Total No. of Check Levels: 11 (from 300 to 2560 m below DF)
Velocity Log Depth Reference: SRD
Velocity Log Time Reference: SRD

Run	Date	Tool Type	Bit Size	Core Size	Top Depth	Bottom Depth
1	04/10/85	SLS	20" @ 288 M	17 1/2" @ 820 M	298 M	877 M
2	13/10/85	SLS	13 3/8" @ 820 M	12 1/4" @ 2570 M	803 M	2568 M

Remarks:
Sonic log interval 240-2568 metres below DF
Directly log pit 942-2565, 1305-2418 & 2346 - 2568 metres
Processed shot at sea floor and top of sonic

The well name, location and borehole reference data were furnished by the customer.
All interpretations are opinions based on inferences from electrical or other measurements and we cannot, and do not guarantee the accuracy or correctness of any interpretations, and we shall not, except in the case of gross or willful negligence on our part, be liable or responsible for any loss, costs, damages or expenses incurred or sustained by anyone resulting from any interpretations made by any of our officers, agents or employees. These interpretations are also subject to Clause 4 of our General Terms and Conditions as set out in our current Price Schedule.



COMPANY ESSO AUSTRALIA LTD.
FIELD WILDCAT
WELL DRUMMER #1
COUNTRY AUSTRALIA