

SHELL AUSTRALIA

WELL: DEVILFISH-1

VERT. SCALE: 10CM/SECOND.
NON-LINEAR DEPTH SCALE,
100 UNITS PER DIVISION

DATUM : SEA LEVEL

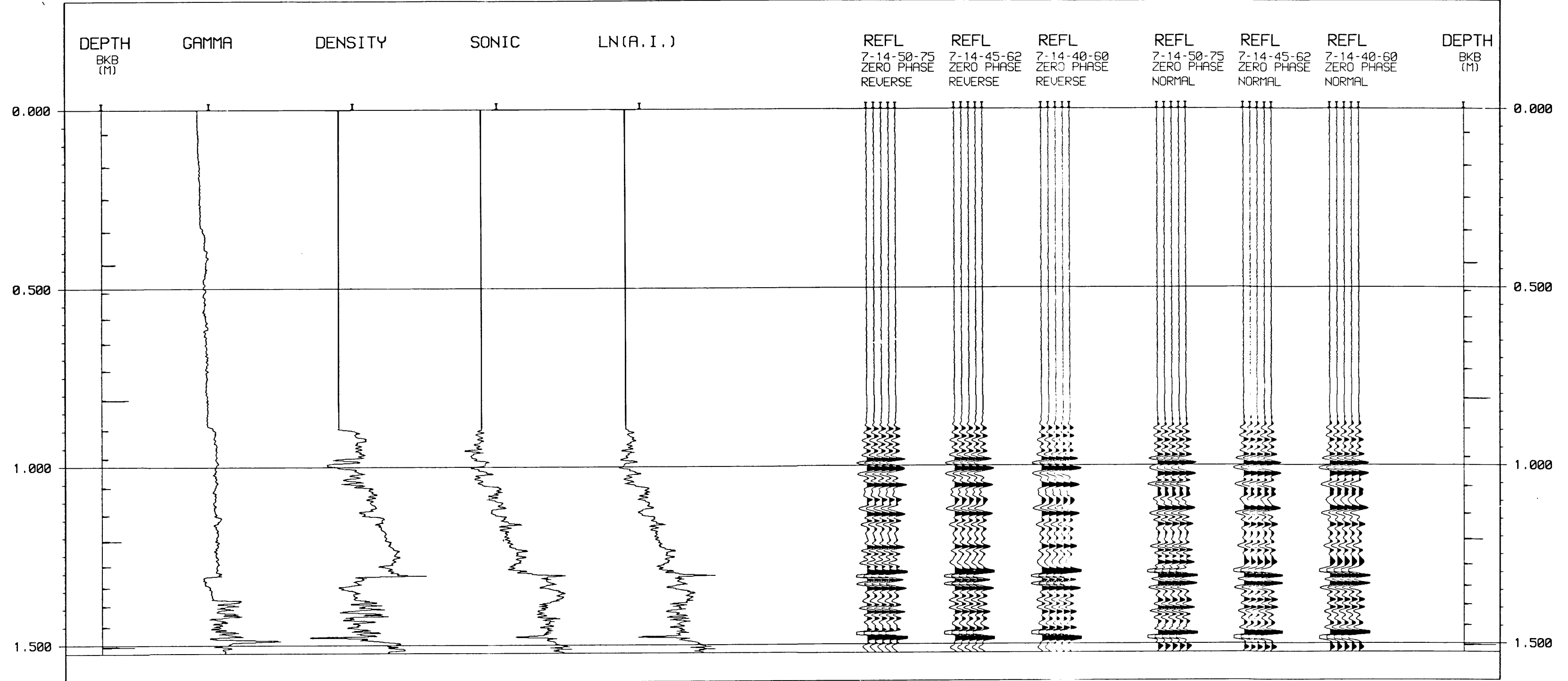
POLARITY : NORMAL :
COMPRESSIONAL ARRIVAL
GIVES WHITE LOOP.

REVERSE :
COMPRESSIONAL ARRIVAL
GIVES BLACK LOOP.

GENERATED : 12 JULY 1990

DEPTH (M) BELOW KB	TIME (MSEC) BELOW SRD
28	0
527	457
650	549
850	691
908	737
1000	813
1100	897
1200	977
1300	1058
1400	1136
1500	1208
1600	1279
1625	1296
1650	1311
1675	1323
1700	1339
1725	1350
1750	1365
1775	1377
1800	1390
1825	1406
1850	1421
1875	1433
1900	1448
1925	1462
1950	1475
1975	1492
2000	1505
2025	1519

TIME IN SECONDS



TIME IN SECONDS

90/288



SHELL-AUSTRALIA E.& P. OIL AND GAS		
GIPPSLAND BASIN		
SYNTHETIC SEISMOGRAM		
DEVILFISH-1		
Author: EXO	Date: JULY 1990	Encl. 2
Report No.: SDA 958	Drawing No.: 26269	