



GEOGRAM*

(Synthetic Seismogram)

* Mark of Schlumberger

Company: ESSO AUSTRALIA LTD

Well: BLENNY 1

Field: WILDCAT

Country: AUSTRALIA

Reference No: 960796

Date Logged: 7-05-92

Date Processed: 21-5-92

Location: 38 47' 3" S 147 41' 4" E

Elevations: KB: 22.00 DF: 21.70 QI: -40.00

Permanent Datum: NSL

Depth Units: METRES

LOG INFORMATION

FIELD GEOLOGIST: Engineer: D. B. WILSON

CONTRACTOR: Manager: I. SCHWAB

LOGGING: Operator: S. V. BARRER

Logging Datum: 22.00

Seismic Reference Datum: 0.00

Sonic Calibration By Check Shot: YES

Sonic Edited By Analyst: YES

Two-Way Time Sample Interval: 2 ms

Environment: offshore

Total Vertical Depth Correction Applied:

Source of True Vertical Depth Data:

Measurement Hole Deviation:

Run	Date	Tool Type	Bit Size	Clearing	Top Depth	Bottom Depth
1	4/06/92	AS	AS	Open	0.00	137.34
2	7/06/92	AS	AS	Open	1.00	782

GEOPHYSICAL MODEL ASSUMPTIONS

Equal time slice model of horizontal plane layers.

Plane acoustic waves at normal incidence.

No intrinsic attenuation.

POLARITY

An upgoing wave, reflected by an increase in acoustic impedance with depth, is displayed as a white trough under normal polarity.

SIGNATURES

All signatures displayed in the Geogram results correspond to a wavelet convolved with a reflection coefficient of 0.5 (4 degrees in acoustic impedance with depth).

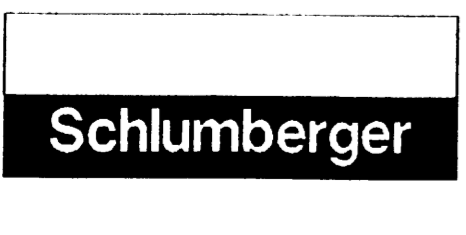
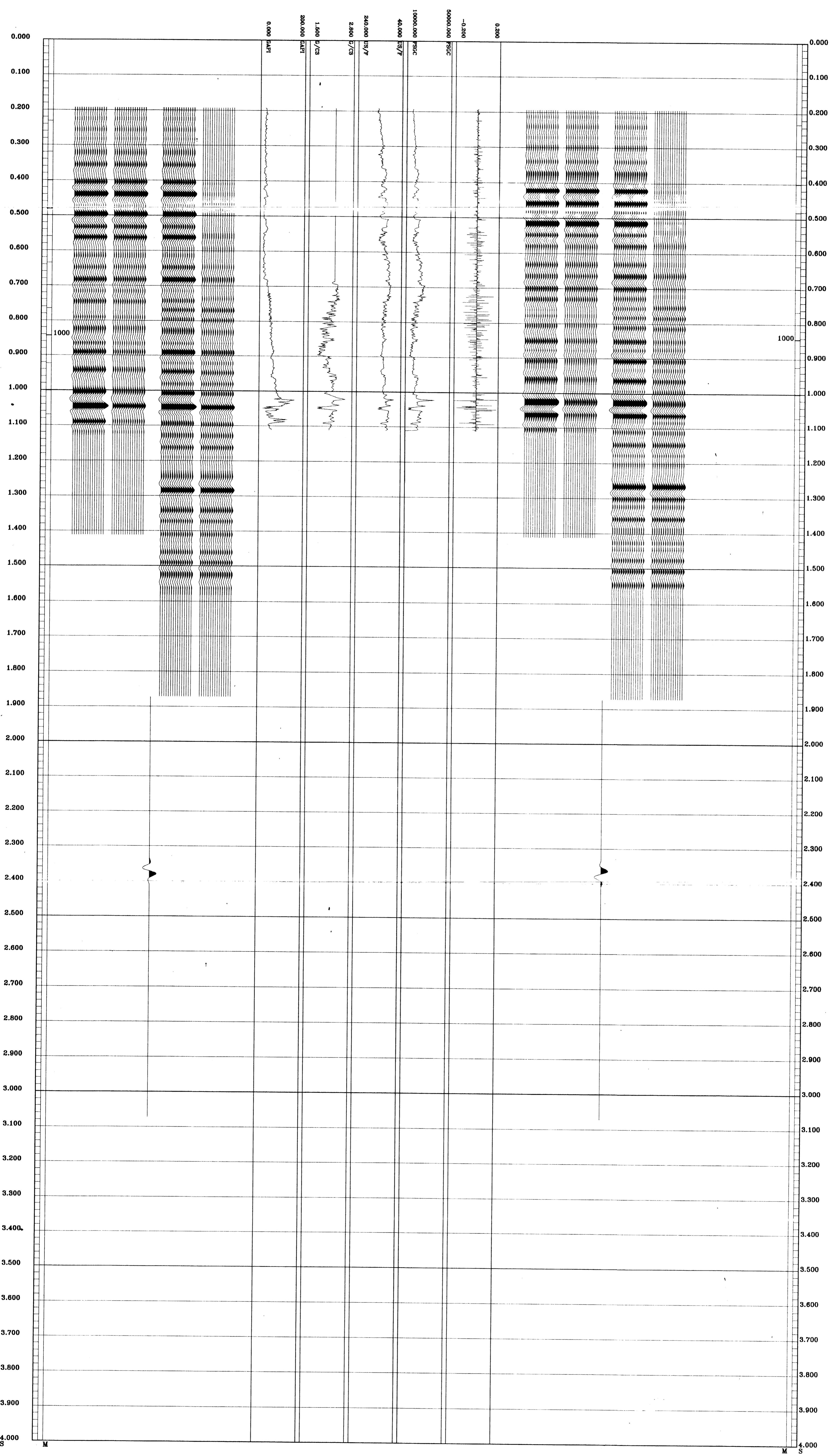
INTERPRETATION

FOLD HERE

All interpretations are opinions based on inferences from electrical or other measurements and we cannot, and do not, guarantee the accuracy or correctness of any interpretations. We accept no liability for any loss or damage or expense incurred or sustained by anyone resulting from any interpretations made by any of our officers, agents or employees. These interpretations are also subject to Clause 4 of our General Terms and Conditions as set out in our current Price Schedule.

**** GEOGRAM ****
25 HERTZ ZERO PHASE
RICKER WAVELET WITH -90 DEG. PHASE SHIFT
BLENNY-1

- MULTIPLES ONLY
REVERSE POLARITY
- PRIMARYS AND MULTIPLES
REVERSE POLARITY
- PRIMARYS WITH TRANSMISSION LOSS
REVERSE POLARITY
- PRIMARYS
REVERSE POLARITY
- REFLECTION
- ACOUSTIC IMPEDANCE
- SONIC
- DENSITY
- CANARY RAY
- MULTIPLES ONLY
NORMAL POLARITY
- PRIMARYS AND MULTIPLES
NORMAL POLARITY
- PRIMARYS WITH TRANSMISSION LOSS
NORMAL POLARITY
- PRIMARYS
NORMAL POLARITY



COMPANY ESSO AUSTRALIA LTD
 FIELD WILDCAT
 WELL BLENNY 1
 COUNTRY AUSTRALIA