

Schlumberger



# GEOGRAM\*

(Synthetic Seismogram)

\* A Mark of Schlumberger

Company: ESSO AUSTRALIA LTD.  
 Well: ADMIRAL-1  
 Field: WILDCAT  
 Country: AUSTRALIA  
 Reference No: 540744 Interval: 2160.00 to 2310.00  
 Date Logged: 03-12-89 Date Processed: 02-01-90  
 Location: 38 09 12.2' S 148 38' 50.7' E  
 Elevations: KB: 2100 DF: 2070 GL: -10100  
 Permanent Datum: MSL Depth Units: METRES

### LOG INFORMATION

FIELD RECORDING: Engineer: RICHST Location: VEA Program Version: 320  
 COMPUTATION: Analyst: K. MCPHAL Centre: ASJ Baseline: 18.3  
 ELEVATION ABOVE MEAN SEA LEVEL  
 Logging Datum: 2100  
 Seismic Reference Datum: 000  
 Sonic Calibration By Check Shots: YES Sonic Edited By Analyst: YES  
 Two-Way Time Sample Interval: 2 ms Environment: offshore

True Vertical Depth Corrections Applied:  
 Source of True Vertical Depth Data:  
 Maximum Hole Deviation:

Run	Date	Tool Type	Bit Size/Depth	Casing Size/Depth	Top Depth	Bottom Depth
1	26-11-89	SPT			231 M	829 M
2	03-12-89	BHC	12 1/4" @ 282 M	13 3/8" @ 89 M	89 M	280 M
VSP Run	Date	Gun Offset	Hydro Offset	Gun Elevation	Hydro Elevation	Gun Asstn
1	03-12-89	40 M	40 M	5 M BELOW GL	10 M BELOW GL	80

### GEOGRAM MODEL ASSUMPTIONS

Equal time slice model of horizontal plane layers.  
 Plane acoustic waves at normal incidence.  
 No intrinsic attenuation.  
 POLARITY  
 An upgoing wave, reflected by an increase in acoustic impedance with depth, is displayed as a white trough under normal polarity.  
 SIGNATURES  
 All signatures displayed in the Geogram results correspond to a wavelet convolved with a reflection coefficient of -0.5 (A decrease in acoustic impedance with depth).

### REMARKS

FOLD HERE

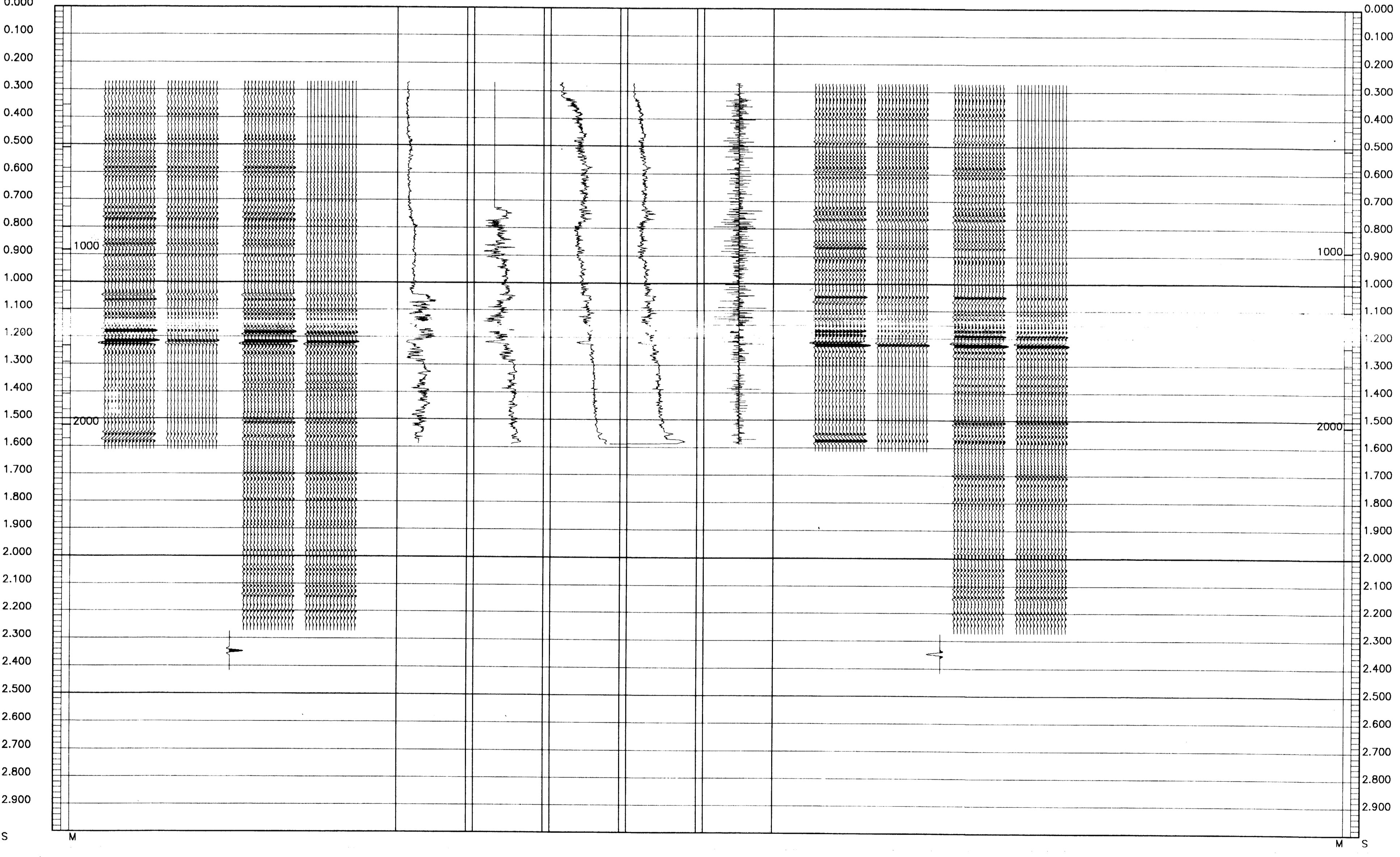
The well name, location and borehole reference data were furnished by the customer.

All interpretations are opinions based on inferences from electrical or other measurements and we cannot, and do not guarantee the accuracy or correctness of any interpretations, and we shall not, except in the case of gross or willful negligence on our part, be liable or responsible for any loss, costs, damages or expenses incurred or sustained by anyone resulting from any interpretations made by any of our officers, agents or employees. These interpretations are also subject to Clause 4 of our General Terms and Conditions as set out in our current Price Schedule.

## 45 HERTZ ZERO PHASE RICKER WAVELET

MULTIPLES ONLY REVERSE POLARITY	MULTIPLES ONLY NORMAL POLARITY	PRIMARIES AND MULTIPLES REVERSE POLARITY	PRIMARIES AND MULTIPLES NORMAL POLARITY	PRIMARIES WITH TRANSMISSION LOSS REVERSE POLARITY	PRIMARIES WITH TRANSMISSION LOSS NORMAL POLARITY	PRIMARIES REVERSE POLARITY	PRIMARIES NORMAL POLARITY	REFLECTION	ACOUSTIC IMPEDANCE	SONIC	DENSITY	GAMMA RAY
------------------------------------	-----------------------------------	---	--	--	---	-------------------------------	------------------------------	------------	-----------------------	-------	---------	-----------

0.200  
 -0.200  
 50000.000 FSEC  
 10000.000 FSEC  
 100.000 US/M  
 600.000 US/M  
 3.000 G/C3  
 1.800 G/C3  
 200.000 GAPI  
 0.000 GAPI



COMPANY ESSO AUSTRALIA LTD.  
 FIELD WILDCAT  
 WELL ADMIRAL-1  
 COUNTRY AUSTRALIA

