

SEISMIC CALIBRATION LOG

(Adjusted Continuous Velocity Log)



Company: BEACH PETROLEUM N.L.

Well: WRIXONDALE #1 *Logan Harvey Robert*

Field: WILDCAT

Country: AUSTRALIA

Reference No: 540421 Interval: 000 to 987.00

Date Logged: 19/10/85 Date Processed: 29/10/85

Location: 037 59' 42.8" S 147 29' 48.1" E

Elevations: KB: 26.2 M DF: 26.0 M GL: 22.2 M

Permanent Datum: MSL Depth Units: METRES

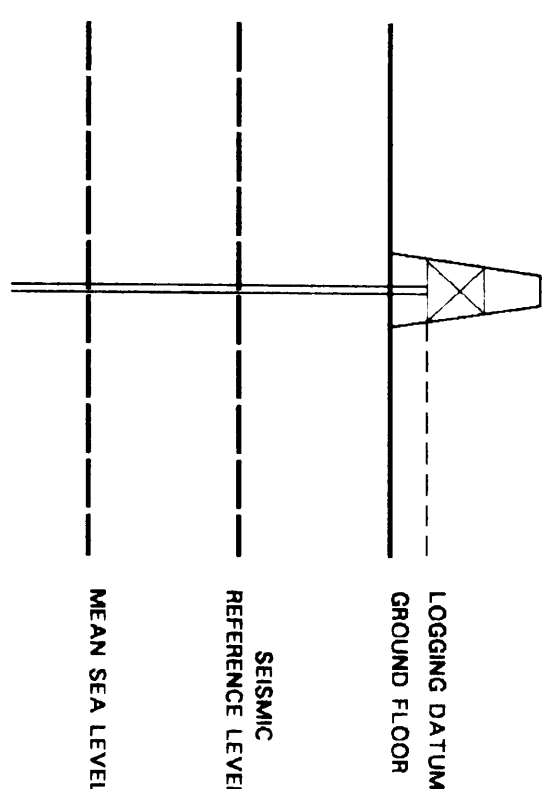
FIELD RECORDING: Engineer: E. ASTRACHIAN Location: OCA Program Version: 28.4 88/02/09

COMPUTATION: Analyst: M. SANDERS Centre: ASJ Baseline: 14.2

Logging Datum: 26.2 M

Seismic Reference Datum: MSL

Ground Level: 22.2 M



Total No. of Check Levels: 15 (from 165 to 965 m below KB)

Velocity Log Depth Reference: SRD

Velocity Log Time Reference: SRD

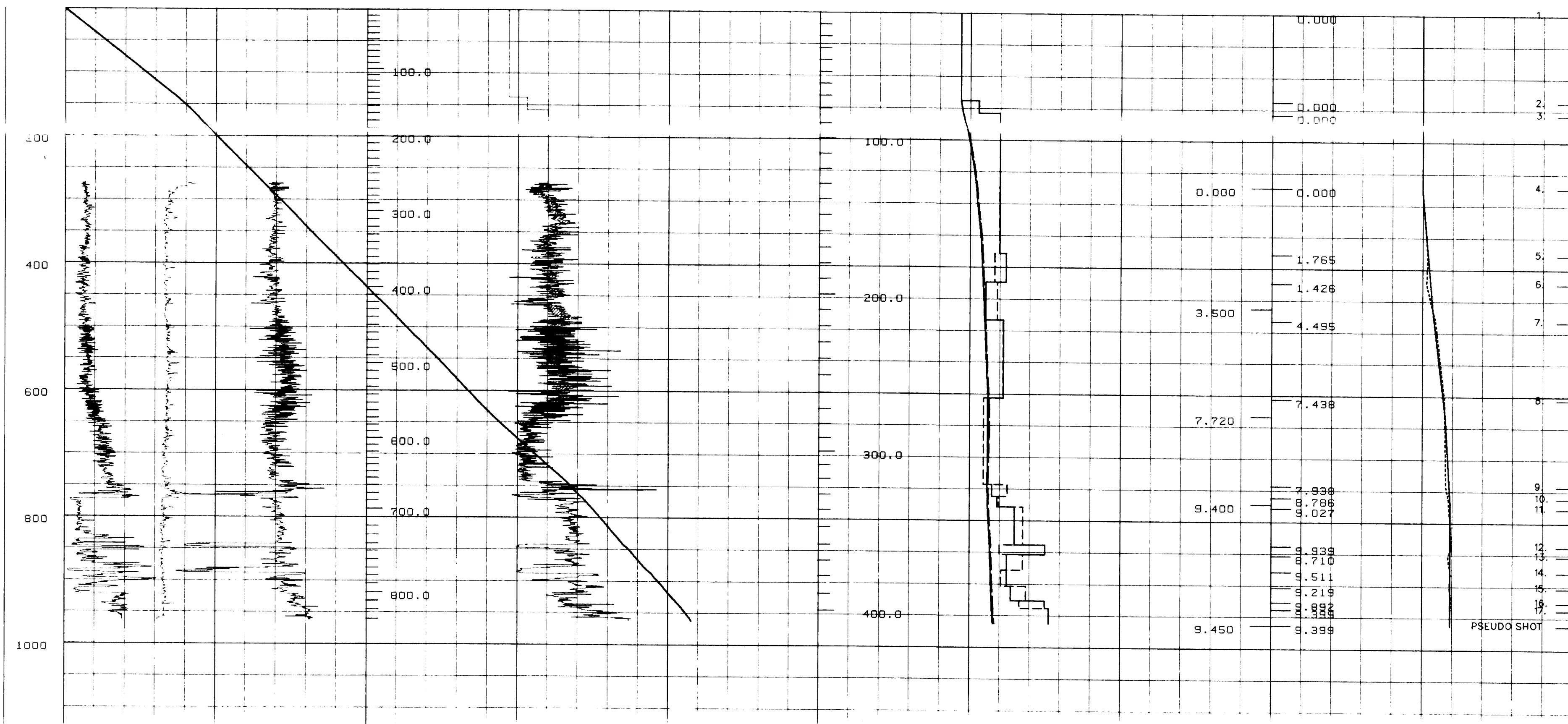
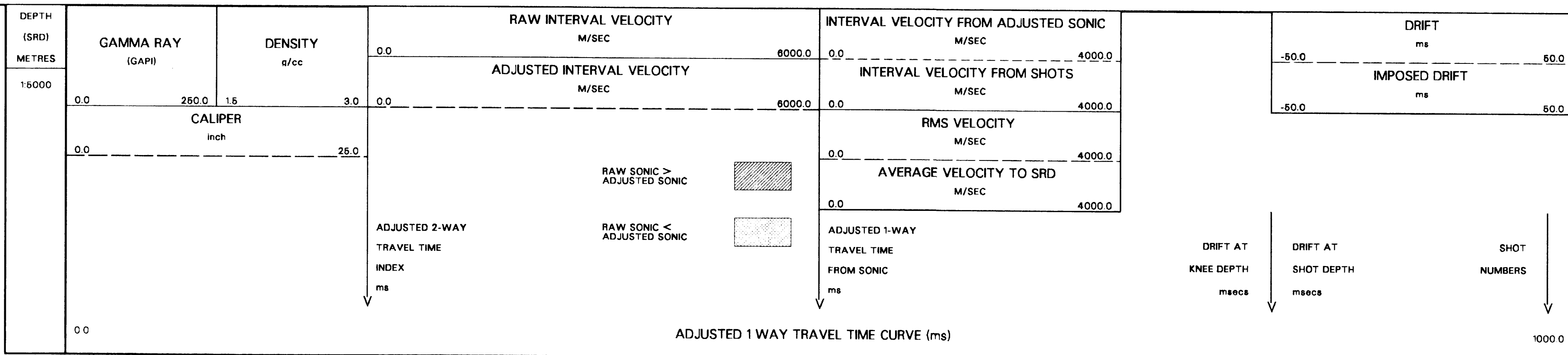
Run	Date	Tool Type	Bit Size/Depth	Casing Size/Depth	Top Depth	Bottom Depth
1	18/10/85	SLS	8 5/8" @ 302 M	8 1/2" @ 987 M	288 M	987 M

REMARKS

Sonic log interval 300 - 987 metres below KB
Density log interval 300 - 987 metres below KB
Bottom shot @ 965 M below KB drift extrapolated to TD
Imposed shot at SRD and top of sonic (300 metres below KB)

FOLD HERE The well name, location and borehole reference data were furnished by the customer.

All interpretations are opinions based on inferences from electrical or other measurements and we cannot, and do not guarantee the accuracy or correctness of any interpretations, and we shall not, except in the case of gross or willful negligence on our part, be liable or responsible for any loss, costs, damages or expenses incurred or sustained by anyone resulting from any interpretations made by any of our officers, agents or employees. These interpretations are also subject to Clause 4 of our General Terms and Conditions as set out in our current Price Schedule.



Schlumberger

COMPANY BEACH PETROLEUM N.L.
FIELD WILDCAT
WELL WRIXONDALE #1
COUNTRY AUSTRALIA