

Geoservices Overseas S.A. MASTERLOG

geological evaluation

OPERATOR AMPOL
WELL PAINESVILLE 1
RIG ATCO A3

COUNTRY AUSTRALIA
FIELD or OPERATOR PAINESVILLE
LITHOLOGICAL EVALUATION
Litho Log No. 12
Well Type MULTIPHASE
Above Base Seal Level 5.25m
Above Ground Level 5.25m
Main Meter Depth
Depth Reference 0' 98' 01'
Drilling Contractor ATCO
Rig Type MARISSA C-1800T

FINAL DATA
Start Operation 12/2/85
Date Spudded 12/2/85
Date Rig Released 8/27/85
Final Well Status PLUG AND ABANDON
Total Depth (measured) 207.7m
Total Depth (vertical) _____
Horizontal Displacement _____
Annulus (mm) _____

CASING DATA
Size 244mm
Depth at 12.8m
Size _____
Depth at _____
Size _____
Depth at _____
Size _____
Depth at _____
Size _____
Depth at _____
Size _____
Depth at _____
Size _____
Depth at _____

MUD DATA
MW Mud Weight
FV Funnel Viscosity
PV Plastic Viscosity
YP Yield Point
Gel Gel Strength
pH Acidity/Alkalinity
WL Water Loss
Cl Chloride
Ca Calcium
Sol Solids
H₂O Water
Oil Oil
Snd Sand

DRILLING LEGEND
WOB Weight On Bit
RPM Rotary Speed
SPM Pump Strokes/min
FR Flow Rate
PP Pump Pressure
DS Deviation Survey
RMS Rms
CS Casing Shoe

GEOLOGICAL LEGEND
Conglomerate
Sand/Sandstone
Silt/Siltstone
Clay/Claystone/Shale
micrite
Limestone
Dolomite
Salt
Gypsum
Anhydrite
Coal/Lignite
Chert
pyrite

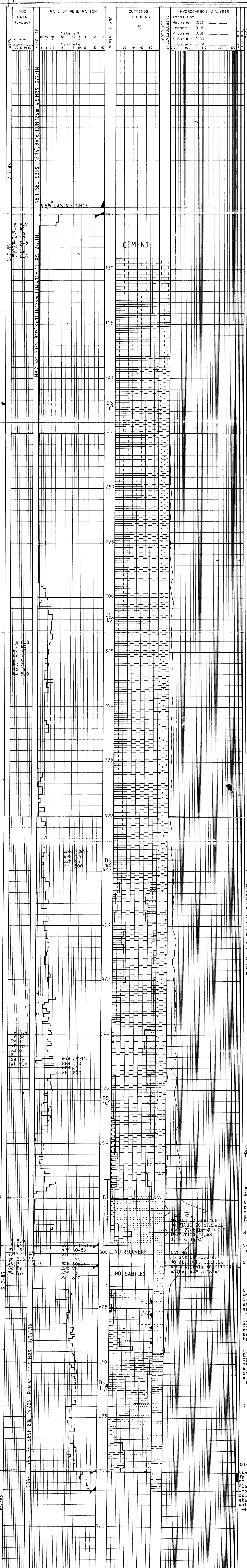
ENGINEERING LEGEND
C1 Core No. 1
rec. 95% recovery 95%
DST1 Drill Stem Test No. 1

SCALE 1/200
each horizontal division equals meter or feet

LITHOLOGICAL DESCRIPTIONS
REMARKS

WELL: _____
SHEET: _____
DATE: _____

LITHOLOGICAL DESCRIPTIONS
ENGINEERING REMARKS



145m - 185m
MARL
Fossil fragments
unconsol off wh & bl-
gy v crse ang pr srt;
glauc coral & shell
frags.
MICRITE pale gy, unco
nconsol, sft, pr vis
Ø.

185m - 200m
MARL
Fossil fragments
a/a predom med-crse,
aren i/p,
Micrite a/a.

200m - 330m
MARL
Fossil fragments a/a
rare glauc.
Micrite a/a.

Fossil fragments
unconsol, off wh & bl-
blue grey, med-crse,
aren i/p, ang, pr
srtg, mod wll indur
coral and shell frags.
Micrite pale gy, un-
consol, sft, pr vis
Ø.

330m - 430m
MARL
Fossil fragments a/a.
Micrite a/a, tr glauc,
rare py.

430m - 551m
MARL
Fossil fragments
unconsol, off wh &
blue grey, med-crse,
ang, pr srt, glauc,
coral and shell frag.

Micrite pale gy, unco
n-sol, sft, pr vis Ø.
Arenaceous Limestone
gy-wh, v fn-fn, abn
foss, mod wll indur
wll cmt, brit, pr srtg
glauc, no vis Ø.

Siltstone gy, sft, abd
foss, occ sbfiss i/p.
Claystone pale grn, sft,
pr indur, calc,

551m - 572m
MARL
Lithologies a/a.

572m - 586m
SANDSTONE
tr nsl, crse - v crse
predom v crse, wll srtg
sbang, lse-fri, tr blue
grey lith frags, ex
inf Ø.

Micrite a/a.

596m - 617m
CORE 1 NO RECOVERY
Sandstone inferred a/a

617m - 641m
Basement
Sandstone transl, fro-
sted, crse-v crse, wll
srtg, sbang, lse, gd
inf Ø.
Quartzite transl-wh,
fn grnd, mod srtg, wll
cmt, mod wll indur
hrd & brit, ueroic
texture no vis Ø.

641m - 707.7m
Basement
Claystone orange-brn,
sft, unconsol, v coh-
esive.
Siltstone hrd, aren i/p
v micaceous hrd phyll-
itic texture

Quartzite a/a.

CORE 2 48% RECOVERY
Quartzite gy massive,
fn grnd, hrd wll indur
no vis Ø.
Slate gy v fn indur, sft
-mod hrd, v wll grnd,
occ qtz veins, occ iron
staining, soapy feel
wll dev slaty cleavag
-Ø.