



GAMMA-RAY NEUTRON

COMPANY WOODSIDE LAKES ENTRANCE OIL COMPANY
 WELL WOODSIDE L.E. NO. 1
 FIELD LAKES ENTRANCE
 COUNTRY AUSTRALIA
 STATE VICTORIA

DEPT. MNT. RES. & ENV.
 PEG03532

COUNTRY AUSTRALIA
 FIELD LAKES ENTRANCE
 WELL WOODSIDE L.E. NO. 1
 COMPANY WOODSIDE (L.E.) OIL COMPANY

Location: 37° 52' 0" S
 147° 59' 42" E
 Other Services: ES-MLC SL
 Ref. No.:

Permanent datum GL Elev.: 163
 Log Measured From RT 8 Ft. Above Perm. Datum
 Drilling Measured From RT 8 Ft. Above Perm. Datum
 RUN No. 1 Depth Sals ONE 1 2" / 100"
 Date 3rd APRIL 1966

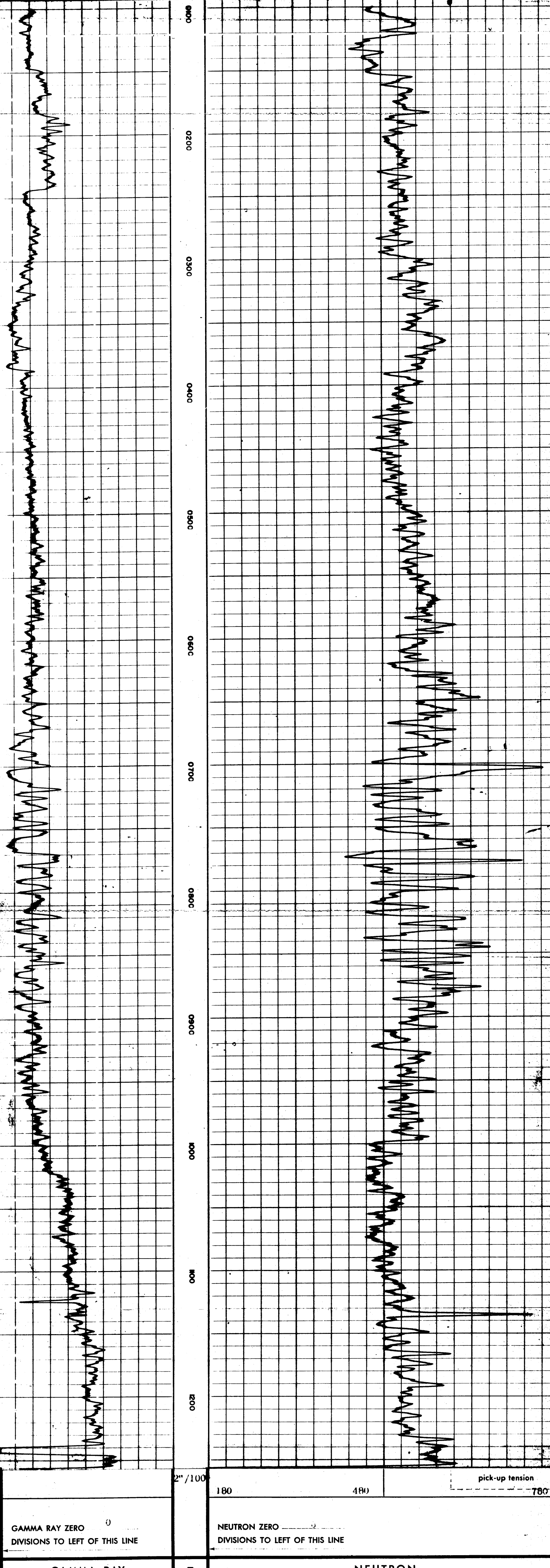
First Reading 1236
 Last Reading 1240
 Interval Measured 1146
 Casing Schlumberger 143
 Casing Driller 1247

Depth Reached 1247
 Bottom Driller LIGNO SULFONATE
 Mud Nature 1.75 @ 67 °F
 Density 1 Viscosity 1.5 @ 88 °F
 Mud Resistivity 10 1.4.5 CC/30 min.
 pH Fluid Loss F LOW LINE

Origin of Sample F LOW LINE
 Rmt 1.35 @ 88 °F
 Rmc 2.1 @ 88 °F
 Bit Size 1 7/8" to 1 1/2"
 Casing Size 9 5/8"
 Operating Rig Time 3.00
 Truck No. 2523
 Recorded by BOWLER SINGER
 Witness PEARRY

REMARKS:

GAMMA RAY - NEUTRON CALIBRATION DATA				GAMMA RAY - NEUTRON RECORDING DATA			
Run N°	ONE			Run N°	ONE		
Background	40 cps			Fluid Level	SURFACE		
+ Test Source	375 cps			Sensitivity Tap	GR 300 N 150	GR	N
Galva Increase	8.25 div.			Time Constant	GR 3 N 3	GR	N
Sensitivity Tap	500			Recording Speed	1200 F.P.H		
Test Source Far	1010 cps			Eccentralizer	None		
Test Source Near	240 cps			GRN cartridge No.	GN-H 163		
Galva divisions	F: 3.7 N: 15.5 F:	N:	F:	GR detector No.	SGD-F 619		
Sensitivity Tap	500			N detector No.	NLD-E 366		
Type of Source	Am-Be			Spacing N	15.5"		



GAMMA RAY	DEPTHS	NEUTRON
GAMMA RAY ZERO 0 DIVISIONS TO LEFT OF THIS LINE	2" / 100	NEUTRON ZERO 6 DIVISIONS TO LEFT OF THIS LINE
GAMMA RAY	DEPTHS	NEUTRON
COMPANY WOODSIDE LAKES ENTRANCE OIL COMPANY		SCHL. F.R. 1246
WELL WOODSIDE L. E. NO. 1		SCHL. T.D. 1246
FIELD LAKES ENTRANCE		DRLR. T.D. 1247
COUNTRY AUSTRALIA		STATE VICTORIA