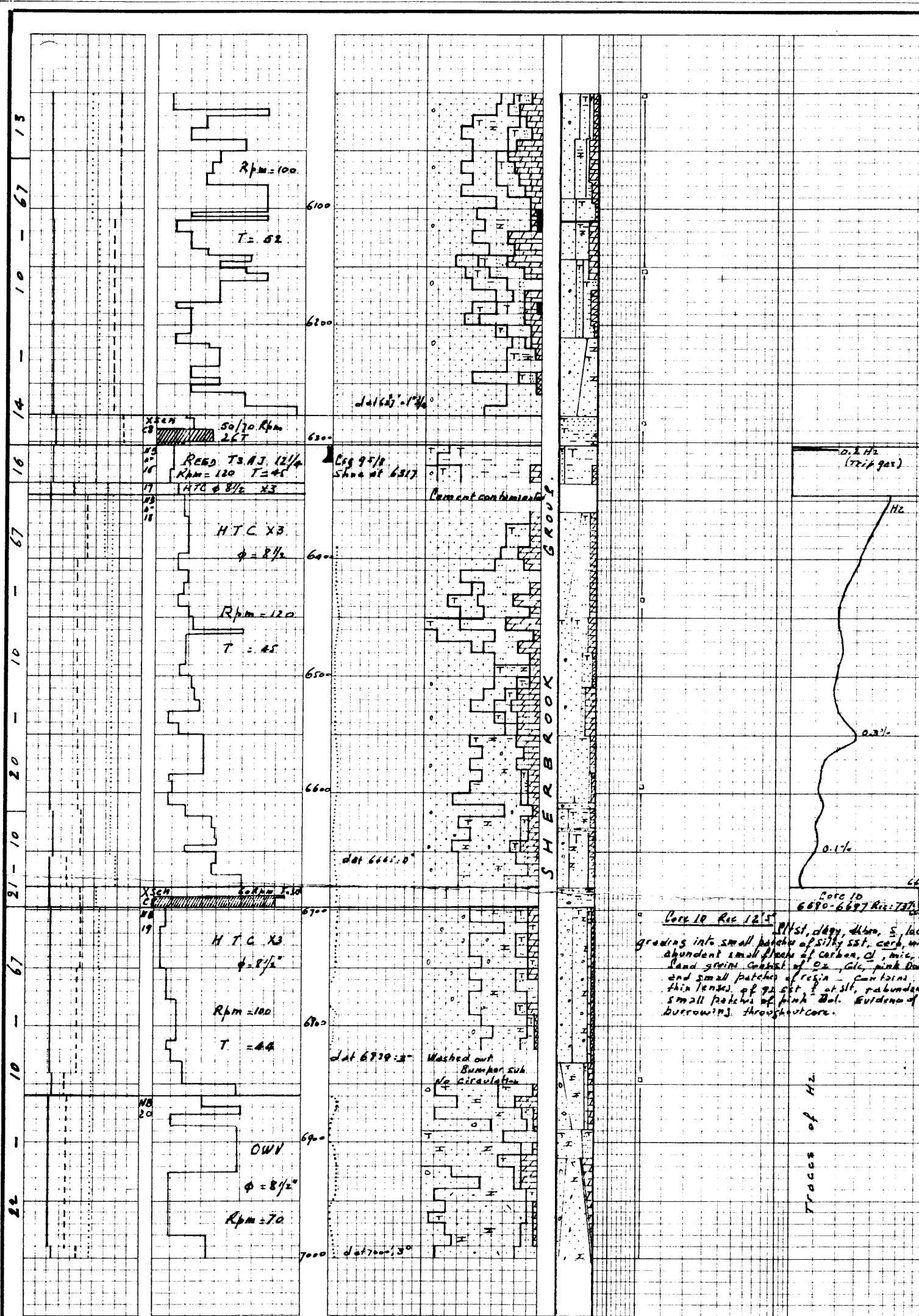


VOLUTA-1



5905'-6210' Interbedded
 Qtz sst ltgy-wh f-m, loc
 grading to crs, srt, dns, with oca Glc grain
 C specks, oca lyr, rarely mic, det in bl
 (dol) cmf tight - with poor visual porosity
 (hd) - hd cement is sometimes buff, abnd
 clast, dol' (grading to dol S)

Lsc OS as the above section
 Clst - Sltst, dkgy brn, soft
 srt, carb - (carb) locally, s-s', with
 streaks, and lamination, oca Glc grain
 lyr.
 Dol, brn-buff, hd-hd compact
 glc - glc, s', in part xlu, in part cilia. s'
 Traces C and Pyr throughout the section

6210'-6277'
 Lsc OS in part f to crs clear, srt
 in part CFS to gren, loc bl, (srt), (eng), (rad)
 locally ang
 Qtz sst as above, becoming in
 part crs-cr, less srt (6210-6277)
 Core No. 9 in part cmf to buff. dol - abundant.
 Rec: 100%

6277'-6302' Core No. 9, 2.5 feet
 Top: (8') - Qtz sst, sl-mod (roos fo-20%) ltgy, m
 ang - (rad), srt, (cl) cmf, carb streaks, becoming
 srt below 6277'. Chert gradually from srt
 sst to sandy sst to 6299' - Extensively burrowed
 middle (6299-6296) = sst, cl, csh, with Qtz
 sst lenses grading down into clst, blh, hd.
 Slt glc, pyr.
 Bottom (6296-6302) Sltst as abt clst, srt, glc
 with concretions and layer of ankerite (and?)
 at 6299 - 6296 2 layers of finely laminated
 Qtz sst, srt, with abundant ankerite cmf
 and abundant carb lamination

6302'-6490' Interbedded
 OS, lsc, f - crs, clear, srt - (srt) (eng)
 (rad) - loc rad - (srt) - srt - matrix washing
 out.
 Qtz sst, dns, wh, f, m, srt, (eng), wh cl
 matrix, hd, oca Glc grains.
 from 6490' becoming dirty, coarser - (srt)
 matrix dol - green specks more abundant.
 Sltst, dkgy, carb, s, (hd) - srt, from 6490'
 grades into cream-beige dol' sst, loc grading
 to f sst.
 Dolomite, beige-buff, hd, s, xlu, with
 Glc grains compact, pyr, siderite?
 Traces Pyrite.

6490'-6690' Interbedded
 OS, lsc as above in part crs-gran
 ang to (rad) - matrix washing out.
 Qtz sst - in part white, f - crs (srt),
 (hor), wh cl and (dol) cmf
 in part beige-buff f - crs
 ang, somewhat microconglomeratic, glc, pyr.
 Matrix abundant tight f - increasing from 6690'
 Dol: beige-brn-buff, hd compact,
 s-s', pyr, glc, grades into dol' sst, and
 into dol' microbreccia.
 oca sstst, dkgy, carb, mic, cl as above
 grading into small patches of silty sst, carb, with
 abundant small patches of carb, cl, mic,
 sand grains. Grains of Qtz, Glc, pink Dol
 and small patches of resin - faint brown
 thin lenses of Qtz sst, f - cl sst, abundant
 small patches of pink Dol. Evidence of
 burrowing throughout core.

6690'-7070' Dominantly Lsc OS and Qtz sst
 OS, lsc, f - crs in part gran - hd clear
 (wh), (yellow 6760') (ang) - (rad) loc ang, cl
 and dol matrix washing out. Tr of dkst-gr sil
 ch grains (700-?).
 Qtz sst - in part wh, clear, (par), f - crs,
 (srt), loc srt, oca glc gr, oca lithic gr, coal streaks
 set in a wh cl, (dol-calc) matrix tight.
 in part beige-brn buff, f - crs
 grading into microconglomeratic, (srt), glc,
 pyr, carb laminations, oca lithic grains, sst in
 a very abundant dol' matrix tight. grade
 in part into Dol' microbreccia.

in part: gy: dk gy, f, f, srt,
 friable, carb, (mic), C streaks, cl cmf, gra.
 det into sstst
 - Minor
 Sltst: dk gy, srt, (glc), (mic), carb,
 s, (pyr), cl grades in part into f - sst sst.