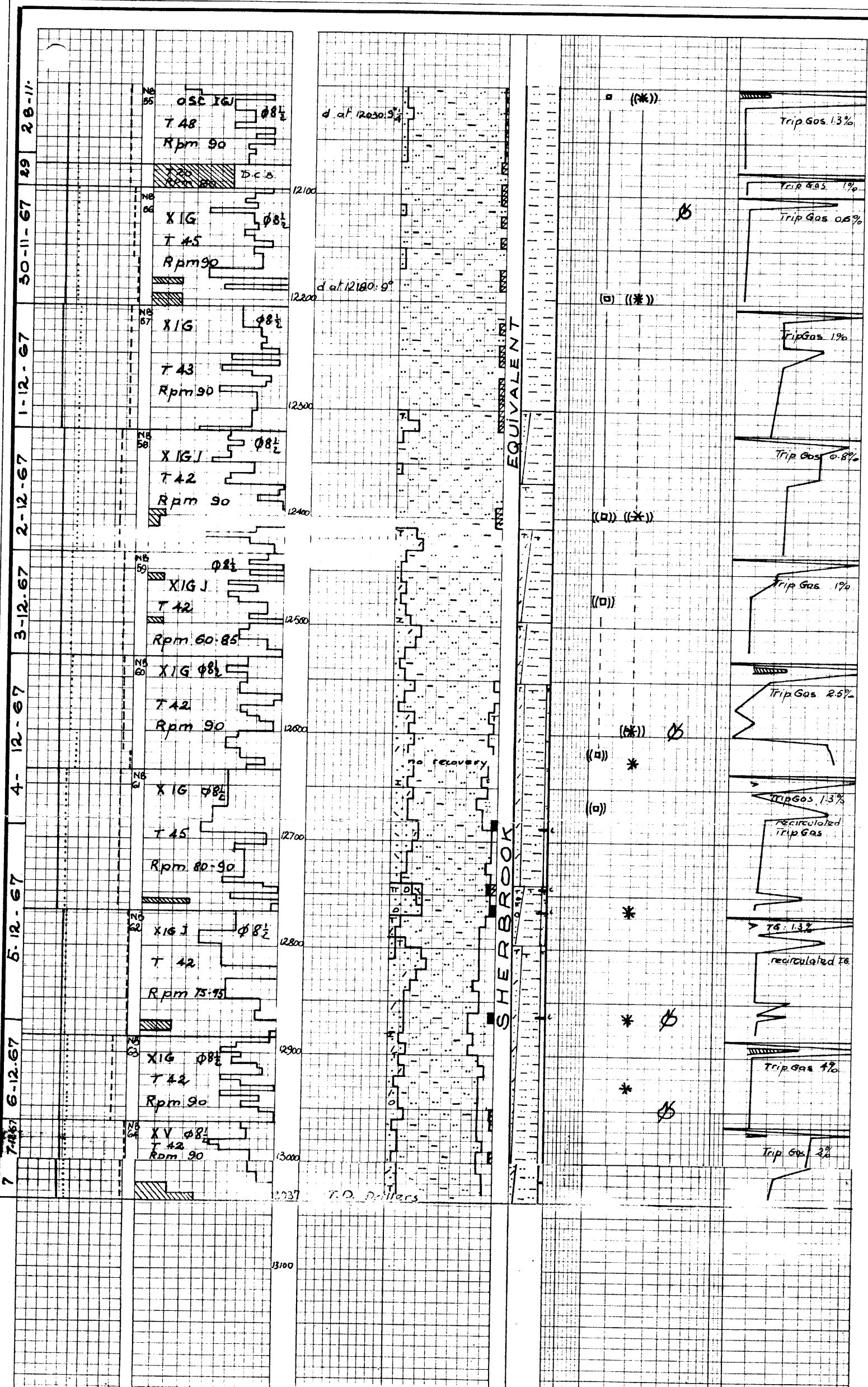


VOLUTA-1

DEPT. NAT. RES & ENV



PE600398



Siltst a.a. s.s. in parts coaly less glauc.
Dol and Sil a.a.

Siltst as above s. occa s
Dol xln hd a.a.

12300-12360 Interbedded
Sst Qtz whgy, f.f (sort) cons cal cmt in part fld. ritz (Por)
Siltst a.a. more glauc
Dol brn intraces
Cal xln clear wh

12560-12410
Siltst a.a. coaly and glauc
12410-12490 Interbedded
Sst dirty wh f, sort, subang, Qtz cmt
Slight secondary calc cmt in part
wh fld. mic, occa Zedites and chlor
lithic grns increase with depth (Por)

12490-12550 Interbedded
Sst gygn f.f sort sublithic carb in part
Siltst a.a.
12550-12620 Interbedded
Sst a.a.
Siltst a.a. more glauc
Sh lgt gy silty in part dkgy when assoc with calc and mic? calc in part dol and calcite in traces.

12620-12740 Interbedded
Sst a.a. sublithic lithic occa loose Qtz gn, calc cmt in part, gn size increasing to m around 12660 and 12690
Siltst a.a.
Sh a.a.
Coal stringers

12740-12790 interbedded
Sst Qtz wh f.m (sort) sobang-ang interlocked Qtz cmt, hd, (Por), recrystallization signs; associated with loose clear Qtz gns ang (Qtz pebbles) small % of lit or sublit sst
Siltst a.a.

Sh a.a. increase of dk gy sh.
Coal stringers
12790-12830 interbedded
Sst a.a. f.m hd mic grading
Siltst a.a.
Sh gy coaly

12830-12900 Interbedded
Sst sublithic a.a. coaly in part mic
Siltst a.a. glauc Qtz pebbles
Sh a.a.
Traces of coal
12900-13000 interbedded
Sst a.a. sometimes assoc to siltst
Siltst a.a. glauc. assoc with calc xln
Sh lgt gy (wh) coaly
note fossils at 12830, 12950, 12960

NOTE: Laying Cuttings % increase grossly with depth from 12600
Sst (wh) f.m coaly calc cmt in part

Siltst lgt gy coaly finely mic. R
Sh lgt gy and (wh)
Note: Very important to saving %