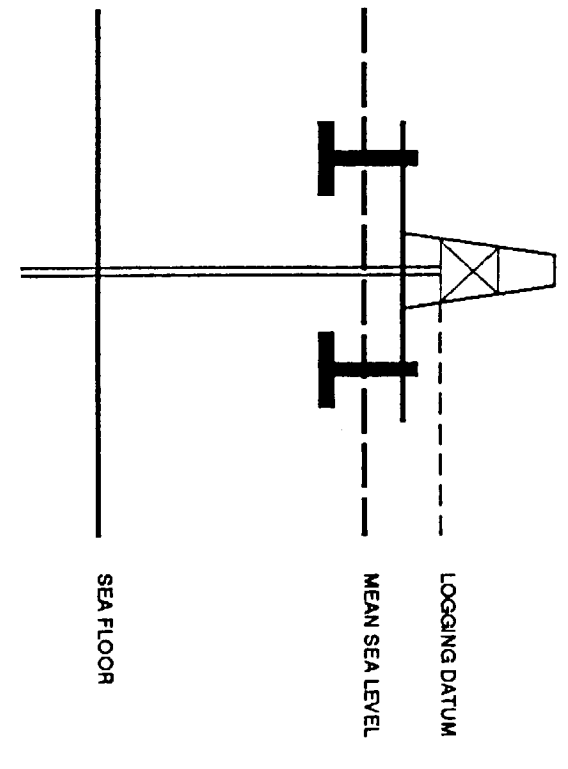


# SEISMIC CALIBRATION LOG

(Adjusted Continuous Velocity Log)



Company: BHP PETROLEUM PTY LTD  
 Well: CONAN-1  
 Field: WILDCAT  
 Country: AUSTRALIA  
 Reference No: SJ156113/1561138 Interval: 1955.00 to 650.00  
 Date Logged: 2 AUG 1995 Date Processed: 7 AUG 1995  
 Location: 038 52 14.095" S 142 46 52.022" E  
 Elevations: KB: 25.30 DF: 25.00 GL: -70.00  
 Permanent Datum: MSL Depth Units: METRES  
 FIELD RECORDING: Engineer: R. JOHNSON Location: Program Version: 709-47  
 COMPUTATION: Analyst: S. TCHERKASHINEV Centre: SVJ Baseline: 26.5  
 ELEVATION ABOVE MEAN SEA LEVEL  
 Logging Datum: 25.30  
 Seismic Reference Datum: 0.00



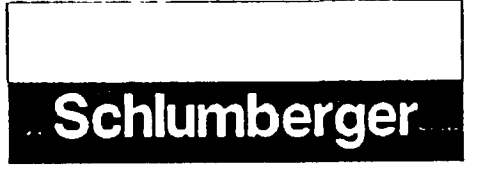
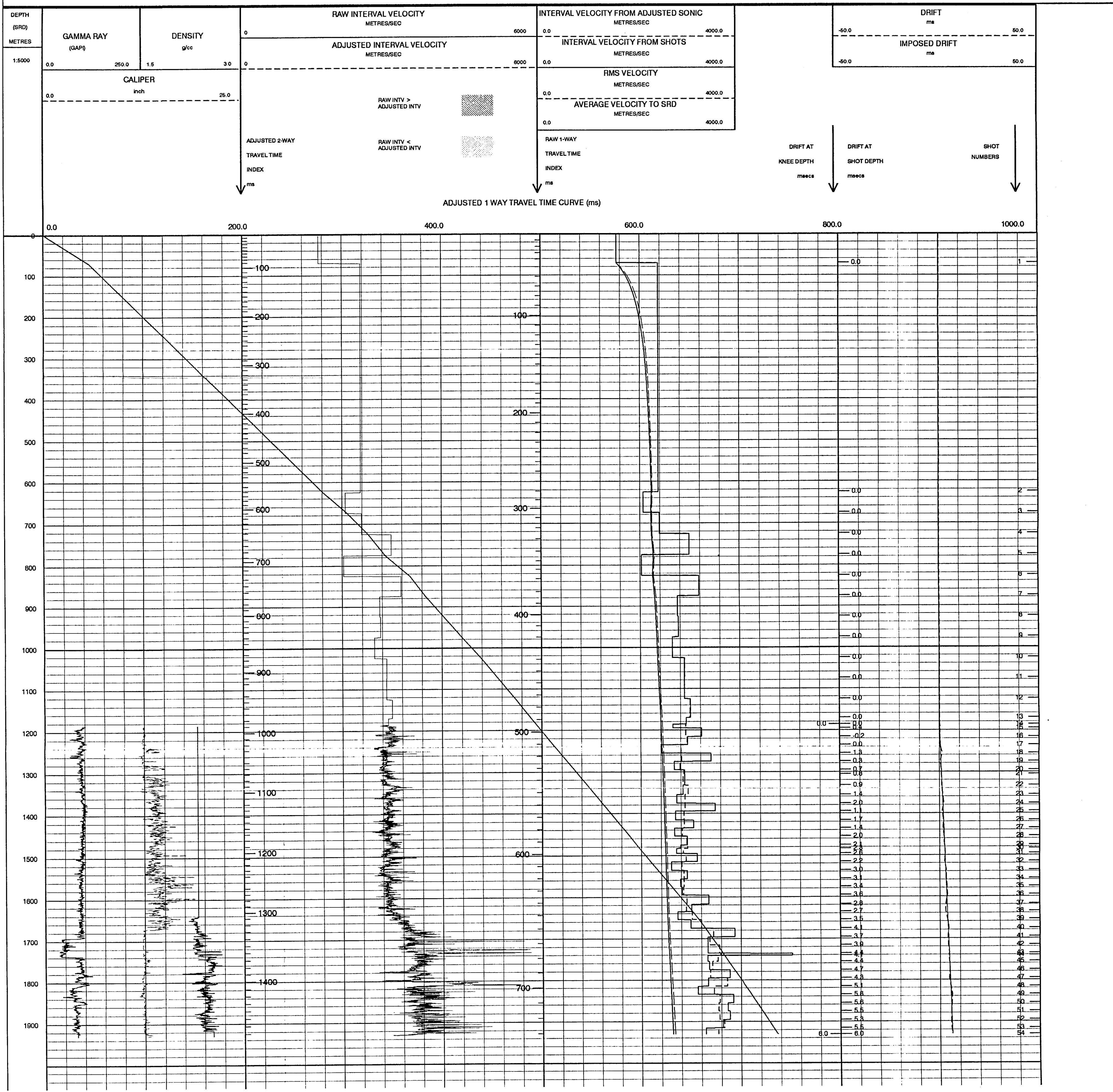
Total Number of Levels: 55  
 Depth Reference: SRD  
 Time Reference: SRD

Run	Date	Total Type	SRD	SRD	SRD	SRD	SRD
1	24-08-95	LTA	15.25 IN	15.31 IN/390 M	16.75 IN	1840 M	

VP	Date	QAN	HORO	QAN	HORO	QAN	HORO
1	1-08-95	50 M	50 M	5.0 M BELOW MSL	10.0 M BELOW MSL	82.4 DEG	82.4 DEG

FOLD HERE The well name, location and borehole reference data were furnished by the customer.

All interpretations are opinions based on inferences from electrical or other measurements and cannot, and do not guarantee the accuracy or correctness of any interpretations, and we shall not, except in the case of gross or willful negligence on our part, be liable or responsible for any loss, costs, damages or expenses incurred or sustained by anyone resulting from any interpretations made by any of our officers, agents or employees. These interpretations are also subject to Clause 4 of our General Terms and Conditions as set out in our current Price Schedule.



COMPANY BHP PETROLEUM PTY LTD  
 FIELD WILDCAT  
 WELL CONAN-1  
 COUNTRY AUSTRALIA