

COMPANY : BHP Petroleum  
 RIG : OCEAN COUNTY  
 AREA : VIC/P31  
 COUNTRY : AUSTRALIA  
 LOCATION : 38 Deg 52' 14.95" South 142 Deg 46' 52.22" East  
 ELEVATION : Air Gap 25.00 m (RT-MSL)  
 Water Depth 70.00 m (MSL-SB)  
 DEPTH REF.: ROTARY TABLE

SPUD DATE : 24-07-95  
 TO DATE : 31-07-95  
 TO DRILLER : 1985 m (1985 m TVD)  
 TO WIRELINER : m ( m TVD)  
 LOGGED FROM : Mudline @ 95 m  
 LOGGED TO : TD @ 1985 m  
 STATUS : PLUGGED AND ABANDONED

BIT SIZE in	MOLE DEPTH m	CASING SIZE in	SHOE DEPTH m
26	142	20	140
17 1/2	1208	13 3/8	1200
12 1/4	1985		

LOGGING ENGINEERS  
 C. WHITE  
 A. JAMES  
 D. TREND  
 I. GEDDES  
 S. WATSON  
 R. JONES

DEPTH SCALE  
 1:500

**SYMBOLS**

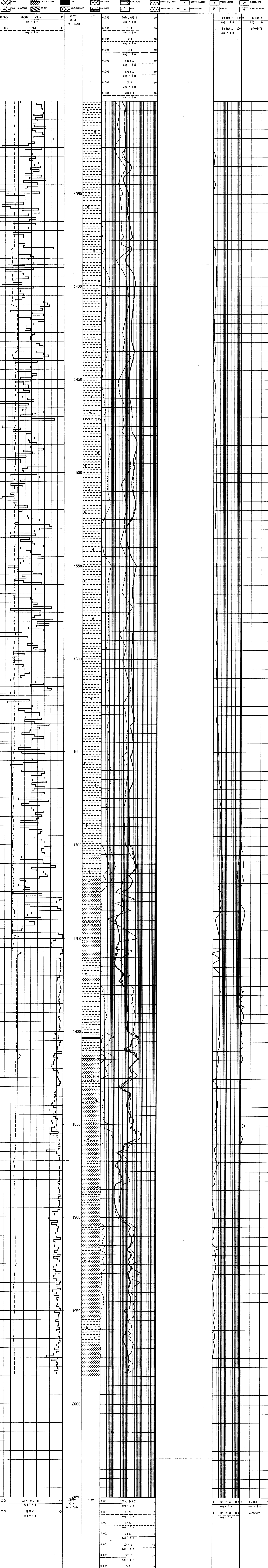
- NEW BIT RUN
- NEW CORE BIT RUN
- CASING SHOE
- LINER HANGER
- CROSS-OVER
- SIDEWALL CORE
- Not Recovered
- WIRELINE LOGG. RUN
- RT POINTS
- Pressure Only
- Seal Failure
- 11919

**ABBREVIATIONS**

- NS NEW BIT
- NCB NEW CORE BIT
- NRB RE-TRIP BIT
- CS CASING SHOE
- SMC SIDEWALL CORES
- EL ELECTRIC LOG
- WB WEIGHT ON BIT
- RPW REVS PER MINUTE
- PP PUMP PRESSURE
- SPW STROKES PER MINUTE
- CR CALCULATED RETURN
- PR POOR RETURNS
- NR NO RETURNS
- TG TRIP GAS
- CG CONNECTION GAS
- WIG WIDER TRIP GAS
- DS DIRECTIONAL SURVEY
- WT WIPER TRIP
- PM PULL OUT OF HOLE
- RM RUN IN TO HOLE
- MM WAIT ON WEATHER
- LAT LOGGED AFTER TRIP
- LM LOSS CIRCULATION MATERIAL
- DC DEPTH CORRECTION
- DST DRILL STEM TEST
- FW FRESHING
- W W/L LOSSES
- FR FLOW RATE
- FC FLOW CHECK
- BR BIT RUN

**MUD DATA**

- M WEIGHT kg/L
- MG MUD GRADIENT psi/ft
- Y FUNNEL VISCOSITY cP
- PV PLASTIC VISCOSITY cP
- YP YIELD POINT lb/cf2
- GEL GEL STRENGTH lb/cf2
- PH ACIDITY
- F FILTRATE ml/30m
- CK CAKE THICKNESS in/30
- S SALINITY mg/l
- SO SOLID CONTENT %
- O OIL CONTENT ml/30m
- WL WATER LOSS %
- SOL SOLIDS CONTENT %
- pH FILTRATE ALKALINITY c3/c3
- GYP GYPSUM CONTENT
- FORAMINIFERA
- BACTERIA
- DIATOMS
- INDETERMINATE
- PLANT REMAINS



200 ROP m/hr avg = 1 m  
 300 SPM avg = 1 m  
 2050 ROP m/hr avg = 1 m  
 300 SPM avg = 1 m