

# GEOGRAM\*

(Synthetic Seismogram)

\* A Mark of Schlumberger

25 HZ

Company: ESSO AUSTRALIA LTD.  
Well: SMILER-1  
Field: WILDCAT  
Country: AUSTRALIA  
Reference No: SVJ56131/561132 Interval: 2614.00 to 182.00  
Date Logged: 13-JULY-1995 Date Processed: 21-JULY-1995  
Location: 038 28 55.18' S 148 23 17.08' E  
Elevations: KB: 26.00 DF: 24.70 GL: -122.00  
Permanent Datum: MSL Depth Units: METRES

LOG INFORMATION

FIELD RESPONSE: Engineer: RONSSONS HOONWAKKON VEA Program Version: TCR-47  
COMPUTATION: Analyst: A WISSONKO Centre: SVJ Baseline: 26.5  
ELEVATION ABOVE MEAN SEA LEVEL

Logging Datum: 25.00  
Seismic Reference Datum: 0.00

Sonic Calibration By Check Shots: YES Sonic Edited By Analyst: YES

Two-Way Time Sample Interval: 2 ms Environment:

True Vertical Depth Corrections Applied:  
Source of True Vertical Depth Data:  
Maximum Hole Deviation: 0

Run	Date	Tool Type	Bit Size/Depth	Casing Size/Depth	Top Depth	Bottom Depth	
ONE	04-07-1986	AS-10L	17.5 IN		170 M	787 M	
TWO	13-07-1986	DLL-DLH-4S	12.25 IN		746 M	2805 M	
VSP							
Run	Date	Gun Depth	Hydro Gun Depth	Gun Elevation	Hydro Elevation	Gun Azimuth	Hydro Azimuth
ONE	13-07-1986	80 M	50 M	8 M BELOW MSL	10 M BELOW MSL	69 DEG	69 DEG

GEOGRAM MODEL ASSUMPTIONS

Equal time slice model of horizontal plane layers.  
Plane acoustic waves at normal incidence.  
No intrinsic attenuation.

POLARITY

An upgoing wave, reflected by an increase in acoustic impedance with depth, is displayed as a white trough under normal polarity.

SIGNATURES

All signatures displayed in the Geogram results correspond to a wavelet convolved with a reflection coefficient of -0.5 (A decrease in acoustic impedance with depth).

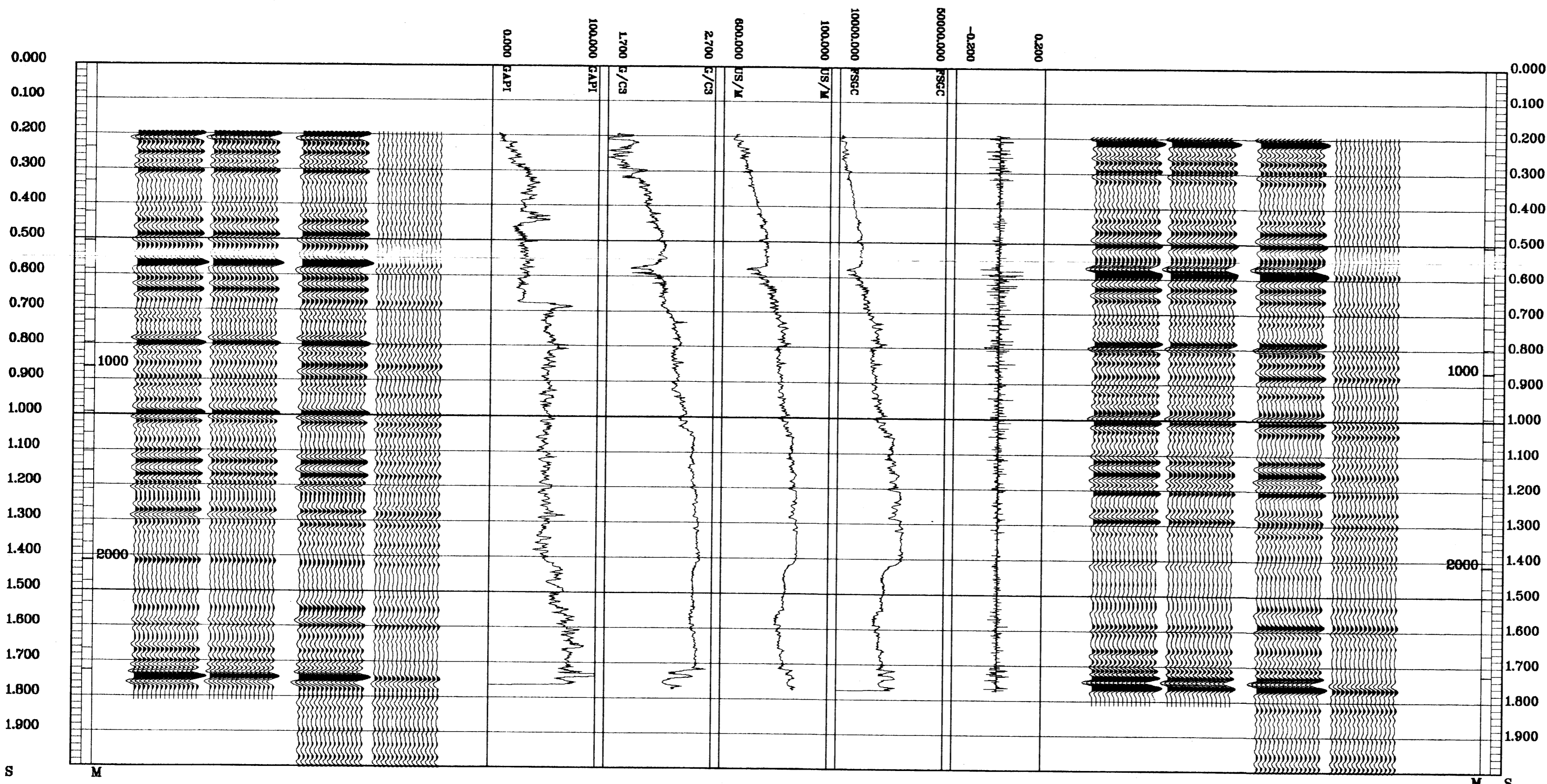
REMARKS

The well name, location and borehole reference data were furnished by the customer.

All interpretations are opinions based on inferences from electrical or other measurements and we cannot, and do not guarantee the accuracy or correctness of any interpretations, and we shall not, except in the case of gross or willful negligence on our part, be liable or responsible for any loss, costs, damages or expenses incurred or sustained by anyone resulting from any interpretations made by any of our officers, agents or employees. These interpretations are also subject to Clause 4 of our General Terms and Conditions as set out in our current Price Schedule.

\*\* GEOGRAM \*\*  
25 HERTZ ZERO PHASE  
RICKER WAVELET  
VERTICAL SCALE = 10 CM/SEC

MULTIPLES ONLY REVERSE POLARITY
PRIMARYS AND MULTIPLES REVERSE POLARITY
PRIMARYS WITH TRANSMISSION LOSS REVERSE POLARITY
PRIMARYS REVERSE POLARITY
REFLECTION
ACOUSTIC IMPEDANCE
SONIC
DENSITY
GAMMA RAY
MULTIPLES ONLY NORMAL POLARITY
PRIMARYS AND MULTIPLES NORMAL POLARITY
PRIMARYS WITH TRANSMISSION LOSS NORMAL POLARITY
PRIMARYS NORMAL POLARITY



COMPANY ESSO AUSTRALIA LTD.  
FIELD WILDCAT  
WELL SMILER-1  
COUNTRY AUSTRALIA

Schlumberger