

# Re-Con Smiler-b

MACKEREL-3 MK-A10

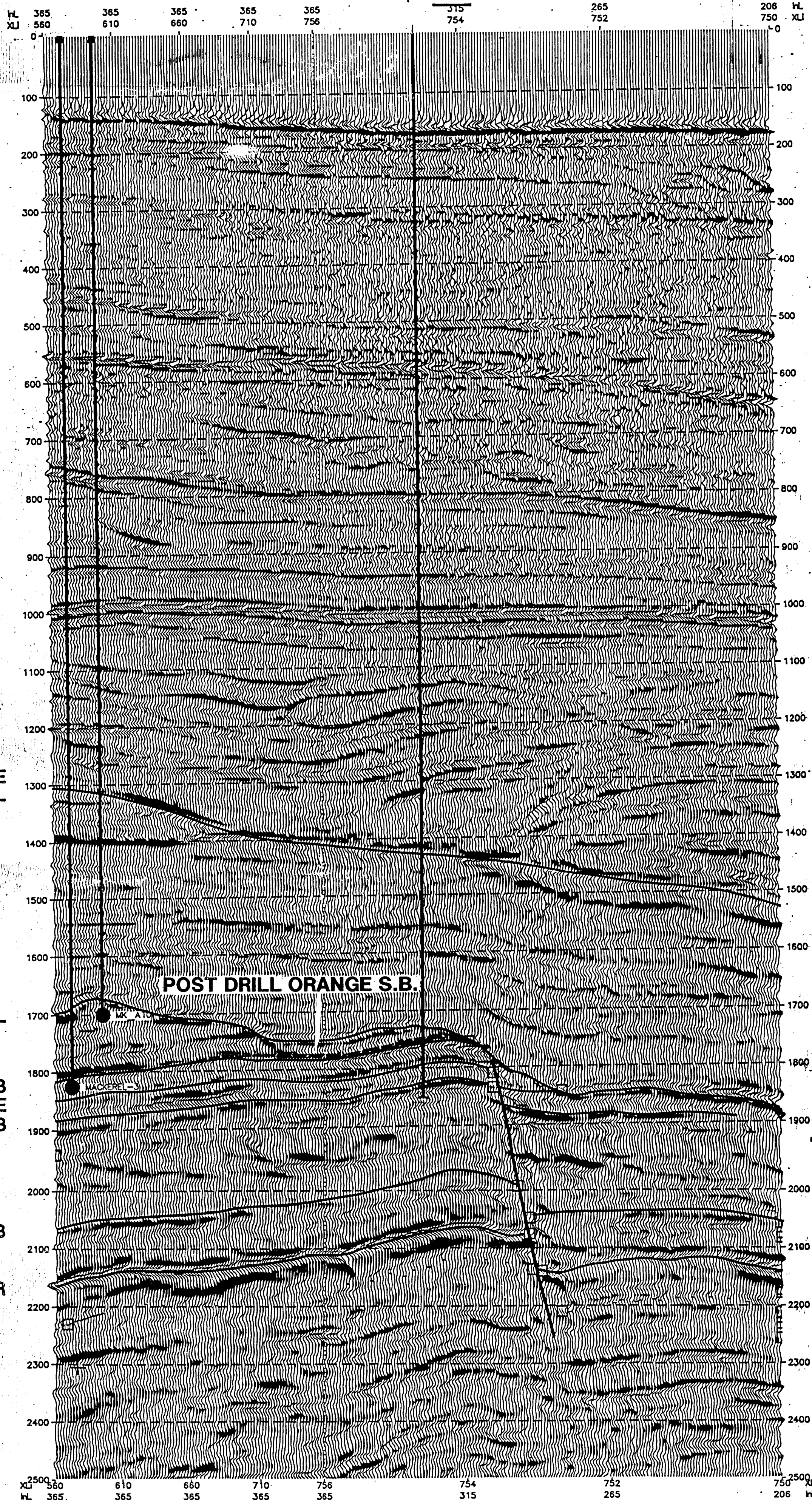
SMILER-1

NW ● ●

SE | SW



NE



BASE OF MIOCENE  
HIGH VELOCITY CHANNEL

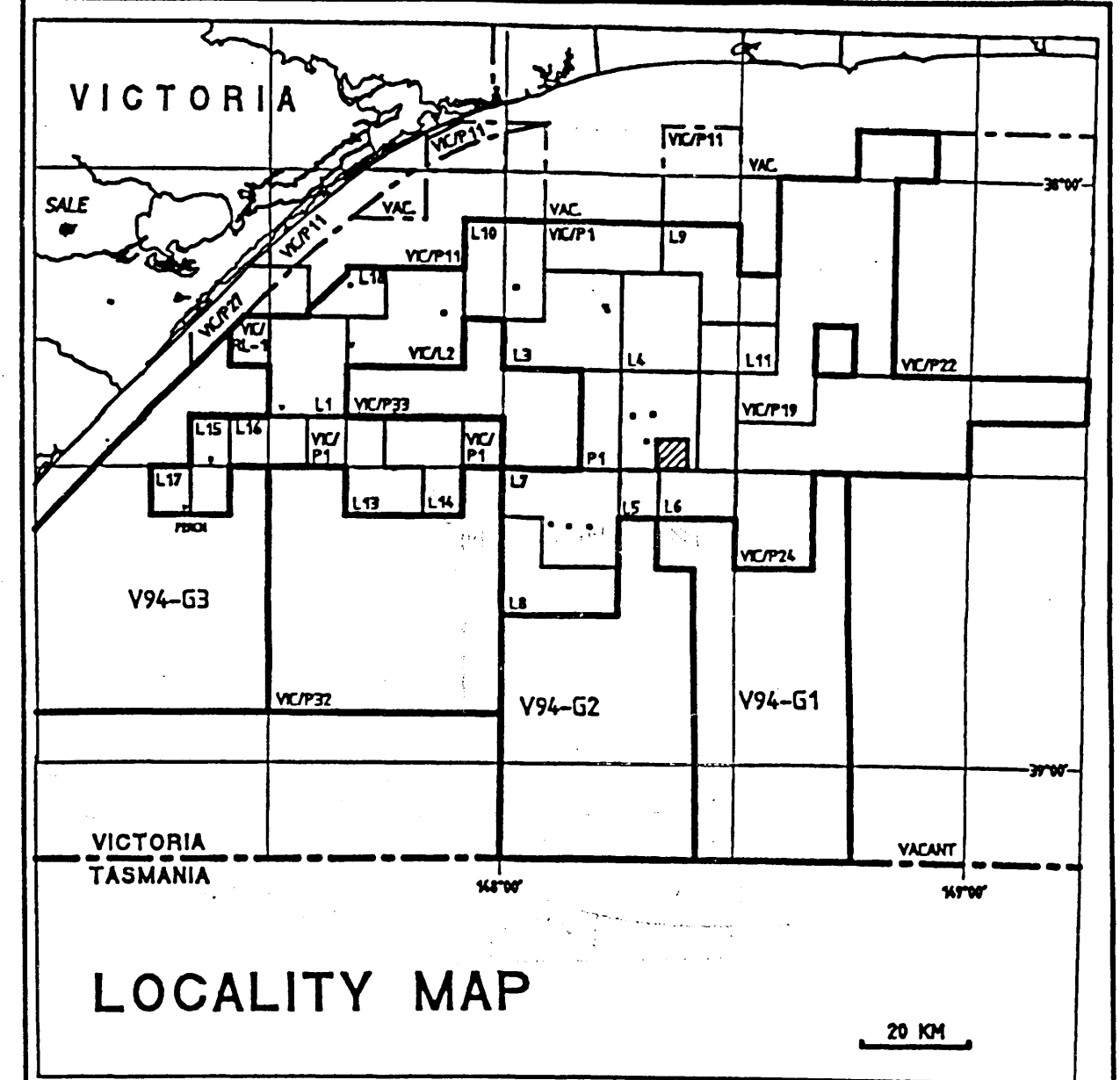
POST DRILL ORANGE S.B.

SPECTRUM ORANGE SB  
BASE GREEN SHALE  
BOTTLE GREEN SB

K-T SB

COALS 1 MARKER

1 km



LOCALITY MAP



ESSO EXPLORATION AND PRODUCTION AUSTRALIA INC.

## GIPPSLAND BASIN

VICTORIA

SMILER PROSPECT

RE-CON SMILER-B



AUTHOR: M.G. COUSINS

DRAFTED BY: M.J. NEILSON

TO ACCOMPANY: SMILER-1  
WELL COMPLETION REPORT

DATE: September 1994

SHEET:

ENCLOSURE: 7

AUST. NAT. SPHEROID - UTM PROJECTION, AMG ZONE 55 - CM-147