



GEOGRAM*

(Synthetic Seismogram)

*Mark of Schlumberger

Company: ESSO AUSTRALIA LTD.
 Well: SAWBELLY-1
 Field: WILDCAT
 Country: AUSTRALIA
 Reference No: 540770 Interval: 3067.9899 to 206.00
 Date Logged: 22-03-90 Date Processed: 19-04-90
 Location: 38 22' 31" 0" S 148 02' 05.9" E
 Elevations: KB: 21.00 DF: 20.70 GL: 63.00
 Permanent Datum: MSL Depth Units: METRES

LOG INFORMATION

FIELD RECORDING Engineer: A. HERNANDEZ Location: WMA Program Version: 32.4
 COMPUTATION Analyst: K. WOODALL Core: NSJ Station: 152
 ELEVATION ABOVE MEAN SEA LEVEL
 Logging Datum: 21.00
 Seismic Reference Datum: 0.00
 Sonic Calibration By/Check Shots: YES Sonic Edited By/Analyst: YES
 Two-Way Time Sample Interval: 2 ms Enforcement: offshore

True Vertical Depth Corrections Applied
 Source of True Vertical Depth Data:
 Maximum Hole Deviation:

Run	Date	Top Type	Base	Depth	Top	Bottom
1	07/02/90	BHC	171.2 @ 8.5 M	20.0 @ 8 M	18 M	832 M
2	22/03/90	BHC	121.4 @ 8.5 M	13.8 @ 7.9 M	7.9 M	302 M
1	22/03/90	OHM	40 M	5 M BELOW SL	10 M BELOW SL	42

GEOGRAM MODEL ASSUMPTIONS

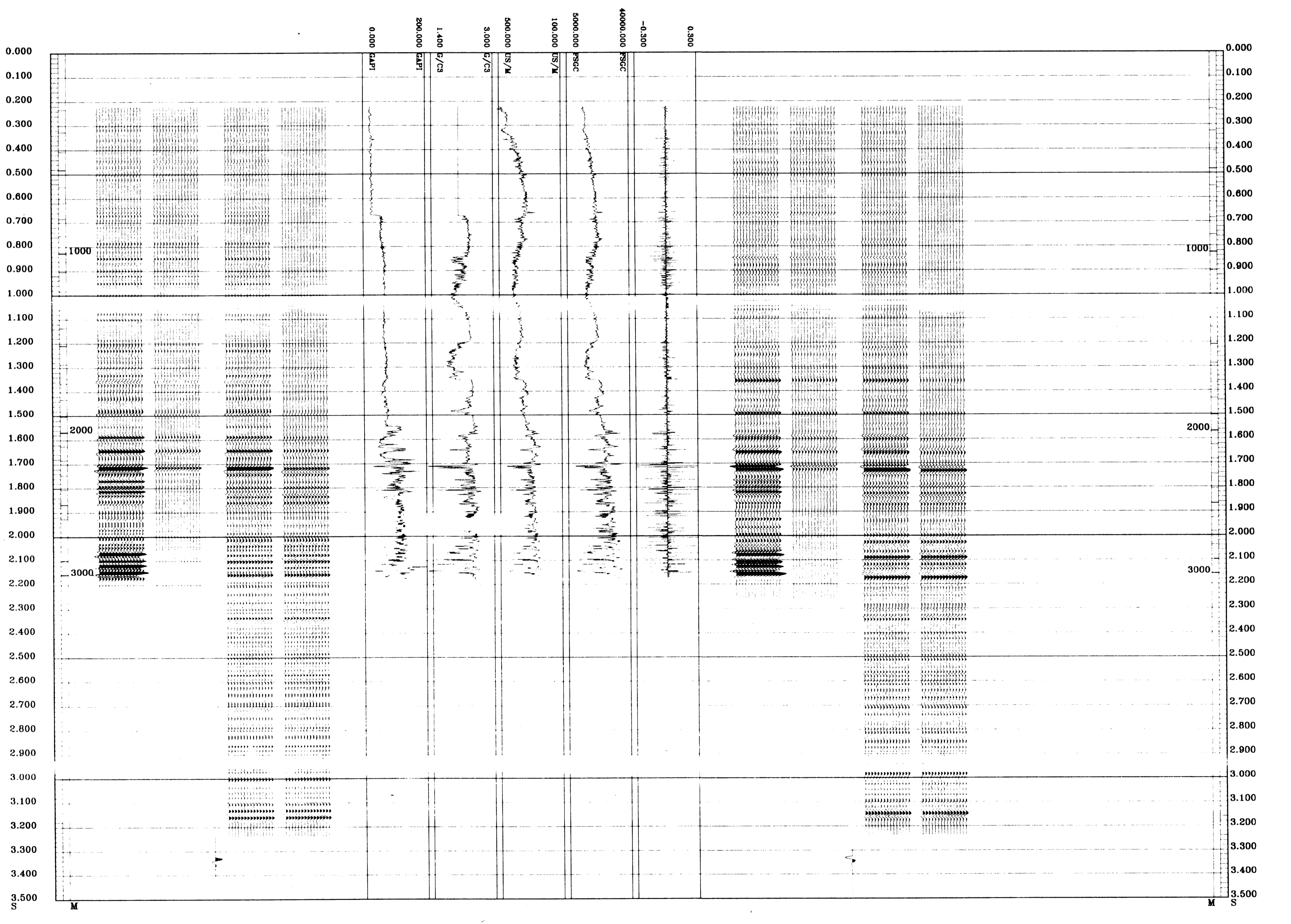
Equal time slice model of horizontal plane layers.
 Plane acoustic waves at normal incidence.
 No intrinsic attenuation.
 An upgoing wave, reflected by an increase in acoustic impedance with depth, is displayed as a white trough under normal polarity.
 POLARITY
 SIGNATURES
 All signatures displayed in the Geogram results correspond to a wavelet convolved with a reflection coefficient of -0.5 (A decrease in acoustic impedance with depth).

REMARKS

35 HERTZ MINIMUM PHASE RICKER WAVELET

All interpretations are opinions based on inferences from electrical or other measurements and we cannot, and do not guarantee the accuracy or correctness of any interpretations, and we shall not, except in the case of gross or willful negligence on our part, be liable or responsible for any loss, costs, damages or expenses incurred or sustained by anyone resulting from any interpretations made by any of our officers, agents or employees. These interpretations are also subject to Clause 4 of our General Terms and Conditions as set out in our current Price Schedule.

MULTIPLES ONLY REVERSE POLARITY
PRIMARIES AND MULTIPLES REVERSE POLARITY
PRIMARIES WITH TRANSMISSION LOSS REVERSE POLARITY
PRIMARIES REVERSE POLARITY
REFLECTION
ACOUSTIC IMPEDANCE
SONIC
DENSITY
GAMMA RAY
MULTIPLES ONLY NORMAL POLARITY
PRIMARIES AND MULTIPLES NORMAL POLARITY
PRIMARIES WITH TRANSMISSION LOSS NORMAL POLARITY
PRIMARIES NORMAL POLARITY



COMPANY ESSO AUSTRALIA LTD.
 FIELD WILDCAT
 WELL SAWBELLY-1
 COUNTRY AUSTRALIA

