

GEOGRAM*

(Synthetic Seismogram)



* Mark of Schlumberger

Company: ESSO AUSTRALIA LTD.
 Well: SAMBELLY-1
 Field: WILDCAT
 Country: AUSTRALIA
 Reference No: 540770 Interval: 3067.9988 to 206.00
 Date Logged: 22-03-90 Date Processed: 19-04-90
 Location: 38 22 31 'S 148 02 05.9 'E
 Elevations: KB: 21.00 DF: 20.70 GL: 63.00
 Permanent Datum: MSL Depth Units: METRES

LOG INFORMATION

FIELD RECORDING Engineer: A HERMANTO Location: WVA Program Version: 324
 COMPUTER: Analyst: K MORTONL Centre: AGU Baseline: 18.2
 Logging Datum: ELEVATION ABOVE MEAN SEA LEVEL 21.00
 Seismic Reference Datum: 0.00
 Sonic Calibration By Check Shots: YES Sonic Edited By Analyst: YES
 Two-Way Time Sample Interval: 2ms Environment: offshore
 True Vertical Depth Corrections Applied
 Source of True Vertical Depth Data: Maximum Hole Deviation:

Run	Date	Tool Type	Bitrate	Depth	Casing Size	Depth	Top Depth	Bottom Depth
1	07-02-90	BHC	1717 @ 818.6 M		27 @ 198 M	198 M	81.6 M	
2	25-03-90	BHC	1214 @ 3088 M		1338 @ 798 M	798 M	3082 M	
1	25-03-90	GM	GM	40 M	5 M BELOW SL	10 M BELOW SL	42	42

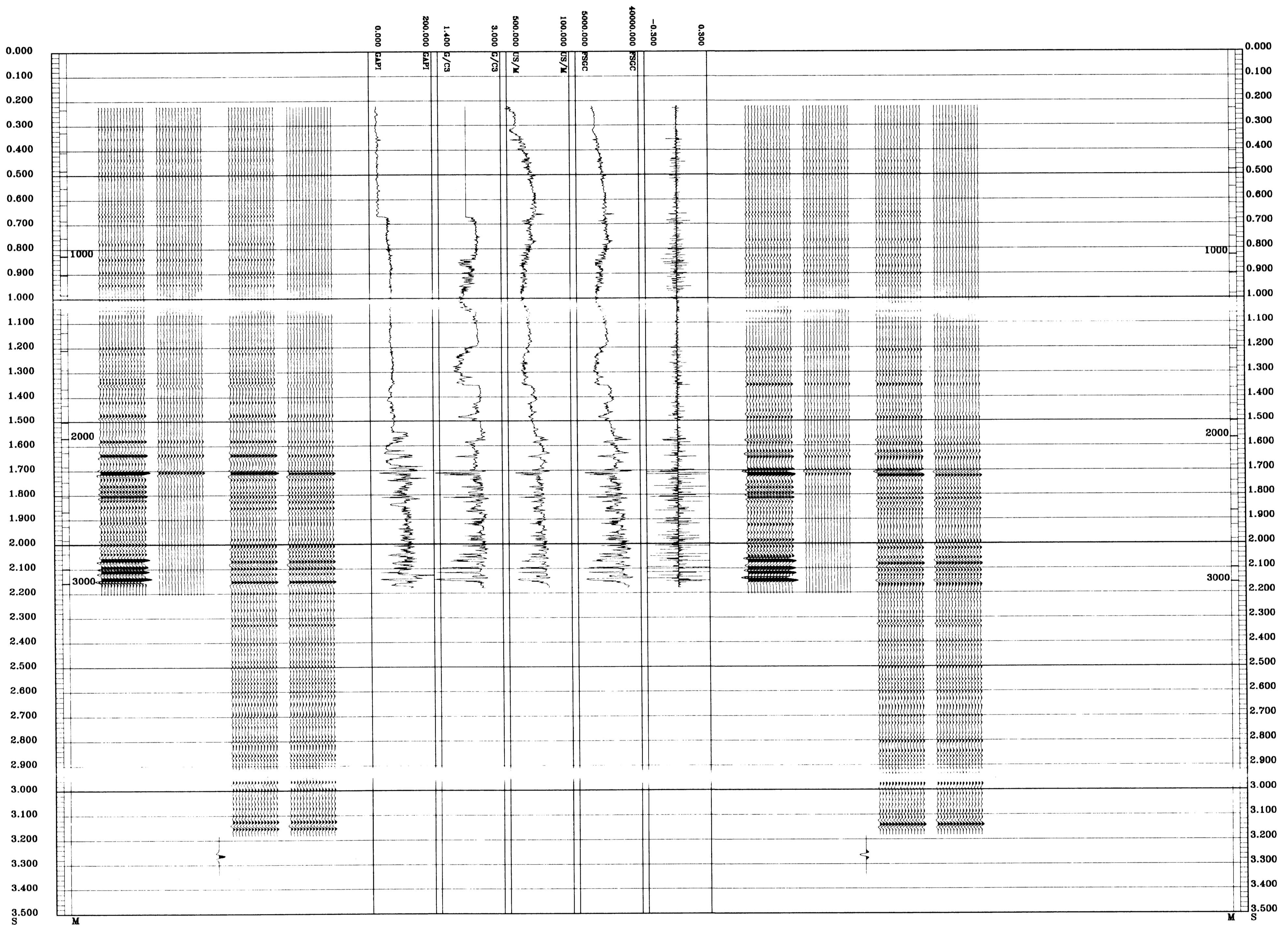
GEOGRAM MODEL ASSUMPTIONS

Equal time slice model of horizontal plane layers
 Plane acoustic waves at normal incidence.
 No intrinsic attenuation.
POLARITY
 An upgoing wave, reflected by an increase in acoustic impedance with depth, is displayed as a white trough under normal polarity.
SIGNATURES
 All signatures displayed in the Geogram results correspond to a wavelet convolved with a reflection coefficient of 0.5 (A decrease in acoustic impedance with depth).
 REMARKS

The well name, location and baseline reference data were furnished by the customer.

35 HERTZ ZERO PHASE RICKER WAVELET

MULTIPLES ONLY REVERSE POLARITY
PRIMARIES AND MULTIPLES REVERSE POLARITY
PRIMARIES WITH TRANSMISSION LOSS REVERSE POLARITY
PRIMARIES REVERSE POLARITY
REFLECTION
ACOUSTIC IMPEDANCE
SONIC
DENSITY
GAMMA RAY
MULTIPLES ONLY NORMAL POLARITY
PRIMARIES AND MULTIPLES NORMAL POLARITY
PRIMARIES WITH TRANSMISSION LOSS NORMAL POLARITY
PRIMARIES NORMAL POLARITY



COMPANY ESSO AUSTRALIA LTD.
 FIELD WILDCAT
 WELL SAWBELLY-1
 COUNTRY AUSTRALIA

