

SEISMOGRAPH SERVICE (ENGLAND) LTD.

COMPANY : UNION TEXAS AUSTRALIA INC.
 WELL : PISCES NO. 1
 LOCATION : 39° 03' 37.055" S
 148 30 41.270 E

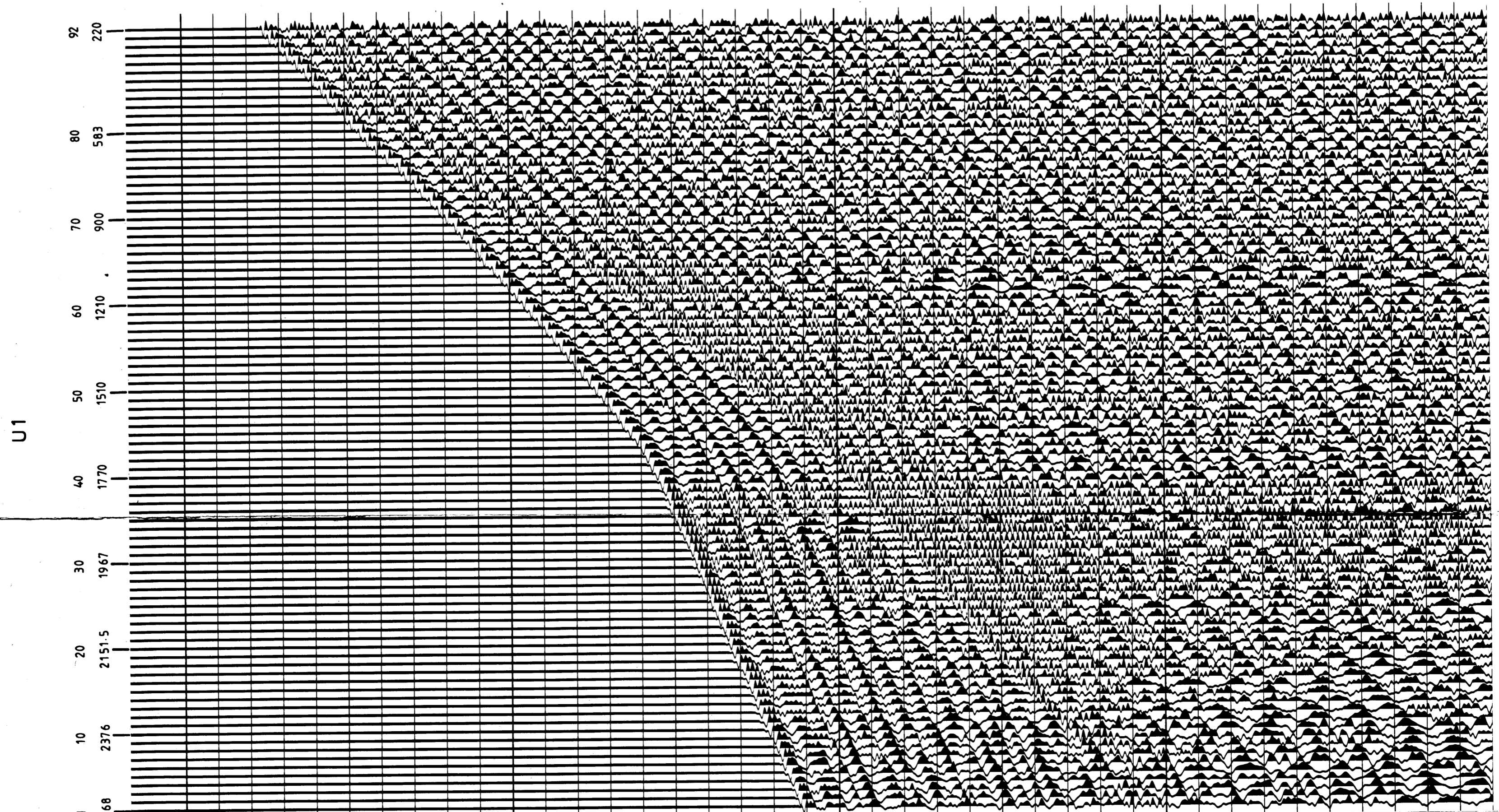
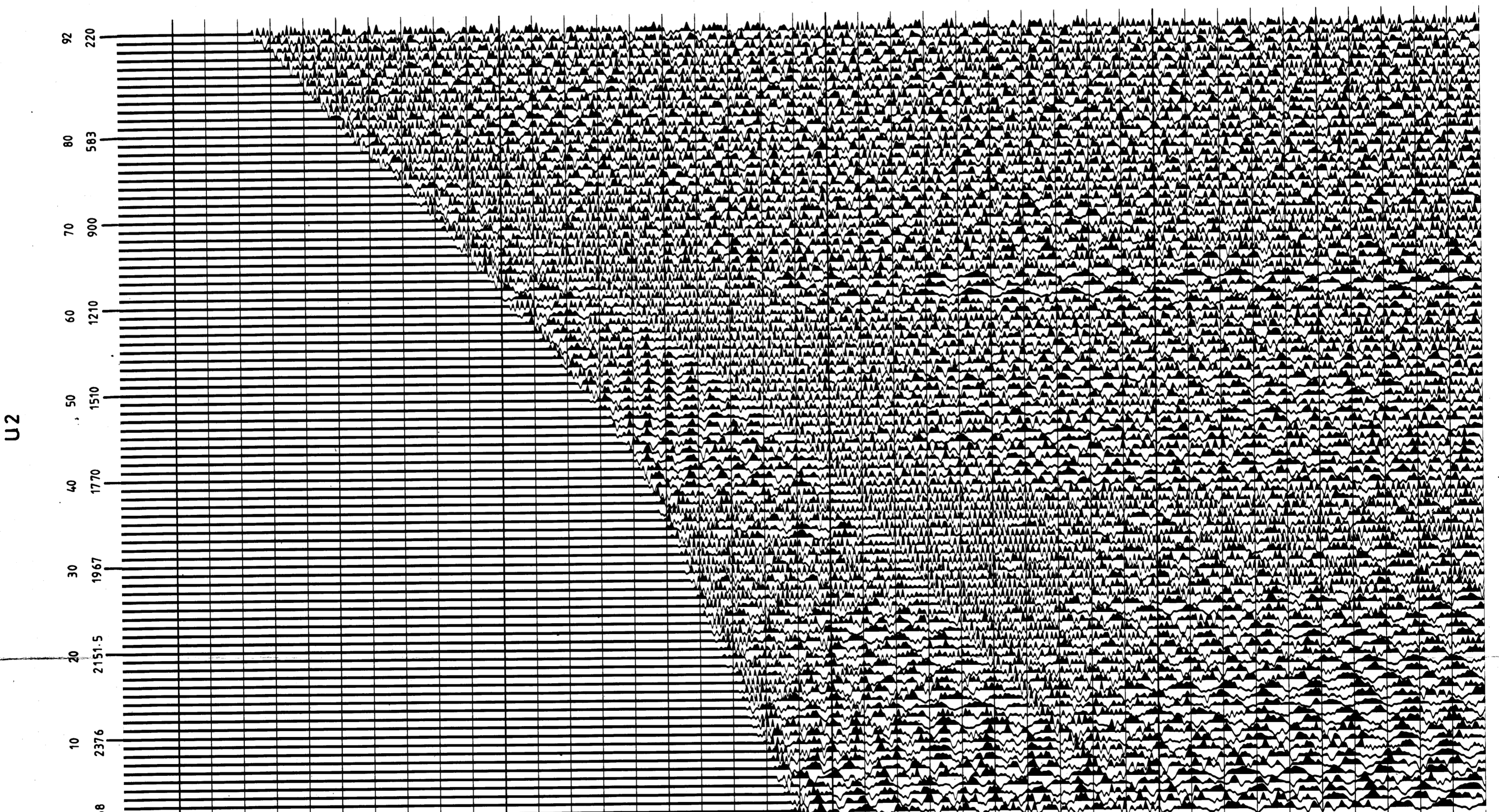
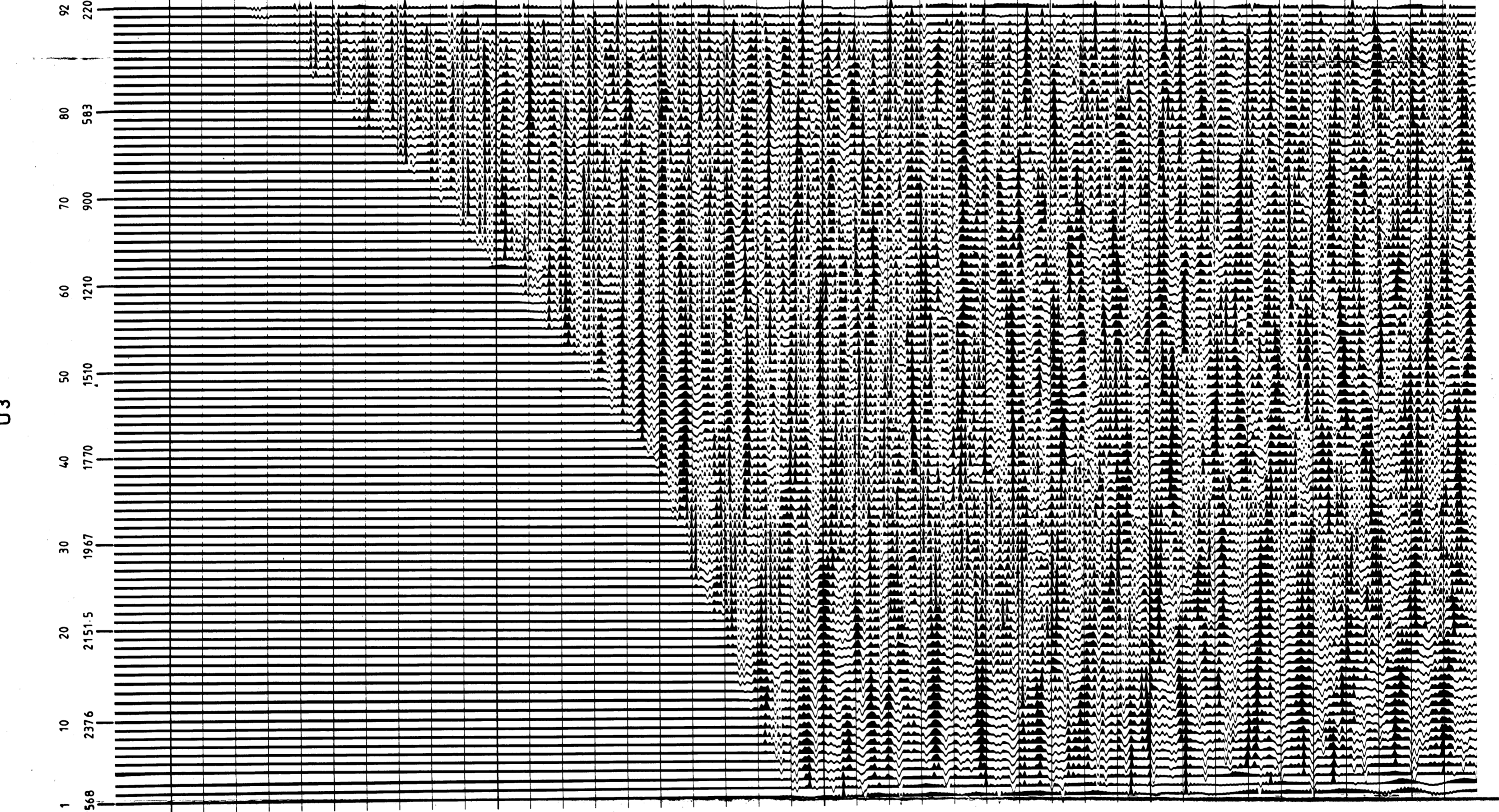
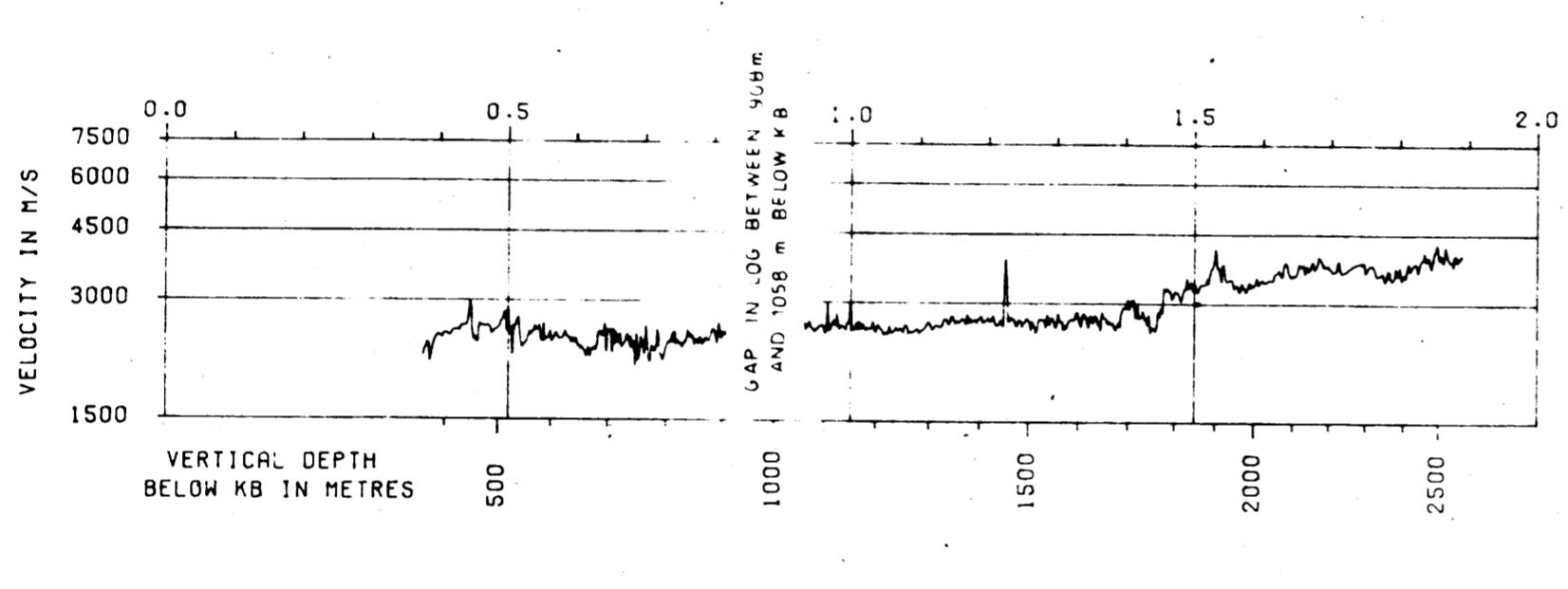
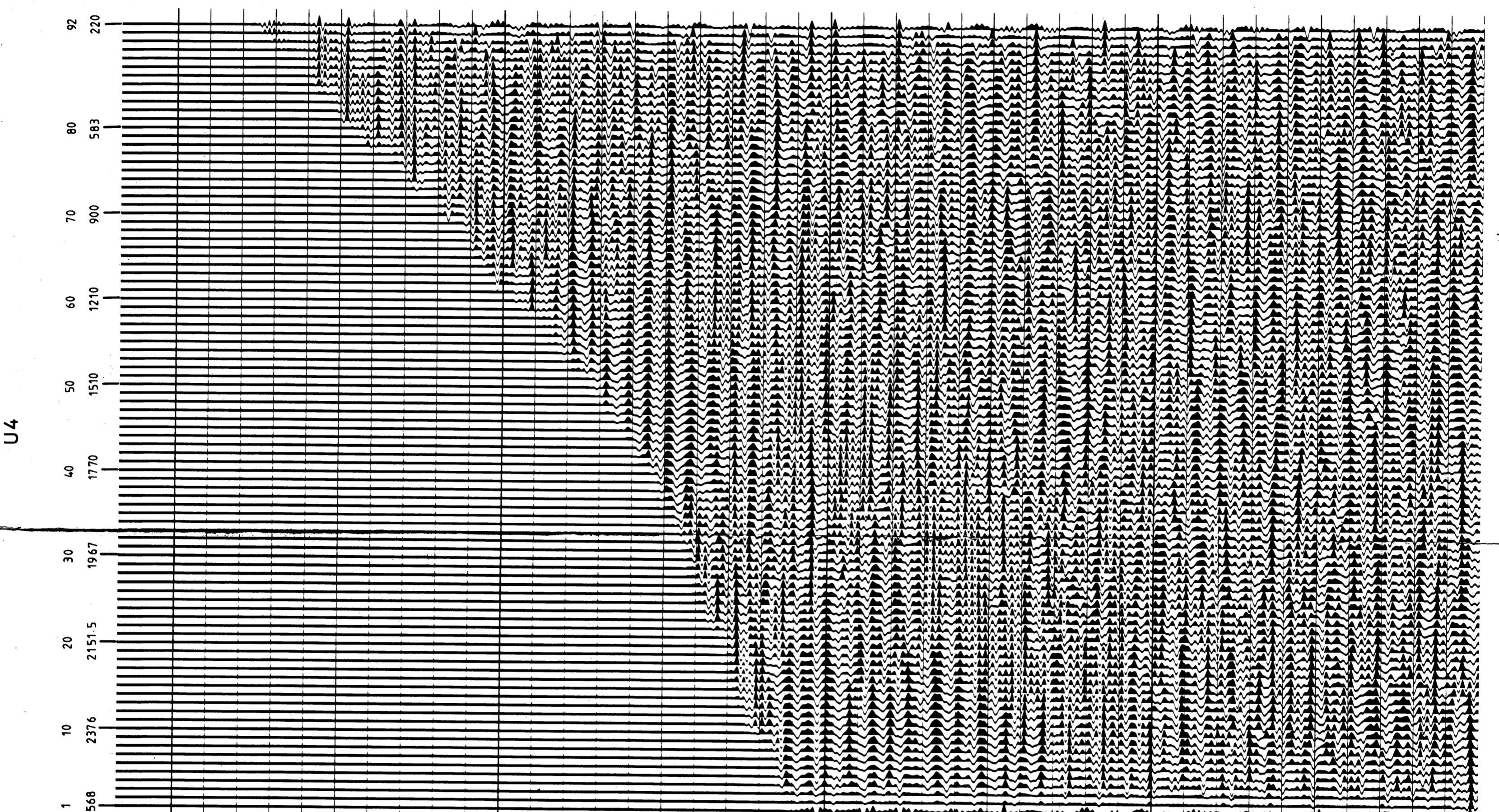
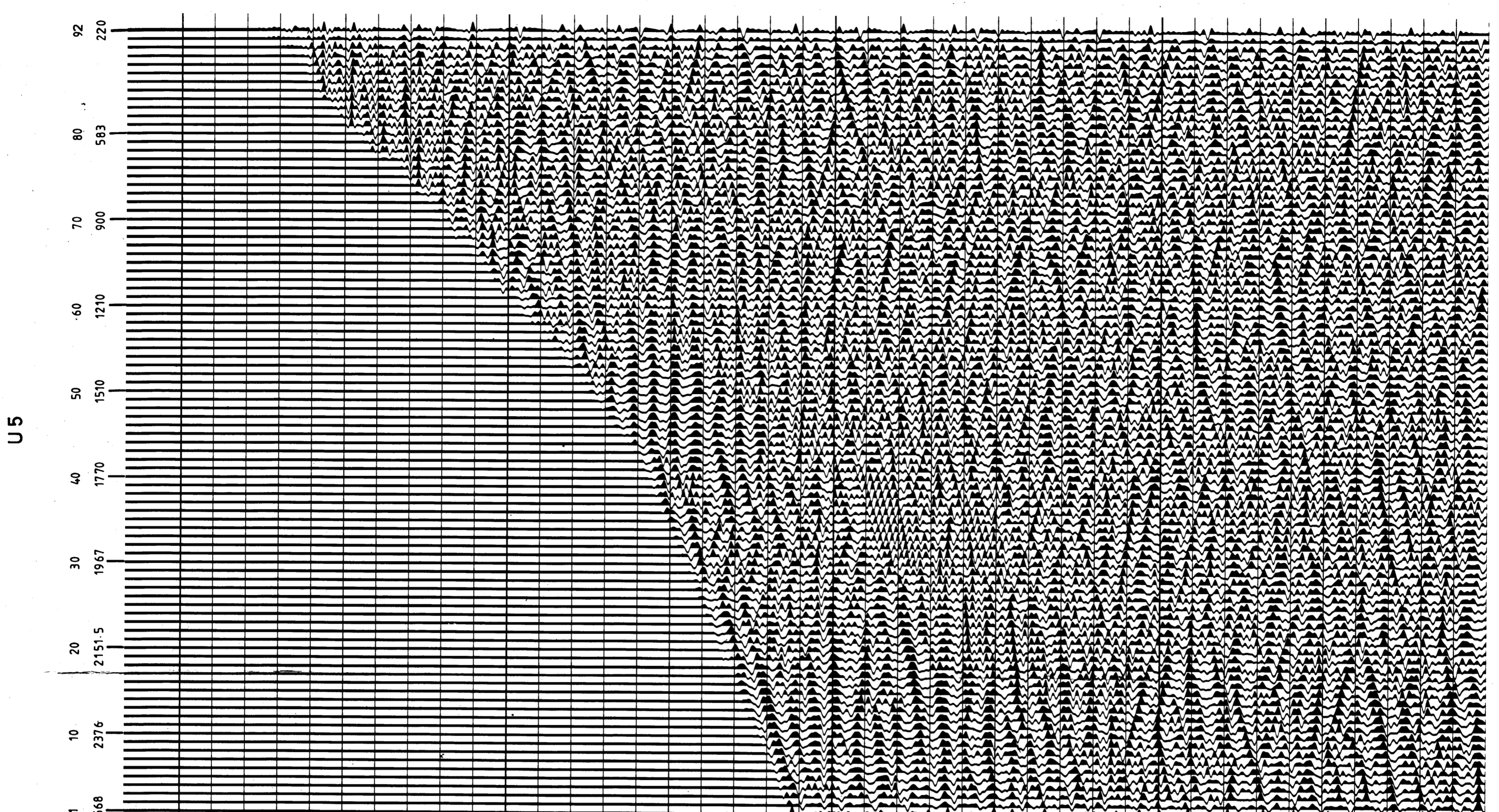
DISPLAY : VSP UPGOING EVENTS
 PLUS TRACKING FILTER
 ENHANCING DIFFRACTION EFFECTS
 (POLARITY 2)

TIME SCALE : 1 S = 3.75 IN
 DEPTH SCALE : 10 TRACES/INCH
 DATE PROCESSED : AUGUST 1982

FIELD ACQUISITION
 SURVEY DATE : 9TH MAY 1982
 SOURCE : 40 CU-IN SINGLE BOLT AIRGUN
 SOURCE DEPTH : 15.2 M
 SOURCE MONITOR : NEAR FIELD HYDROPHONE
 MONITOR DEPTH : 18.3 M
 RECORDING EQUIPMENT : DIGITAL CART.
 WELL GEOPHONE : MS
 SURFACE ELEVATION : MSL
 VSP DEPTH : MSZ M

PROCESSING SEQUENCE
 U1. EDIT
 REFORMED TRACE ALIGNMENT
 SOURCE STAMPING
 SOURCE STAMPING DEPTH TERCES
 SOURCE STAMPING CONVOLUTION (GOODS DERIVATION KINDOM)
 AMPLITUDE RECOVERY * 1.0
 BAND PASS FILTER 1-5-80-100 HZ
 U2. AS FOR U1 PLUS
 DOWNGOING WAVE SUBTRACTION
 BAND PASS FILTER 1-5-80-100 HZ
 U3. AS FOR U2 PLUS
 BAND PASS FILTER 1-5-80-100 HZ
 U4. AS FOR U3 EXCEPT
 BAND PASS FILTER 1-5-80-100 HZ REPLACED BY
 BAND PASS FILTER 1-5-80-100 HZ
 BEFORE AND AFTER LOGAN PACK
 TIME VARIANT FILTER (FROM SEISMIC SECTION LINE GC80-11A)
 AT 0.16 S 15 - 65 HZ
 AT 1.16 S 12 - 55 HZ
 U5. AS FOR U4 EXCEPT
 13:1 MEDIAN PICK REPLACED BY
 TRACKING FILTER (13:1 MEDIAN PICK, -8 TO +8 MS/TR)
 U1-U5. TRACE EQUALISATION (100 MS WINDOW, 50 MS OVERLAP)
 PRIOR TO DISPLAY

POLARITY: UPGOING COMPRESSION WAVE IS REPRESENTED BY A BLACK PEAK
 THE DOWNGOING FIRST ARRIVAL COMPRESSION WAVE IS A WHITE TROUGH



DEPTH IN m BELOW KB : 0.0, 1.0, 2.0, 3.0, 4.0
 TIME IN SECONDS : 1, 10, 20, 30, 40, 50, 60, 70, 80, 92
 LEVEL No : 1, 10, 20, 30, 40, 50, 60, 70, 80, 92
 DEPTH IN m BELOW KB : 2568, 2376, 2151.5, 1967, 1770, 1510, 1210, 900, 583, 220