

AUSTRALIAN LOG INTERPRETATION CENTRE

SEISMIC CALIBRATION LOG
ADJUSTED CONTINUOUS VELOCITY LOG



SCHLUMBERGER

COMPANY ESSO AUSTRALIA LTD.
WELL PERCH #2
FIELD WILDCAT
COUNTRY AUSTRALIA

LOCATION COORDINATES:
LATITUDE 038 34 23.11 S
LONGITUDE 147 19 57.61 E

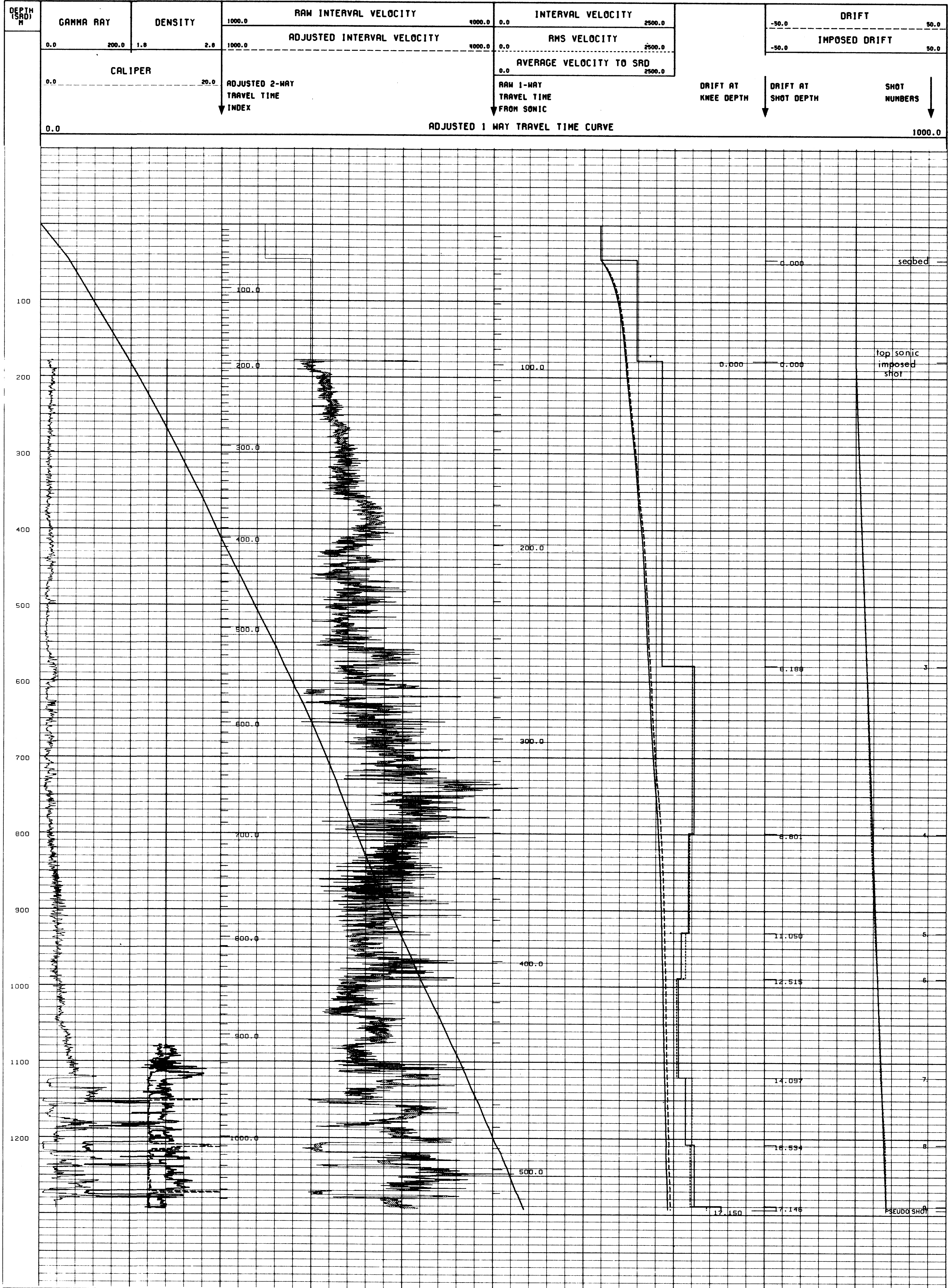
ELEVATIONS:
KB 21.0 M
DF 20.7 M
CL -45.5 M

COMPUTER CENTER RSJ
ANALYST R. BUNT
JOB REFERENCE S40246
DATE 14-MAR-85
SEISMIC REFERENCE DATUM NSL

UNITS: METRES
PERMANENT DATUM NSL
LOGS MEASURED FROM DF
DRILLING MEASURED FROM NSL
VELOCITY LOG DEPTHS REFERRED TO NSL
DATES OF SONIC RUNS: 14-FEB-85, 1-MAR-85
DATES OF CHECK SHOTS RUNS: 1-MAR-85
WELL TOTAL DEPTH 1315 M
TOTAL NUMBER OF CHECK SHOTS LEVELS: 9
WELL DEVIATION: NIL

SONIC RUN 2
DATE LOGGED 1-MAR-85
BIT SIZE/DEPTH 12.25/1321 M
CGSING SIZE/DEPTH 13.375/800 M
BOT INTERNAL 1315 M
TOP INTERNAL 199 M
SONDE TYPE MSC-B

GUN ELEVATION -9.1M ANSL
RECEL. ELEVATION -9.1M ANSL
GUN OFFSET 40 M
HYDRO OFFSET 40 M



COMPANY ESSO AUSTRALIA LTD.
FIELD WILDCAT
WELL PERCH #2
COUNTRY AUSTRALIA

