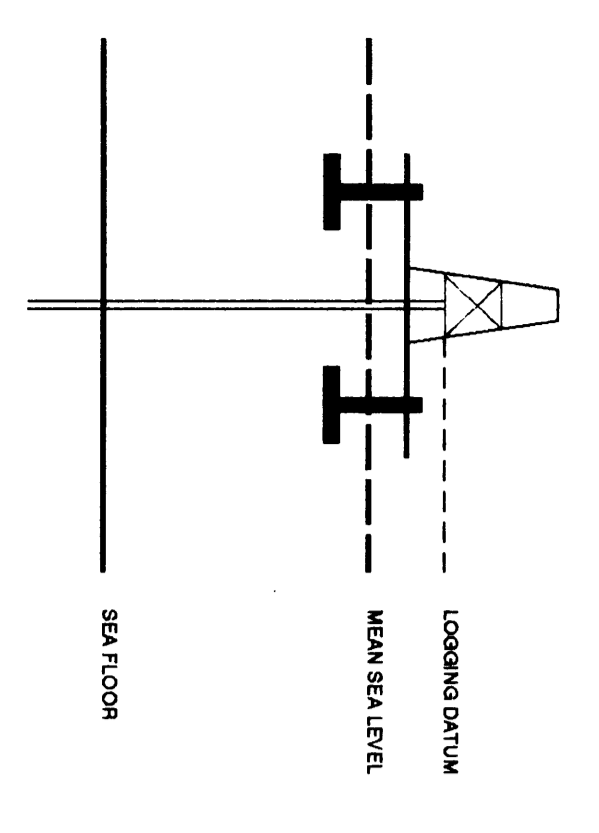




VERTICAL SEISMIC PROFILE

ZERO OFFSET VSP **PLOT 5**
WAVESHAPING & CORRIDOR STACK

Company: ESSO AUSTRALIA LTD.
Well: ORANGE ROUGHY-1
Field: WILDCAT
Country: AUSTRALIA
Reference No.: SV1591133/951134 **Interval:** 281.00 to 164.00
Date Logged: 27-JUN-1995 **Date Processed:** 21-JULY-1995
Location: 088 34 56.99° S 148 02 30.99° E
Elevations: KB: 25.00 DF: 24.70 GL: -75.00
Depth Units: METRES
FIELD RECORDING: Engineer: P. M. LISBANO Location: VSA Program Version: 704-87
COMPUTATION: Analyst: A. WISSONO Cards: 570 Basefile: 80.8
ELEVATION ABOVE MEAN SEA LEVEL
Logging Datum: 25.00
Seismic Reference Datum: 0.00



Total Number of Levels: 38

Depth Reference		SRD		SRD		SRD		SRD	
Time	Reference	Depth	SRD	Depth	SRD	Depth	SRD	Depth	SRD
ONE	18-JUN-1995	AS-LDR	17.5 IN			62 M	793 M		
TWO	28-JUN-1995	DL-DL-D-43	12.28 IN			741 M	2003 M		
THREE	27-06-1995	50 M	50 M			5 M BELOW MSL	10 M BELOW MSL	248 DEG	248 DEG

The well name, location and borehole reference data were furnished by the customer.

All interpretations are opinions based on inferences from electrical or other measurements and we cannot, and do not guarantee the accuracy or correctness of any interpretations, and we shall not, except in the case of gross or willful negligence on our part, be liable or responsible for any loss, costs, damages or expense incurred or sustained by anyone resulting from any interpretations made by any of our officers, agents or employees. These interpretations are also subject to Clause 4 of our General Terms and Conditions as set out in our current Price Schedule.

*** CORRIDOR STACK + AGC ***
 AGC WINDOW : 300 MS
 POLARITY (S.E.G.) : REVERSE

*** CORRIDOR STACK ***
 CORRIDOR WINDOW : 150 MS
 POLARITY (S.E.G.) : REVERSE

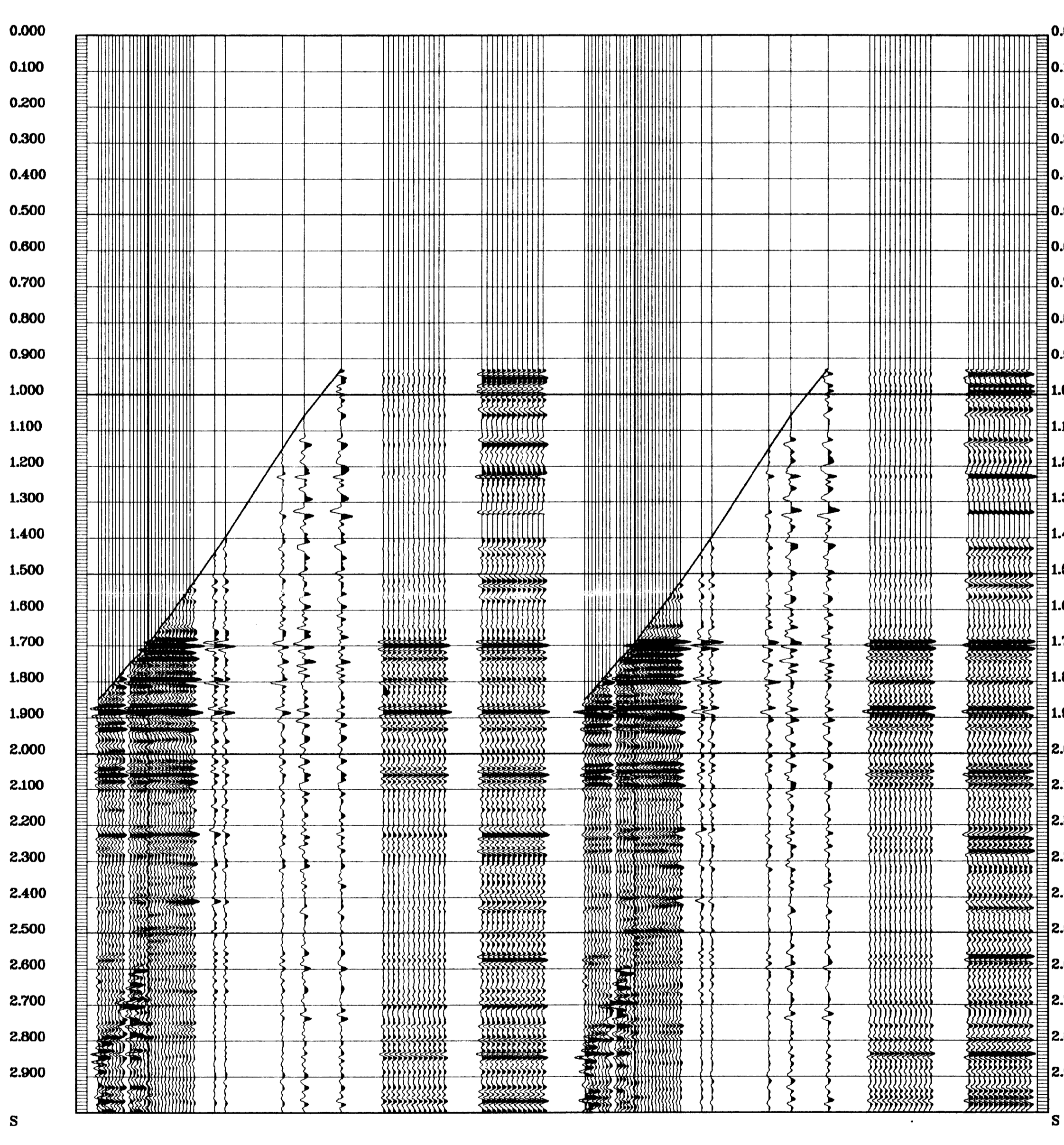
**** WAVESHAPING ****
 WAVESHAPING DECONVOLUTION
 ZERO PHASE
 ENHANCED UPGOING WAVEFIELD
 PROCESSING SEQUENCE:
 MEDIAN STACK APPLIED
 STATIC CORRECTION TO MSL: APPLIED
 BAND PASS FILTER : 5-95 HZ
 NORMALIZATION GATE : 7/10-1.00
 TIME VARYING GAIN : 7/10-1.00

*** CORRIDOR STACK + AGC ***
 AGC WINDOW : 300 MS
 POLARITY (S.E.G.) : NORMAL

*** CORRIDOR STACK ***
 CORRIDOR WINDOW : 150 MS
 POLARITY (S.E.G.) : NORMAL

**** WAVESHAPING ****
 WAVESHAPING DECONVOLUTION
 ZERO PHASE
 ENHANCED UPGOING WAVEFIELD
 PROCESSING SEQUENCE:
 MEDIAN STACK APPLIED
 STATIC CORRECTION TO MSL: APPLIED
 BAND PASS FILTER : 5-95 HZ
 NORMALIZATION GATE : 7/10-1.00
 TIME VARYING GAIN : 7/10-1.00

RAW DEPTH	TRUE VERTICAL DEPTH MSL	TRANSIT TIME S	LEVEL NO
0.0	0.0	6.000	0
0.0	0.0	6.000	1
0.0	0.0	6.000	2
0.0	0.0	6.000	3
0.0	0.0	6.000	4
0.0	0.0	6.000	5
0.0	0.0	6.000	6
0.0	0.0	6.000	7
0.0	0.0	6.000	8
0.0	0.0	6.000	9
0.0	0.0	6.000	10
0.0	0.0	6.000	11
0.0	0.0	6.000	12
0.0	0.0	6.000	13
0.0	0.0	6.000	14
0.0	0.0	6.000	15
0.0	0.0	6.000	16
0.0	0.0	6.000	17
0.0	0.0	6.000	18
0.0	0.0	6.000	19
0.0	0.0	6.000	20
0.0	0.0	6.000	21
0.0	0.0	6.000	22
0.0	0.0	6.000	23
0.0	0.0	6.000	24
0.0	0.0	6.000	25
0.0	0.0	6.000	26
0.0	0.0	6.000	27
0.0	0.0	6.000	28
0.0	0.0	6.000	29
0.0	0.0	6.000	30
0.0	0.0	6.000	31
0.0	0.0	6.000	32
0.0	0.0	6.000	33
0.0	0.0	6.000	34
0.0	0.0	6.000	35
0.0	0.0	6.000	36
0.0	0.0	6.000	37
0.0	0.0	6.000	38



COMPANY ESSO AUSTRALIA LTD.
 FIELD WILDCAT
 WELL ORANGE ROUGHY 1
 COUNTRY AUSTRALIA

