



GEOGRAM*

(Synthetic Seismogram)

45 HZ

Company: ESSO AUSTRALIA LTD.
Well: MOONFISH2
Field: MOONFISH
Country: AUSTRALIA
Reference No: SYJ 561081
Date Logged: 19 JAN 1995
Location: 039 08 57.698° S
Elevations: KB: 30.90 DF: 30.50 GL: -53.90
Permanet Datum: MSL
Depth Units: METRES

LOG INFORMATION

FIELD RECORDING: Engineer: RON JONSON Location: VEA Program Version: 700-427
COMPUTATION: Analyst: A WILSONO Centre: SYJ Station: 20.5

Logging Datum: ELEVATION ABOVE MEAN SEA LEVEL
30.90
Seismic Reference Datum: 0.00

Sonic Calibration by Check Shots: YES Sonic Edited by Analyst: YES

Two-Way Time Sample Interval: 2 ms Environment: OFFSHORE

True Vertical Depth Corrections Applied: YES
Source of True Vertical Depth Data: Maximum Hole Deviation: 24.1 DEG

Run	Date	Tool Type	Bit Saw Depth	Casing Saw Depth	Top Depth	Bottom Depth
ONE	18-01-94	AS-GR	17.5 IN		141 M	683 M
TWO	18-01-95	DS-GR	12.28 IN		795 M	2296 M
TWO	18-01-95	DL-CNL	12.28 IN		1475 M	2296 M
VSP	DATA	GRN	GRN	GRN	GRN	GRN
ONE	18-01-95	MOVING	MOVING	5.0 M BELOW HBL	10.0 M BELOW HBL	20.185 DEG 30.196 DEG

GEOGRAM MODEL ASSUMPTIONS

Equal time slant model of horizontal plane layers.
Plane acoustic waves at normal incidence.
No intrinsic attenuation.
POLARITY
An upgoing wave, reflected by an increase in acoustic impedance with depth, is displayed as a white trough under normal polarity.
SIGNATURES
All signatures displayed in the Geogram results correspond to a wavelet convolved with a reflection coefficient of 0.5 (A decrease in acoustic impedance with depth).

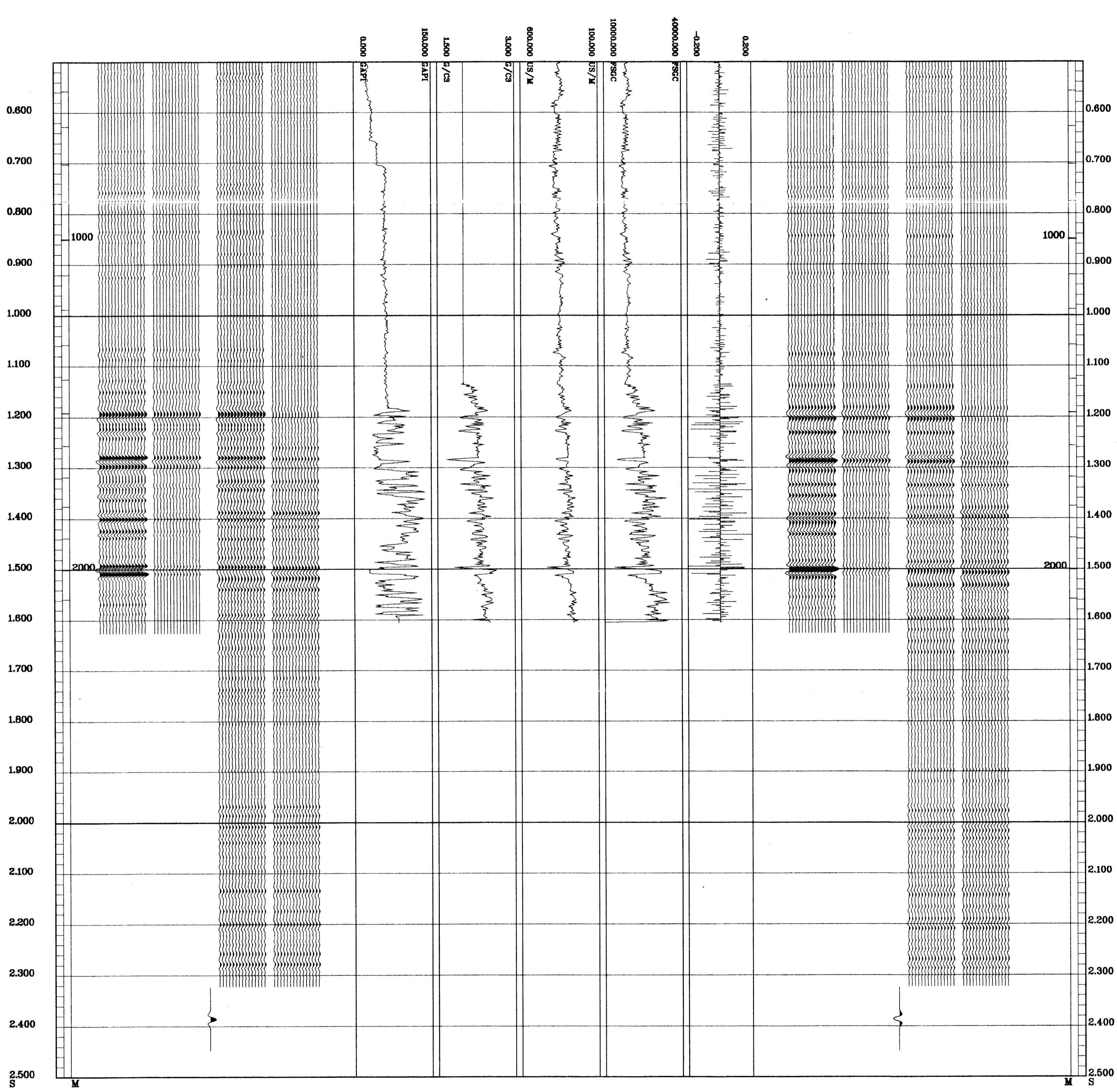
REMARKS

The well name, location and borehole reference data were furnished by the customer.

All interpretations are opinions based on inferences from electrical or other measurements and we cannot, and do not guarantee the accuracy or correctness of any interpretations, and we shall not be held responsible for any damage or expense incurred or sustained by anyone resulting from any interpretations made by any of our officers, agents or employees. These interpretations are also subject to Clause 4 of our General Terms and Conditions as set out in our current Price Schedule.

** GEOGRAM **
45 HERTZ ZERO PHASE
RICKER WAVELET
VERTICAL SCALE = 20 CM/SEC

MULTIPLES ONLY REVERSE POLARITY
PRIMARIES AND MULTIPLES REVERSE POLARITY
PRIMARIES WITH TRANSMISSION LOSS REVERSE POLARITY
PRIMARIES REVERSE POLARITY
REFLECTION
ACOUSTIC IMPEDANCE
SONIC
DENSITY
GAMMA RAY
MULTIPLES ONLY NORMAL POLARITY
PRIMARIES AND MULTIPLES NORMAL POLARITY
PRIMARIES WITH TRANSMISSION LOSS NORMAL POLARITY
PRIMARIES NORMAL POLARITY



COMPANY ESSO AUSTRALIA LTD.
FIELD MOONFISH
WELL MOONFISH-2
COUNTRY AUSTRALIA

