



WELL LOGGING SERVICE

WELL KINGFISH NO. 6  
 COMPANY ESSO  
 COUNTY GIPPSLAND BASIN  
 STATE VICTORIA

**LEGEND**  
 DEPTH CORRESPONDS TO DRILL  
 PIPE MEASUREMENTS.  
 NB NEW BIT  
 NCB NEW CORE BIT  
 DST DRILL STEM TEST  
 NR NO RETURNS  
 TG TRIP GAS  
 CO CIRCULATE OUT RETURNS

**LITHOLOGY**

SAND	GRANITE WASH	LIME STONE	CHERT
SHALE	GYP ANHYDRITE	DOLOMITE	LIGNITE

**CUTTINGS ANALYSIS**

TOTAL GAS \_\_\_\_\_  
 METHANE \_\_\_\_\_  
 LIQUID HYDROCARBONS (C<sub>6+</sub>) \_\_\_\_\_

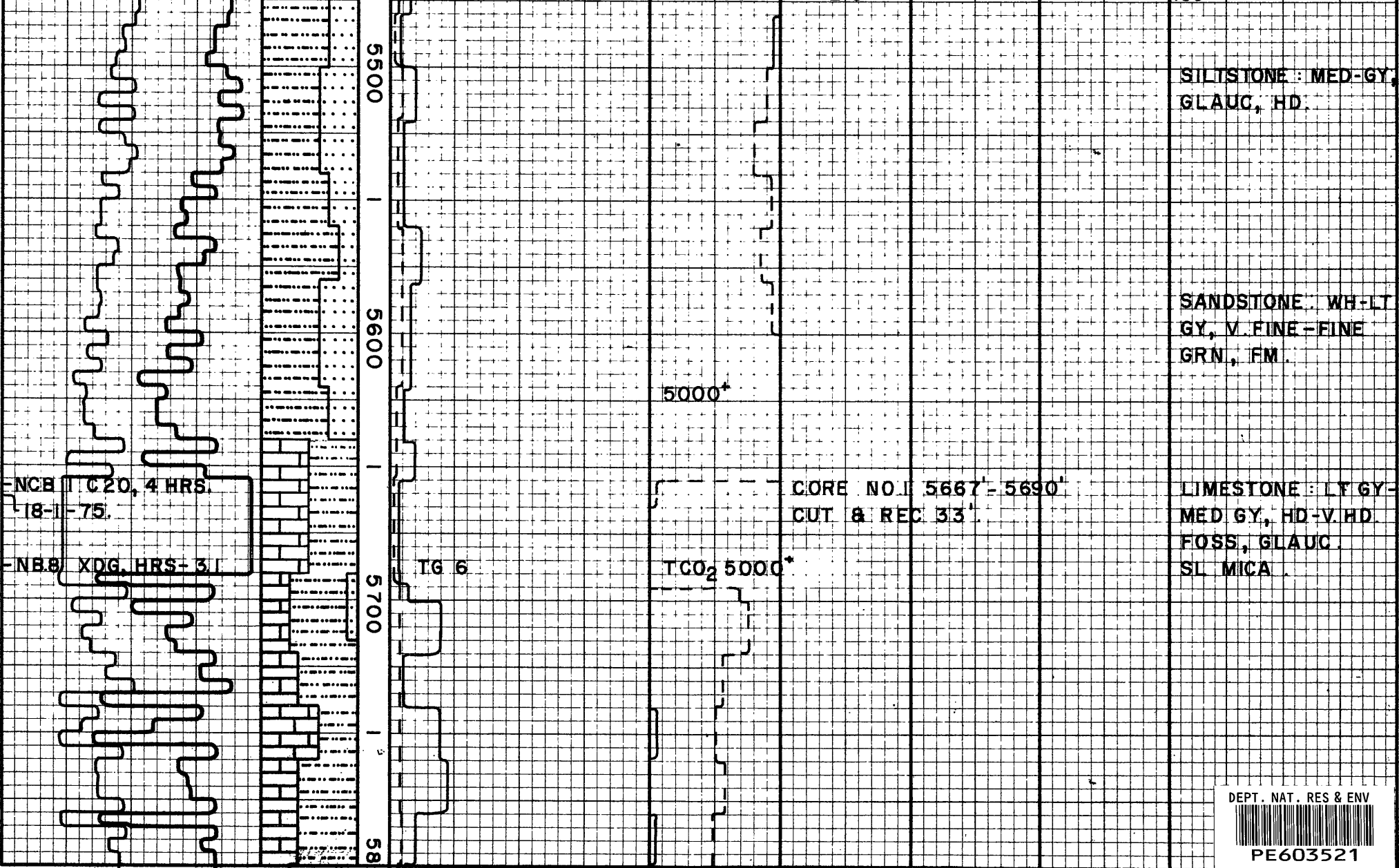
**ppm HYDROCARBONS IN MUD M=1000**

**DRILLING RATE**  
 FT PER HR.  MIN. PER FT.  
 150 100 50  
 'd' 1.5 2.0 2.5  
 VISUAL POROSITY GST

**LITHOLOGY**

OIL TSG  
 C<sub>1</sub> 5M 10M  
 C<sub>2</sub> 25 00  
 C<sub>3</sub> 2 5  
 C<sub>4</sub> 1M  
 C<sub>5+</sub> 1M

OIL TSG



DEPT. NAT. RES & ENV



PE603521