



WELL COMPANY KINGFISH NO. 5  
 COUNTY ESSO  
 STATE GIPPSLAND BASIN  
 VICTORIA

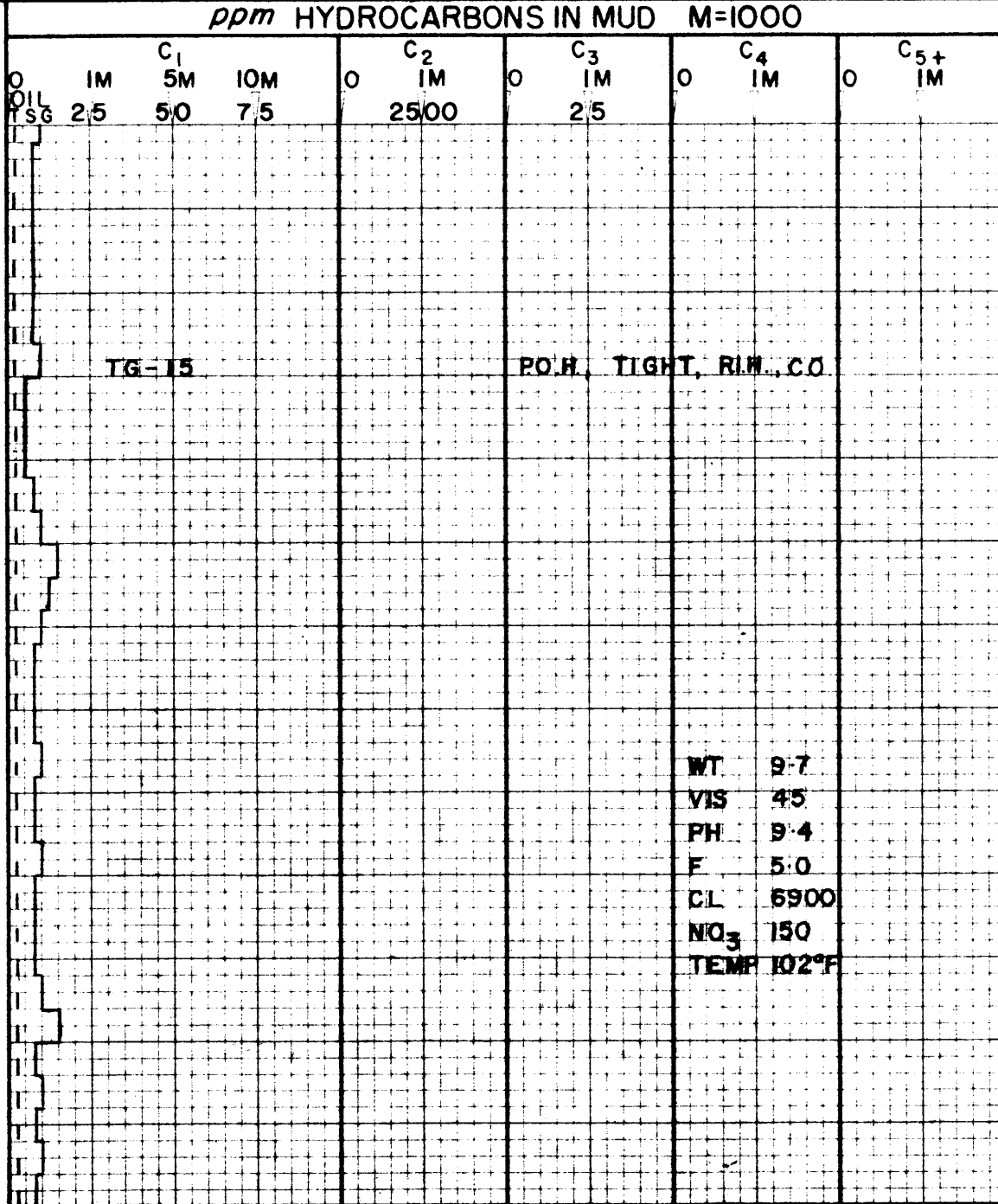
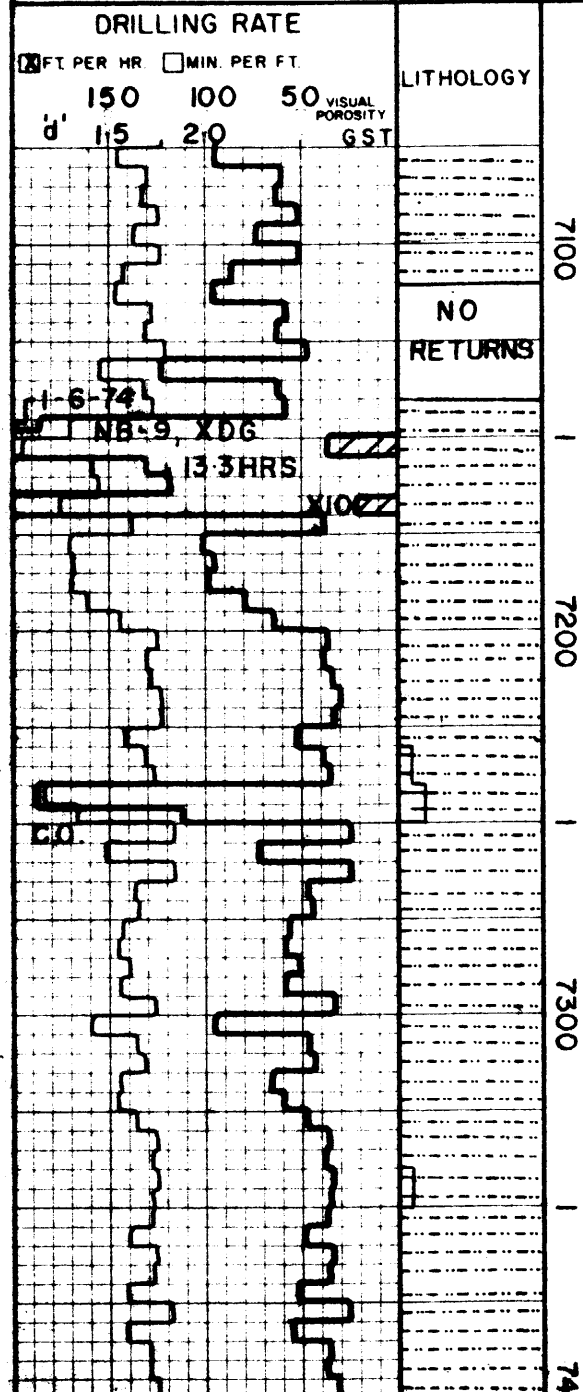
**LEGEND**  
 DEPTH CORRESPONDS TO DRILL  
 PIPE MEASUREMENTS.  
 NB NEW BIT  
 NCB NEW CORE BIT  
 DST DRILL STEM TEST  
 NR NO RETURNS  
 TG TRIP GAS  
 CO CIRCULATE OUT RETURNS

**LITHOLOGY**  
 SAND  
 GRANITE WASH  
 LIME STONE  
 CHERT  
 SHALE  
 GYP. ANHYDRITE  
 DOLOMITE  
 LIGNITE

22  
 25

**CUTTINGS ANALYSIS**

TOTAL GAS \_\_\_\_\_  
 METHANE \_\_\_\_\_  
 LIQUID HYDROCARBONS (C<sub>6+</sub>) \_\_\_\_\_ 6+ \_\_\_\_\_



SILTST: MED. GY.,  
 MED. SFT. - MED. HD.  
 CALC.

MDST: LT GY. V. SFT.,  
 CALC, ABNT. PYR.

WT 9.7  
 VIS 45  
 PH 9.4  
 F 5.0  
 CL 6900  
 NO<sub>3</sub> 150  
 TEMP 102°F

DEPT. NAT. RES & ENV  
  
 PE603502