

GEOGRAM

(Synthetic Seismogram)

Company:	SHELL AUSTRALIA
Well:	GUMMY #1
Field:	GIPSLAND BASIN
Country:	AUSTRALIA
Reference No:	58822
Date Logged:	3 JUN 80
Location:	38 17 58.87 S 148 44 21.28 E
Elevation:	KB: 28.40 DF: 28.00 GL: -155.40
Permanent Datum:	MSL
Depth Unit:	METRES
LOG INFORMATION:	
Field Recorder:	S. HEAL
Operator:	SK
Logging Date:	28.40
Seismic Reference Datum:	0.00
Scale Calibration By/Check Stock:	YES
Two-Way Time Sample Interval:	2 ms
Scale Edited By/Analyst:	YES
True Vertical Depth Corrections Applied:	
Scale of True Vertical Depth Data:	
Maximum Hole Deviation:	

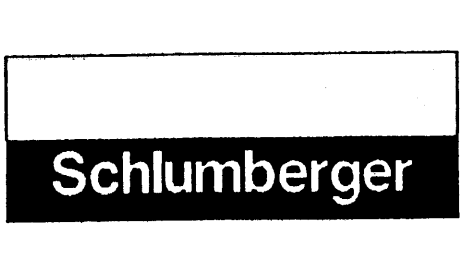
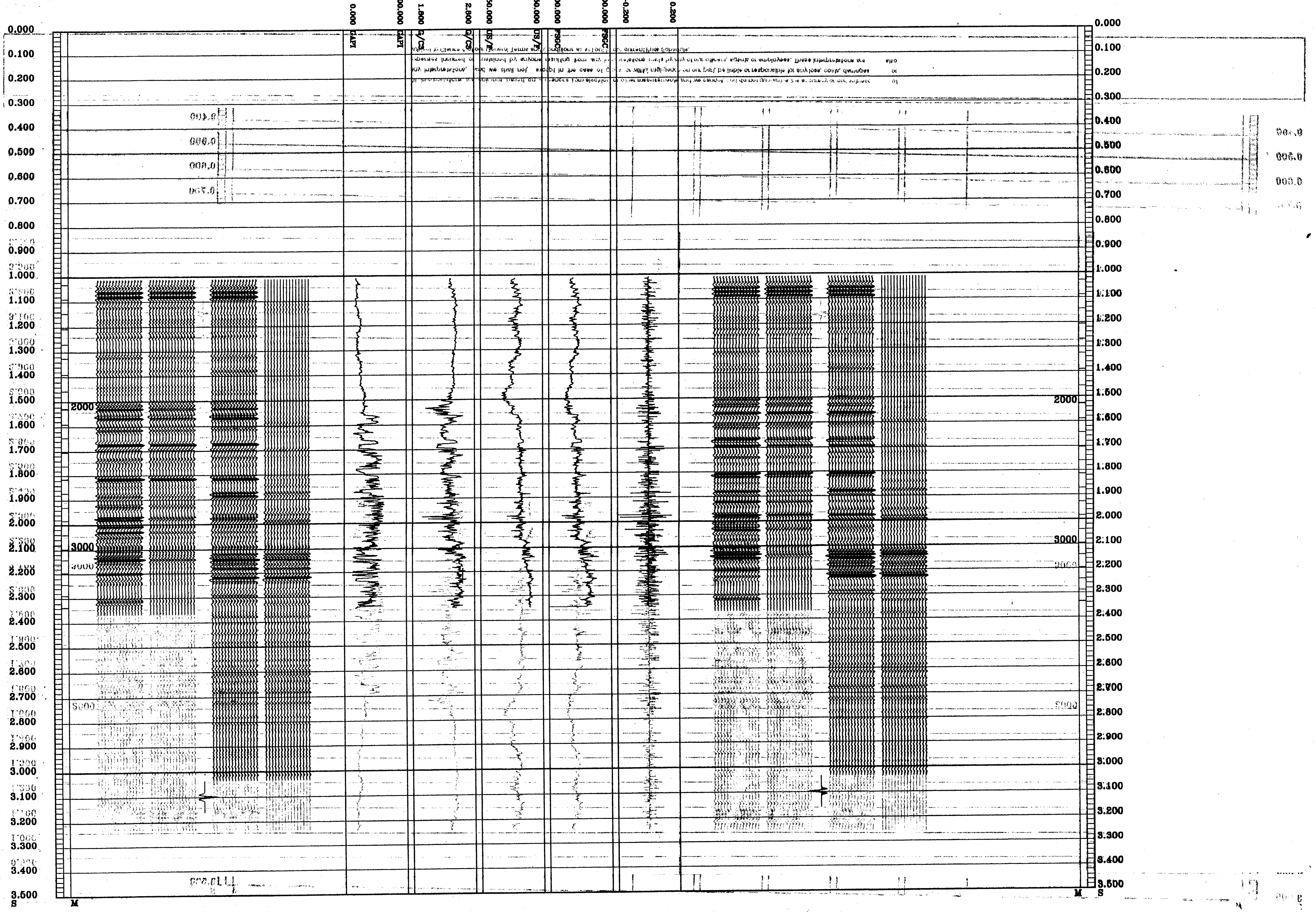
The well name, location and surface information was supplied by the customer.

All interpretations are opinions based on information from electrical or other measurements and we cannot and do not guarantee the accuracy or correctness of any interpretations, and we shall not, except in the case of gross or willful negligence on our part, be liable or responsible for any loss, costs, damages or expense incurred or sustained by anyone relying on any interpretations made by any of our officers, agents or employees. These interpretations are also subject to Clause 4 of our General Terms and Conditions as set out in our current Price Schedule.

CLIENT = SHELL AUSTRALIA
 FIELD = GIPSLAND BASIN
 WELL = GUMMY 1

GEOGRAM
45 HERTZ ZERO PHASE
RICKER WAVELET
GUMMY 1

2201 4012 1172M	PRIMARIES WITH TRANSMISSION LOSS REVERSE POLARITY
3331	PRIMARIES AND MULTIPLES REVERSE POLARITY
	MULTIPLES ONLY FROM REVERSE POLARITY
	PRIMARIES WITH TRANSMISSION LOSS REVERSE POLARITY
	PRIMARIES AND MULTIPLES REVERSE POLARITY
	MULTIPLES ONLY FROM REVERSE POLARITY
	PRIMARIES AND MULTIPLES NORMAL POLARITY
	MULTIPLES ONLY FROM NORMAL POLARITY
	PRIMARIES WITH TRANSMISSION LOSS NORMAL POLARITY
	PRIMARIES AND MULTIPLES NORMAL POLARITY
	MULTIPLES ONLY FROM NORMAL POLARITY



CLIENT COMPANY: SHELL AUSTRALIA
 FIELD: GIPSLAND BASIN
 WELL NAME: GUMMY #1
 COUNTRY: AUSTRALIA