

FORMATION TEST DATA ATTACHMENT 1 to WCR GOLDEN BEACH - 1A

FORMATION TEST DATA

Attachment 1 to WCR

GOLDEN BEACH-1A

GOLDEN BEACH-1A

Formation Test Data **(Attachment 1 to WCR)**

TABLE OF CONTENTS

- Section 1.0 Pressure Chart Computations recorded in Schlumberger Formation Tester.
- Section 2.0 Period Flowing Survey
- Section 3.0 Daily Drilling Reports

SECTION 1

Pressure Chart Computations recorded in Schlumberger Formation Tester

R. D. AGNEW PTY. LTD.
P. O. Box 384
DALBY, QUEENSLAND

PHONE 23724
22495

JULY 21, 1967

TO: BURMAH OIL COMPANY OF AUSTRALIA, LTD.

THE FOLLOWING AMERADA PRESSURE CHART COMPUTATIONS RECORDED IN SCHLUMBERGER
FORMATION TESTER ON YOUR GOLDEN BEACH A-1:

TEST No. 1 @ 8973'. 10,250 PSIG GAUGE SERIAL No. 3972-N.

<u>TIME MINUTES</u>	<u>PRESSURE</u>	<u>FUNCTION</u>
0	—	FLOW LINE OPENED
2	28	"
4	48	"
6	64	"
8	80	"
10	88	"
12	92	"
14	96	"
16	100	"
18	100	"
20	100	"
22	100	"
23	3051	SAMPLE SEALED
24	3426	"
25	3585	"
26	3675	"
27	3748	"
28	3800	"
29	3840	"
30	3875	"
31	3901	"
32	3935	"
33	3950	"
34	3975	"
35	3990	"
36	4005	TOOL COLLAPSED
	4880	HYDROSTATIC

BY: ROBERT D. AGNEW

R. D. AGNEW PTY. LTD.
P. O. Box 384
DALBY, QUEENSLAND

PHONE 2-3724
2-2495

JULY 21, 1967

TO: BURMAH OIL COMPANY OF AUSTRALIA, LTD.

THE FOLLOWING AMERADA PRESSURE CHART COMPUTATIONS RECORDED IN SCHLUMBERGER
FORMATION TESTER ON YOUR GOLDEN BEACH A-1:

TEST No. 2 @ 9105'

10,250 PSIG GAUGE SERIAL No. 3972-N

<u>TIME MINUTES</u>	<u>PRESSURE</u>	<u>FUNCTION</u>
0	36	FLOW LINE OPENED
5	36	"
10	32	"
15	32	"
20	32	"
25	36	"
30	36	"
35	36	"
39	36	SAMPLE SEALED
40	48	"
42	48	"
44	48	"
46	48	"
48	48	"
49	48	TOOL COLLAPSED
50	92	"

NOTE: COULD NOT OBTAIN DEFINITE READING OF HYDROSTATIC PRESSURE.

BY: ROBERT D. AGNEW

R. D. AGNEW PTY. LTD.
P. O. Box 384
DALBY, QUEENSLAND

PHONE 2-3724
2-2495

JULY 21, 1967

TO: BURMAH OIL COMPANY OF AUSTRALIA LTD.

THE FOLLOWING AMERADA PRESSURE CHART COMPUTATIONS RECORDED IN SCHLUMBERGER
FORMATION TESTER ON YOUR GOLDEN BEACH A-1:

TEST No. 3 @ 8837'

10,250 PSI GUAGE SERIAL No. 3972-N

<u>TIME MINUTES</u>	<u>PRESSURE</u>	<u>FUNCTION</u>
0	381	FLOW LINE OPEN
1	176	"
2	164	"
3	152	"
4	140	"
5	140	"
10	132	"
15	132	"
20	132	"
25	132	"
30	132	"
35	132	"
39	132	SAMPLE SEALED
40	3721	"
41	3763	"
42	3785	"
43	3805	"
44	3820	"
45	3825	"
46	3835	"
47	3840	"
48	3845	TOOL COLLAPSED
	4778	HYDROSTATIC

BY: ROBERT D. AGNEW

R. D. AGNEW PTY. LTD.
P. O. Box 384
DALBY, QUEENSLAND

PHONE 2-3724
2-2495

JULY 21, 1967

TO: BURMAH OIL COMPANY OF AUSTRALIA LTD.

THE FOLLOWING AMERADA PRESSURE CHART COMPUTATIONS RECORDED IN SCHLUMBERGER
FORMATION TESTER ON YOUR GOLDEN BEACH A-1:

TEST No. 4 @ 8645'

10,250 PSI GAUGE SERIAL NO. 3972-N

<u>TIME MINUTES</u>	<u>PRESSURE</u>	<u>FUNCTION</u>
0	—	FLOW LINE OPEN
1	1678	"
2	1616	"
4	1637	"
6	1611	"
10	1621	"
15	1632	"
20	1616	"
24	1616	"
25	1658	"
26	1746	"
27	2232	"
28	3318	"
29	3682	"
30	3730	"
31	3742	"
32	3747	"
33	3752	"
34	3752	"
35	3752	"
36	3752	"
37	3752	"
38	3757	"
39	3752	"
38	3757	"
39	3757	SAMPLE SEALED
40	3825	"
42	3825	"
44	3825	"
45	3825	TOOL COLLAPSED
	4675	HYDROSTATIC

BY: ROBERT D. AGNEW

GOLDEN BEACH-1A

Formation Test Data **(Attachment 1 to WCR)**

D.S.T Enclosures

There are four aluminium plates located in this folder (PE905172) at this location belonging to:

- Test No. 1 @ 8973'
- Test No. 2 @ 9105'
- Test No. 3 @ 8837'
- Test No. 4 @ 8645'

SECTION 2

Period Flowing Survey

SERVICES
 DYNAMOMETER
 PRESSURE SURVEYS
 TEMPERATURE SURVEYS
 PIANO WIRE LINE SERVICE
 SONOLOG WELL SOUNDING SERVICE

ROBERT D. AGNEW

P.O. Box 384
 DALBY, QUEENSLAND

PHONE DALBY 1022

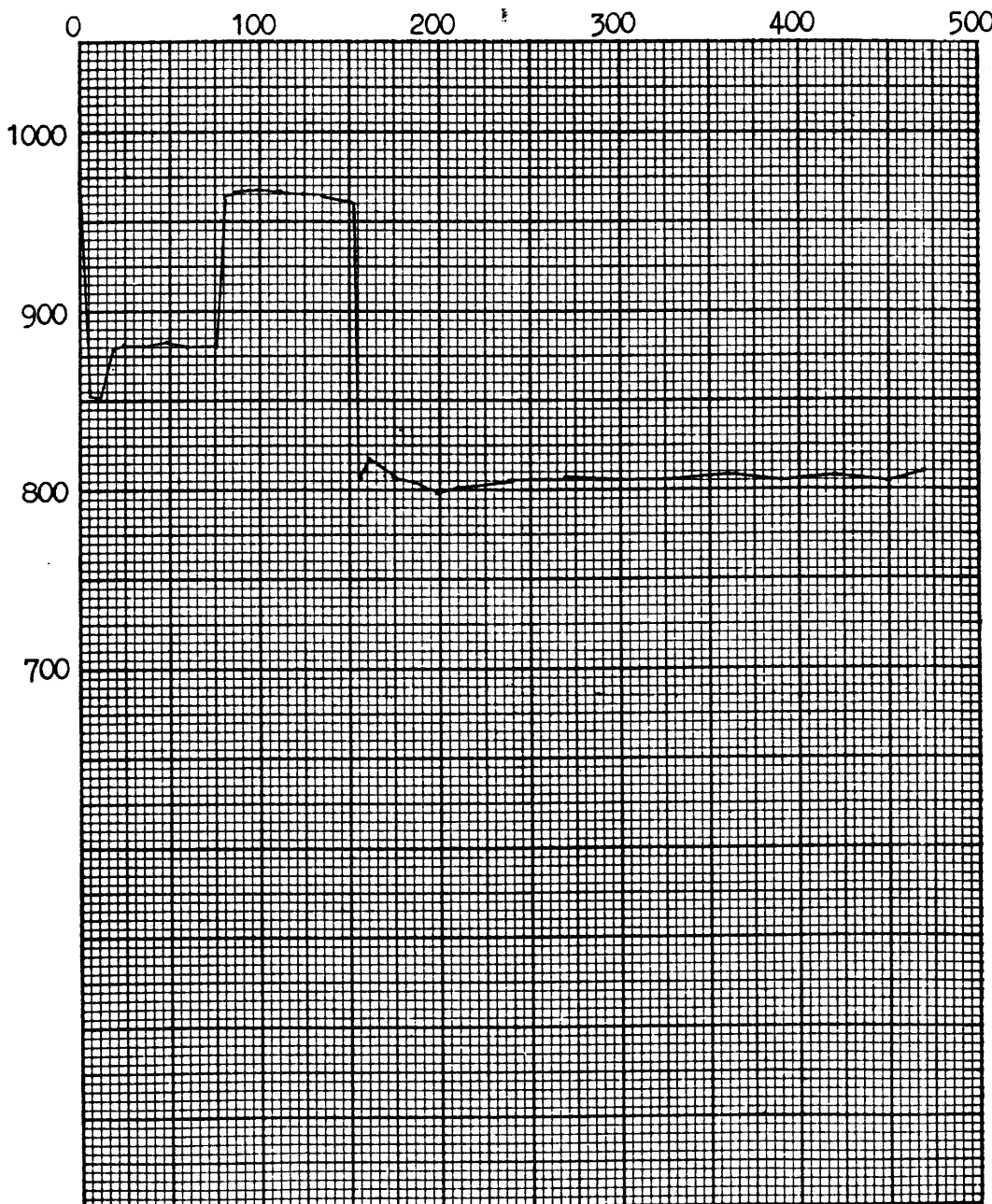
DST # 8

OWNER	BURMAH OIL COMPANY	FIELD	GIPPSLAND SHELF	WELL NAME	GOLDEN BEACH 1-A
CASING	9-5/8"	ELEV.		DATE	AUGUST 22, 1967
LINER DESCRIPTION				ZERO POINT	KELLY BUSHING
PERFORATED	2142'-2147'	DEPTH			
TUBING DETAIL	4 1/2" DRILL PIPE WITH OTIS "J" NIPPLE @ 1962'			ZONE	

PURPOSE PERIOD SURVEY - PORTION OF ISOCHRONAL FLOW TEST DST # 8
 REMARKS HUNG INSTRUMENT ON OTIS "J" MANDREL @ 1962'.
 PICK UP @ 1971' MAXIMUM TEMPERATURE 116 °F @ 1971'
 ELEMENT 3000 PSI SERIAL NO. 4903-N

STABILIZATION PERIOD
 GROSS FLUID RATE B/D
 NET OIL RATE B/D
 FORMATION GAS MCF/D
 GAS OIL RATIO CFT/BBL
 CIRCULATED GAS MCF/D
 OIL GRAVITY °API
 BEAN SIZE

MINUTES



CASING PRESSURE			
TUBING PRESSURE	930		
ON BOTTOM	6:27 PM		
PRESSURE @ 0'	926 PSI		
MIN	PRESS	MIN	PRESS
0*	964	75	960
6	856	0*	960
12	854	6	807
18	878	12	816
24	881	18	808
36	880	24	807
48	883	36	804
60	880	48	798
75	880	60	801
0**	880	90	805
6	964	120	807
12	967	150	805
18	968	180	807
24	968	210**	808
36	967	240*	805
48	965	270	808
60	964	300	804
		320	810

* ON PRODUCTION
 ** SHUT IN

SERVICES
 DYNAMOMETER
 PRESSURE SURVEYS
 TEMPERATURE SURVEYS
 PIANO WIRE LINE SERVICE
 SONOLOG WELL SOUNDING SERVICE

ROBERT D. AGNEW

P.O. Box 384
 DALBY, QUEENSLAND

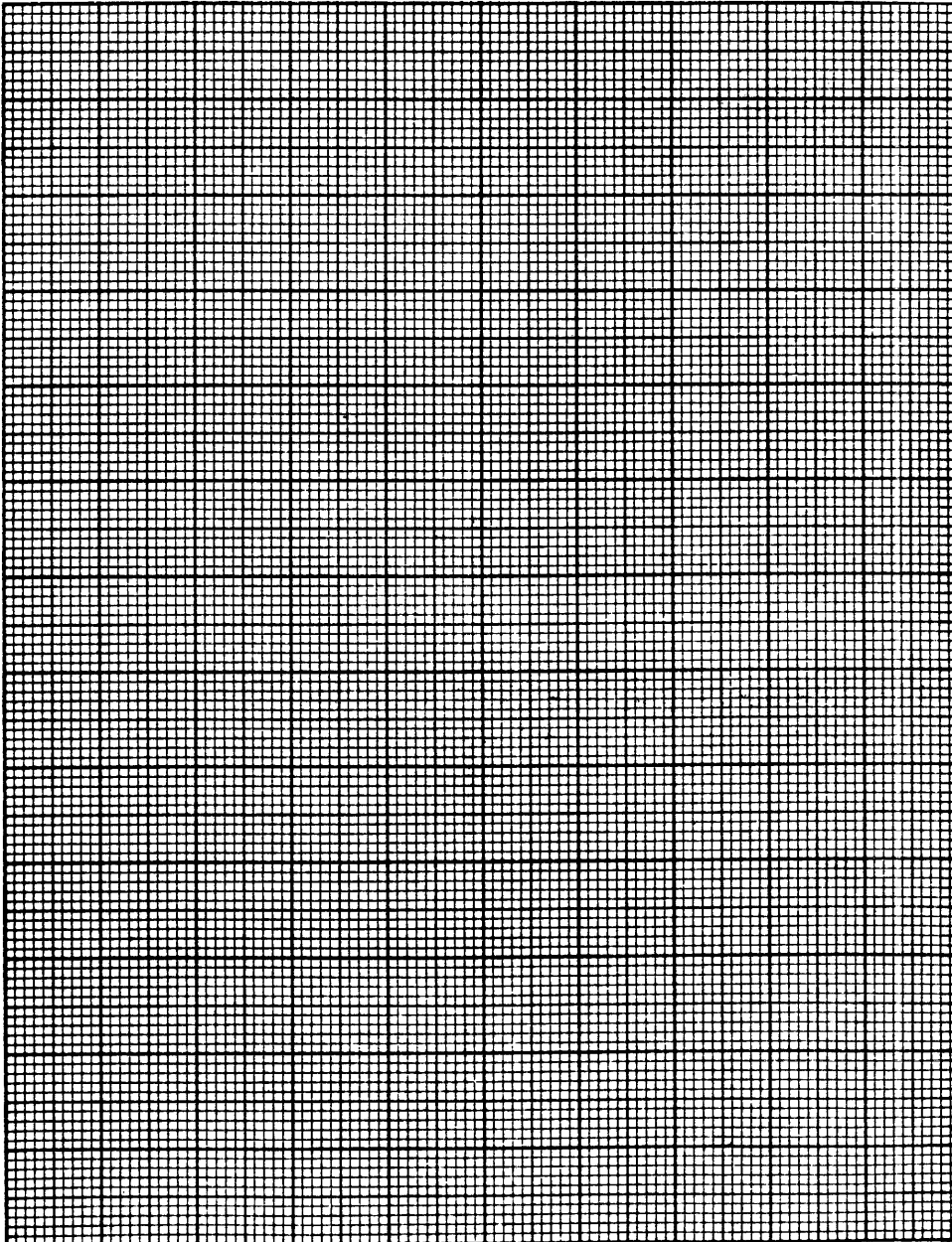
PHONE DALBY 1022

OWNER	BURMAH OIL COMPANY	FIELD	GIPPSLAND SHELF	WELL NAME	GOLDEN BEACH 1-A
CASING	7"	ELEV.		DATE	AUGUST 10-11, 1967
LINER DESCRIPTION				ZERO POINT	KELLY BUSHING
PERFORATED				DEPTH	
TUBING DETAIL	2" DRILL PIPE			ZONE	
NOTE: HALLIBURTON FT HUNG BOMB FLOWING @ 8674' ON OTIS "J" MANDREL. HIT ? @ 4200' GOING IN HOLE, FLUID LEVEL 5250', SEATED "J" MANDREL @ 8674', FLUID LEVEL COMING OUT @ 4750'.					
PURPOSE	PERIOD FLOWING SURVEY			STABILIZATION PERIOD	
REMARKS				GROSS FLUID RATE B/D	
PICK UP @	MAXIMUM TEMPERATURE	222	°F @ 8674'	NET OIL RATE B/D	
ELEMENT	8000 PSI	SERIAL NO.	3969-N	FORMATION GAS MCF/D	
				GAS OIL RATIO CFT/BBL	
				CIRCULATED GAS MCF/D	
				OIL GRAVITY °API	
				BEAN SIZE	
				CASING PRESSURE	
				TUBING PRESSURE	

ON BOTTOM 1:05 PM AUG. 10
 OFF BOTTOM 2:00 PM AUG. 11

TIME	PRESS
1:05 PM	1788 ?
2:00 PM	2269

STYLUS DISENGAGED



BY: AGNEW

SERVICES
 DYNAMOMETER
 PRESSURE SURVEYS
 TEMPERATURE SURVEYS
 PIANO WIRE LINE SERVICE
 SONOLOG WELL SOUNDING SERVICE

ROBERT D. AGNEW

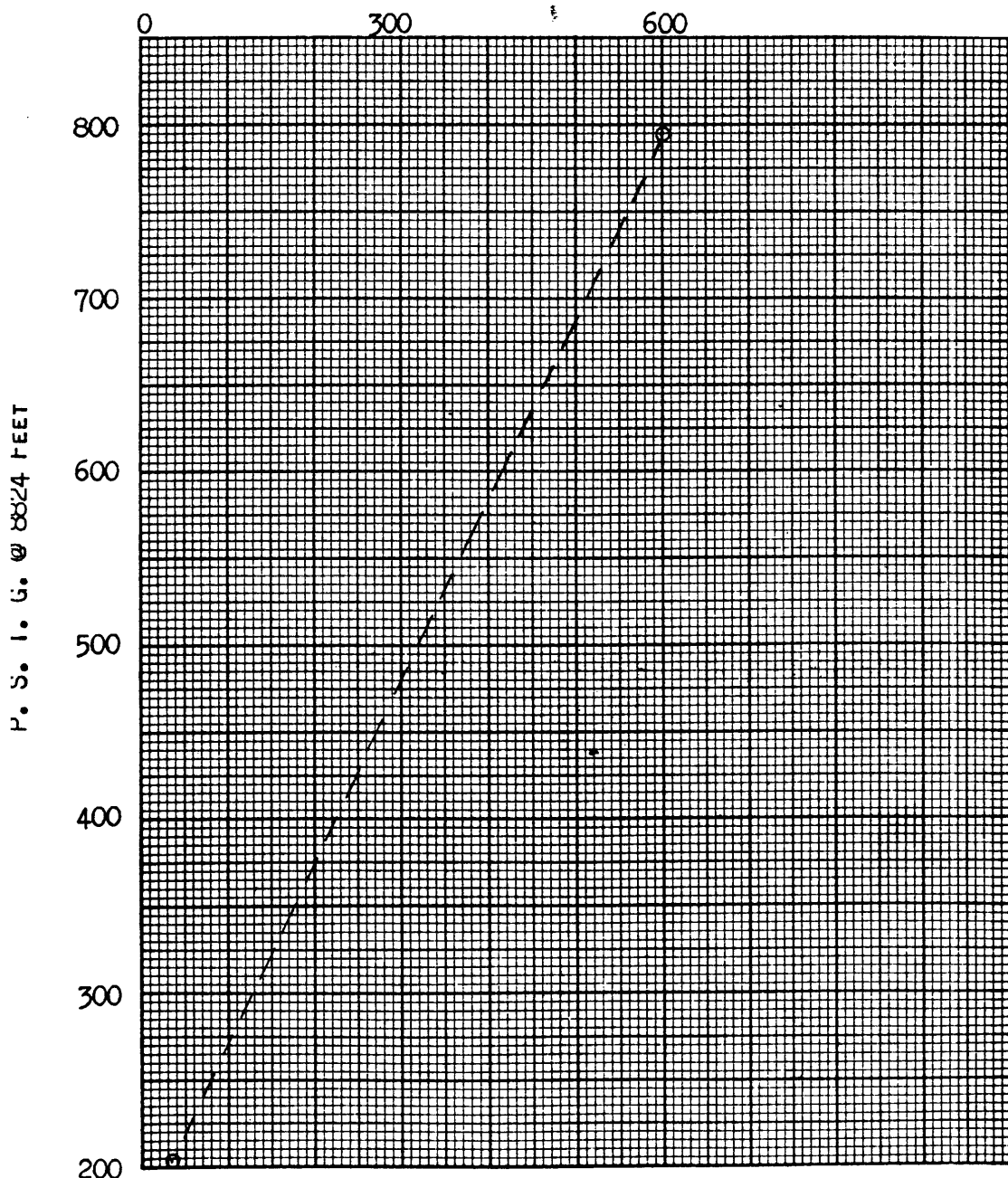
P.O. Box 384
 DALBY, QUEENSLAND

PHONE DALBY 1022

OWNER	BURMAH OIL COMPANY	FIELD	GIPPSLAND SHELF	WELL NAME	GOLDEN BEACH 1-A
CASING	7"	ELEV.		DATE	AUGUST 6, 1967
LINER DESCRIPTION				ZERO POINT	KELLY BUSHING
PERFORATED				DEPTH	
TUBING DETAIL	2" DRILL PIPE			ZONE	

PURPOSE	PERIOD FLOWING SURVEY	STABILIZATION PERIOD	
REMARKS	HUNG BOMB ON "J" MANDREL @ 8824', "J" MANDREL OPEN.	GROSS FLUID RATE B/D	
PICK UP @	8824'	NET OIL RATE B/D	
	MAXIMUM TEMPERATURE 228 °F @ 8824'	FORMATION GAS MCF/D	
ELEMENT	8000 PSI	SERIAL NO.	3969-N

TIME MINUTES



GAS OIL RATIO CFT/BBL
 CIRCULATED GAS MCF/D
 OIL GRAVITY °API
 BEAN SIZE
 CASING PRESSURE
 TUBING PRESSURE

TIME	PRESS.
0 MIN	0
32 MIN	204
600 MIN	795

NOTE: ON BOTTOM 32 MINS. AFTER TESTER OPENED ON FINAL FLOW.

HIT OBSTRUCTION @ 3800' RUNNING IN TOOLS WHICH DISENGAGED STYLUS - ONLY PARTIAL READINGS RECORDED.

INSTRUMENT PULLED WITH HALLIBURTON FORMATION TESTER

BY: AGNEW

SERVICES
 DYNAMOMETER
 PRESSURE SURVEYS
 TEMPERATURE SURVEYS
 PIANO WIRE LINE SERVICE
 SONOLOG WELL SOUNDING SERVICE

ROBERT D. AGNEW

P.O. Box 384
 DALBY, QUEENSLAND

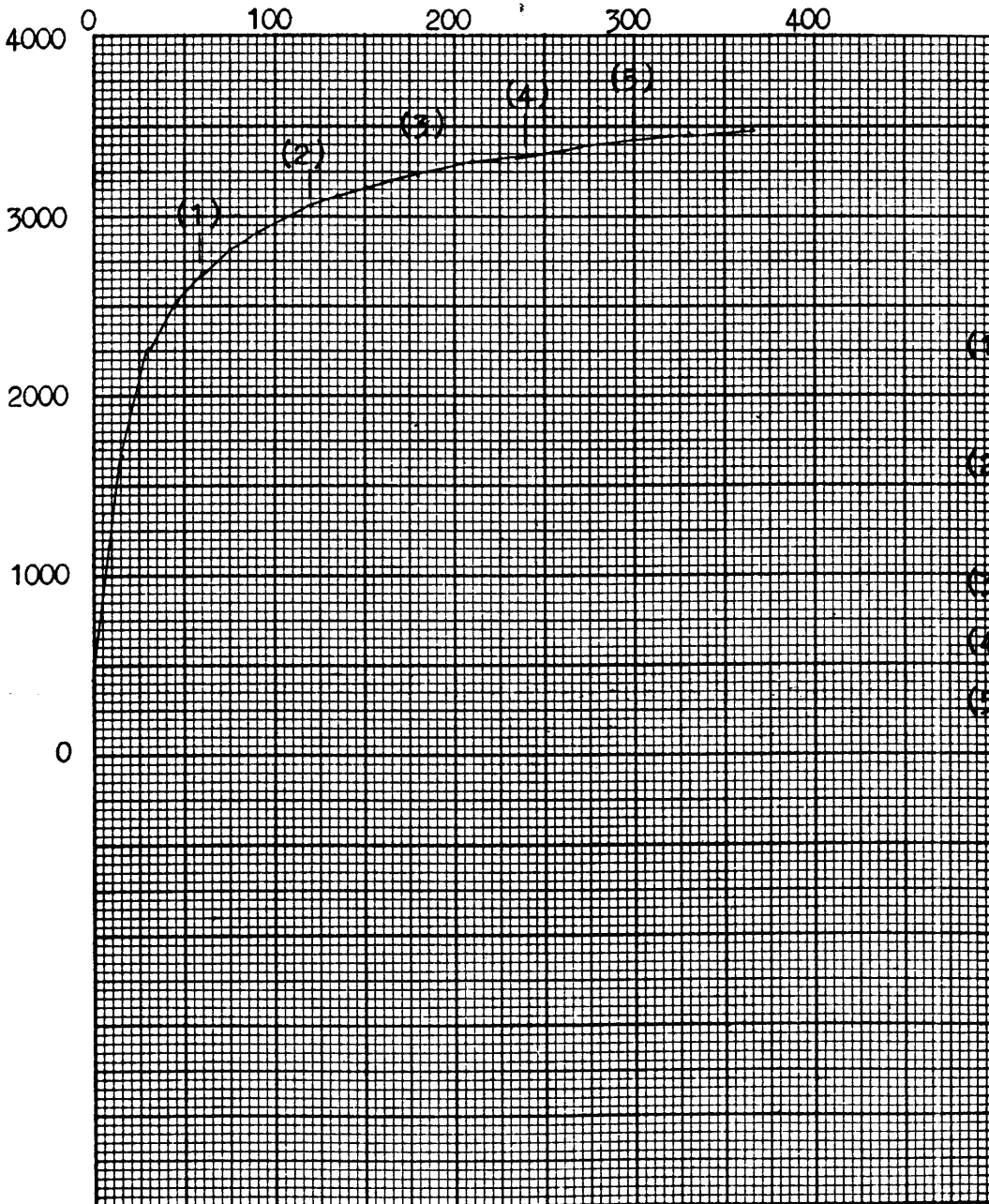
PHONE DALBY 1022

OWNER	BURMAH OIL COMPANY	FIELD	GIPPSLAND SHELF	WELL NAME	GOLDEN BEACH 1-A
CASING	7"	ELEV.		DATE	AUGUST 5, 1967
LINER DESCRIPTION				ZERO POINT	KELLY BUSHING
PERFORATED				DEPTH	
TUBING DETAIL	2" DRILL PIPE			ZONE	

PURPOSE **BLANK DRILL PIPE & PRESSURE BUILD-UP**
 REMARKS **HUNG BOMB IN OTIS "J" MANDREL @ 8832'.**
 PICK UP @ 8832' MAXIMUM TEMPERATURE 228 °F @ 8832'
 ELEMENT 8000 PSI SERIAL NO. 3969-N

STABILIZATION PERIOD
 GROSS FLUID RATE B/D
 NET OIL RATE B/D
 FORMATION GAS MCF/D
 GAS OIL RATIO CFT/BBL
 CIRCULATED GAS MCF/D
 OIL GRAVITY °API
 BEAN SIZE
 CASING PRESSURE
 TUBING PRESSURE

MINUTES



ON BOTTOM	8:50 AM
OFF BOTTOM	3:00 PM
TIME	PRESS
0 MIN	413 FLOW
15 MIN	1668 SHUT IN
30 MIN	2251
45 MIN	2510
60 MIN	2684
75 MIN	2814
90 MIN	2907
105 MIN	2992
120 MIN	3061
135 MIN	3113
150 MIN	3162
165 MIN	3194
180 MIN	3226
210 MIN	3307
240 MIN	3348
270 MIN	3392
300 MIN	3433
330 MIN	3465
360 MIN	3482
365 MIN	3486

5 SWAB RUNS

BY: AGNEW

ROBERT D. AGNEW

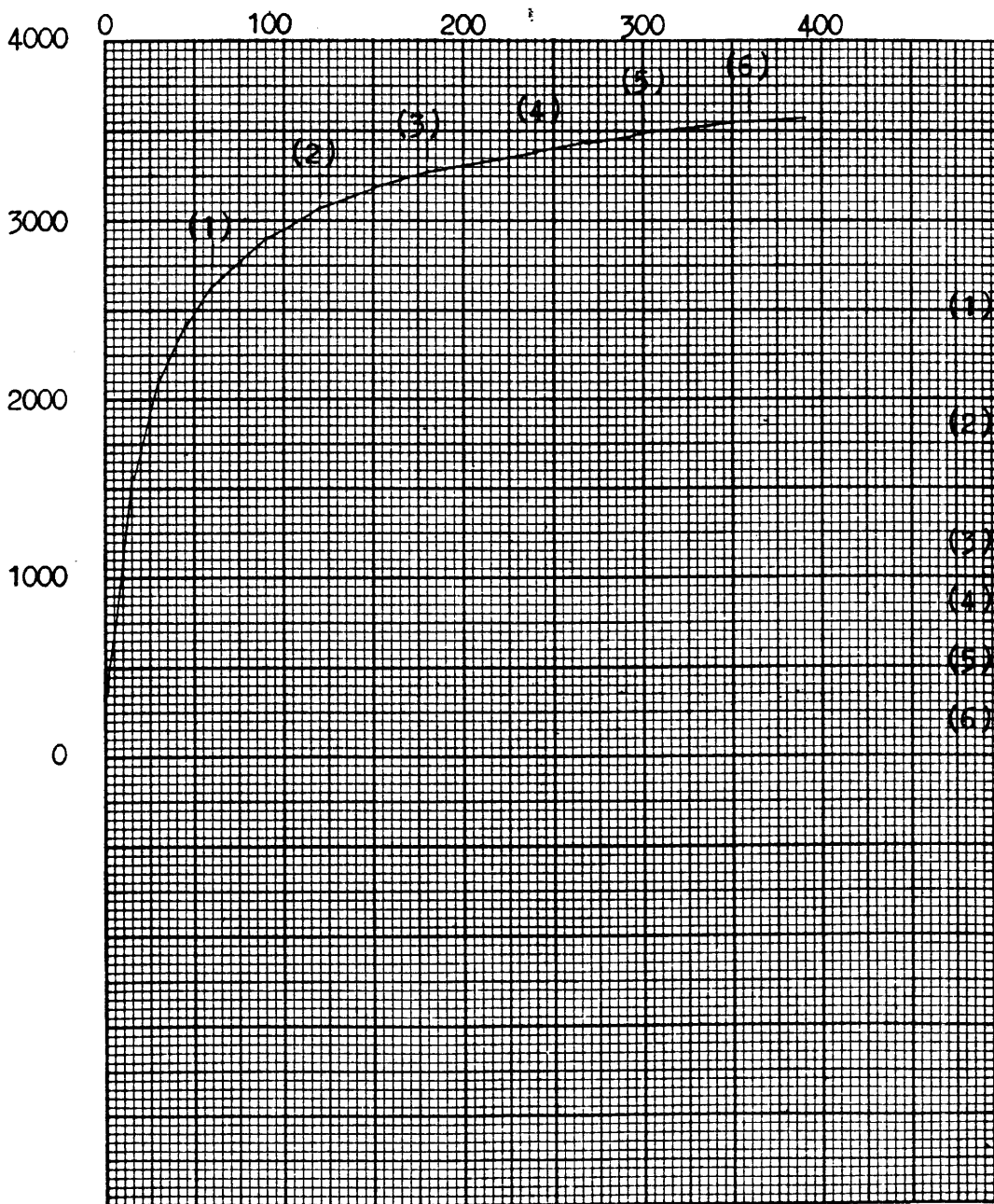
P.O. Box 384
 DALBY, QUEENSLAND

PHONE DALBY 1022

OWNER	BURMAH OIL COMPANY	FIELD	GIPPSLAND SHELF	WELL NAME	GOLDEN BEACH 1-A
CASING	7"	ELEV.		DATE	AUGUST 3, 1967
LINER DESCRIPTION				ZERO POINT	KELLY BUSHING
PERFORATED				DEPTH	
TUBING DETAIL	2" DRILL PIPE			ZONE	

PURPOSE	BLANK DRILL PIPE & PRESSURE BUILD-UP			STABILIZATION PERIOD	
REMARKS	HUNG INSTRUMENT @ 8995'			GROSS FLUID RATE B/D	
PICK UP @	8995'	MAXIMUM TEMPERATURE	230 °F @ 8995'	NET OIL RATE B/D	
ELEMENT	8000 PSI	SERIAL NO.	3969-N	FORMATION GAS MCF/D	

MINUTES



STABILIZATION PERIOD	
GROSS FLUID RATE B/D	
NET OIL RATE B/D	
FORMATION GAS MCF/D	
GAS OIL RATIO CFT/BBL	
CIRCULATED GAS MCF/D	
OIL GRAVITY °API	
BEAN SIZE	
CASING PRESSURE	
TUBING PRESSURE	

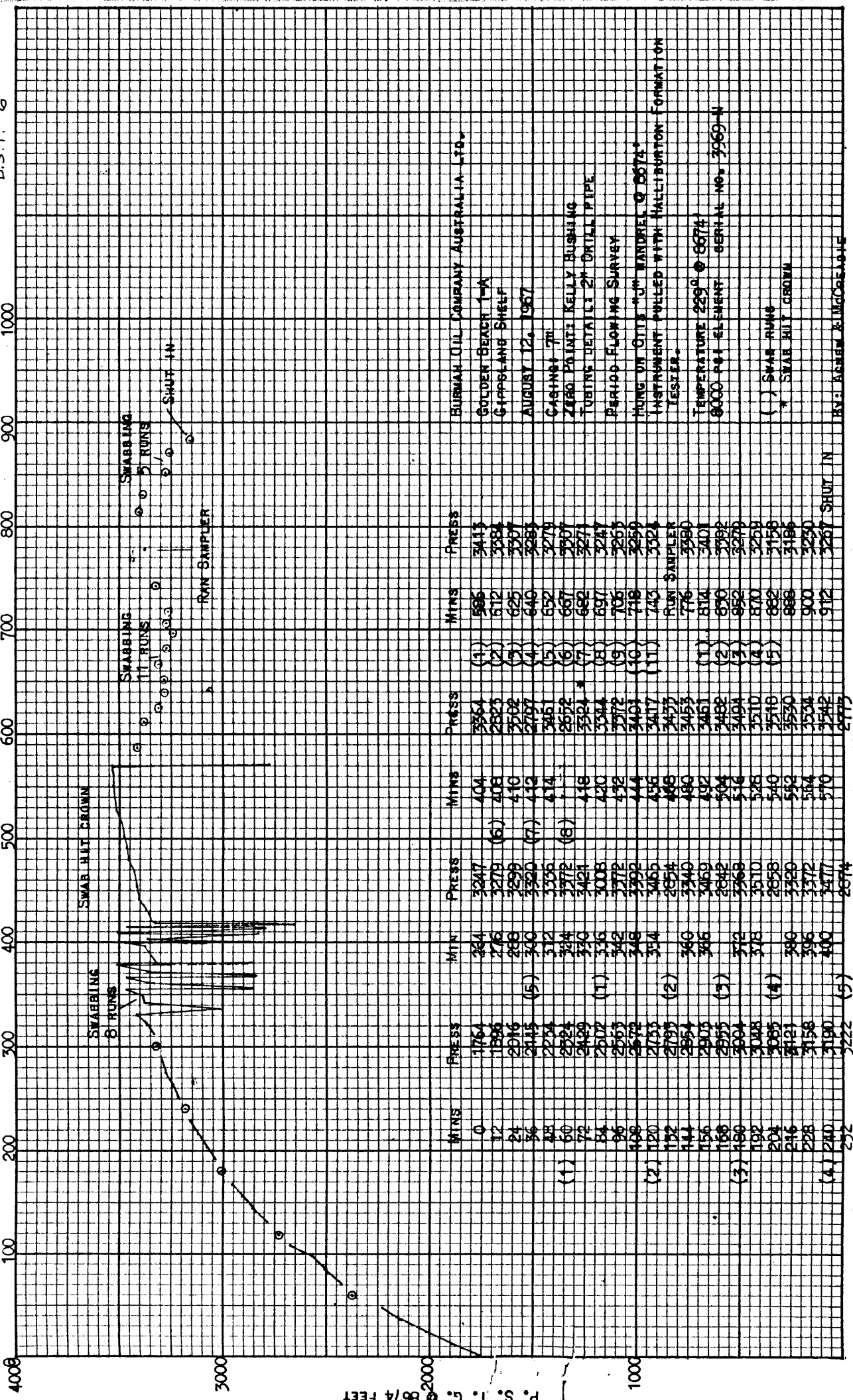
ON BOTTOM 10:30 AM

TIME	PRESS
0 MIN	361
15 MIN	1572
30 MIN	2121
45 MIN	2429
60 MIN	2644
75 MIN	2781
90 MIN	2907
105 MIN	2992
120 MIN	3069
135 MIN	3129
150 MIN	3186
165 MIN	3230
180 MIN	3271
210 MIN	3336
240 MIN	3392
270 MIN	3441
300 MIN	3493
330 MIN	3514
360 MIN	3550
390 MIN	3567

6 SWAB RUNS

BY: AGNEW

MINUTES



P. S. I. C. © 8674 FEET

BURMAH OIL COMPANY AUSTRALIA LTD.
 GOLDEN BEACH 1-A
 GIPPSLAND SHELF
 AUGUST 12, 1967
 CASHING 7M
 ZERO POINT: KELLY BUSHING
 TUBING DETAIL 2" DRILL PIPE
 PERIOD FLOWING SURVEY
 HUNG ON OTIS "C" WARDEN © 8674*
 INSTRUMENT PULLED WITH HALLIBURTON FORMATION
 LESTER.
 TEMPERATURE 229° @ 6674'
 8000 PSI ELEMENT SERIAL NO. 3969-N
 () SWAB RUN#
 * SWAB HIT CROWN
 RYN: ARNEW & INGORELATE

SECTION 3

Daily Drilling Reports

R. D. AGNEW PTY. LTD.
P. O. Box 384
DALBY, QUEENSLAND

PHONE 2-3724
2-2495

BURMAH OIL Co. AUSTRALIA LTD.

GIPPSLAND SHELF

GOLDEN BEACH 1-A

PURPOSE OF SERVICE: PLUG 2" DRILL PIPE TO OBTAIN PRESSURE BUILDUP WHEN HALLIBURTON FORMATION TESTER WOULD NOT CLOSE. ALSO HANG PRESSURE RECORDER BELOW PLUG TO MEASURE PRESSURE BUILD-UP.

WELL DATA: 2" DRILL PIPE WITH 2" OTIS "J" NIPPLE @ 8995' WITH HALLIBURTON RTTS PACKER AND TEST TOOLS BELOW.

TOOLS USED: 1-1/2" WIRELINE STRING WITH HYDRAULIC JARS, 2" "J" RUNNING TOOL, 2" OTIS "J" MANDREL WITH BLIND CHOKE, BOMB HANGER AND KUSTER KPG 8000 PSI PRESSURE RECORDER WITH 12 HOUR CLOCK.

TIME	NOTES
5:00 AM	RIG UP WIRELINE TOOLS.
9:22 AM	ENGAGE STYLUS ON PRESSURE RECORDER.
10:30 AM	SEATED "J" MANDREL IN NIPPLE @ 8995' BLANKING DRILL PIPE AND HANGING PRESSURE RECORDER.
11:00 AM	OUT OF HOLE - LAY DOWN WIRELINE LUBRICATOR.
2:00 PM	SECURE WIRELINE EQUIPMENT.
9:00 PM	COMING OUT OF HOLE WITH FORMATION TESTER. RETRIEVE "J" MANDREL AND PRESSURE RECORDER FROM NIPPLE IN DRILL COLLAR.
12:00 PM	READ PRESSURE CHARTS.

BY: R. D. AGNEW

DATE: AUGUST 3, 1967

R. D. AGNEW PTY. LTD.
P. O. Box 384
DALBY, QUEENSLAND

PHONE 2-3724
2-2495

BURMAH OIL Co. AUSTRALIA LTD.

GIPPSLAND SHELF

GOLDEN BEACH 1-A

PRUPOSE OF SERVICE: TO PLUG 2" DRILL PIPE TO OBTAIN PRESSURE BUILD-UP
WHEN HALLIBURTON TESTER MALFUNCTIONED.

WELL DATA:

TOOLS USED:

TIME	NOTES
2:30 PM	RIGGED UP WIRELINE TOOLS TO RUN OTIS "J" MANDREL WITH BLIND CHOKE AND PRESSURE RECORDER. HALLIBURTON TESTER WOULD NOT OPEN FOR FINAL FLOW TEST NO GOOD - TESTER TO BE PULLED.
4:00 PM	RIGGED DOWN AND SECURED EQUIPMENT.

BY: R. D. AGNEW

DATE: AUGUST 4, 1967

R. D. AGNEW PTY. LTD.
P. O. Box 384
DALBY, QUEENSLAND

PHONE 2-3724
2-2495

BURMAH OIL CO. AUSTRALIA LTD. GIPPSLAND SHELF GOLDEN BEACH 1-A

PURPOSE OF SERVICE: PLUG 2" DRILL PIPE TO OBTAIN PRESSURE BUILD-UP WHEN HALLIBURTON TESTER WOULD NOT CLOSE. ALSO HANG PRESSURE RECORDER BELOW PLUG TO RECORD PRESSURE BUILD-UP.

WELL DATA: 2" DRILL PIPE WITH 2" OTIS "J" NIPPLE @ 8832' WITH HALLIBURTON RTTS PACKER AND TEST TOOLS BELOW.

TOOLS USED: 1-1/2" WIRELINE STRING WITH HYDRAULIC JARS, 2" "J" RUNNING TOOL, 2" "J" MANDREL WITH BLIND CHOKE, BOMB HANGER AND KUSTER KPG 8000 PSI PRESSURE RECORDER WITH 12 HOUR CLOCK.

TIME	NOTES
7:30 AM	RIG UP WIRELINE TOOLS AND PRESSURE RECORDER.
8:05 AM	ENGAGE STYLUS ON PRESSURE RECORDER.
8:56 AM	SEATED "J" MANDREL IN NIPPLE @ 8832' BLANKING DRILL PIPE AND HANGING PRESSURE RECORDER.
9:30 AM	OUT OF HOLE WITH RUNNING TOOLS.
10:00 AM	RIGGED DOWN AND SECURED WIRELINE EQUIPMENT.
8:30 PM	COMING OUT OF HOLE WITH DRILL PIPE AND FROMATION TESTER. RETRIEVE OTIS "J" MANDREL AND PRESSURE RECORDER FROM NIPPLE IN DRILL COLLARS.
9:30 PM TO 12:00 PM	READ CHARTS.

BY: R. D. AGNEW

DATE: AUGUST 5, 1967

R. D. AGNEW PTY. LTD.
P. O. Box 384
DALBY, QUEENSLAND

PHONE 2-3724
2-2495

BURMAH OIL CO. AUSTRALIA LTD.

GIPPSLAND SHELF

GOLDEN BEACH 1-A

PURPOSE OF SERVICE: HANG PRESSURE RECORDER IN NIPPLE DURING FORMATION TEST.

WELL DATA: 2" DRILL PIPE WITH 2" OTIS "J" NIPPLE @ 8824' WITH HALLIBURTON RTTS PACKER AND TEST TOOLS BELOW.

TOOLS USED: 1-1/2" WIRELINE STRING WITH HYDRAULIC JARS, 2" "J" RUNNING TOOL, 2" OTIS "J" MANDREL WITH NO CHOKE, BOMB HANGER AND KUSTER RPG 8000 PSI PRESSURE RECORDER WITH 36 HOUR CLOCK.

TIME	NOTES
3:30 AM	RIGGED UP WIRELINE TOOLS AND PRESSURE RECORDER.
3:42 AM	ENGAGE STYLUS ON PRESSURE RECORDER.
4:30 AM	HIT OBSTRUCTION @ 3800' GOING IN HOLE. SEATED "J" MANDREL IN NIPPLE @ 8824'.
5:00 AM	OUT OF HOLE WITH RUNNING TOOLS.
6:00 AM	RIGGED DOWN AND SECURED EQUIPMENT.
5:30 PM	UNSEATED PACKER AND STARTED OUT OF HOLE WITH DRILL PIPE.
9:30 PM	RETRIEVE OTIS MANDREL AND PRESSURE RECORDER FROM NIPPLE IN DRILL COLLARS.
12:00 PM	READ PRESSURE CHARTS.

BY: ROBERT D. AGNEW

DATE: AUGUST 6, 1967

R. D. AGNEW PTY. LTD.
P. O. Box 384
DALBY, QUEENSLAND

PHONE 2-3724
2-2495

BURMAH OIL Co. AUSTRALIA LTD.

GIPPSLAND SHELF

GOLDEN BEACH 1-A

PURPOSE OF SERVICE: HANG PRESSURE RECORDER IN OTIS NIPPLE DURING
FORMATION TEST.

WELL DATA: 2" DRILL PIPE WITH 2" OTIS "J" NIPPLE @ 8674' WITH HALLIBURTON
RTTS PACKER AND TEST TOOLS BELOW.

TOOLS USED: 1-1/2" WIRELINE STRING WITH HYDRAULIC JARS, 2" "J" RUNNING TOOL,
2" OTIS "J" MANDREL WITH NO CHOKE, BOMB HANGER AND KUSTER RPG
8000 PSI PRESSURE RECORDER WITH 36 HOUR CLOCK.

TIME	NOTES
AUG. 10	
11:00 AM	RIG UP WIRELINE TOOLS AND PRESSURE RECORDER.
12:14 PM	ENGAGE STYLUS ON PRESSURE RECORDER. HIT OBSTRUCTION @ 4200' GOING IN HOLE, FLUID LEVEL 5250'.
1:05 PM	SEATED "J" MANDREL IN NIPPLE @ 8674', HUNG RECORDER.
2:00 PM	OUT OF HOLE, EQUIPMENT SECURED.
AUG. 11	
5:30 PM	RETRIEVE OTIS MANDREL AND PRESSURE RECORDER FROM NIPPLE IN DRILL COLLARS.
9:30 PM	COMPLETE READING CHARTS.

BY: R. D. AGNEW

DATE: AUGUST 10 & 11, 1967

R. D. AGNEW PTY. LTD.
P. O. Box 384
DALBY, QUEENSLAND

PHONE 2-3724
2-2495

BURMAH OIL Co. AUSTRALIA LTD.

GIPPSLAND SHELF

GOLDEN BEACH 1-A

PURPOSE OF SERVICE: OBTAIN SUBSURFACE FLUID SAMPLE.

WELL DATA: 2" DRILL PIPE.

TOOLS USED: RIG SAND LINE, 1-1/2" O.D. SAMPLE BAILER.

TIME	NOTES:
3:00 PM	RIG UP SAMPLE BAILER. OBTAIN FLUID SAMPLE @ 8674'.
4:00 PM	RIG DOWN SAMPLE BAILER.

BY: R. D. AGNEW & MCCREADIE

DATE: AUGUST 12, 1967

R. D. AGNEW PTY. LTD.
P. O. Box 384
DALBY, QUEENSLAND

PHONE 2-3724
2-2495

BURMAH OIL Co. AUSTRALIA LTD.

GIPPSLAND SHELF

GOLDEN BEACH 1-A

PURPOSE OF SERVICE: HANG PRESSURE RECORDER IN OTIS NIPPLE TO RECORD PRESSURES DURING FORMATION TEST.

WELL DATA: 2" DRILL PIPE WITH 2" OTIS "J" NIPPLE @ 8674' WITH HALLIBURTON RTTS PACKER AND TEST TOOLS BELOW.

TOOLS USED: 1-1/2" WIRELINE STRING WITH HYDRAULIC JARS, 2" "J" RUNNING TOOL, 2" OTIS "J" MANDREL WITH NO CHOKE, BOMB HANGER AND KUSTER RPG 8000 PSI PRESSURE RECORDER WITH 36 HOUR CLOCK.

TIME NOTES

AUG. 12

1:00 AM RIG UP WIRELINE TOOLS AND PRESSURE RECORDER.

1:20 AM ENGAGE STYLUS PRESSURE RECORDER.

3:05 AM FLUID LEVEL GOING IN @ 5070'.

SEAT MANDREL IN "J" NIPPLE @ 8674', HUNG RECORDER.

4:30 AM OUT OF HOLE, RIGGED DOWN, EQUIPMENT SECURED.

11:00 PM RETRIEVE MANDREL AND PRESSURE RECORDER FROM NIPPLE IN DRILL COLLARS.

AUG. 13

TO

1:30 AM READ CHARTS.

7:30 AM

TO

9:30 AM READ CHARTS.

BY: R. D. AGNEW & MCCREADIE

AUGUST 12 & 13, 1967

R. D. AGNEW PTY. LTD.
P. O. Box 384
DALBY, QUEENSLAND

PHONE 2-3724
2-2495

BURMAH OIL Co. AUSTRALIA LTD.

GIPPSLAND SHELF

GOLDEN BEACH 1-A

PURPOSE OF SERVICE: OBTAIN SUBSURFACE FLUID SAMPLE.

WELL DATA: 2" DRILL PIPE.

TOOLS USED: RIG SANDLINE, 1-1/2" O.D. SAMPLE BAILER.

TIME	NOTES
6:15 PM	RIG UP SAMPLE BAILER. STOPPED ON OBSTRUCTION IN DRILL PIPE @ APPROX. 4000' OBTAIN SAMPLE @ 4000'
7:15 PM	RIG DOWN SAMPLE BAILER.

BY: R. D. AGNEW & MCCREADIE

DATE: AUGUST 13, 1967

R. D. AGNEW PTY. LTD.
P. O. Box 384
DALBY, QUEENSLAND

PHONE 2-3724
2-2495

BURMAH OIL Co. AUSTRALIA LTD. GIPPSLAND SHELF GOLDEN BEACH 1-A

PURPOSE OF SERVICE: PUSH SWABBING DEBRIS DOWN HOLE, OBTAIN FLUID SAMPLE.

WELL DATA: 2" DRILL PIPE.

TOOLS USED: RIG SANDLINE 10" x 1-3/4" STEM, REIN JARS, 1.865" O.D. PULLING
TOOL. SAMPLE BAILER 1-1/2" O.D.

TIME	NOTES
11:45 AM	RIG UP JARS AND PULLING TOOL. RAN IN HIT DEBRIS @ APPROX. 3500'. PUSH DEBRIS TO 4600' APPROX. STOPS @ 4600'. RAN SAMPLER TO 4600'.
1:45 PM	OBTAIN SAMPLE - RIG DOWN.
6:00 PM	RAN SAMPLER TO APPROX. 8600'. OBTAINED SAMPLE.
7:00 PM	RIGGED DOWN TOOLS.

BY: AGNEW & MCCREADIE

DATE: AUGUST 14, 1967