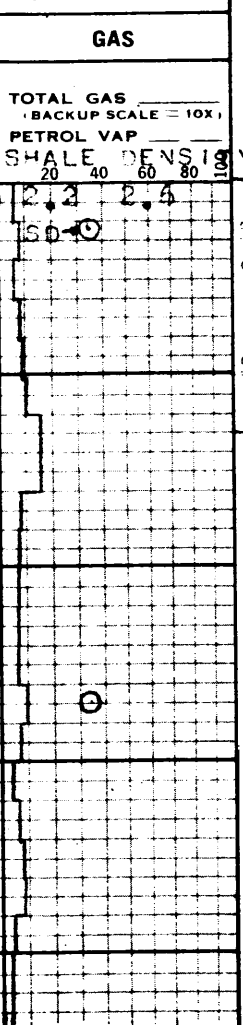
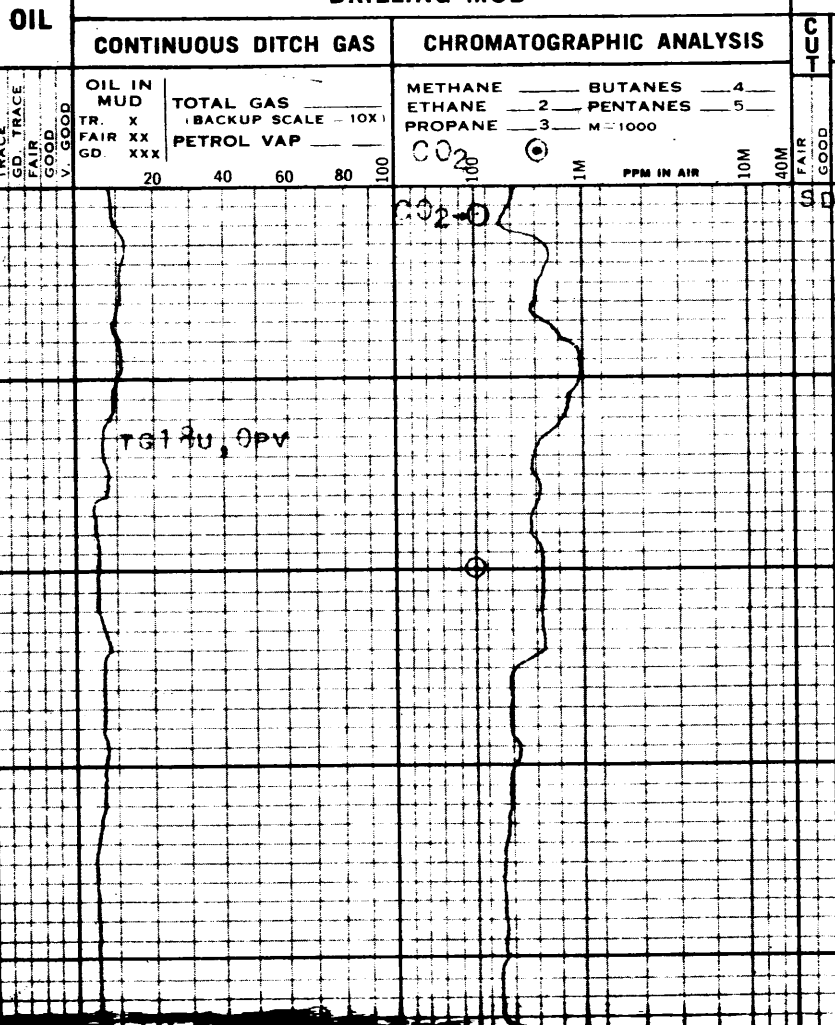
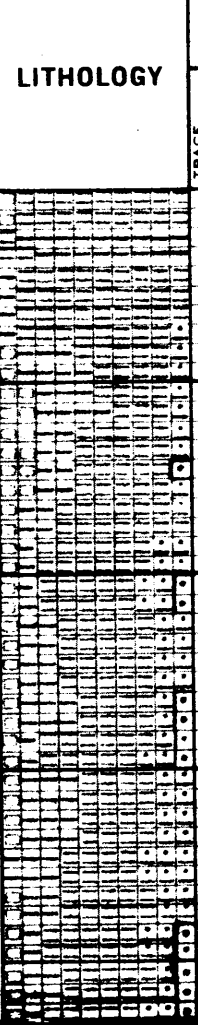
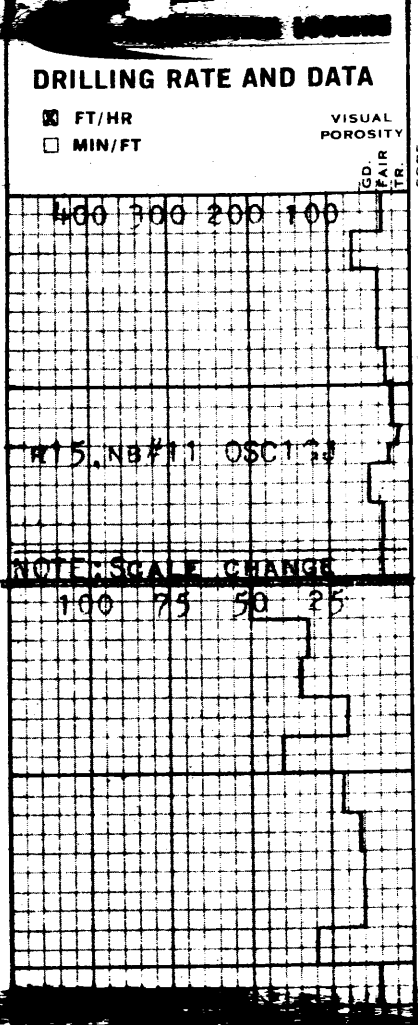


GIPPSLAND

OFFSHORE / OIL BASIN VICTORIA, AUSTRALIA

50 RHP "ELONGATE A-1"

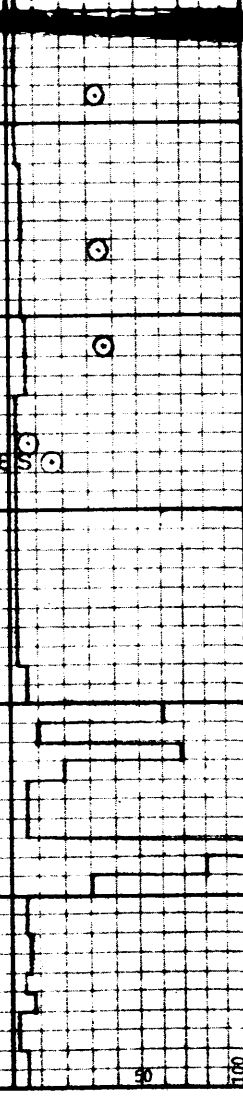
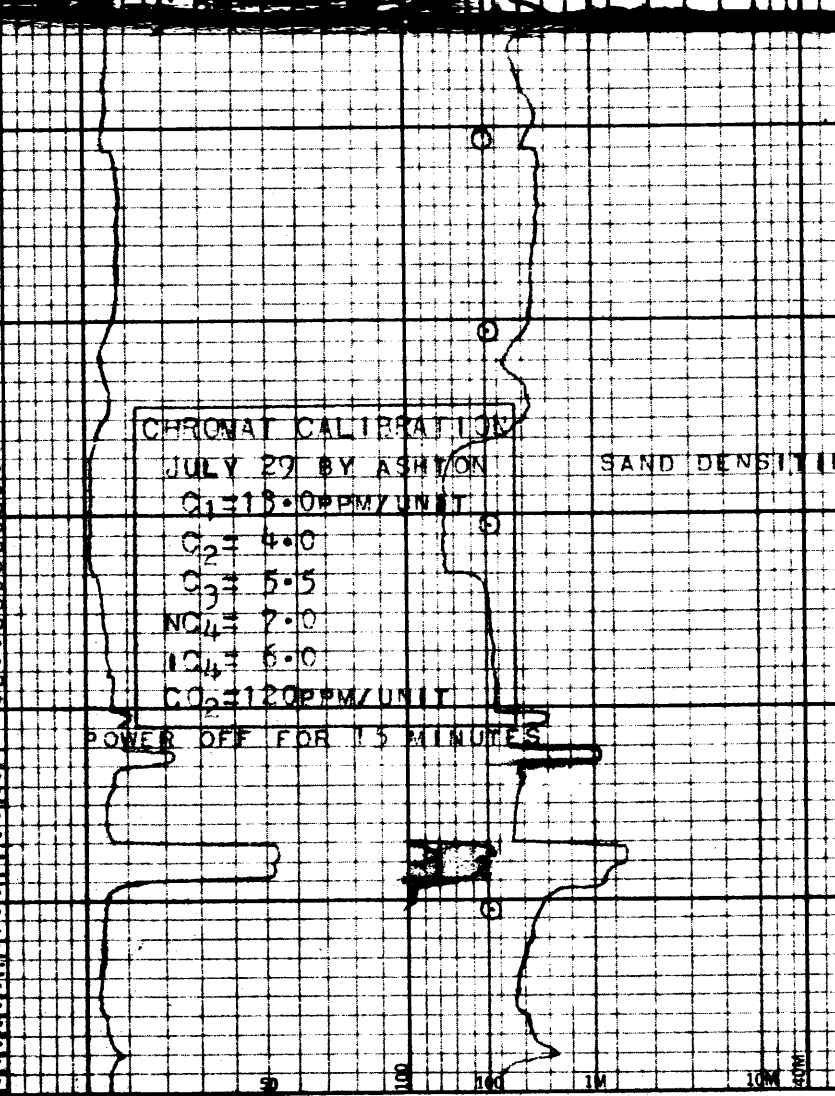
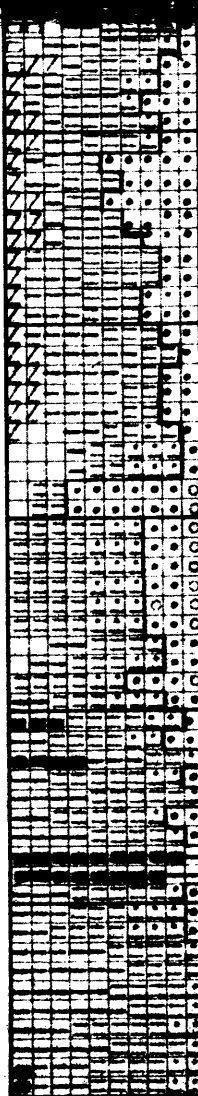
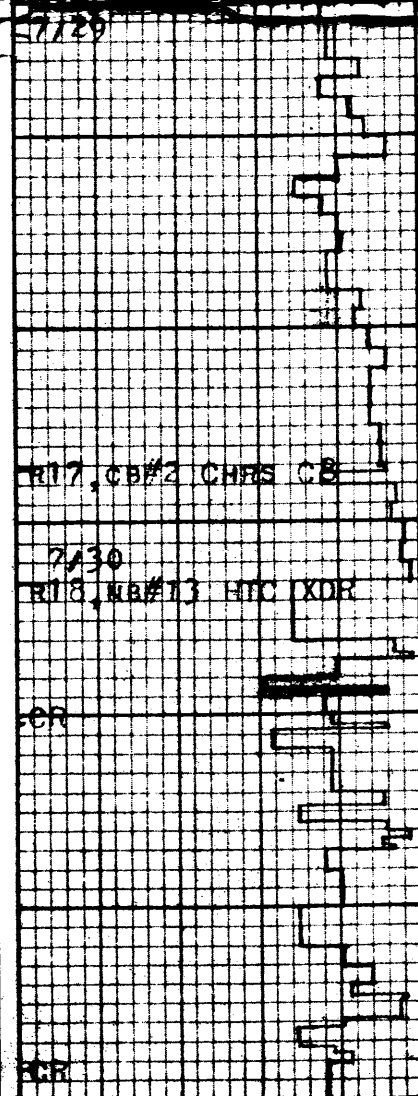


**REMARKS AND LITHOLOGY DESCRIPTION**

SHALE: LT. GRAY, PYRITIC  
SILTSTONE: AS ABOVE

INTERBEDDED SHALE,  
SILT & LIME AS ABOVE

DEPT. NAT. RES & ENV  
PE603226



INTERBEDDED SILT,  
GRAY SHALE & SANDSTONE  
DOLOMITIC, PYRITIC  
W 10.8 v 46

AS ABOVE, SS TIGHT,  
CEMENTED W/ DOLOMITE  
SH GRAY, GLAUC. FOSSIL

CORE #2 7187-7215  
CUT 28', REC. 27'

SAND & SANDY SILT:  
BROWN, PEBBLY

BECOMING SHALIER W/  
COAL BEDS

COAL: NOTE C2 & C3

SAND & SHALE: SANDY,  
BROWN, CARBONACEOUS