



DEPT. NAT. RES & ENV
PE905952

TASMANIA - SOUTH COAST

TO GABO ISLAND

INCLUDING TASMANIA

SOUNDINGS IN FATHOMS
1:1,000,000 at Lat. 27° 15'S

Soundings (under eleven in fathoms and feet)
are related to Mean Spring Low Water
and are 10 feet above Mean Higher High Water
for the Australian Coast. Positions are related to the Australian
Geodetic Datum.

Surveys to 1970. Admiralty surveys, seismic
and passage soundings to 1970.

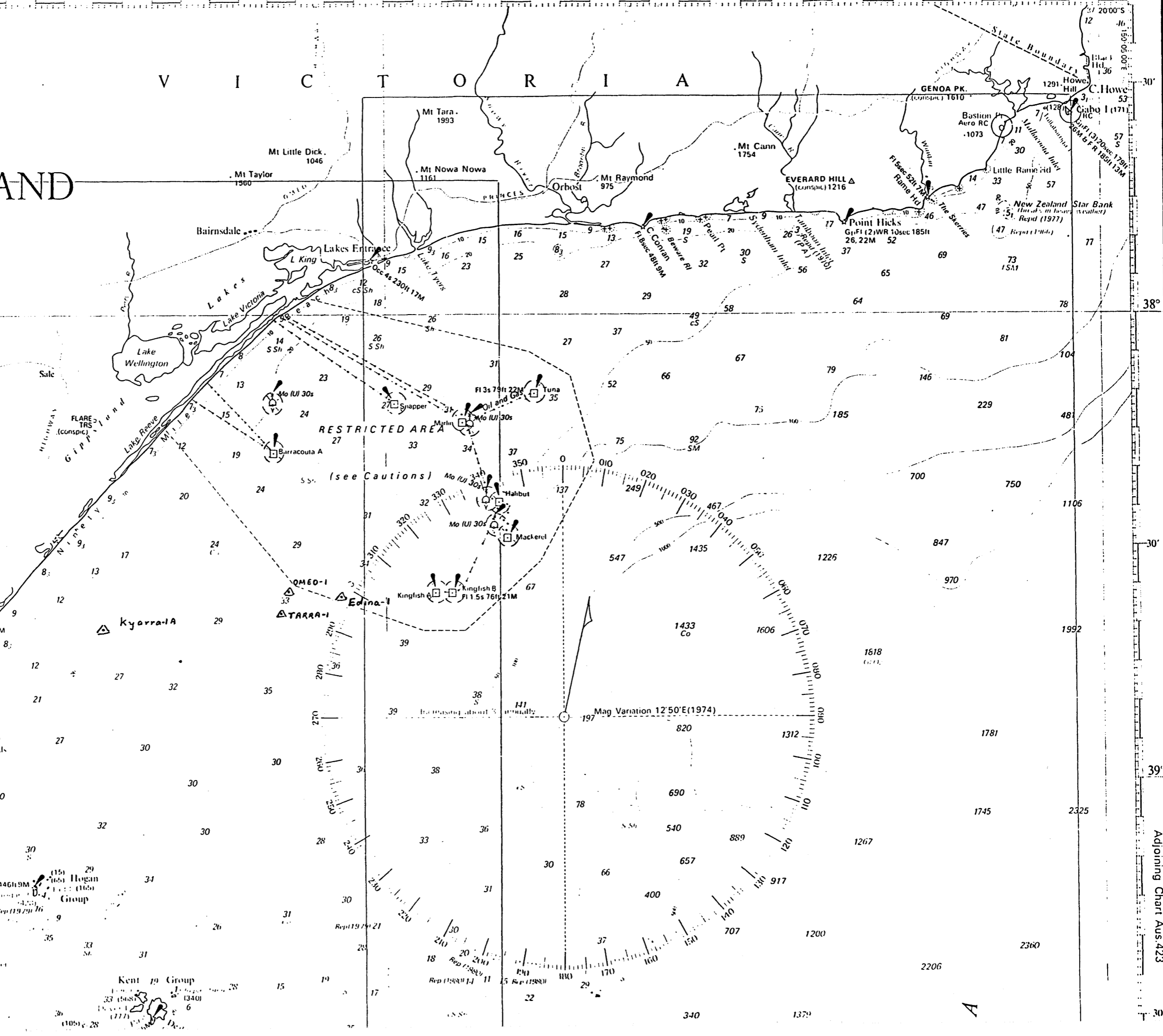
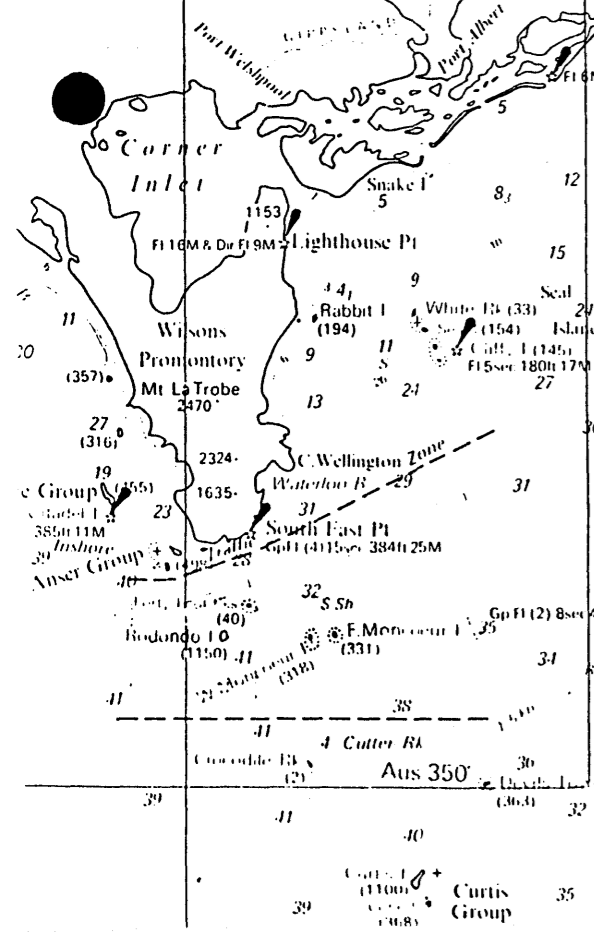
WELLHEADS

Wellhead structures temporarily abandoned wells may have
the following wellhead gear projecting up to about 26 feet (8
metres) from the sea bed.

Submerged production wells are marked by
light-buoys.

CAUTION - OMISSIONS In the areas covered
by larger scale charts these must be consulted
for buoys, lights, beacons and wrecks as on this
chart only the principal aids to navigation are
shown.

Information in the chart is related to currents.



Adjoining Chart Aus.423

A