

Schlumberger



GEOGRAM*

(Synthetic Seismogram)

* A Mark of Schlumberger

Company: ESSO AUSTRALIA LTD.
 Well: ADMIRAL-1
 Field: WILDCAT
 Country: AUSTRALIA
 Reference No: 540744 Interval: 28000 to 23100
 Date Logged: 03-12-89 Date Processed: 02-01-90
 Location: 38 09' 12.2" S 148 38' 50.7" E
 Elevations: KB: 2100 DF: 2070 GL: -10100
 Permanent Datum: MSL Depth Units: METRES

LOG INFORMATION

FIELD RECORDING Engineer: R. GIBST Location: VEA Program Version: 32.0
 COMPUTATION Analyst: K. MCPHAIL Centre: ASJ Baseline: 18.3
 ELEVATION ABOVE MEAN SEA LEVEL
 Logging Datum: 2100
 Seismic Reference Datum: 000
 Sonic Calibration By Check Shots: YES Sonic Edited By Analyst: YES
 Two-Way Time Sample Interval: 2 ms Environment: offshore

True Vertical Depth Corrections Applied:
 Source of True Vertical Depth Data:
 Maximum Hole Deviation:

Run	Date	Tool Type	Bit Size/Depth	Casing Size/Depth	Top Depth	Bottom Depth
1	26-11-88	SDT			231 M	628 M
2	03-12-89	BHC	12 1/4" @ 2182 M	13 9/8" @ 819 M	819 M	280 M
1	03-12-89	Gun Offset	40 M	40 M	5 M BELOW GL	10 M BELOW GL
		Gun Offset			80	80
		Hydro			Hydro	Hydro
		Admitt			Admitt	Admitt

GEOGRAM MODEL ASSUMPTIONS

Equal time slice model of horizontal plane layers.
 Plane acoustic waves at normal incidence.
 No intrinsic attenuation.
 POLARITY
 An upgoing wave, reflected by an increase in acoustic impedance with depth, is displayed as a white trough under normal polarity.
 SIGNATURES
 All signatures displayed in the Geogram results correspond to a wavelet convolved with a reflection coefficient of -0.5 (A decrease in acoustic impedance with depth).

REMARKS

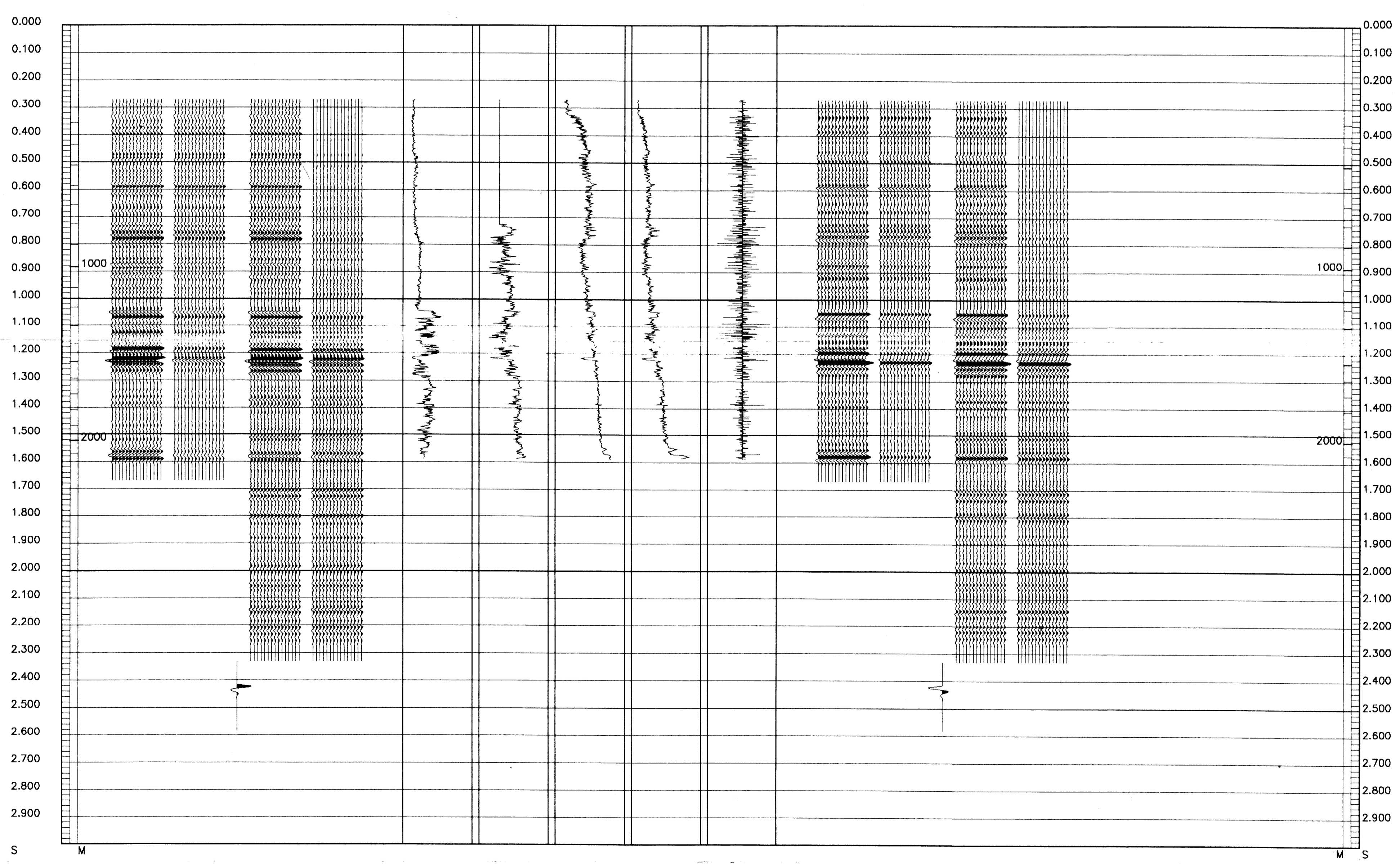
FOLD HERE

The well name, location and borehole reference data were furnished by the customer.

All interpretations are opinions based on inferences from electrical or other measurements and we cannot, and do not guarantee the accuracy or correctness of any interpretations, and we shall not, except in the case of gross or willful negligence on our part, be liable or responsible for any loss, costs, damages or expenses incurred or sustained by anyone resulting from any interpretations made by any of our officers, agents or employees. These interpretations are also subject to Clause 4 of our General Terms and Conditions as set out in our current Price Schedule.

35 HERTZ MINIMUM PHASE RICKER WAVELET

MULTIPLES ONLY REVERSE POLARITY	0.200
PRIMARIES AND MULTIPLES REVERSE POLARITY	0.200
PRIMARIES WITH TRANSMISSION LOSS REVERSE POLARITY	0.200
PRIMARIES REVERSE POLARITY	0.200
REFLECTION	0.200
ACOUSTIC IMPEDANCE	50000.000 FS/GC 100.000 US/M
SONIC	600.000 US/M 3.000 G/C3
DENSITY	1.800 G/C3 200.000 G/M3 0.000 G/M3
GAMMA RAY	
MULTIPLES ONLY NORMAL POLARITY	
PRIMARIES AND MULTIPLES NORMAL POLARITY	
PRIMARIES WITH TRANSMISSION LOSS NORMAL POLARITY	
PRIMARIES NORMAL POLARITY	



COMPANY ESSO AUSTRALIA LTD.
 FIELD WILDCAT
 WELL ADMIRAL-1
 COUNTRY AUSTRALIA

