

# SEISMIC CALIBRATION LOG

(Adjusted Continuous Velocity)

Company: ESSO AUSTRALIA LTD.

Well: ADMIRAL-1

Field: WILDCAT

Country: AUSTRALIA

Reference No: 540744 Interval: 2180.00 to 2310.00

Date Logged: 03-12-89 Date Processed: 02-01-90

Location: 38 09' 12" S 148 38' 50.7" E

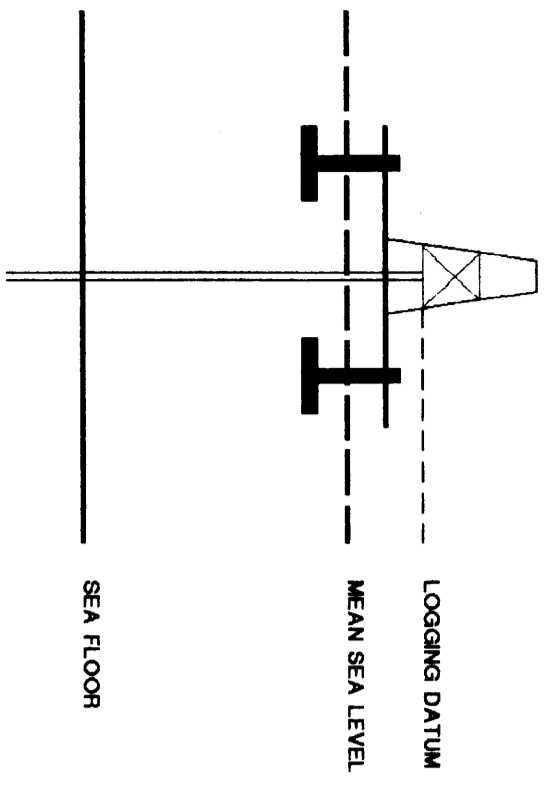
Elevations: KB: 2100 DF: 20.70 GL: -10100

Permanent Datum: MSL Depth Units: METRES

ELEVATION ABOVE MEAN SEA LEVEL

Logging Datum: 2100

Seismic Reference Datum: 0.00



Total Number of Levels: 22

Depth Reference: SRD

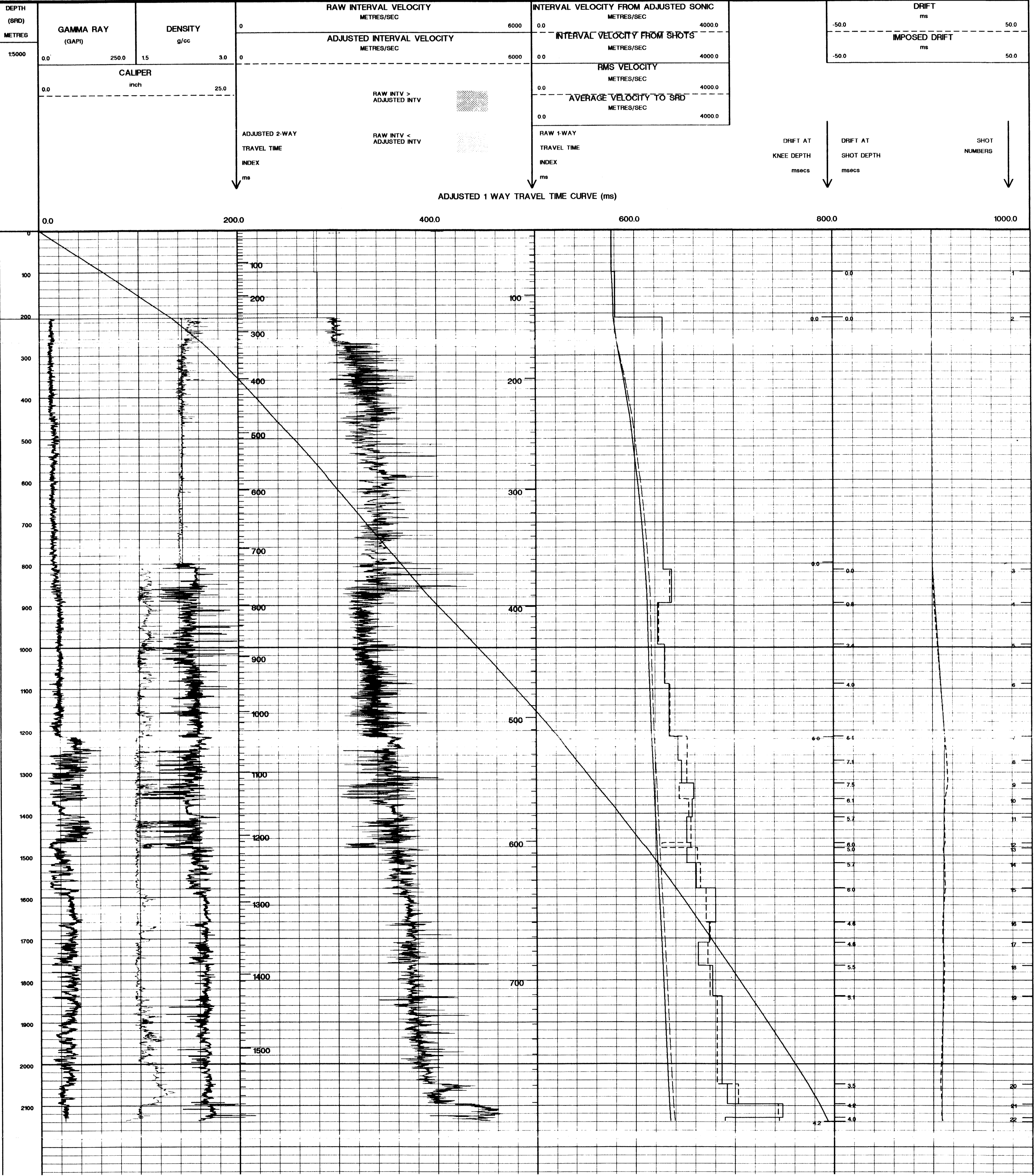
Time Reference: SRD

Run	Date	Tool Type	Bit Size/Depth	Casing Size/Depth	Top Depth	Bottom Depth
1	24-11-88	SOT			231 M	629 M
2	03-12-89	BHC	12 1/4" @ 2182 M	13 3/8" @ 819 M	519 M	2180 M
1	03-12-89	40 M	40 M	5 M BELOW GL	10 M BELOW GL	60

REMARKS

The well name, location and borehole reference data were furnished by the customer

All interpretations are opinions based on inferences from electrical or other measurements and we cannot, and do not guarantee the accuracy or correctness of any interpretations, and we shall not, except in the case of gross or willful negligence on our part, be liable or responsible for any loss, costs, damages or expenses incurred or sustained by anyone resulting from any interpretations made by any of our officers, agents or employees. These interpretations are also subject to Clause 4 of our General Terms and Conditions as set out in our current Price Schedule.



COMPANY ESSO AUSTRALIA LTD.  
FIELD WILDCAT  
WELL ADMIRAL-1  
COUNTRY AUSTRALIA

