



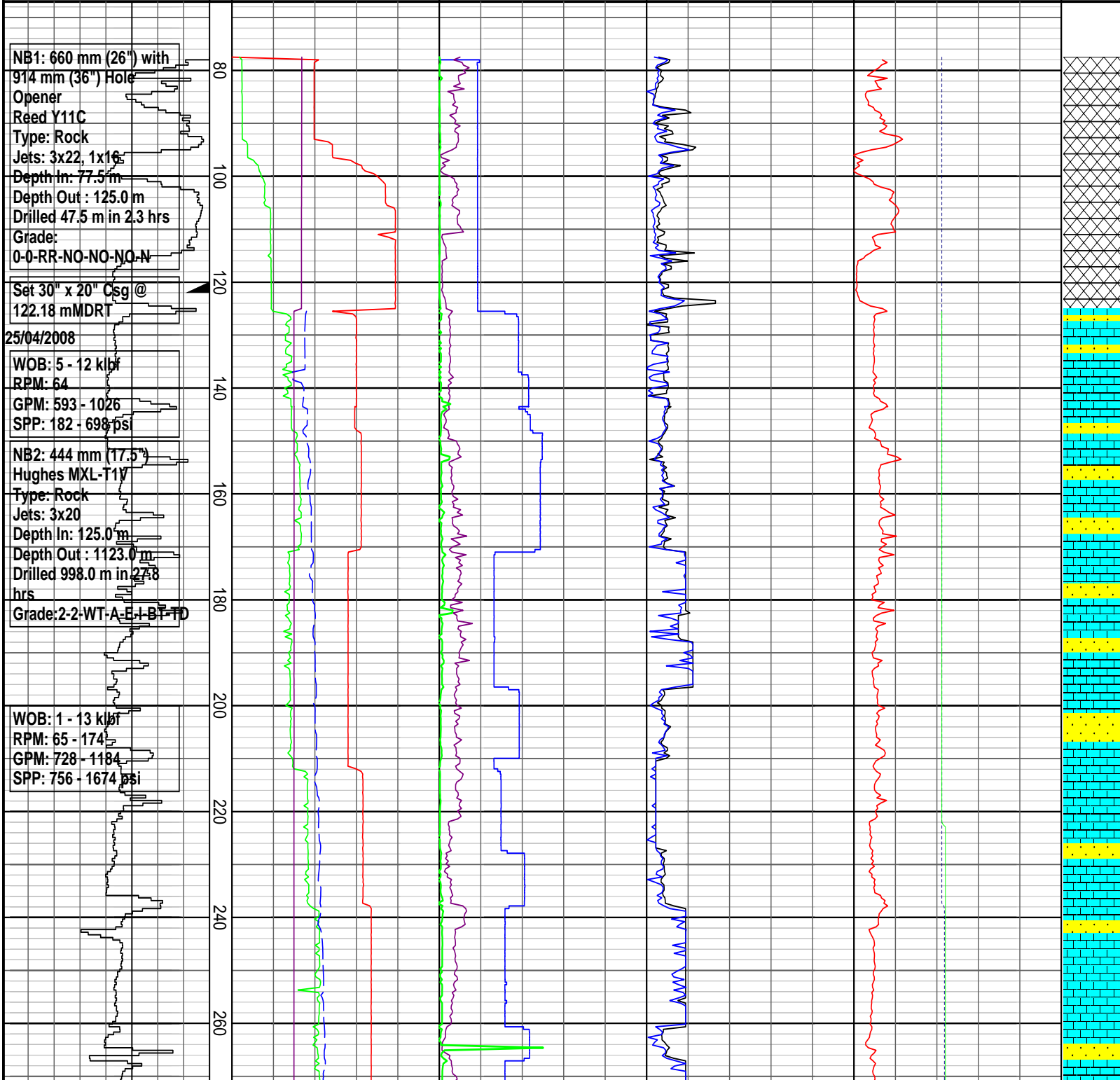
Company : 3D Oil Ltd  
 Well : West Seahorse-3  
 Interval : 67.00 - 1701.35 meters  
 Created : 05/May/2008 6:28:58 AM



INTEQ

### DRILLING DATA PLOT

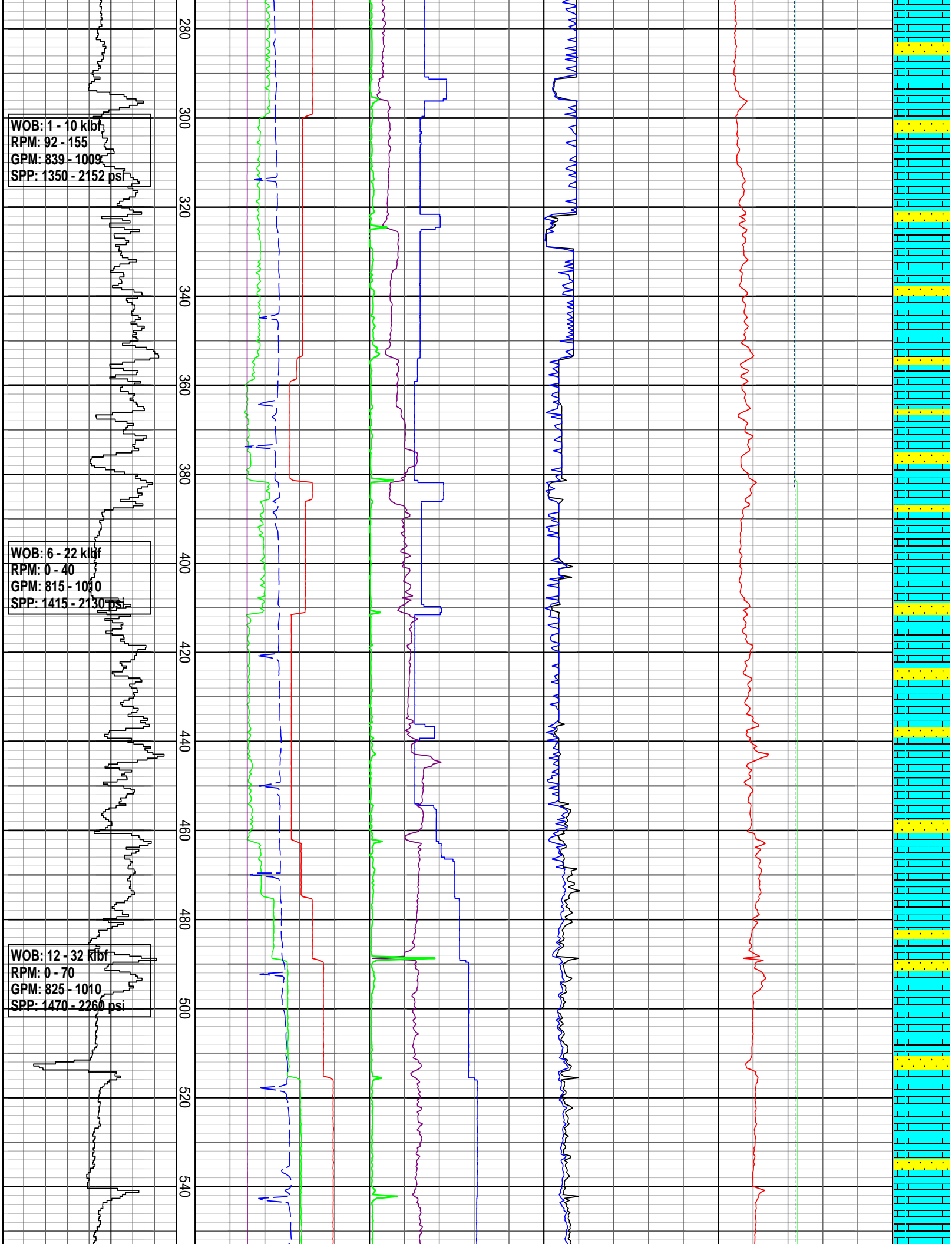
<b>ROP (m/hr)</b> 400   375   350   325   300   275   250   225 <b>ROP (m/hr)</b> 200   175   150   125   100   75   50   25	<b>TD meters 1:1000</b> 80   100   120   140   160   180   200   220   240   260	<b>FLOW IN (gpm)</b> 300   600   900   1200   1500	<b>TOTAL RPM</b> 70   140   210   280   350	<b>TORQUE Max (kft-lb)</b> 5   10   15   20   25	<b>DXC</b> 0.3   3	<b>INTERPRETED LITHOLOGY</b> 
		<b>STANDPIPE (psi)</b> 1000   2000   3000   4000   5000	<b>WOB Avg (klbs)</b> 16   32   48   64   80	<b>TORQUE Avg (kft-lb)</b> 5   10   15   20   25	<b>MW IN (sg)</b> 0.5   1   1.5   2   2.5	
		<b>MT OUT (degC)</b> 20   40   60   80   100	<b>MSE (MPa)</b> 100   200   300   400   500		<b>MW OUT (sg)</b> 0.5   1   1.5   2   2.5	
		<b>MT IN (degC)</b> 20   40   60   80   100				



WOB: 1 - 10 klbf  
RPM: 92 - 155  
GPM: 839 - 1009  
SPP: 1350 - 2152 psi

WOB: 6 - 22 klbf  
RPM: 0 - 40  
GPM: 815 - 1010  
SPP: 1415 - 2130 psi

WOB: 12 - 32 klbf  
RPM: 0 - 70  
GPM: 825 - 1010  
SPP: 1470 - 2260 psi

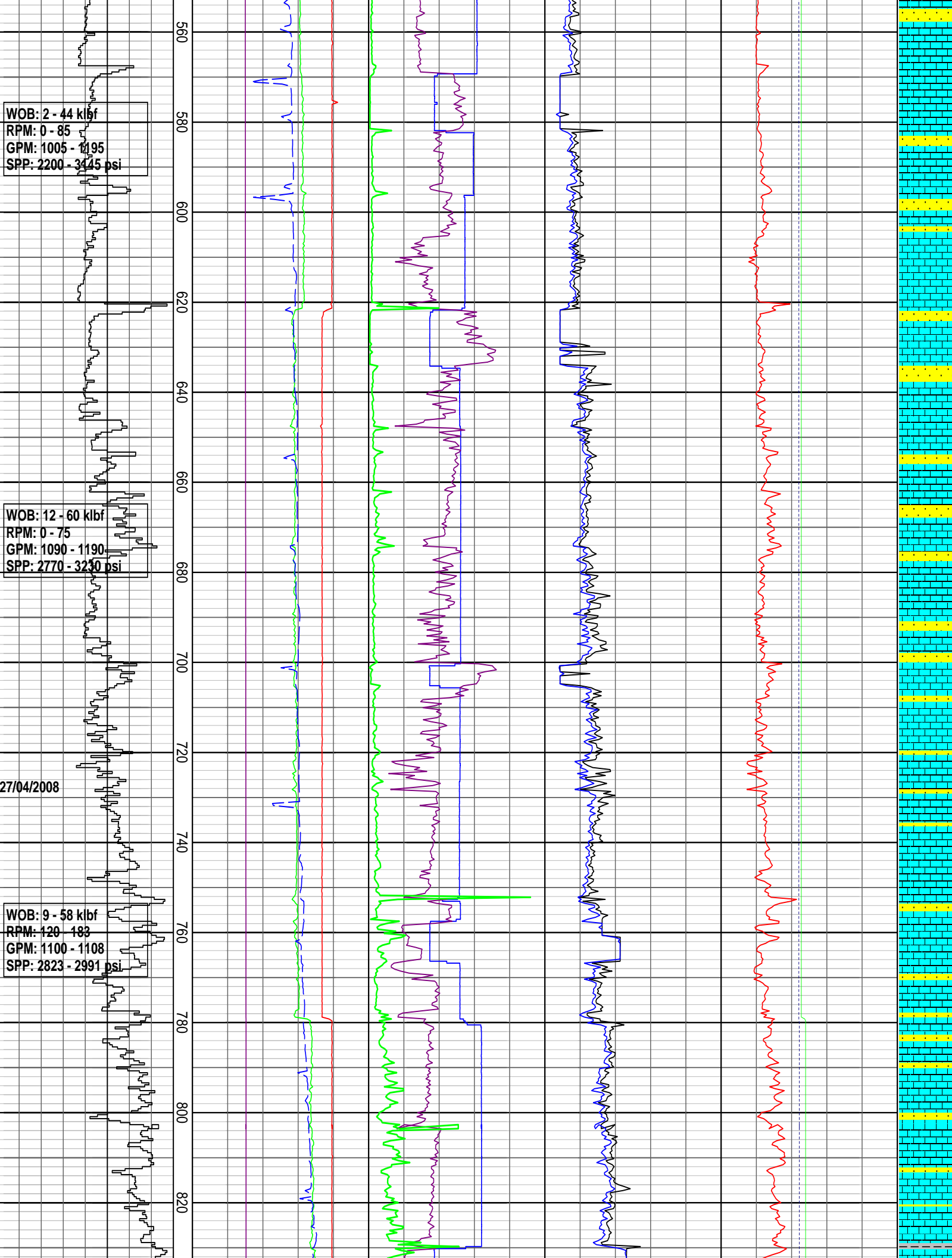


WOB: 2 - 44 klbf  
RPM: 0 - 85  
GPM: 1005 - 1195  
SPP: 2200 - 3145 psi

WOB: 12 - 60 klbf  
RPM: 0 - 75  
GPM: 1090 - 1190  
SPP: 2770 - 3230 psi

WOB: 9 - 58 klbf  
RPM: 120 - 183  
GPM: 1100 - 1108  
SPP: 2823 - 2991 psi

27/04/2008



WOB: 2 - 38 kJbf  
RPM: 122 - 188  
GPM: 1102 - 1193  
SPP: 2860 - 3494 psi

WOB: 7 - 52 kJbf  
RPM: 0 - 100  
GPM: 1125 - 1190  
SPP: 3120 - 3540 psi

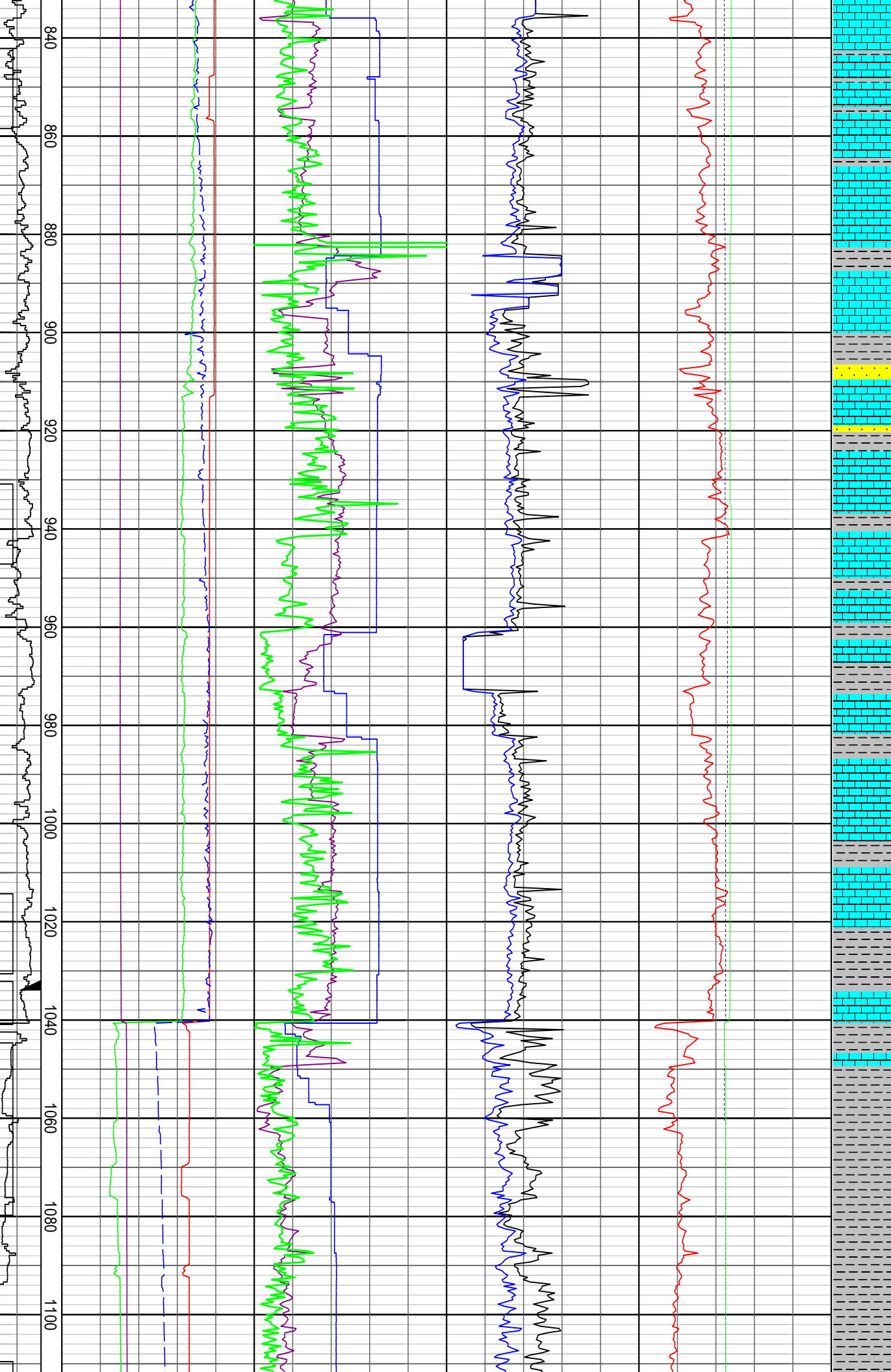
WOB: 10 - 37 kJbf  
RPM: 0 - 100  
GPM: 1140 - 1155  
SPP: 3075 - 3265 psi

Set 13-3/8" Csg @  
1116.82 mMDRT

28/04/2008

NB3: 311 mm (12.25")  
Reed RSX616MA16  
Type: PDC  
Jets: 3x15, 3x16  
Depth In: 1123.0 m  
Depth Out: 1810.0 m  
Drilled 687.0 m in 19.0  
hrs  
Grade:

WOB: 2 - 38 kJbf

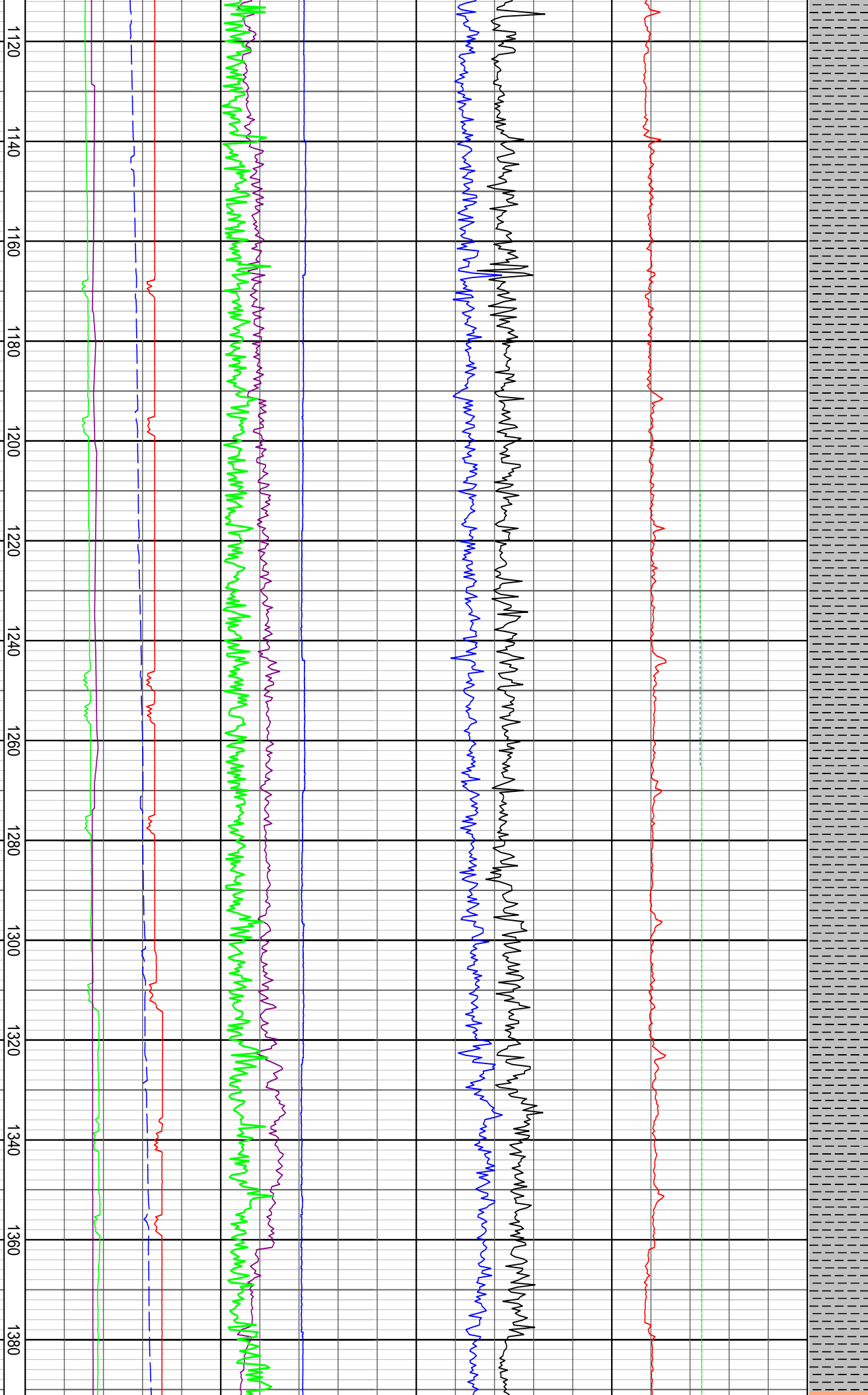


WOB: 2 - 36 kibr  
RPM: 55 - 149  
GPM: 936 - 1150  
SPP: 1245 - 3195 psi

WOB: 7 - 18 kibr  
RPM: 145 - 152  
GPM: 933 - 996  
SPP: 1451 - 1616 psi

04/05/08  
WOB: 14 - 24 kibr  
RPM: 144 - 150  
GPM: 930 - 994  
SPP: 1487 - 1701 psi

WOB: 7 - 26 kibr  
RPM: 143 - 149  
GPM: 952 - 1055



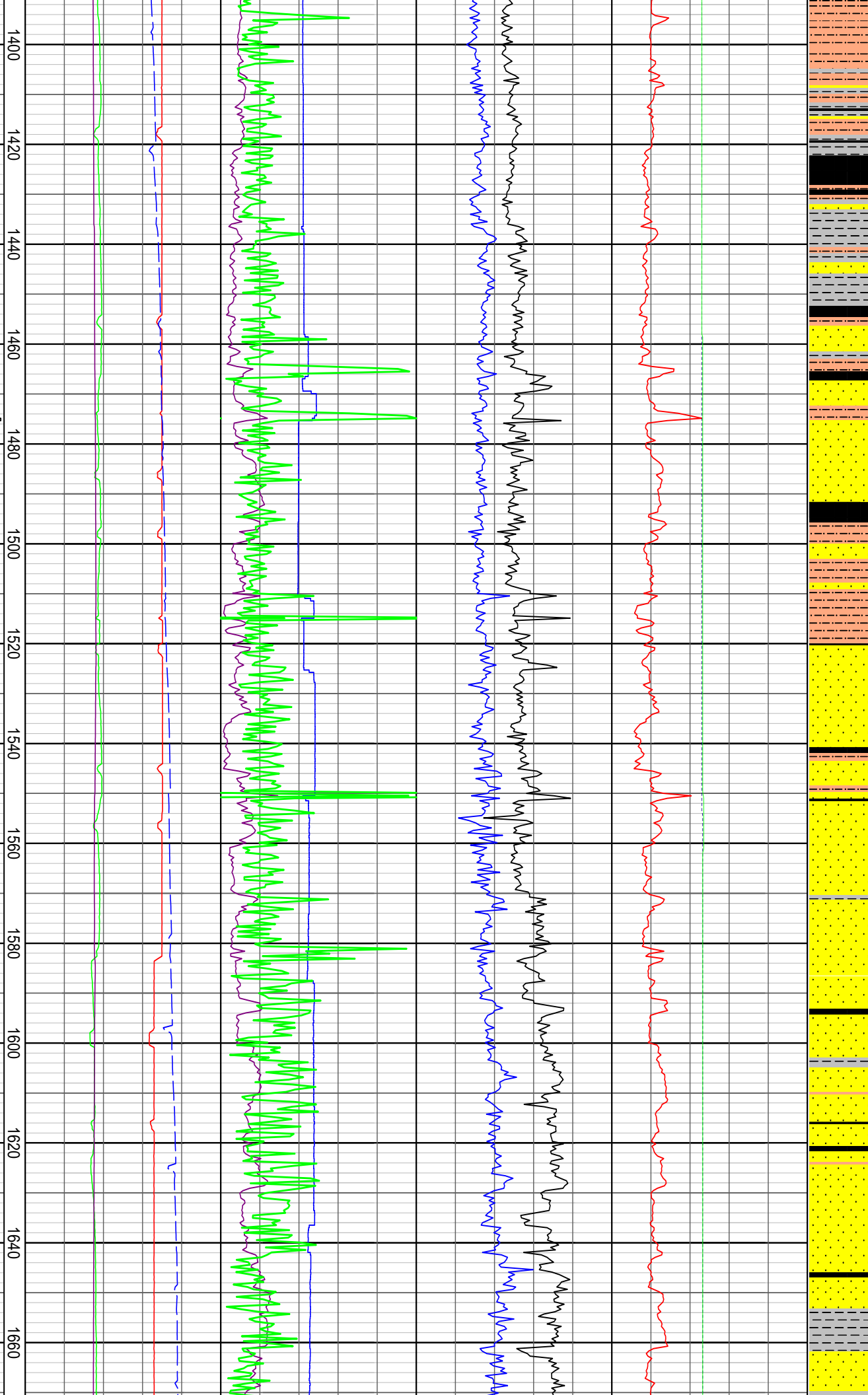
SPP: 1914 - 1914 psi

WOB: 2 - 19 klb  
RPM: 139 - 171  
GPM: 1002 - 1050  
SPP: 1744 - 1959 psi

MW: 1.16 sg  
K: 3.78%  
Rmf: 0.1085 @ 18.7°C  
Rm: 0.1167 @ 19°C  
Rmc: 0.22 @ 19.1°C

WOB: 1 - 23 klb  
RPM: 137 - 169  
GPM: 1012 - 1054  
SPP: 1746 - 1961 psi

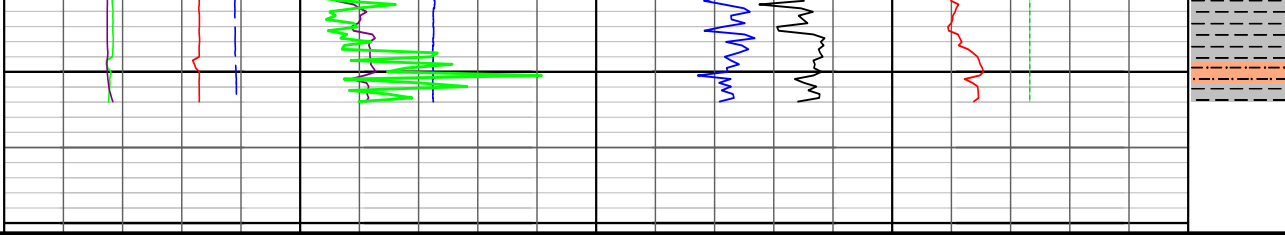
MW: 1.17 sg  
K: 3.82%  
Rmf: 0.1086 @ 22°C  
Rm: 0.1203 @ 22°C  
Rmc: 0.1666 @ 22.4°C



**WOB: 4 - 20 klf**  
**RPM: 154 - 168**  
**GPM: 951 - 1049**  
**SPP: 1654 - 1904 psi**

1680

1700



### DRILLING DATA PLOT

<b>ROP (m/hr)</b> 400   375   350   325   300   275   250   225 <b>ROP (m/hr)</b> 200   175   150   125   100   75   50   25	<b>TVD meters 1:1000</b>	<b>FLOW IN (gpm)</b> 300   600   900   1200   1500	<b>TOTAL RPM</b> 70   140   210   280   350	<b>TORQUE Max (kft-lb)</b> 5   10   15   20   25	<b>DXC</b> 0.3   3	<b>INTERPRETED LITHOLOGY</b>
		<b>STANDPIPE (psi)</b> 1000   2000   3000   4000   5000	<b>WOB Avg (kibs)</b> 16   32   48   64   80	<b>TORQUE Avg (kft-lb)</b> 5   10   15   20   25	<b>MW IN (sg)</b> 0.5   1   1.5   2   2.5	
		<b>MT OUT (degC)</b> 20   40   60   80   100	<b>MSE (MPa)</b> 100   200   300   400   500		<b>MW OUT (sg)</b> 0.5   1   1.5   2   2.5	
		<b>MT IN (degC)</b> 20   40   60   80   100				