



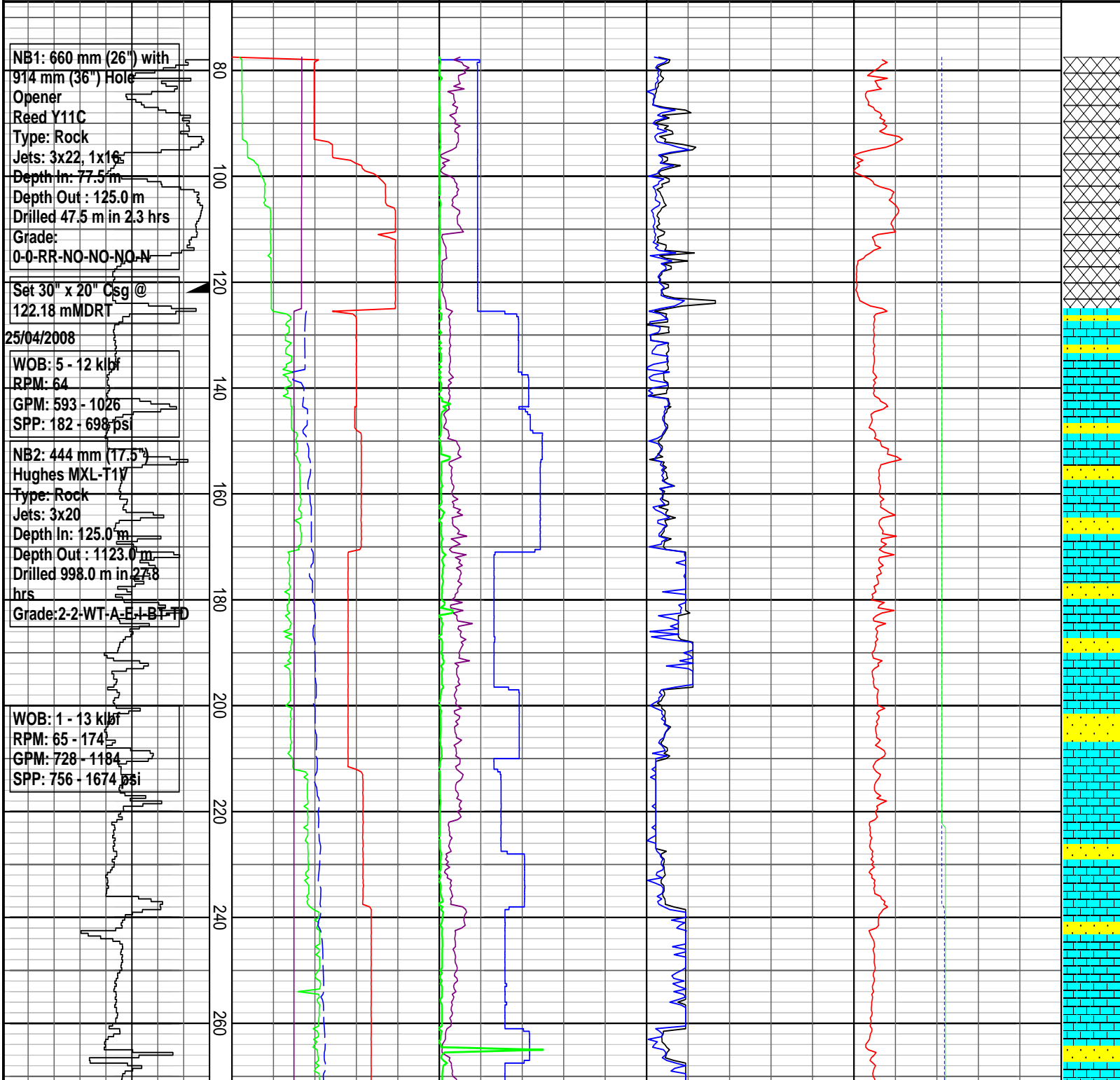
Company : 3D Oil Ltd
 Well : West Seahorse-3
 Interval : 67.00 - 1819.35 meters
 Created : 05/May/2008 6:28:58 AM

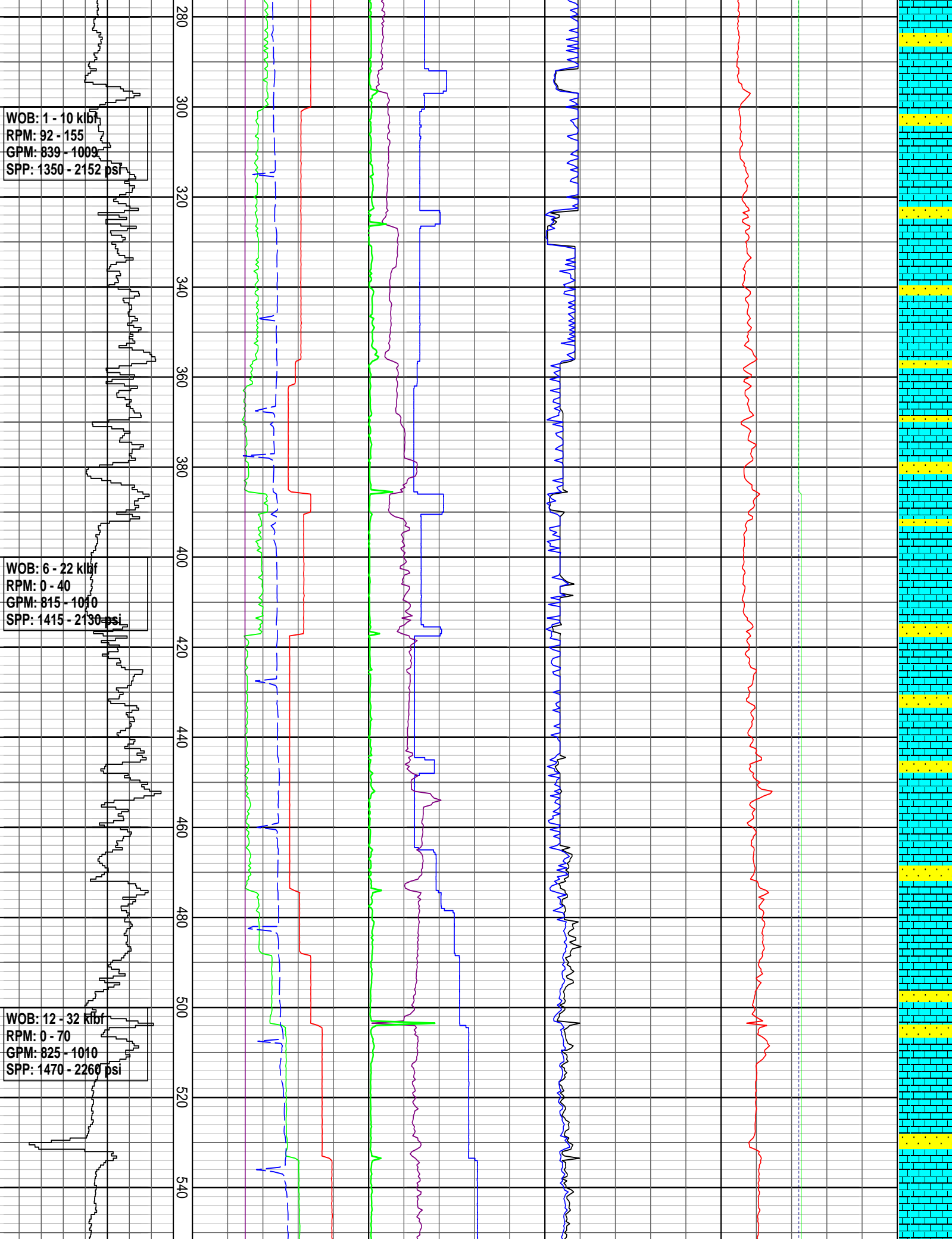


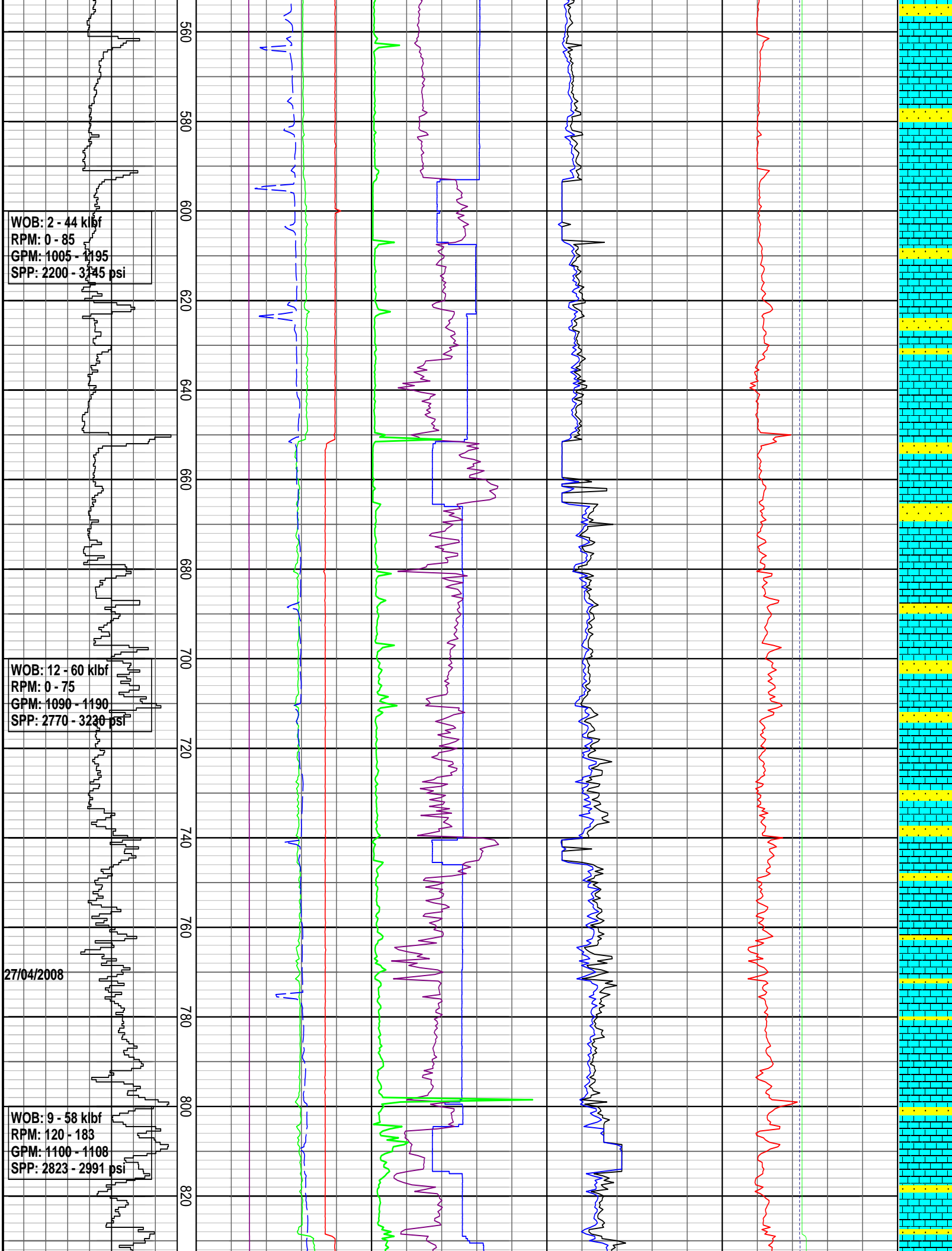
INTEQ

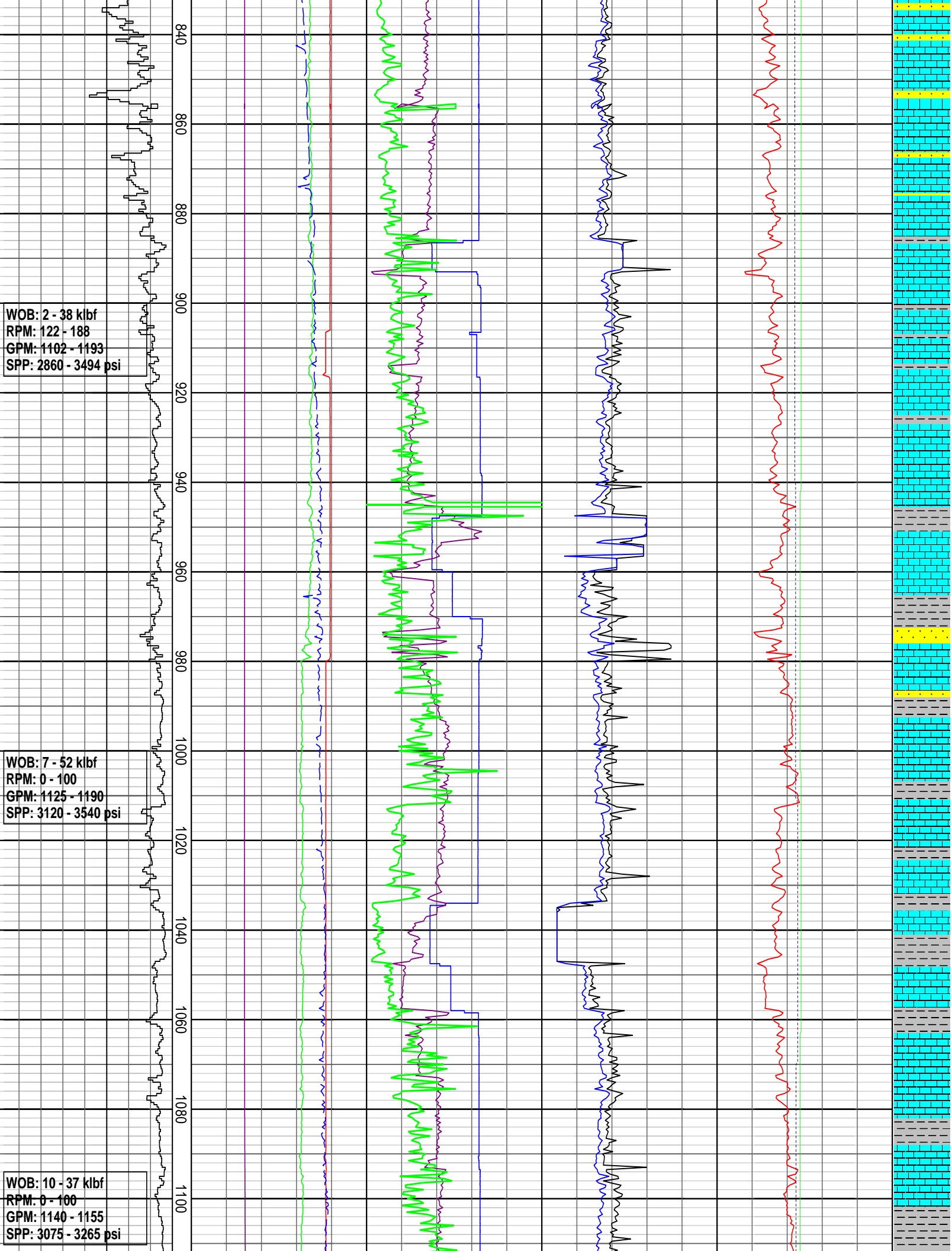
DRILLING DATA PLOT

ROP (m/hr) 400 375 350 325 300 275 250 225 ROP (m/hr) 200 175 150 125 100 75 50 25	MD meters : 1:1000 80 100 120 140 160 180 200 220 240 260	FLOW IN (gpm) 300 600 900 1200 1500	TOTAL RPM 70 140 210 280 350	TORQUE Max (kft-lb) 5 10 15 20 25	DXC 0.3 3	INTERPRETED LITHOLOGY
		STANDPIPE (psi) 1000 2000 3000 4000 5000	WOB Avg (klbs) 16 32 48 64 80	TORQUE Avg (kft-lb) 5 10 15 20 25	MW IN (sg) 0.5 1 1.5 2 2.5	
		MT OUT (degC) 20 40 60 80 100	MSE (MPa) 100 200 300 400 500		MW OUT (sg) 0.5 1 1.5 2 2.5	
		MT IN (degC) 20 40 60 80 100				





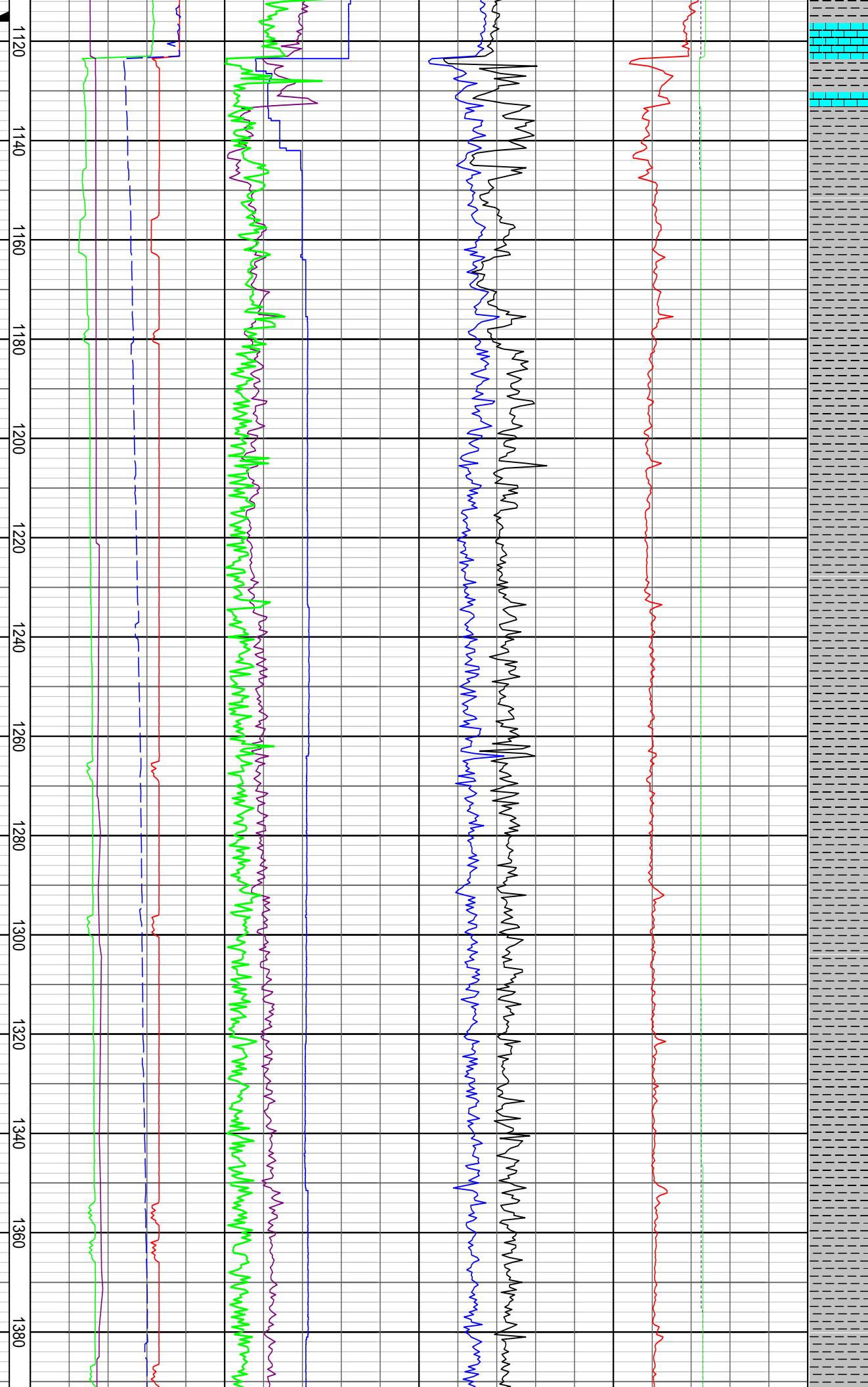




Set 13-3/8" Csg @
1116.62 mMDRT
28/04/2008
NB3: 311 mm (12.25")
Reed RSX616MA16
Type: PDC
Jets: 3x15, 3x16
Depth In: 1123.0 m
Depth Out: 1810.0 m
Drilled 687.0 m in 19.0
hrs
Grade:

WOB: 2 - 38 klf
RPM: 55 - 149
GPM: 936 - 1150
SPP: 1245 - 3195 psi

WOB: 7 - 18 klf
RPM: 145 - 152
GPM: 933 - 996
SPP: 1451 - 1616 psi



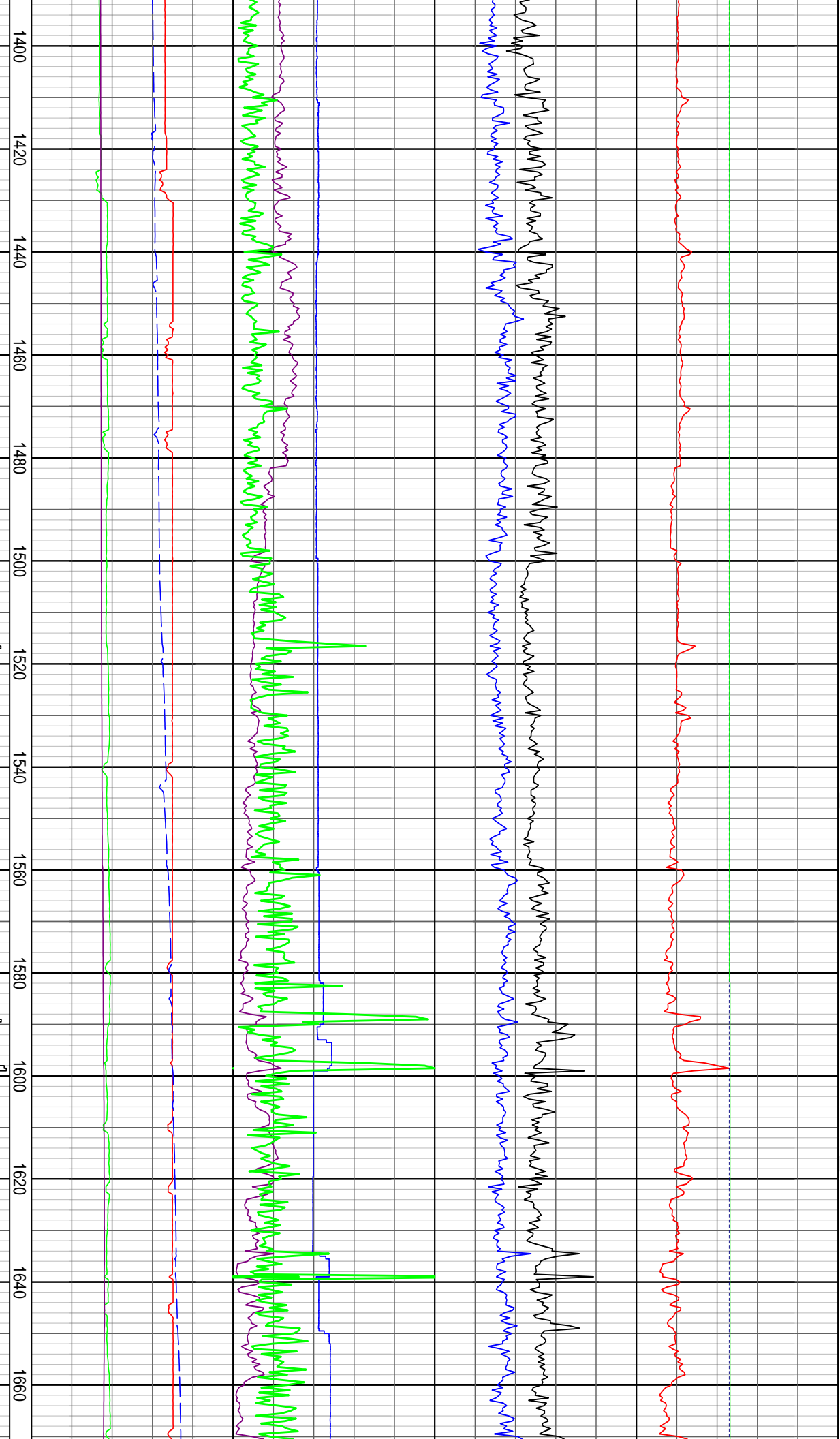
04/05/08

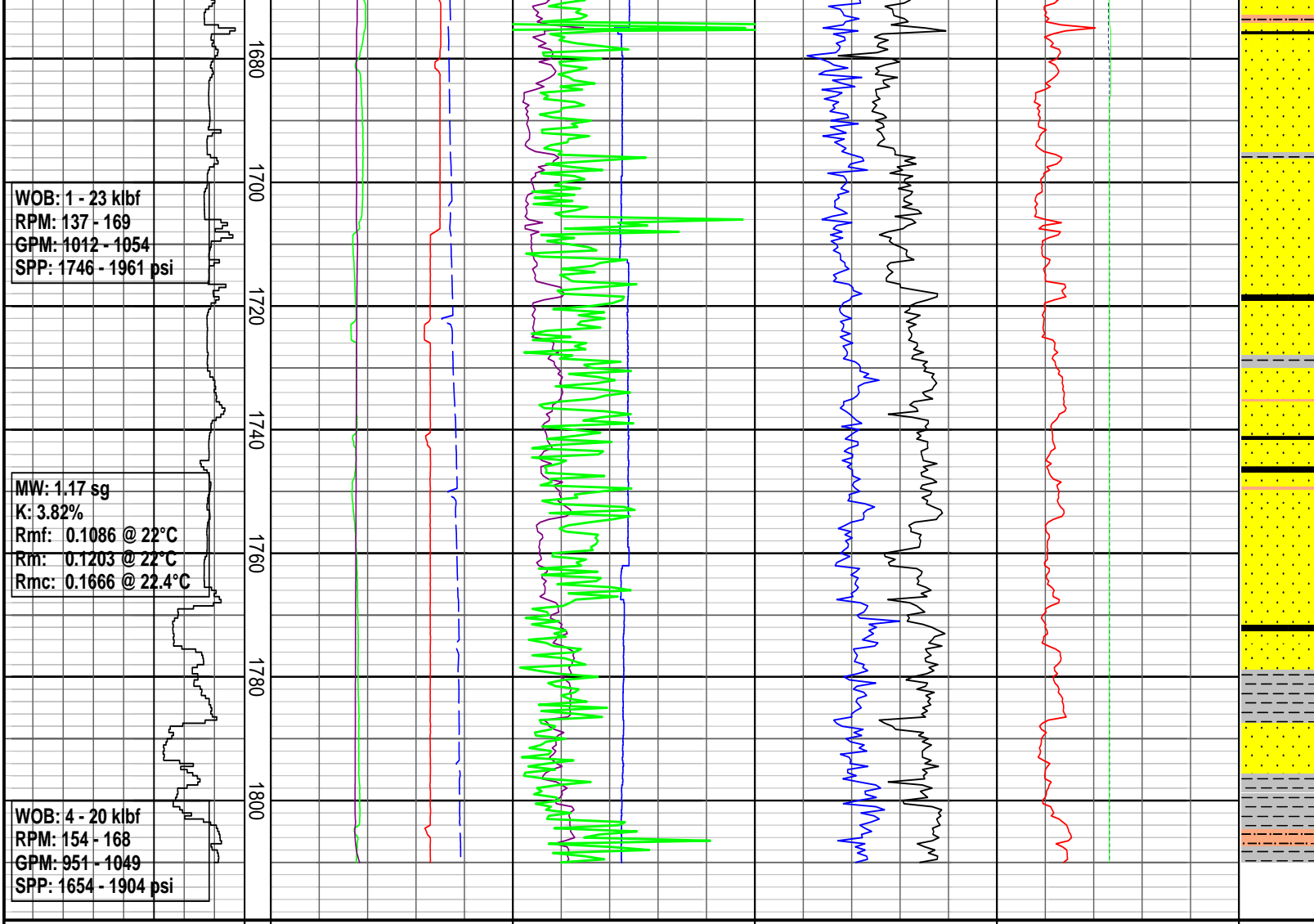
WOB: 14 - 24 klbf
RPM: 144 - 150
GPM: 930 - 994
SPP: 1487 - 1701 psi

WOB: 7 - 26 klbf
RPM: 143 - 149
GPM: 952 - 1055
SPP: 1914 - 1914 psi

WOB: 2 - 19 klbf
RPM: 139 - 171
GPM: 1002 - 1050
SPP: 1744 - 1959 psi

MW: 1.16 sg
K: 3.78%
Rmf: 0.1085 @ 18.7°C
Rm: 0.1167 @ 19°C
Rmc: 0.22 @ 19.1°C





DRILLING DATA PLOT

ROP (m/hr) 225 250 275 300 325 350 375 400 ROP (m/hr) 25 50 75 100 125 150 175 200	MD meters 1:1000	FLOW IN (gpm) 300 600 900 1200 1500	TOTAL RPM 70 140 210 280 350	TORQUE Max (kft-lb) 5 10 15 20 25	DXC 0.3 3	INTERPRETED LITHOLOGY	
		STANDPIPE (psi) 1000 2000 3000 4000 5000	WOB Avg (klbs) 16 32 48 64 80	TORQUE Avg (kft-lb) 5 10 15 20 25			MW IN (sg) 0.5 1 1.5 2 2.5
		MT OUT (degC) 20 40 60 80 100	MSE (MPa) 100 200 300 400 500				MW OUT (sg) 0.5 1 1.5 2 2.5
		MT IN (degC) 20 40 60 80 100					