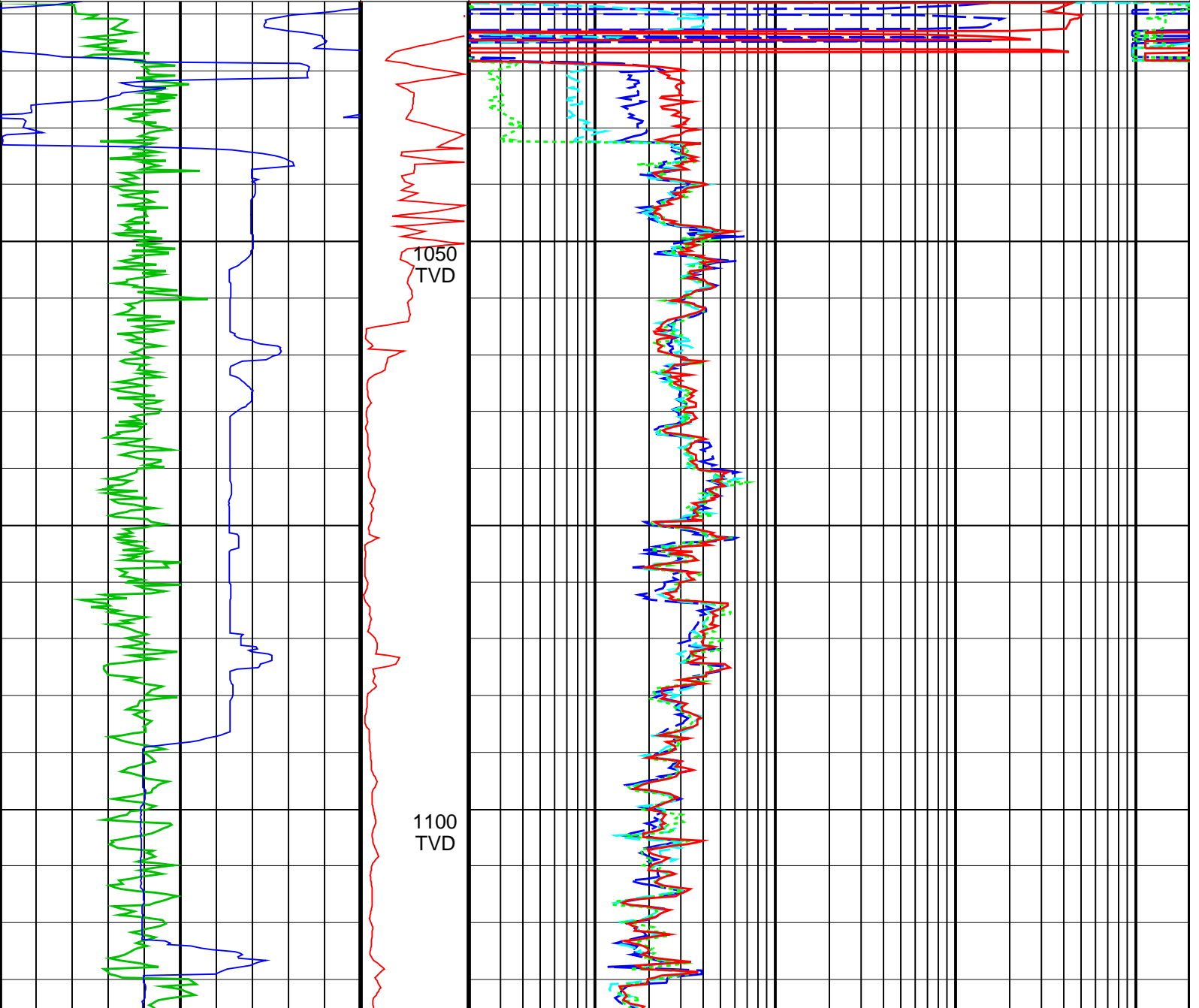


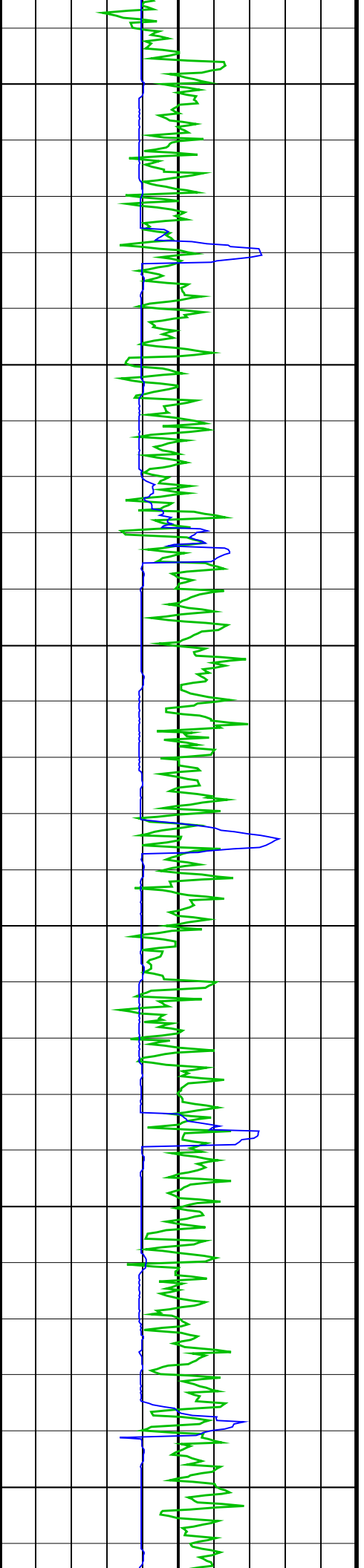
# RT GVR Resistivity 1:500TVD

IDEAL Version: ID13\_0C\_08 <TVD> Vertical Scale: 1:500

Graphics File Created: 04-May-2008 20:47

		<b>Ring Resistivity, Real-Time (RES_RING_RT)</b>	
0.2		(OHMM)	2000
		<b>Shallow Button Resistivity, Real-Time (RES_BS_RT)</b>	
0.2		(OHMM)	2000
		<b>Medium Button Resistivity, Real-Time (RES_BM_RT)</b>	
0.2		(OHMM)	2000
<b>RAB Gamma Ray, Real-Time (GR_RAB_RT)</b>		<b>Deep Button Resistivity, Real-Time (RES_BD_RT)</b>	
0		(GAPI)	200
<b>ROP*5 (ROP5)</b>		<b>PKPK_RPM (Stick_RT)</b>	
100		(M/HR)	0
			400

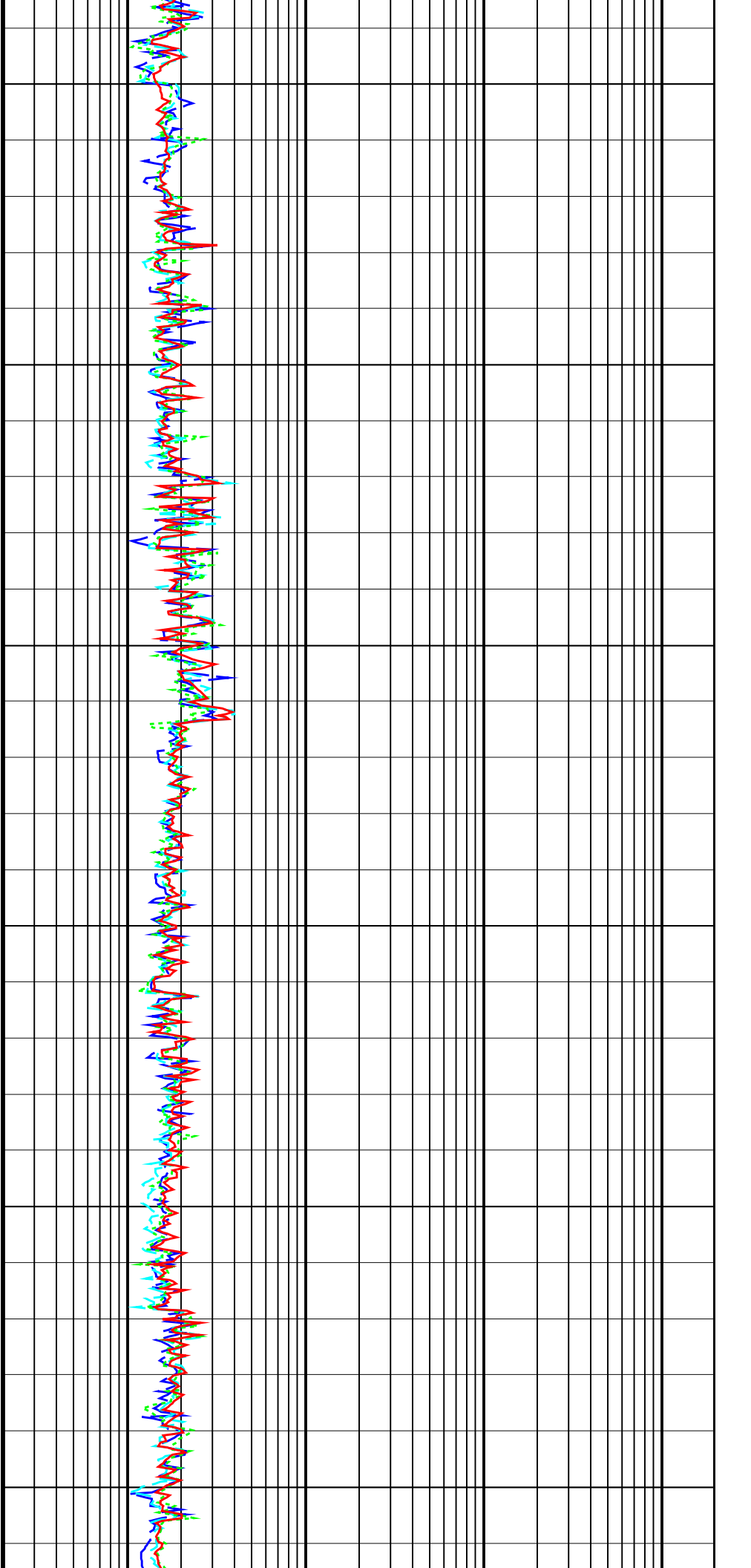


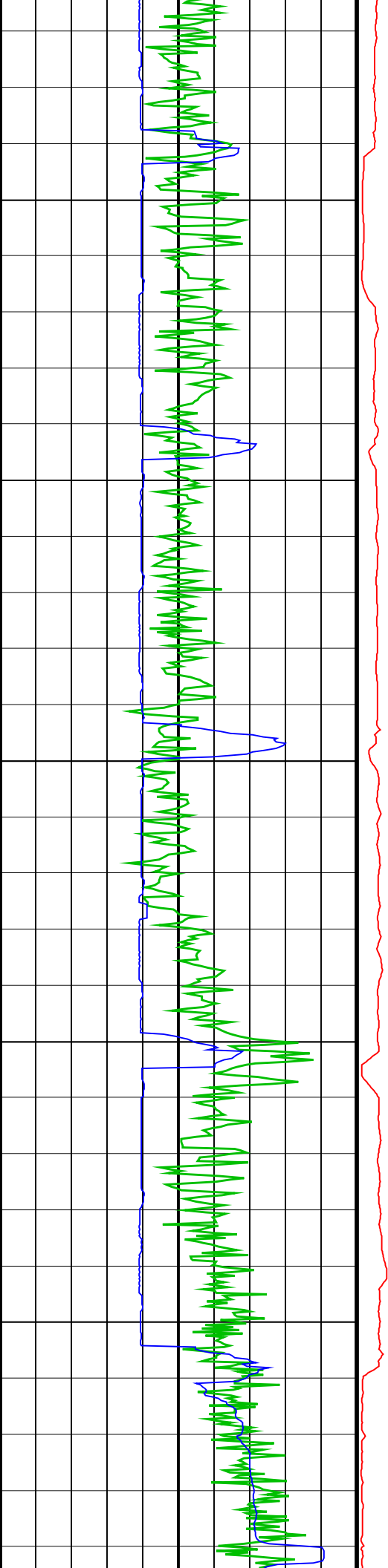


1150  
TVD

1200  
TVD

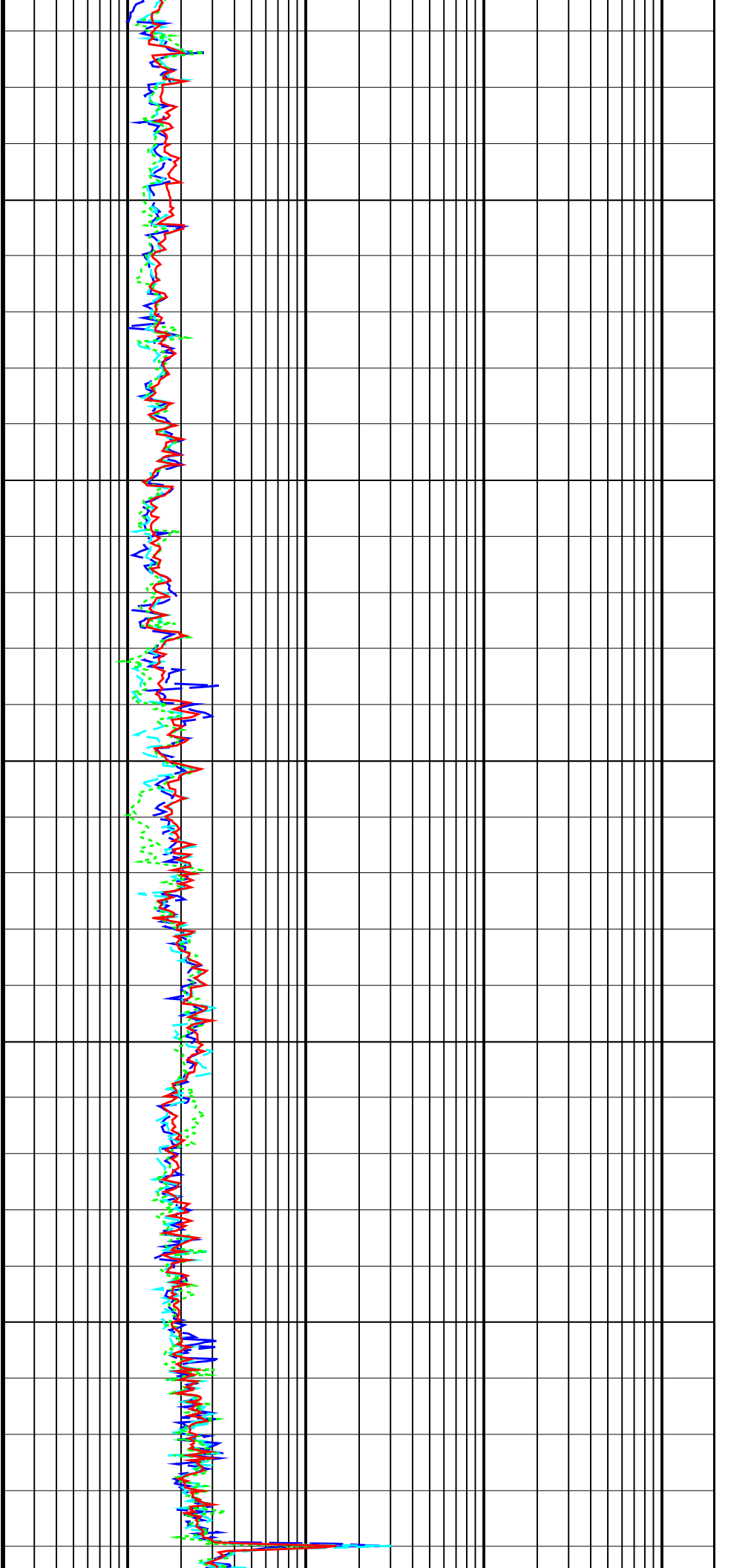
1250  
TVD

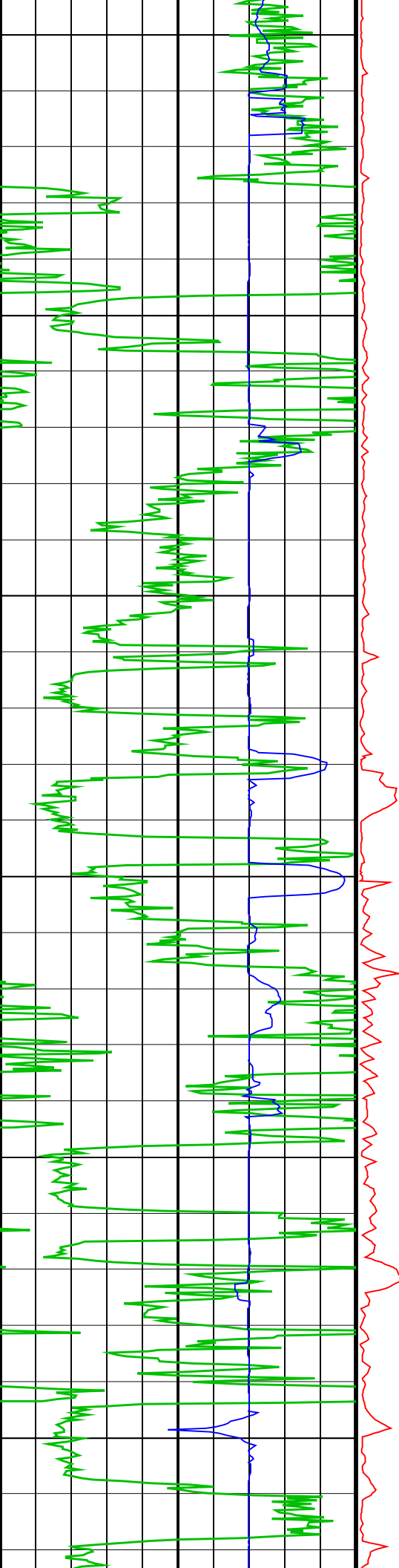




1300  
TVD

1350  
TVD





1400  
TVD

1450  
TVD

1500  
TVD

