

**SANDSTONE:** dk olv gy, yel, hd- v hd, v crs gr, sbang-sbrnnd, rndd i/p, mnr f musc & biot flks, tr blk carb mat, hi calc, n vis por; abd lse sd, trnsl-trnsp, f qtz gr, pr srt

**Survey @ 182.420 mMDRT**  
 Incl: 2.72° Azi: 71.56°  
 TVD: 182.4 m

**CALCARENITE:** v pl or-wh, trnsl-trnsp, hd, tr f qtz gr, sbang qtz, calc frag, mnr shl frag, mnr foss, wl calc cmt, n vis por

**Survey @ 210.69 mMDRT**  
 Incl: 4.37° Azi: 68.83°  
 TVD: 210.6 m

**SANDSTONE:** dk olv gy, yel, hd-v hd, v crs calc gr, sbang-sbrnnd, rndd i/p, mnr f musc & biot flks, tr blk carb mat, hi calc, n vis por; abd lse sd, trnsl-trnsp, f qtz, pr srt

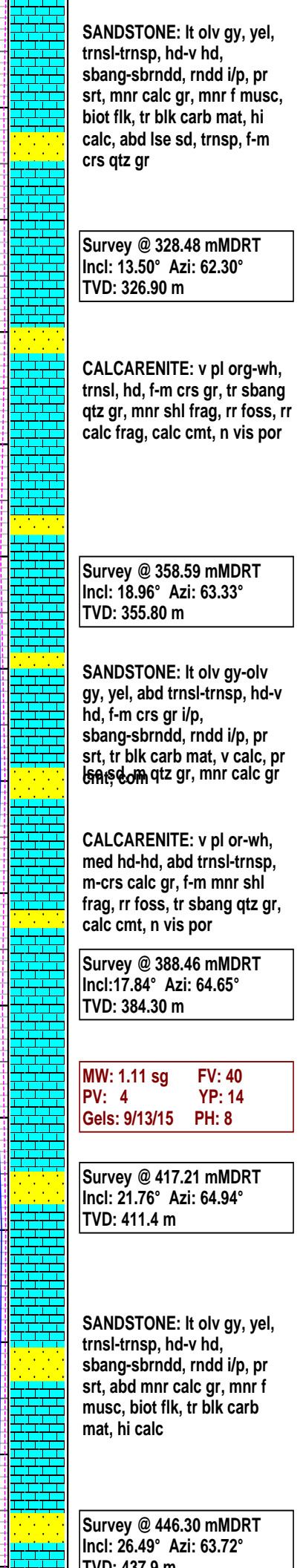
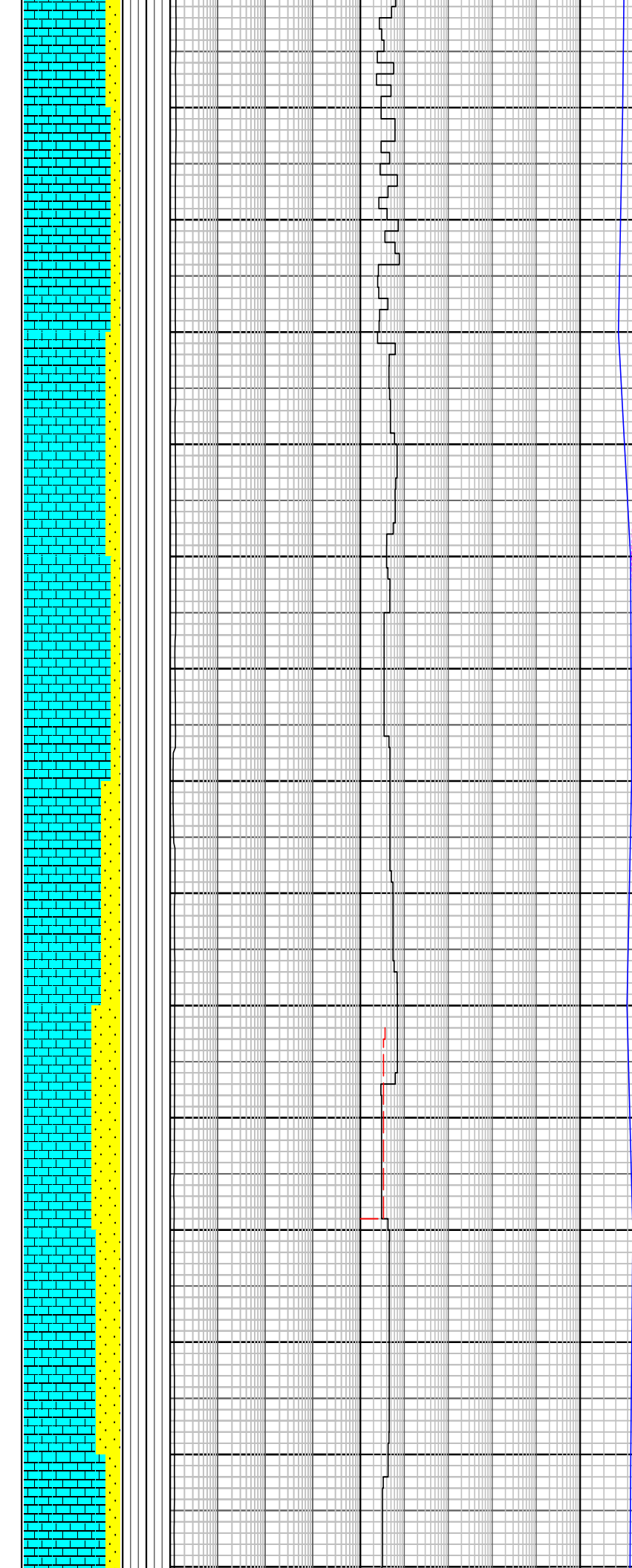
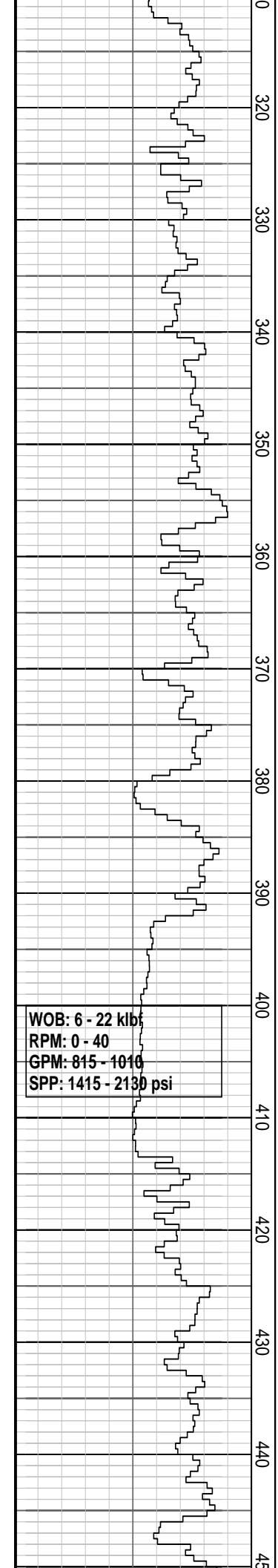
**Survey @ 240.38 mMDRT**  
 Incl: 6.29° Azi: 66.14°  
 TVD: 240.2 m

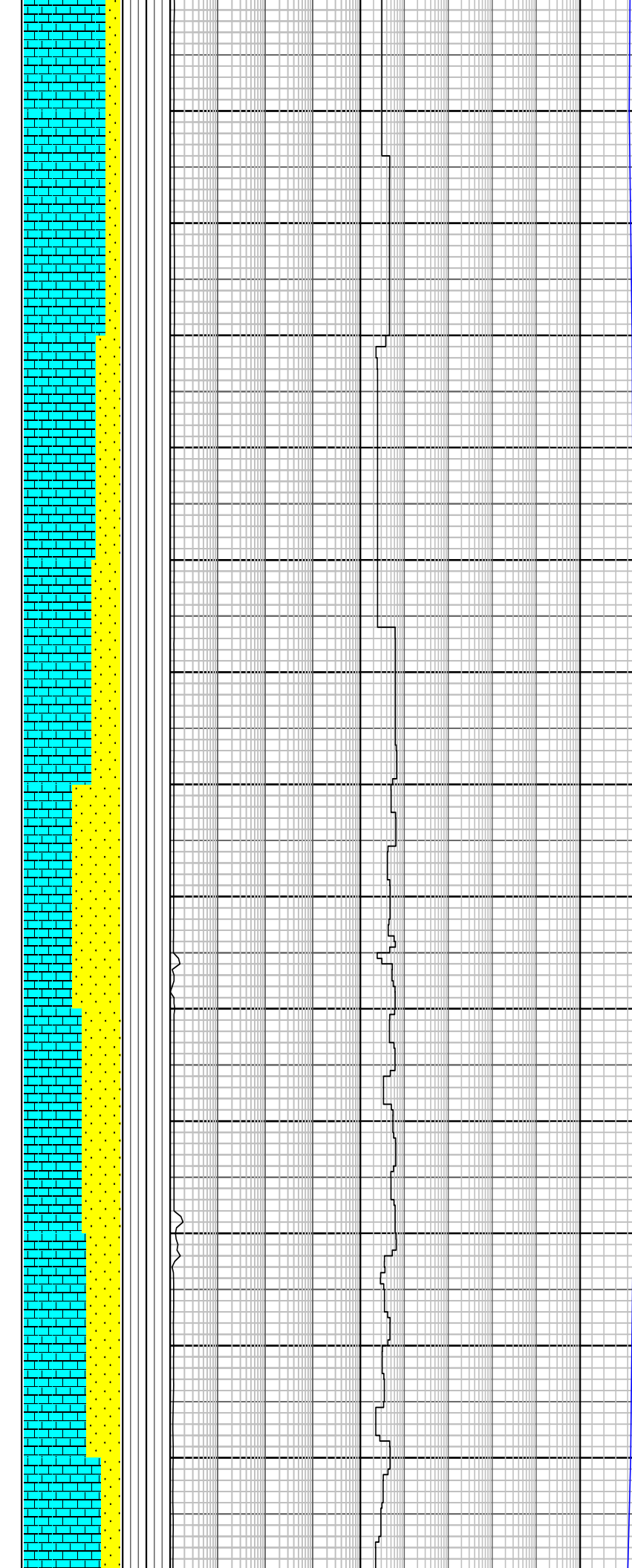
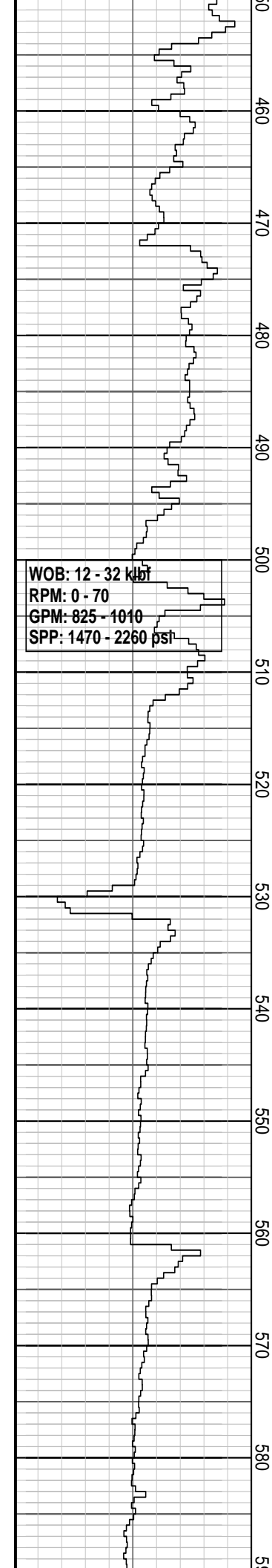
**CALCARENITE:** v pl or-wh, trnsl-trnsp, hd, tr f qtz gr, sbang qtz gr, mnr shl frag, rr foss, rr calc frag, wl calc cmt, v pr por

**Survey @ 269.55 mMDRT**  
 Incl: 8.46° Azi: 64.16°  
 TVD: 269.1 m

**CALCARENITE:** v pl or-wh, trnsl, f gr, m-crs gr, sbang qtz gr i/p, hd, mnr shl frag, rr foss, rr calc frag, calc cmt, n vis por

**Survey @ 299.18 mMDRT**  
 Incl: 10.92° Azi: 63.65°  
 TVD: 298.3 m





TVD: 437.9 m

**CALCARENITE:** m gy-brnsh gy, lt olv gy, org-wh, m hd-v hd, m-crs calc gr, sbang-sbrndd, f-m shl frag, rr foss, abd calc frag, n vis por; abd lse qtz, trnsi-trnsp, f-v crs qtz gr, sbang qtz, v calc

Survey @ 476.28 mMDRT  
 Incl: 27.59° Azi: 64.07°  
 TVD: 464.6 m

**SANDSTONE:** lt olv gy, yel, trnsi-trnsp, hd-v hd, sbang-sbrndd, rndd i/p, pr srt, abd mnr calc gr, mnr f musc, biot flk, tr blk carb mat, hi calc

Survey @ 505.67 mMDRT  
 Incl: 26.62° Azi: 62.93°  
 TVD: 490.8 m

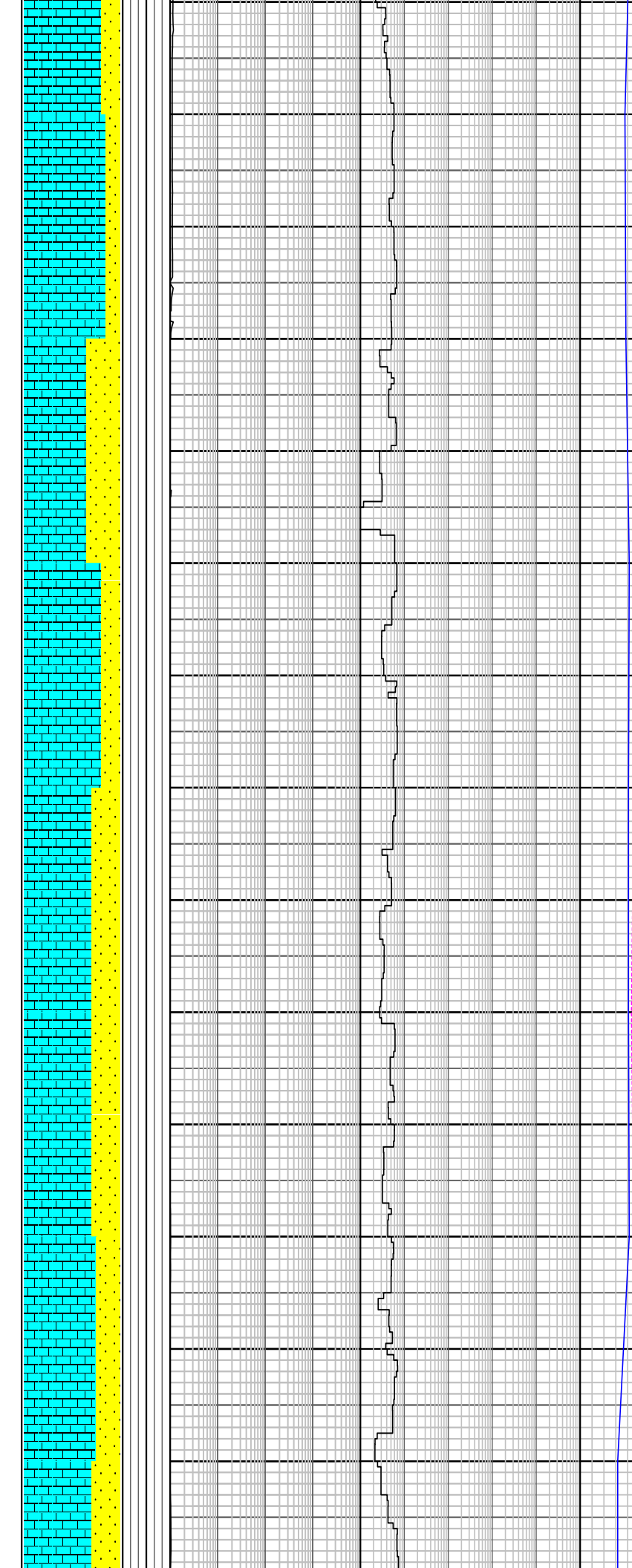
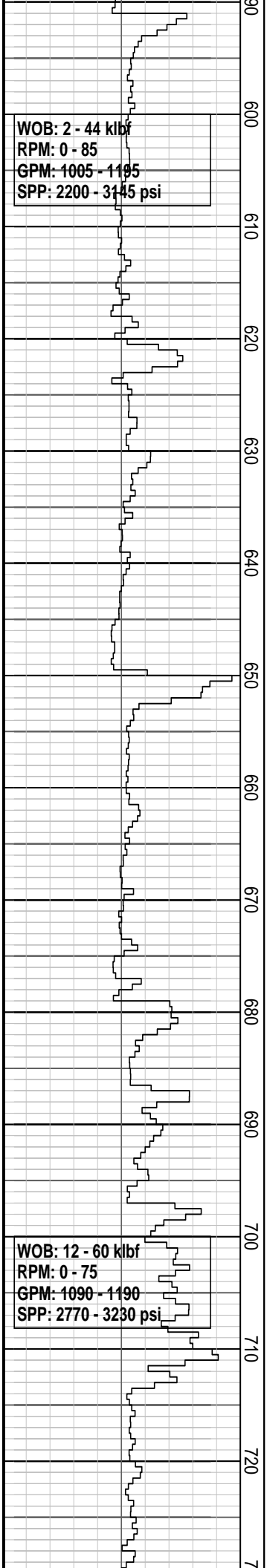
**CALCARENITE:** yelsh gy-lt gy, or-wh, m hd-v hd, v f-f calc gr, v crs calc gr i/p, ang-sbrndd, f-m mnr shl frag, rr foss, mnr blk lit, wl cmt, inf pak, abd lse sd, trnsi, pl yel-org, m-crs gr

Survey @ 534.94 mMDRT  
 Incl: 25.98° Azi: 64.99°  
 TVD: 517.0 m

**CALCARENITE:** yelsh gy-lt gy, lt olv gy, m hd-v hd, ang-sbrndd, tr shl frag, rr foss, mnr blk lit, wl cmt, inf calc cmt, inf pr por; abd lse sd, or-wh, trnsi, pl yel-or, v f-f gr, mod calc

Survey @ 564.20 mMDRT  
 Incl: 25.09° Azi: 64.81°  
 TVD: 543.4 m

**CALCARENITE:** m gy-yelsh gy, lt olv gy, m hd-v hd, sbang-sbrndd, f-m shl frag, rr foss, calc frag, n vis por; com lse sd, or-wh, trnsi-trnsp, tr sbang qtz



MW: 1.14 sg FV: 41  
 PV: 8 YP: 24  
 Gels: 10/12/15 PH: 8

**CALCARENITE:** m gy-yelsh gy, lt olv gy, m hd-v hd, sbang-sbrndd, f-m shl frag, rr foss, calc frag, n vis por; lse sd i/p, or-wh, trnsl-trnsp, tr sbang qtz

Survey @ 622.88 mMDRT  
 Incl: 26.34° Azi: 65.72°  
 TVD: 596.3 m

**SANDSTONE:** lt olv gy, yel, trnsl-trnsp, hd-v hd, sbang-sbrndd, rndd i/p, pr srt, abd mnr calc gr, mnr f musc, biot flk, tr blk carb mat, hi calc

Survey @ 653.06 mMDRT  
 Incl: 26.88° Azi: 63.47°  
 TVD: 623.3 m

**CALCARENITE:** yelsh gy-lt gy, lt olv gy, org-wh, m hd-v hd, v f-f calc gr, f-m shl frag, foss, mnr blk lit, wl cmt, inf calc cmt, inf pr por; lse sd, trnsl, pl yel-or, ang-sbrndd, v crs gr i/p,

Survey @ 682.2 mMDRT  
 Incl: 27.67° Azi: 62.3°  
 TVD: 649.2 m

**SANDSTONE:** lt olv gy, yel, trnsl-trnsp, hd-v hd, sbang-sbrndd, rndd i/p, pr srt, abd mnr calc gr, mnr f musc, biot flk, tr blk carb mat, hi calc

Survey @ 711.65 mMDRT  
 Incl: 27.35° Azi: 62.78°  
 TVD: 675.3 m

**CALCARENITE:** lt olv gy-olv gy, v f-f calc gr, m hd-v hd, ang-sbrndd, f-m mnr shl frag, rr foss, mnr blk lit, wl cmt, pr vis por; lse sand, pl yel-or,

trnsl, v crs qtz gr i/p

Survey @ 740.89 mMDRT  
Incl: 27.59° Azi: 61.96°  
TVD: 701.2 m

**CALCARENITE:** lt olv gy-gnsh gy, trnsl, opq i/p, hd-v hd, fri i/p, m-v crs qtz gr i/p, ang-sbang, sbrndd i/p, pr srt, tr foss frag, tr glau, calc cmt

MW: 1.10 sg FV: 48  
PV: 8 YP: 24  
Gels: 10/12/15 PH: 8.5

Survey @ 771.14 mMDRT  
Incl: 27.57° Azi: 61.42°  
TVD: 728.10 m

**CALCARENITE:** lt olv gy-gnsh gy, dk gy i/p, trnsl, opq i/p, hd-v hd, fri i/p, v crs qtz gr i/p, ang-sbang, sbrndd i/p, pr srt, tr foss frag, tr glau, grad to CLCLT, mod calc cmt

**CALCILUTITE:** wh, lt olv gy, f-crs gr, calc slt, v f qtz gr, tr glau, sft

Survey @ 800.56 mMDRT  
Incl: 27.44° Azi: 61.28°  
TVD: 754.20 m

**CALCARENITE:** lt olv gy-gnsh gy, dk gy i/p, trnsl, hd-v hd, ang-sbang, sbrndd i/p, opq i/p, fri i/p, v crs gr, tr qtz gr, pr srt, tr foss frag, tr glau, grad to CLCLT, mod calc cmt

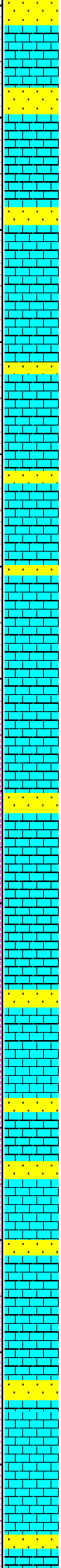
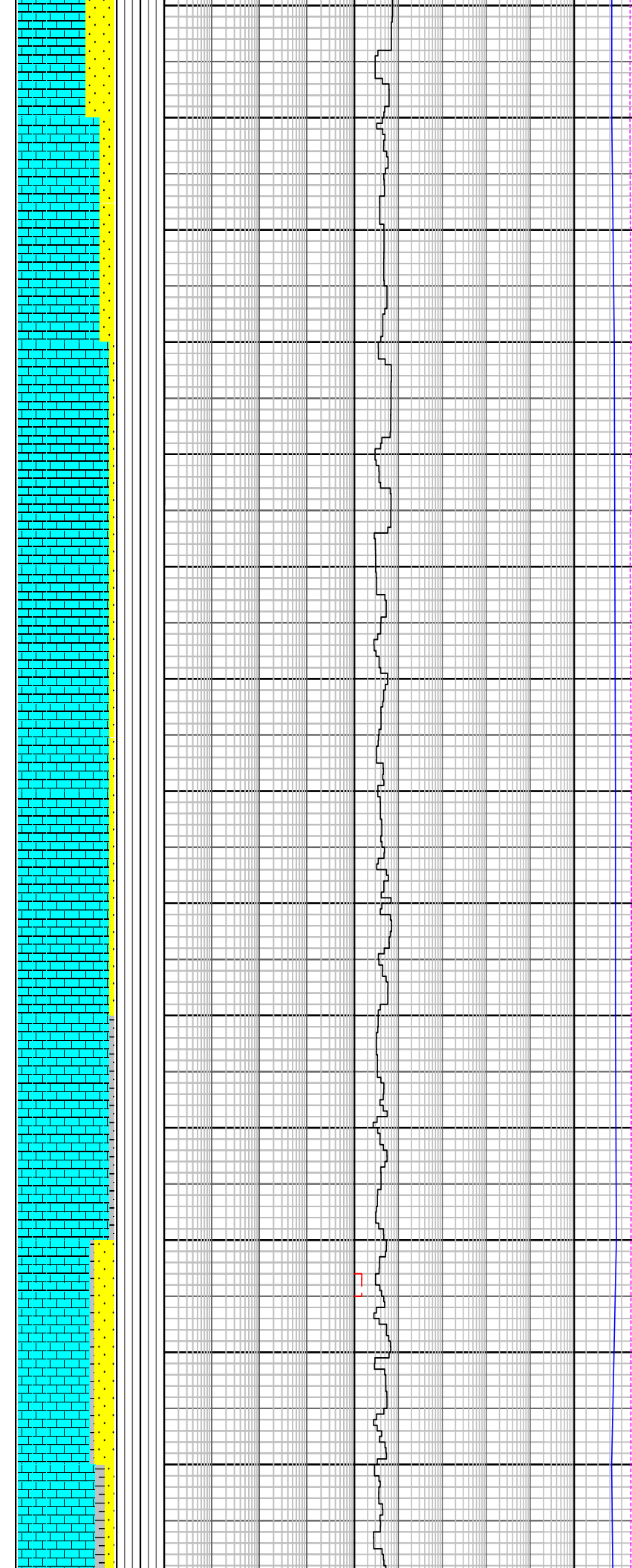
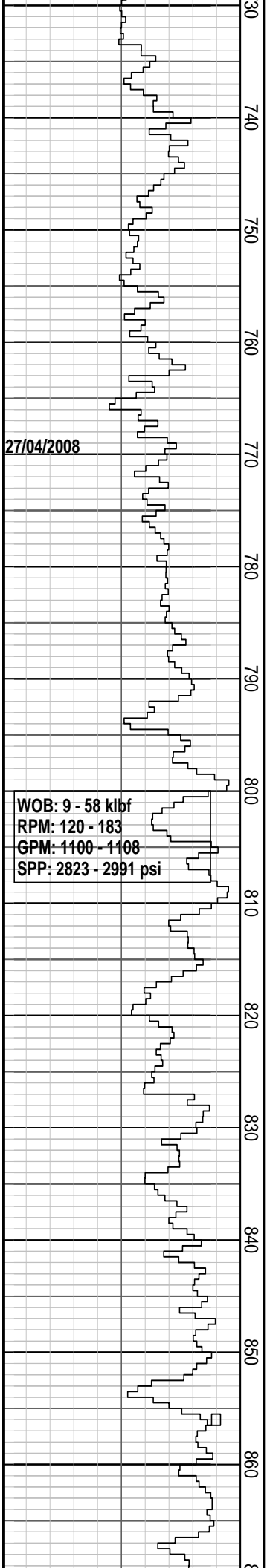
**CALCILUTITE:** wh, lt olv gy, v f qtz gr, f-crs gr, calc slt, tr glau, sft

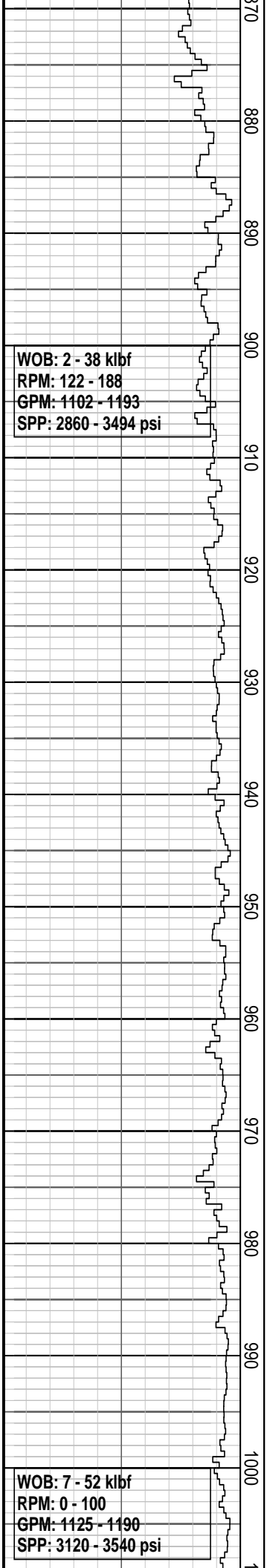
Survey @ 829.48 mMDRT  
Incl: 27.47° Azi: 61.73°  
TVD: 779.80 m

**CALCARENITE:** lt olv gy-gnsh gy, dk gy i/p, trnsl, opq i/p, hd-v hd, fri i/p, v crs gr, m qtz gr i/p, ang-sbang, sbrndd i/p, pr srt, tr foss frag, tr glau, grad to CLCLT, mod calc

Survey @ 858.78 mMDRT  
Incl: 27.34° Azi: 61.53°  
TVD: 805.70 m

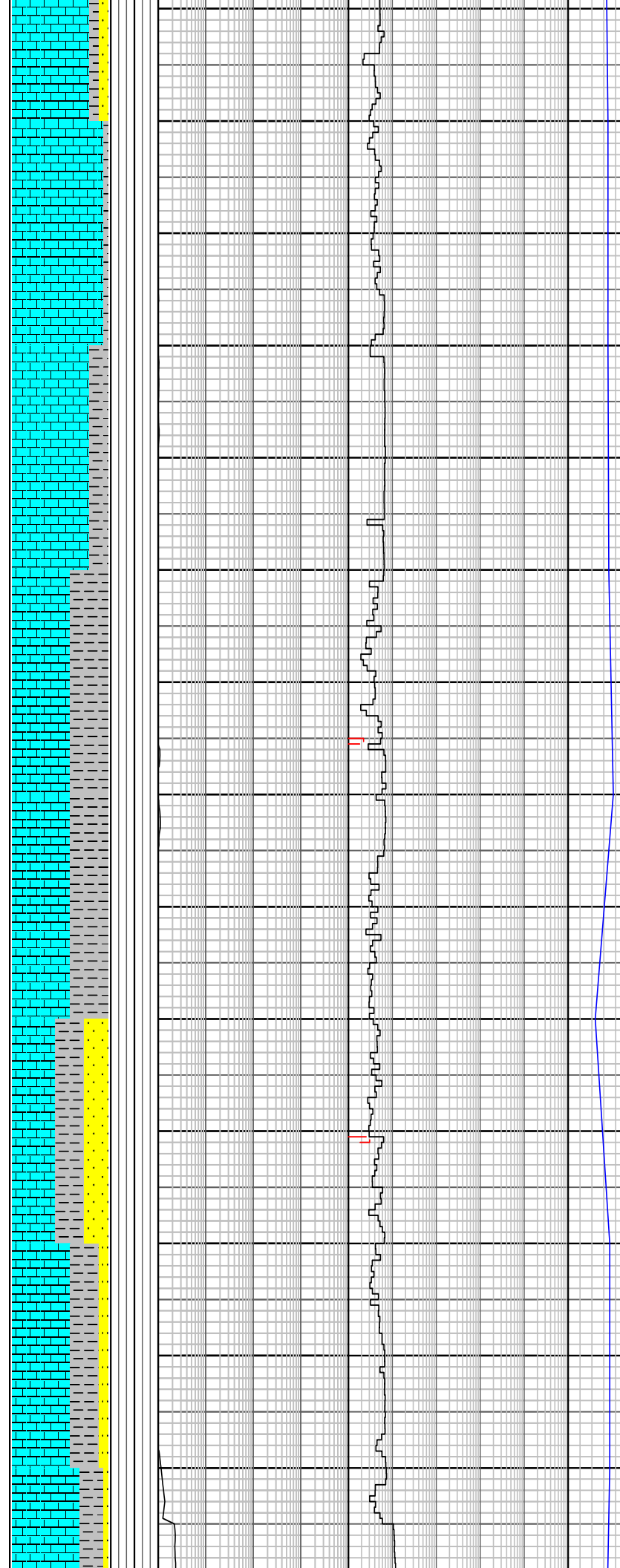
**CALCARENITE:** lt olv





WOB: 2 - 38 kbf  
RPM: 122 - 188  
GPM: 1102 - 1193  
SPP: 2860 - 3494 psi

WOB: 7 - 52 kbf  
RPM: 0 - 100  
GPM: 1125 - 1190  
SPP: 3120 - 3540 psi



gy-gnsh gy, dk gy i/p, trnsl, opq i/p, hd-v hd, v crs calc gr, qtz gr i/p, ang-sbang, sbrndd i/p, fri i/p, pr srt, tr foss frag, tr glau, grad to CLCLT, mod cal

**CALCILUTITE:** lt gy-m lt gy, sft, tr glau

Survey @ 888.16 mMDRT  
Incl: 27.56° Azi: 61.95°  
TVD: 831.80 m

**CALCILUTITE:** lt gy-m lt gy, sft, tr glau

Survey @ 917.34 mMDRT  
Incl: 27.22° Azi: 62.80°  
TVD: 857.70 m

**CLAYSTONE:** lt gy-m gy, sft-fm, amor, mod calc-calc

**CALCILUTITE:** lt olv gy, lt gy-m lt gy, sft-fm, amor, grad to slty i/p, tr glau

Survey @ 947.31 mMDRT  
Incl: 27.19° Azi: 62.99°  
TVD: 884.4 m

**CLAYSTONE (5%):** lt gy-m gy, sft-fm, amor, mod calc

**CALCILUTITE:** lt olv gy, lt gy-m lt gy, sft-fm, amor, grad to slty i/p, tr glau

Survey @ 975.78 mMDRT  
Incl: 28.07° Azi: 63.33°  
TVD: 909.60 m

**SAND:** lse qtz gr, trnsl-trnsp, v hd, m-cr gr, sbang-rnnd, slily calc

**CALCARENITE:** wh, lt olv gy-brnsh gy, trnsl, hd-v hd, v f-f gr, m i/p, sbang-ang, pr srt, tr foss frag, tr glau, grad to CLCLT, wl cmt; tr lse sd, m-crs qtz gr

MW: 1.13 sg FV: 40  
PV: 5 YP: 15  
Gels: 10/12/13 PH: 8  
Rmf: 0.1052 @ 19.1°C

CALCILUTITE: wh-olv gy, lt olv gy, sft-fm, sbang, amor, m qtz gr i/p, com f skel frag, slty mtrx, grad to silty i/p

Survey @ 1034.76 mMDRT  
Incl: 27.23° Azi: 63.27°  
TVD: 961.9 m

CALCARENITE: wh, lt olv gy-brnsh gy, trnsl, hd-v hd, vf-f calc gr, m i/p, sbang-ang, pr srt, tr foss frag, tr glau, grad to CLCLT, wl cmt; tr lse sd, m-crs qtz gr

CALCISILTITE: lt olv gy, frm-sft i/p, com v f, slty, m sbang qtz, tr blk flk, tr skel mtrx, arg mat

Survey @ 1064.7 mMDRT  
Incl: 27.88° Azi: 62.07°  
TVD: 988.4 m

CALCILUTITE: wh-olv gy, sft, f-m, tr sbang qtz, com f skel frag, com forams, tr m glau, wk slty mtrx, grad to CLST i/p

CALCARENITE: wh-lt olv gy, brnsh gy, hd-v hd, vf-f gr, m i/p, ang-sbang, tr blk lit, tr foss frag, tr glau, grad to CLCLT, wl cmt; tr qtz gr, trnsl, pl yel-occ or, v crs gr

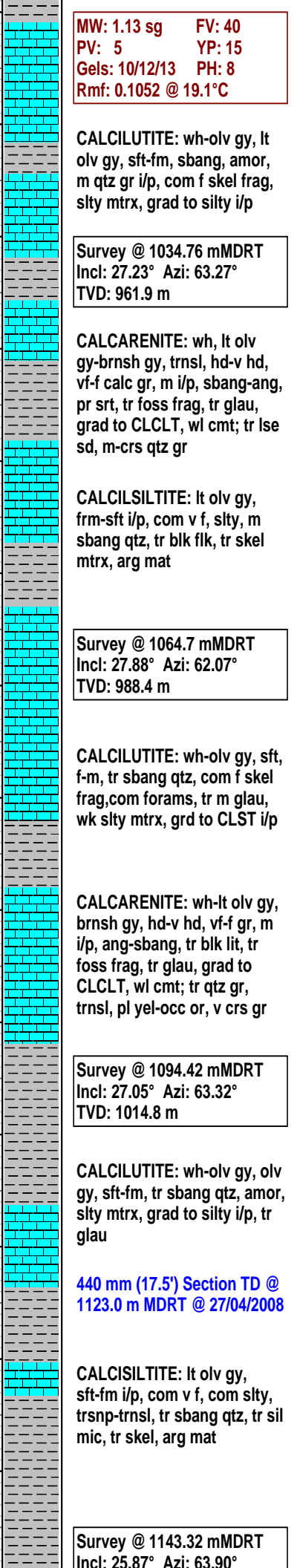
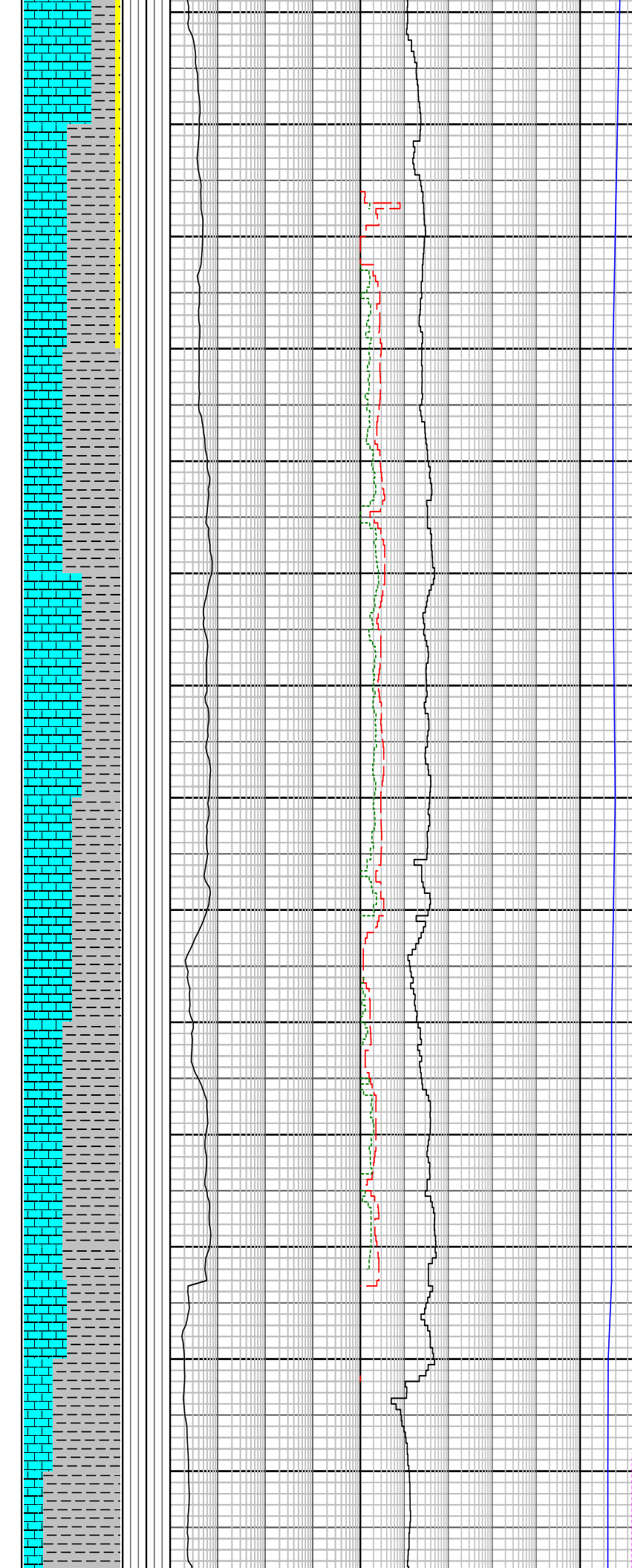
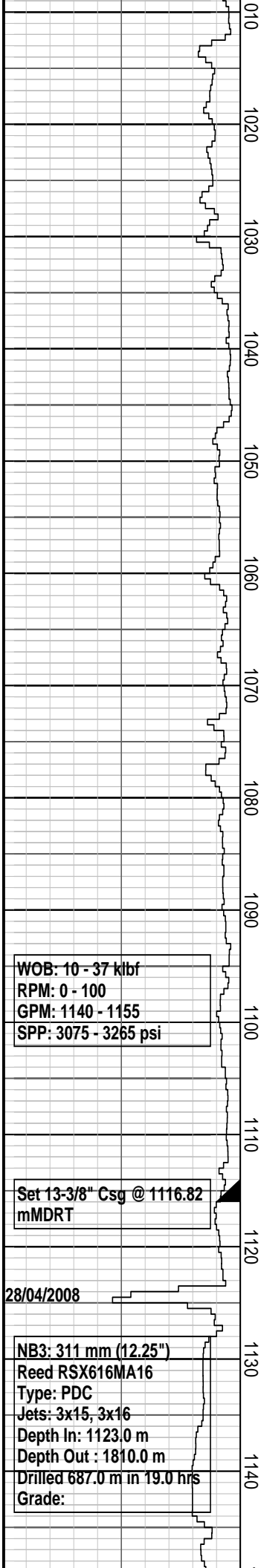
Survey @ 1094.42 mMDRT  
Incl: 27.05° Azi: 63.32°  
TVD: 1014.8 m

CALCILUTITE: wh-olv gy, olv gy, sft-fm, tr sbang qtz, amor, slty mtrx, grad to silty i/p, tr glau

440 mm (17.5') Section TD @ 1123.0 m MDRT @ 27/04/2008

CALCISILTITE: lt olv gy, sft-fm i/p, com v f, com slty, trsnp-trnsl, tr sbang qtz, tr sil mic, tr skel, arg mat

Survey @ 1143.32 mMDRT  
Incl: 25.87° Azi: 63.90°



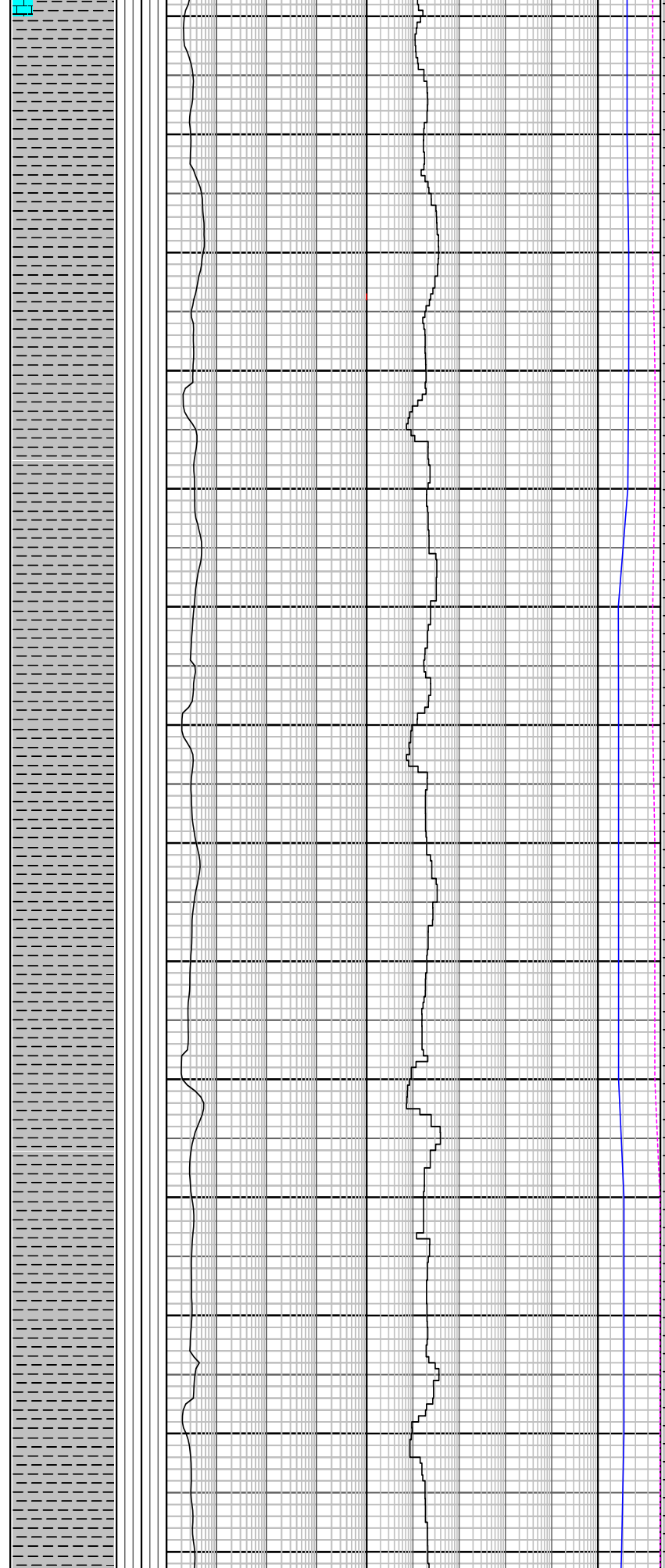
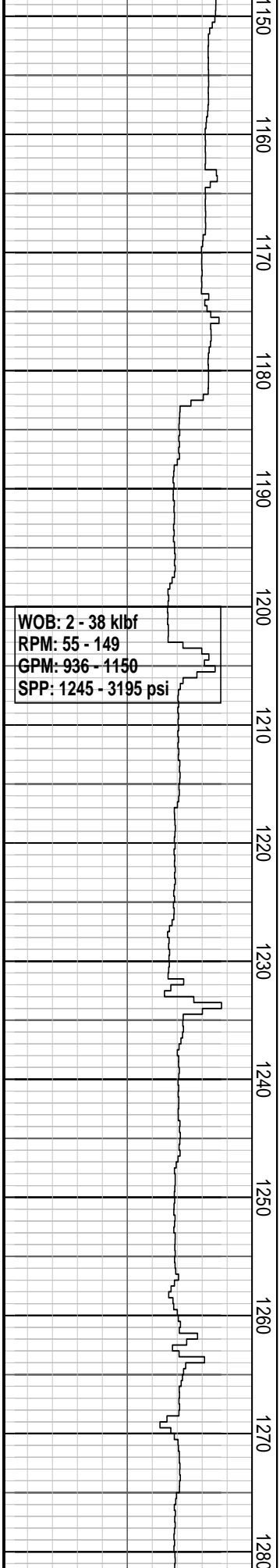
WOB: 10 - 37 kilbf  
RPM: 0 - 100  
GPM: 1140 - 1155  
SPP: 3075 - 3265 psi

Set 13-3/8" Csg @ 1116.82 mMDRT

28/04/2008

NB3: 311 mm (12.25")  
Reed RSX616MA16  
Type: PDC  
Jets: 3x15, 3x16  
Depth In: 1123.0 m  
Depth Out: 1810.0 m  
Drilled 687.0 m in 19.0 hrs  
Grade:





TVD: 1058.6 m

**CALCILUTITE:** m lt gy, grnsh-olv gy, sft-fm, blk, tr blk flk, grad to silty i/p

Survey @ 1184.95 mMDRT  
Incl: 25.36° Azi: 62.41°  
TVD: 1096.2 m

**CALCILUTITE:** m dk gy, olv gy-dk grnsh gy, sft-fm, mod hd, sbbkly, gen loc sity, tr shl frag, tr micro mic, tr carb spk, tr carb CLST

Survey @ 1214.47 mMDRT  
Incl: 26.03° Azi: 61.94°  
TVD: 1122.8 m

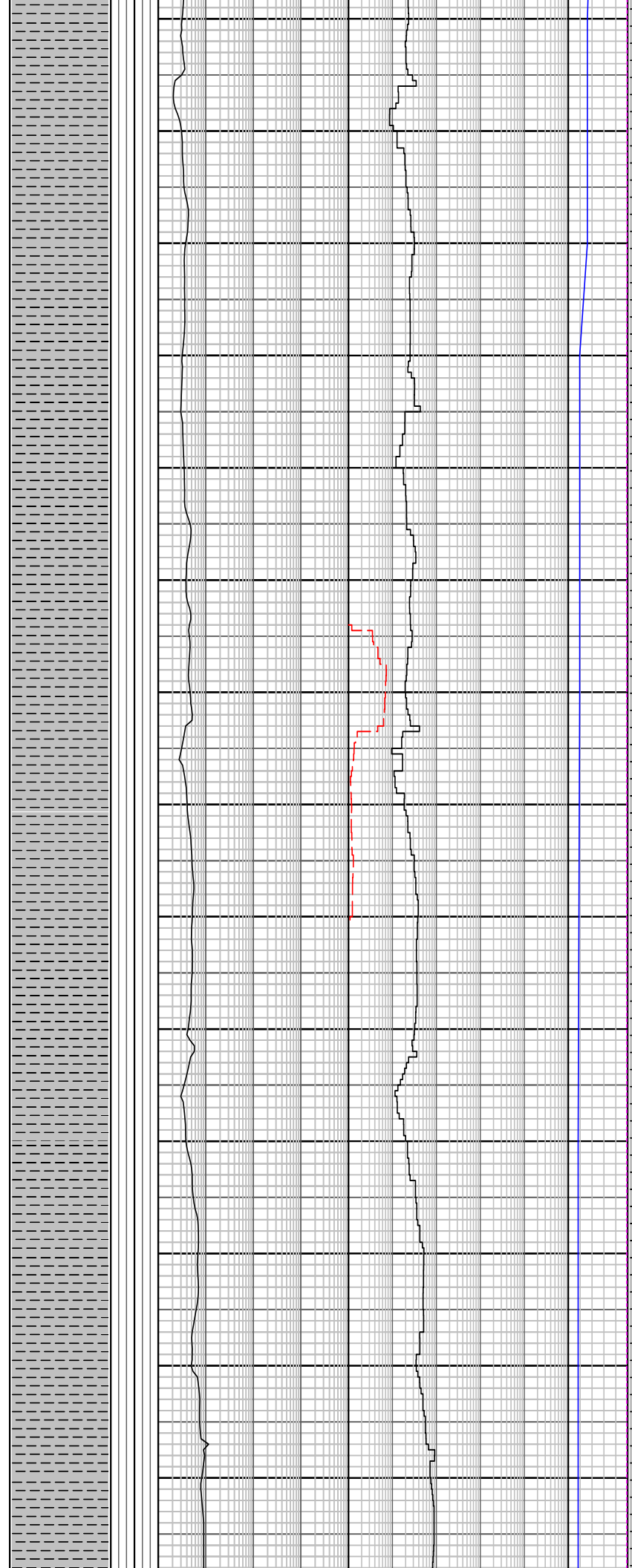
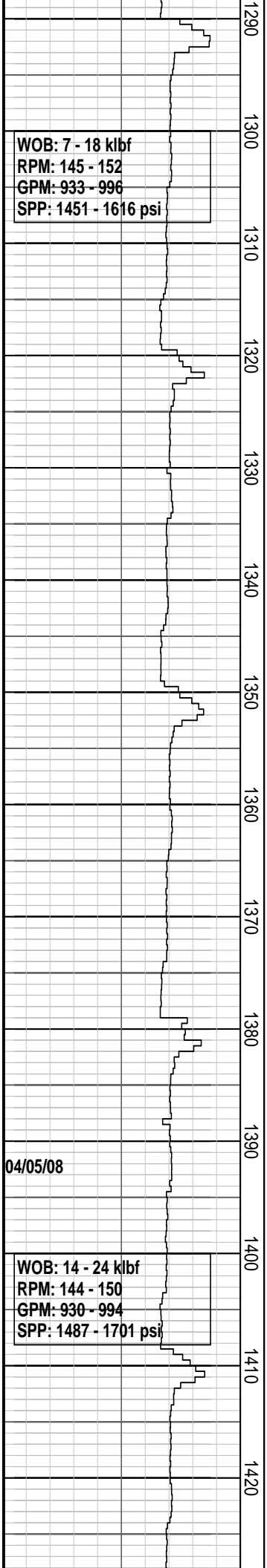
**CALCAREOUS CLAYSTONE:** m gy, olv gy, sft-fm, sbbkly, 40% calc cly, micr mic, tr carb mat

Survey @ 1244.37 mMDRT  
Incl: 26.97° Azi: 60.72°  
TVD: 1149.6 m

**CALCAREOUS CLAYSTONE:** m gy, olv gy, sft-fm, sbbkly, 40% calc cly, micr mic, tr carb mat, tr v f dissem pyr, tr glau

Survey @ 1273.71 mMDRT  
Incl: 27.88° Azi: 59.68°  
TVD: 1175.6 m

**CALCAREOUS CLAYSTONE:** m gy, olv gy, sft-fm, sbbkly, com calc cly, micr mic, tr



carb mat, tr v f disseminated pyrite, tr glau

MW: 1.13 sg FV: 48  
 PV: 11 YP: 16  
 Gels: 10/14/16 PH: 8.5

Survey @ 1303.22 mMDRT  
 Incl: 28.77° Azi: 60.45°  
 TVD: 1201.6 m

Carbide Run @ 1321 mMDRT  
 Theo: 5650 stks  
 Actual: 5800 stks  
 Hole washout: 2.7 %

CALCAREOUS CLAYSTONE:  
 m gy, olv gy, sft-fm, sbbly, 30% calc cly, micr mic, tr carb mat, tr v f disseminated pyrite, tr glau

Survey @ 1333.07 mMDRT  
 Incl: 28.34° Azi: 61.52°  
 TVD: 1227.9 m

CALCAREOUS CLAYSTONE:  
 m gy, olv gy, sft-fm, sbbly, 30% calc cly, micr mic, tr carb mat, tr v f disseminated pyrite, tr glau

Survey @ 1362.30 mMDRT  
 Incl: 28.20° Azi: 62.55°  
 TVD: 1253.7 m

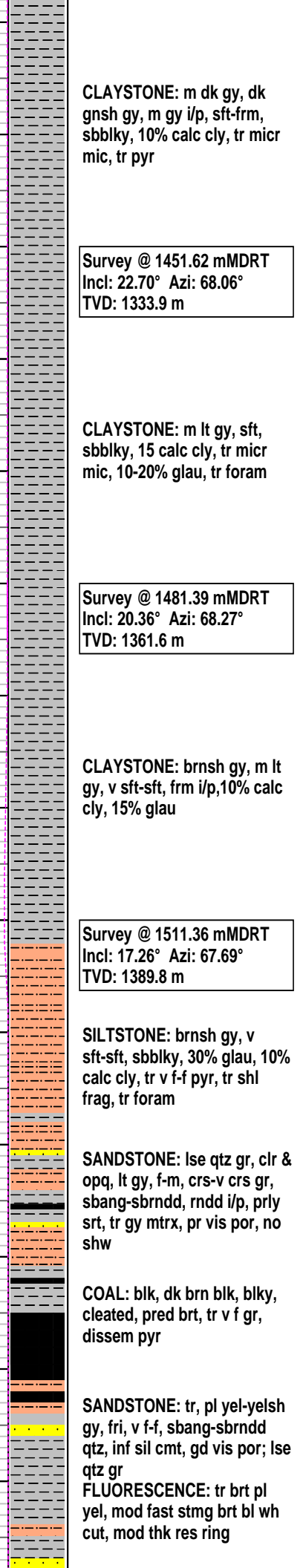
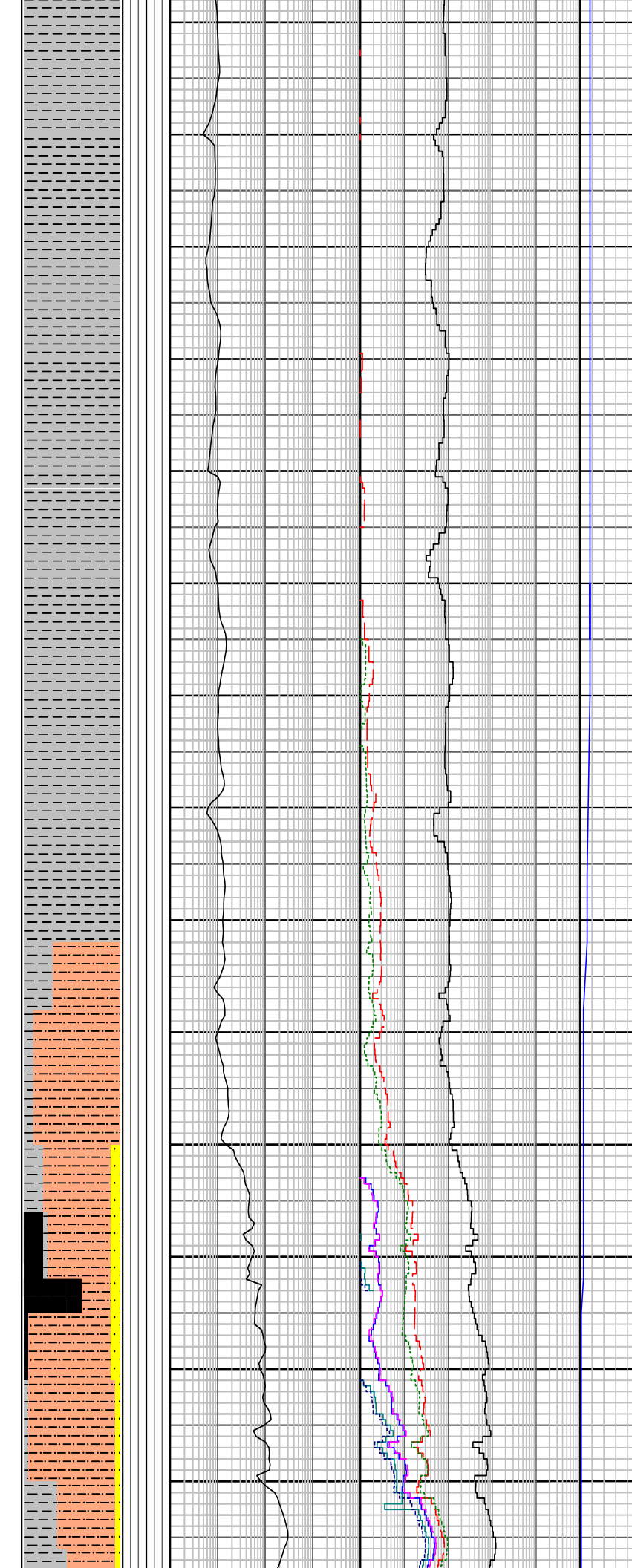
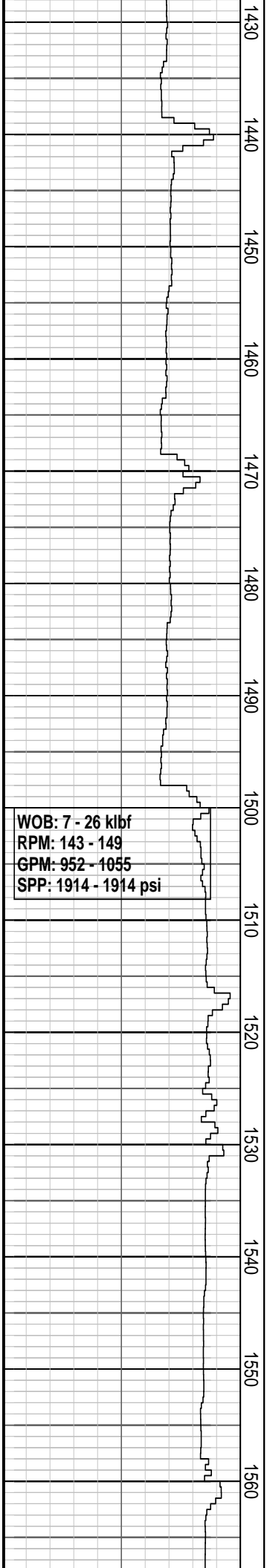
CALCAREOUS CLAYSTONE:  
 m gy, olv gy, sft-fm, sbbly, 30% calc cly, micr mic, tr carb mat, tr v f disseminated pyrite, tr glau

Add CaCO<sub>3</sub> to mud system at 1380.0 mMDRT on 3/5/08 at 2330hrs

Survey @ 1392.46 mMDRT  
 Incl: 27.26° Azi: 63.55°  
 TVD: 1280.4 m

CLAYSTONE: m gy, olv gy, sft-fm, sbbly, 20% calc cly, micr mic, tr carb mat, tr disseminated pyrite, tr glau

Survey @ 1421.70 mMDRT  
 Incl: 25.27° Azi: 66.35°  
 TVD: 1306.6 m



CLAYSTONE: m dk gy, dk gnsht gy, m gy i/p, sft-frm, sbbkly, 10% calc cly, tr micr mic, tr pyr

Survey @ 1451.62 mMDRT  
Incl: 22.70° Azi: 68.06°  
TVD: 1333.9 m

CLAYSTONE: m lt gy, sft, sbbkly, 15 calc cly, tr micr mic, 10-20% glau, tr foram

Survey @ 1481.39 mMDRT  
Incl: 20.36° Azi: 68.27°  
TVD: 1361.6 m

CLAYSTONE: brnsh gy, m lt gy, v sft-sft, frm i/p, 10% calc cly, 15% glau

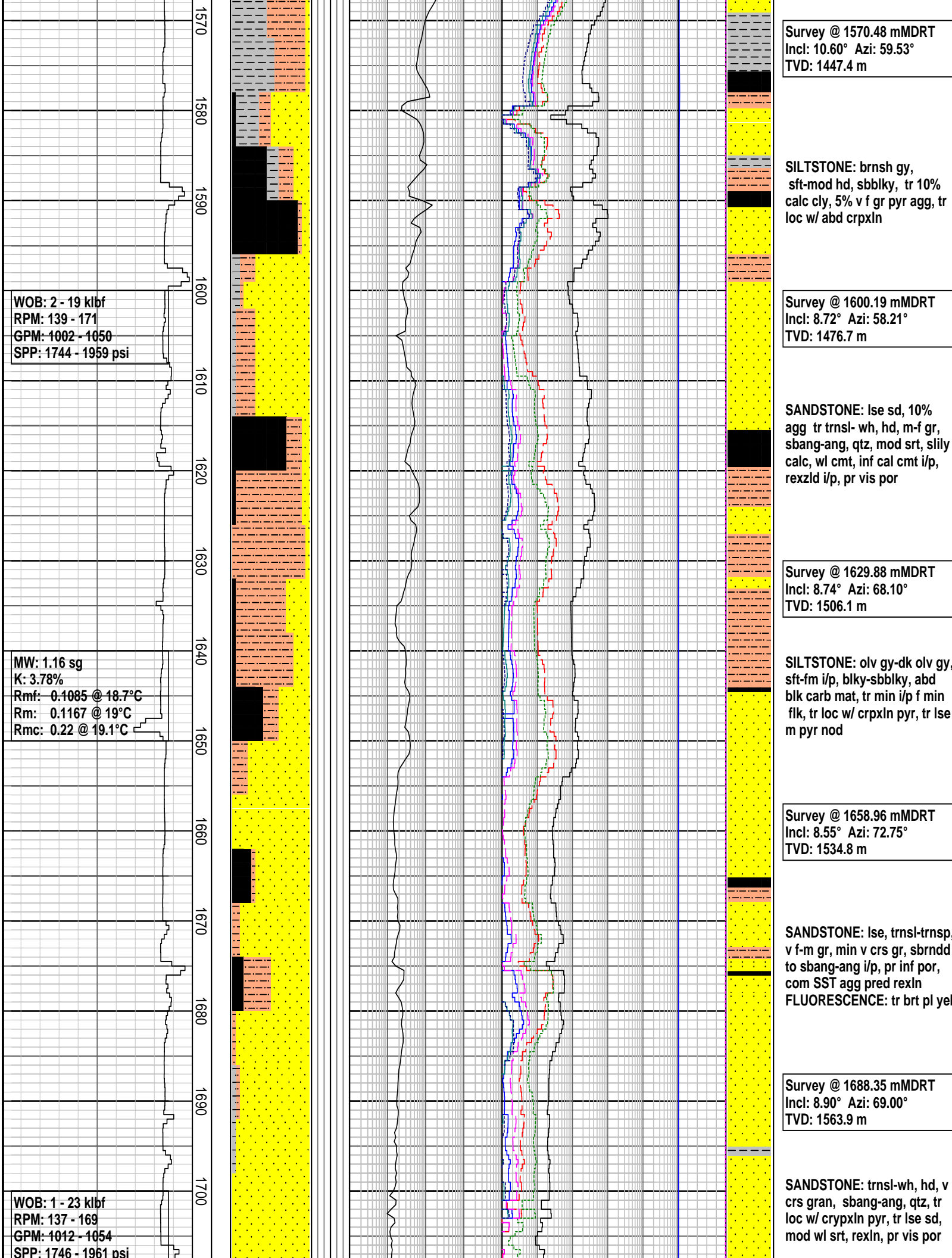
Survey @ 1511.36 mMDRT  
Incl: 17.26° Azi: 67.69°  
TVD: 1389.8 m

SILTSTONE: brnsh gy, v sft-sft, sbbkly, 30% glau, 10% calc cly, tr v f-f pyr, tr shl frag, tr foram

SANDSTONE: lse qtz gr, clr & opq, lt gy, f-m, crs-v crs gr, sbang-sbrndd, rndd i/p, prly srt, tr gy mtrx, pr vis por, no shw

COAL: blk, dk brn blk, blk, cleated, pred brt, tr v f gr, dissemin pyr

SANDSTONE: tr, pl yel-yelsh gy, fri, v f-f, sbang-sbrndd qtz, inf sil cmt, gd vis por; lse qtz gr  
FLUORESCENCE: tr brt pl yel, mod fast stmg brt bl wh cut, mod thk res ring



WOB: 2 - 19 klbf  
 RPM: 139 - 171  
 GPM: 1002 - 1050  
 SPP: 1744 - 1959 psi

MW: 1.16 sg  
 K: 3.78%  
 Rmf: 0.1085 @ 18.7°C  
 Rm: 0.1167 @ 19°C  
 Rmc: 0.22 @ 19.1°C

WOB: 1 - 23 klbf  
 RPM: 137 - 169  
 GPM: 1012 - 1054  
 SPP: 1746 - 1961 psi

Survey @ 1570.48 mMDRT  
 Incl: 10.60° Azi: 59.53°  
 TVD: 1447.4 m

SILTSTONE: brnsh gy,  
 sft-mod hd, sbbiky, tr 10%  
 calc cly, 5% v f gr pyr agg, tr  
 loc w/ abd crpxln

Survey @ 1600.19 mMDRT  
 Incl: 8.72° Azi: 58.21°  
 TVD: 1476.7 m

SANDSTONE: lse sd, 10%  
 agg tr trnsl- wh, hd, m-f gr,  
 sbang-ang, qtz, mod srt, slily  
 calc, wl cmt, inf cal cmt i/p,  
 rexlz i/p, pr vis por

Survey @ 1629.88 mMDRT  
 Incl: 8.74° Azi: 68.10°  
 TVD: 1506.1 m

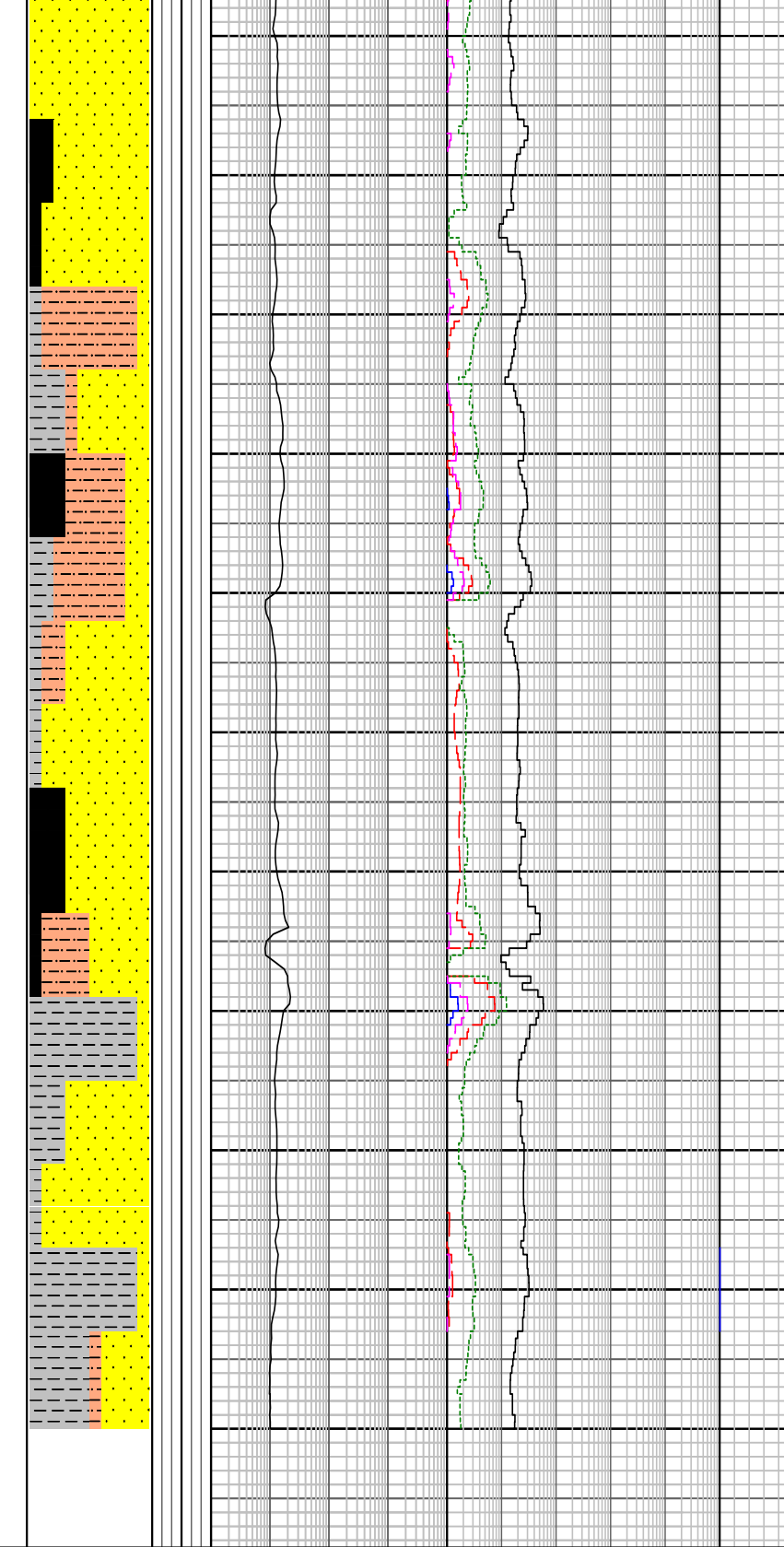
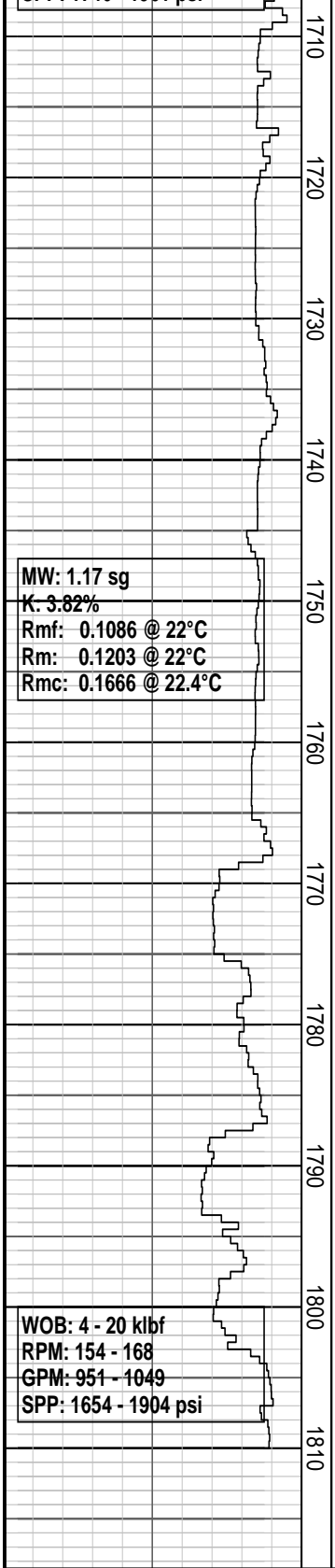
SILTSTONE: olv gy-dk olv gy,  
 sft-fm i/p, blk-sbbiky, abd  
 blk carb mat, tr min i/p f min  
 flk, tr loc w/ crpxln pyr, tr lse  
 m pyr nod

Survey @ 1658.96 mMDRT  
 Incl: 8.55° Azi: 72.75°  
 TVD: 1534.8 m

SANDSTONE: lse, trnsl-trnsp,  
 v f-m gr, min v crs gr, sbrndd  
 to sbang-ang i/p, pr inf por,  
 com SST agg pred rexl  
 FLUORESCENCE: tr brt pl yel

Survey @ 1688.35 mMDRT  
 Incl: 8.90° Azi: 69.00°  
 TVD: 1563.9 m

SANDSTONE: trnsl-wh, hd, v  
 crs gran, sbang-ang, qtz, tr  
 loc w/ crpxln pyr, tr lse sd,  
 mod wl srt, rexl, pr vis por



FLUORESCENCE: tr brt pl yel, v slw stmg brt bl wh cut, mod thn wk res ring

Survey @ 1717.96 mMDRT  
 Incl: 8.56° Azi: 61.34°  
 TVD: 1593.1 m

CLAYSTONE: med dk gy, frm, sbbkly, micrmic

SILTSTONE: olv gy, pl yelsh brn, sft, amor-sbbkly, tr carb mat

Survey @ 1747.50 mMDRT  
 Incl: 8.59° Azi: 54.77°  
 TVD: 1622.3 m

SANDSTONE: lt gy, dk yelsh brn, pred op, i/p clr, pred lse qtz, i/p hd when rexln, crs-gran, pred v crs-gran, ang-sb rndd, mod srt, 5% sil cmt, wh cly mtrx wh/out, inf fr-gd vis por  
 FLUORESCENCE: dk brn blk stn on sm gr surf

Survey @ 1777.39 mMDRT  
 Incl: 8.68° Azi: 54.87°  
 TVD: 1651.9 m

SANDSTONE: lt gy, op, i/p clr, lse qtz gr, pred m gr, grad f gr to gran, sbang-sbrndd, mod srt, cly mtrx w/out, tr v f gr pyr agg cmt, inf fr vis por, no show

CLAYSTONE: lt olv gy, lt gy, m gy, sft-fm, sbbkly, micrmic, r carb mat, tr dissemin pyr

West Seahorse-3 reached TD depth of 1810.0 mMDRT at 1900hrs on 04/05/2008

### FORMATION EVALUATION LOG

Drilling Rate		TVDRT meters	Cuttings Lithology	Visual Inferred Porosity	Gas Data		Chromatograph Data		Calcmetry	Interpreted Lithology	Lithology Description
ROP (m/hr)	MD meters 1:500				Gas Hydrocarbon Avg %	Methane ppm	Ethane ppm	Propane ppm			
20	220				1	100000	1	100000	CaCO3 %		
40	240				1	100000	1	100000	MgCO3 %		
60	260				1	100000	1	100000			
80	280				1	100000	1	100000			
100	300				1	100000	1	100000			
120	320				1	100000	1	100000			
140	340				1	100000	1	100000			
160	360				1	100000	1	100000			
180	380				1	100000	1	100000			
200	400				1	100000	1	100000			

