



Company : 3D Oil Ltd

Well : West Seahorse-3

Interval : 70.00 - 1046.36 meters

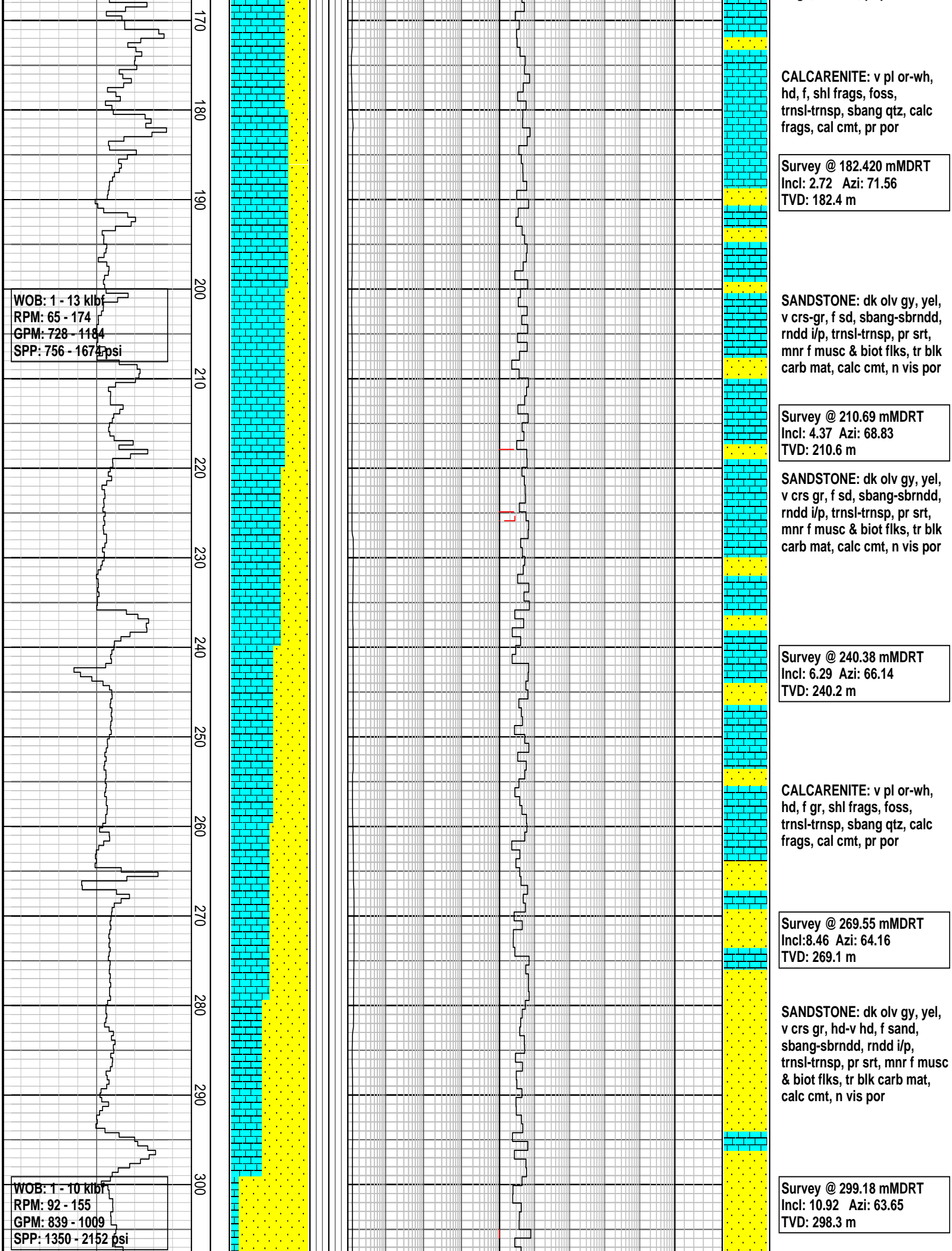
Created : 27/Apr/2008 11:45:38 PM

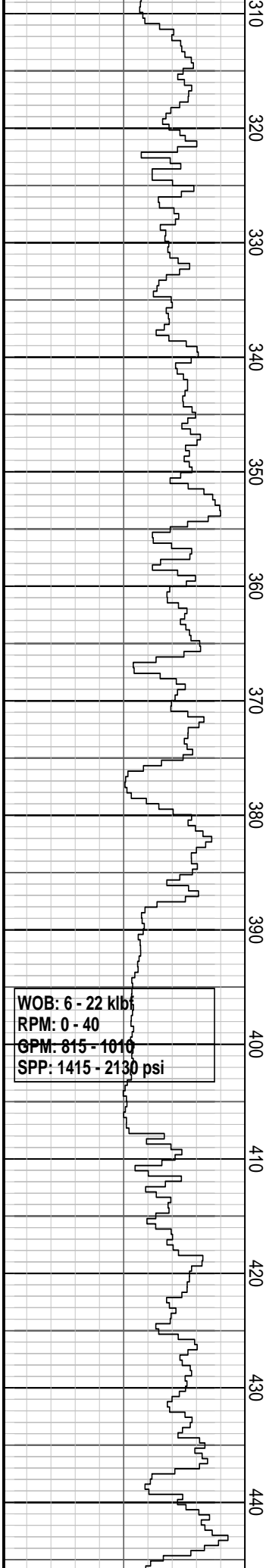


INTEQ

### FORMATION EVALUATION LOG

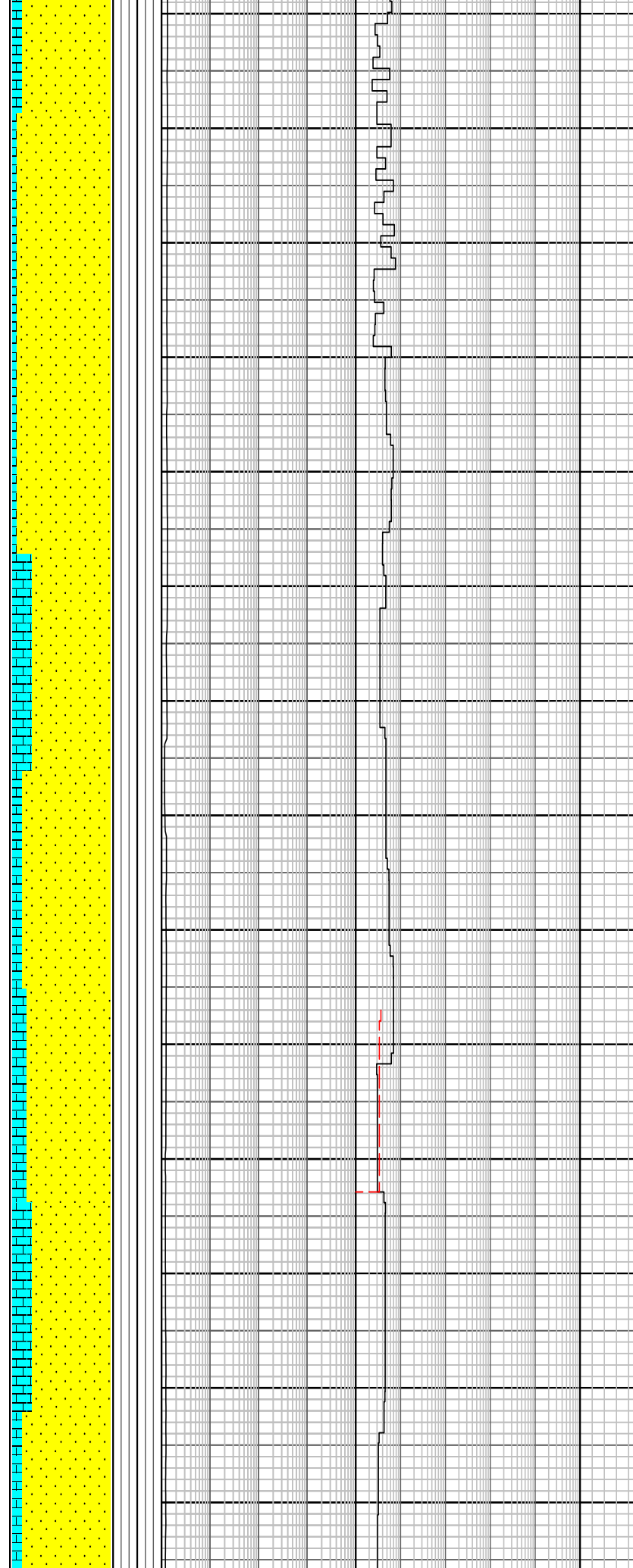
Drilling Rate		TVD meters	TVDRT meters	Cuttings Lithology	Oil Show	Visual Inferred Porosity	Gas Data	Chromatograph Data	Calcmetry	Interpreted Lithology	Lithology Description
ROP (m/hr)	ROP (m/hr)						Gas Hydrocarbon Avg %	Methane ppm			
200	20	0					0.01   0.1   1   10	1   Ethane ppm   100000			
180	40	80						1   Propane ppm   100000			
160	60	90						1   iso-Butane ppm   100000			
140	80	100						1   n-Butane ppm   100000			
120	100	110						1   iso-Pentane ppm   100000			
100	120	120						1   n-Pentane ppm   100000			
80	140	130									
60	160	140									
40	180	150									
20	200	160									
	220	170									
	240	180									
	260	190									
	280	200									
	300	210									
	320	220									
	340	230									
	360	240									
	380	250									
	400	260									
<p>NB1: 660 mm (26") with 914 mm (36") Hole Opener            Reed            Type: Rock Y11C            Jets: 3x22, 1x16            Depth In: 77.5m            Depth Out: 125.0m            Drilled 47.5m in 2.3hrs            Grade: 0-0-RR-NO-NO-NO-T</p>											
<p>Set 30" x 20" Csg @ 122.0 mMDRT</p>											
<p>25/04/2008</p>											
<p>WOB: 5 - 12 klbf            RPM: 64            GPM: 593 - 1026            SPP: 182 - 698 psi</p>											
<p>NB2: 440 (17.5") Hughes            Type: MXL-T1V            Jets: 3x20            Depth In: 125.0 m            Depth Out: 1123.0 m            Drilled 998.0 m in 27.8hrs            Grade:</p>											
<p>RT - AHD: 38.0 mMDRT            Water depth : 39.5 mMDRT            RT - Seabed: 77.5 mMDRT</p>											
<p>Spud West Seahorse-3 at 0415hrs on 23/04/2008</p>											
<p>Drill with sea water and hi-vis pills, returns to seabed from 77.5 m to 125.0 mMDRT</p>											
<p>914 mm (36") Section TD @ 125.0 mMDRT on 24/04/2008</p>											
<p>MW: 1.03 sg FV: 39            PV: 4 YP: 14            Gels: 9/13/15 pH: 8</p>											
<p>SANDSTONE: or, yel, v crs gr, sbang-sbrndd, rndd i/p, trnsl-trnsp, pr srt, mnr f musc &amp; biot flk, tr blk carb mat</p>											
<p>Survey @ 154.20 mMDRT            Incl: 0.83 Azi: 65.83            TVD: 154.2 m</p>											
<p>CALCARENITE: v pl or-wh, hd, f gr, shl frags, foss, trnsl-trnsp, sbang qtz, calc frags, cal cmt, pr por</p>											





WOB: 6 - 22 klb  
 RPM: 0 - 40  
 GPM: 815 - 1010  
 SPP: 1415 - 2130 psi

310  
320  
330  
340  
350  
360  
370  
380  
390  
400  
410  
420  
430  
440



**SANDSTONE:** lt olv gy, yel, f - m crs gr, trnsl-trnsp, hd-v hd, sbang-sbrnidd, rndd i/p, lse sand, pr srt, mnr f musc & biot flks, tr blk carb mat, v calc, pr cmt, n vis por

Survey @ 328.48 mMDRT  
 Incl: 13.50 Azi: 62.30  
 TVD: 326.90 m

**CALCARENITE:** v pl, or-wh, med hd-hd, f-m shl frags, foss, trnsl-trnsp, sbang qtz, calc frags, cal cmt, pr por

Survey @ 358.59 mMDRT  
 Incl: 18.96 Azi: 63.33  
 TVD: 355.80 m

**SANDSTONE:** lt olv gy-olv gy, yel, trnsl-trnsp, f-m crs gr, crs gr i/p, hd-v hd, sbang-sbrnidd, rndd i/p, lse sand, pr srt, tr blk carb mat, v calc, pr cmt, n vis por

**CALCARENITE:** v pl, or-wh, med hd-hd, f-m shl frags, foss, trnsl-trnsp, sbang qtz, calc frags, cal cmt, pr por

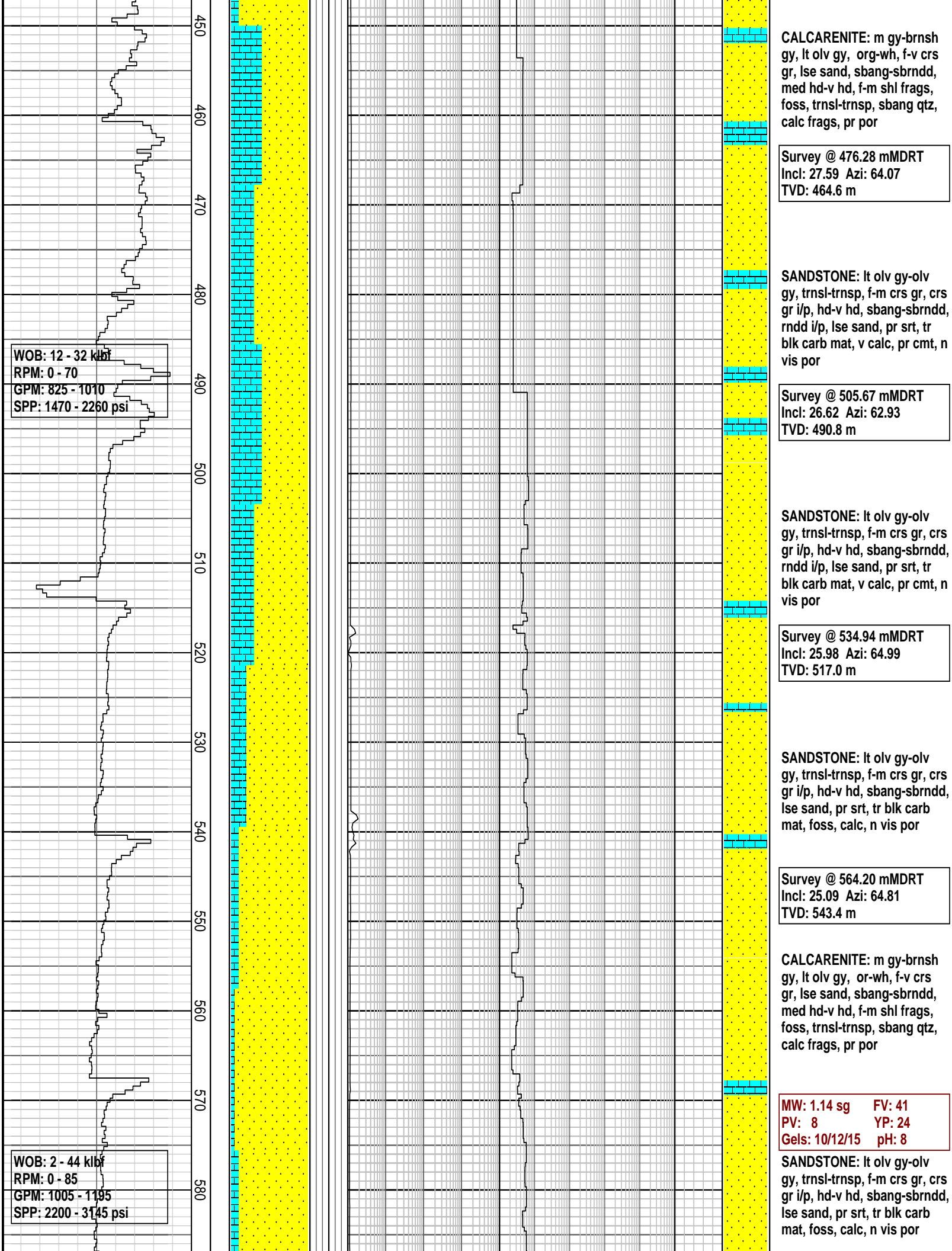
Survey @ 388.46 mMDRT  
 Incl: 17.84 Azi: 64.65  
 TVD: 384.30 m

MW: 1.11 sg FV: 40  
 PV: 4 YP: 14  
 Gels: 9/13/15 pH: 8

Survey @ 417.21 mMDRT  
 Incl: 21.76 Azi: 64.94  
 TVD: 411.4 m

**SANDSTONE:** lt olv gy-olv gy, yel, trnsl-trnsp, f-m crs gr, crs gr i/p, hd-v hd, sbang-sbrnidd, rndd i/p, lse sand, pr srt, tr blk carb mat, v calc, pr cmt, n vis por

Survey @ 446.30 mMDRT  
 Incl: 26.49 Azi: 63.72  
 TVD: 437.9 m



WOB: 12 - 32 klbf  
 RPM: 0 - 70  
 GPM: 825 - 1010  
 SPP: 1470 - 2260 psi

WOB: 2 - 44 klbf  
 RPM: 0 - 85  
 GPM: 1005 - 1195  
 SPP: 2200 - 3145 psi

**CALCARENITE:** m gy-brnsh gy, lt olv gy, org-wh, f-v crs gr, lse sand, sbang-sbrnnd, med hd-v hd, f-m shl frags, foss, trnsl-trnsp, sbang qtz, calc frags, pr por

Survey @ 476.28 mMDRT  
 Incl: 27.59 Azi: 64.07  
 TVD: 464.6 m

**SANDSTONE:** lt olv gy-olv gy, trnsl-trnsp, f-m crs gr, crs gr i/p, hd-v hd, sbang-sbrnnd, rndd i/p, lse sand, pr srt, tr blk carb mat, v calc, pr cmt, n vis por

Survey @ 505.67 mMDRT  
 Incl: 26.62 Azi: 62.93  
 TVD: 490.8 m

**SANDSTONE:** lt olv gy-olv gy, trnsl-trnsp, f-m crs gr, crs gr i/p, hd-v hd, sbang-sbrnnd, rndd i/p, lse sand, pr srt, tr blk carb mat, v calc, pr cmt, n vis por

Survey @ 534.94 mMDRT  
 Incl: 25.98 Azi: 64.99  
 TVD: 517.0 m

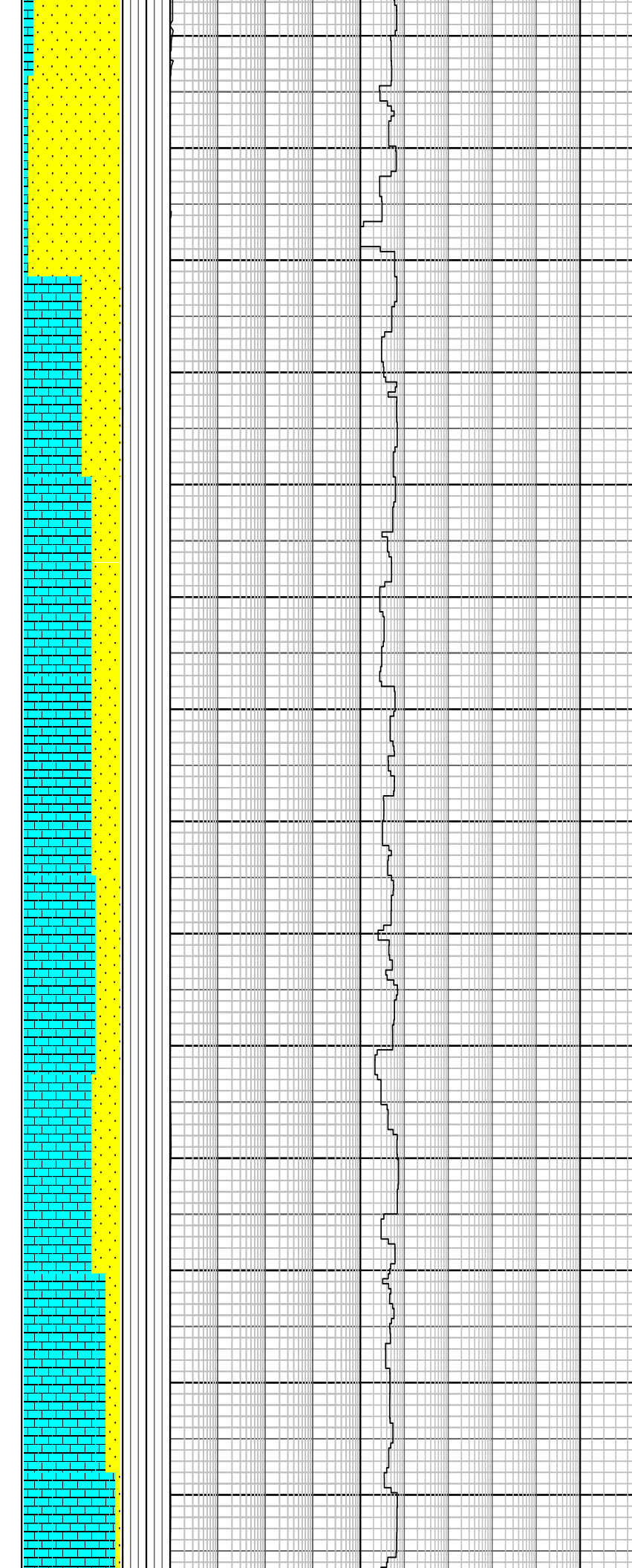
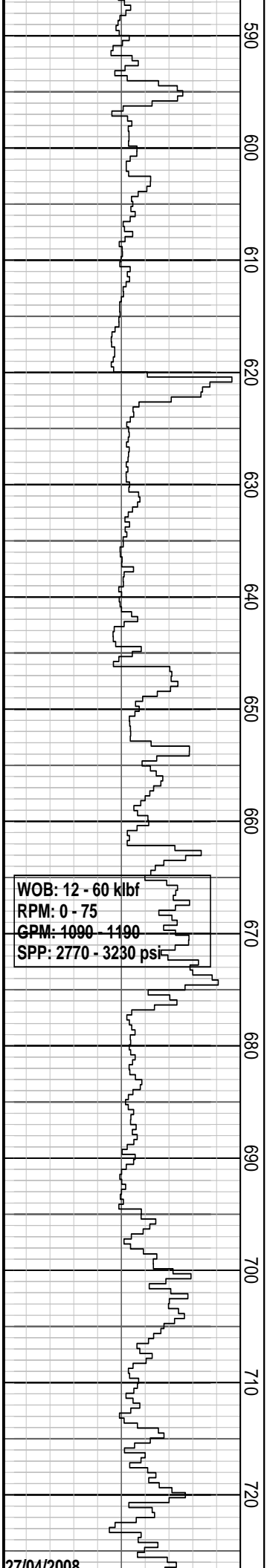
**SANDSTONE:** lt olv gy-olv gy, trnsl-trnsp, f-m crs gr, crs gr i/p, hd-v hd, sbang-sbrnnd, lse sand, pr srt, tr blk carb mat, foss, calc, n vis por

Survey @ 564.20 mMDRT  
 Incl: 25.09 Azi: 64.81  
 TVD: 543.4 m

**CALCARENITE:** m gy-brnsh gy, lt olv gy, or-wh, f-v crs gr, lse sand, sbang-sbrnnd, med hd-v hd, f-m shl frags, foss, trnsl-trnsp, sbang qtz, calc frags, pr por

MW: 1.14 sg FV: 41  
 PV: 8 YP: 24  
 Gels: 10/12/15 pH: 8

**SANDSTONE:** lt olv gy-olv gy, trnsl-trnsp, f-m crs gr, crs gr i/p, hd-v hd, sbang-sbrnnd, lse sand, pr srt, tr blk carb mat, foss, calc, n vis por



Survey @ 622.88 mMDRT  
 Incl: 26.34 Azi: 65.72  
 TVD: 596.3 m

SANDSTONE: v lt gy-olv gy, trnsl-trnsp, f-v crs gr, hd-v hd, sbang-sbrndd, lse sand, pr srt, tr blk carb mat, foss, calc, n vis por

Survey @ 653.06 mMDRT  
 Incl: 26.88 Azi: 63.47  
 TVD: 623.3 m

CALCARENITE: m gy-brnsh gy, m olv gy, wh, m-v crs gr, lse sand, sbang-rndd, med hd-hd, shell frags, foss, trnsl-trnsp, lse qtz, calc-v frags, m cmt, pr por

Survey @ 682.2 mMDRT  
 Incl: 27.67 Azi: 62.3  
 TVD: 649.2 m

SANDSTONE: v lt gy-olv gy, trnsl-trnsp, f-v crs gr, hd-v hd, sbang-sbrndd, lse sand, pr srt, tr blk carb mat, foss, calc, n vis por

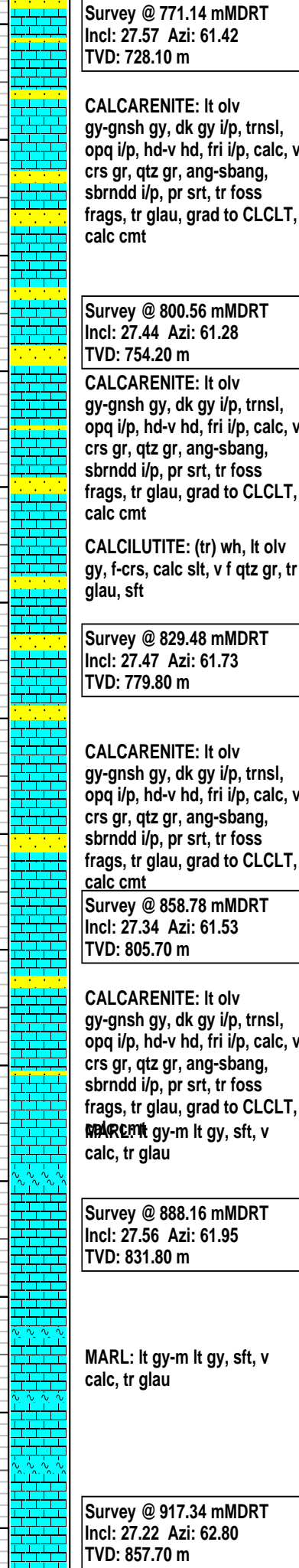
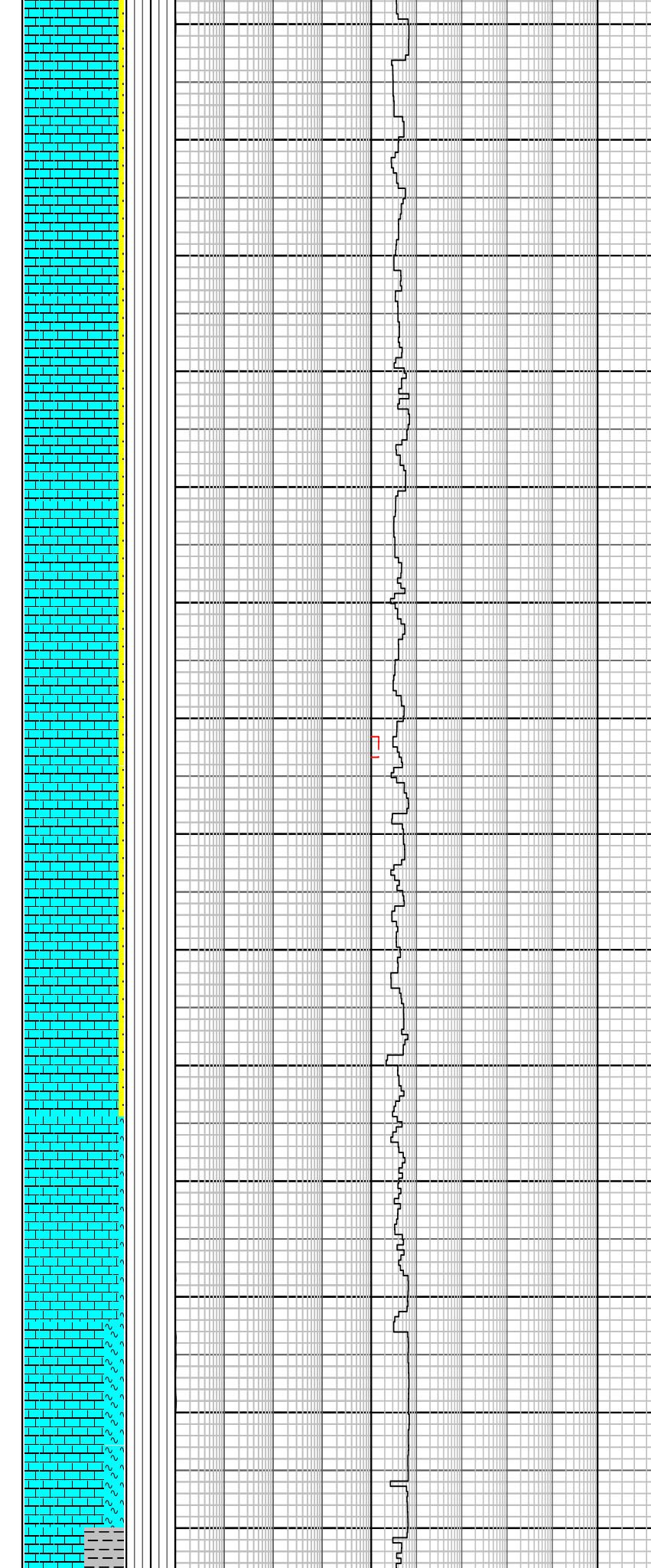
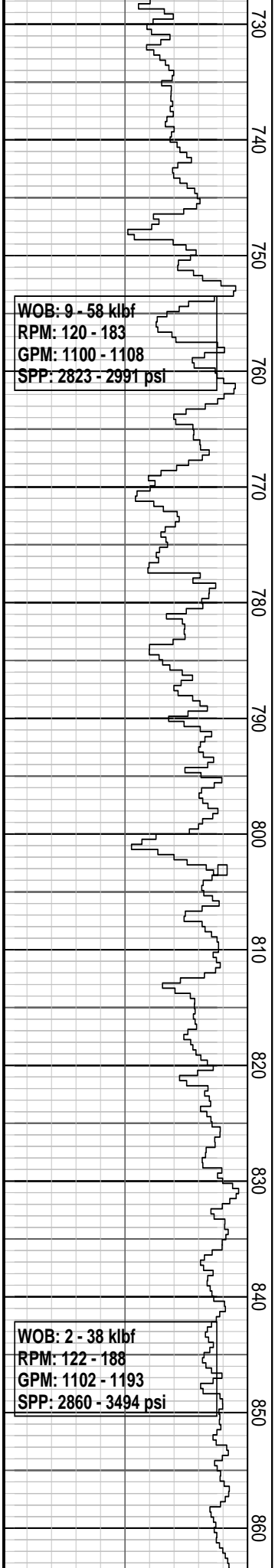
Survey @ 711.65 mMDRT  
 Incl: 27.35 Azi: 62.78  
 TVD: 675.3 m

SANDSTONE: v lt gy-olv gy, trnsl-trnsp, f-v crs gr, hd-v hd, sbang-sbrndd, lse sand, pr srt, tr blk carb mat, foss, calc, n vis por

Survey @ 740.89 mMDRT  
 Incl: 27.59 Azi: 61.96  
 TVD: 701.2 m

CALCARENITE: lt olv gy-gnsh gy, trnsl, opq i/p, hd-v hd, fri i/p, calc, v crs gr, qtz gr, ang-sbang, sbrndd i/p, pr srt, tr foss frags, tr glau, calc cmt

MW: 1.10 sg FV: 48  
 PV: 8 YP: 24  
 Gels: 10/12/15 pH: 8.5



Survey @ 771.14 mMDRT  
 Incl: 27.57 Azi: 61.42  
 TVD: 728.10 m

**CALCARENITE:** lt olv gy-gnsh gy, dk gy i/p, trnsl, opq i/p, hd-v hd, fri i/p, calc, v crs gr, qtz gr, ang-sbang, sbrndd i/p, pr srt, tr foss frags, tr glau, grad to CLCLT, calc cmt

Survey @ 800.56 mMDRT  
 Incl: 27.44 Azi: 61.28  
 TVD: 754.20 m

**CALCARENITE:** lt olv gy-gnsh gy, dk gy i/p, trnsl, opq i/p, hd-v hd, fri i/p, calc, v crs gr, qtz gr, ang-sbang, sbrndd i/p, pr srt, tr foss frags, tr glau, grad to CLCLT, calc cmt

**CALCILUTITE:** (tr) wh, lt olv gy, f-crs, calc slit, v f qtz gr, tr glau, sft

Survey @ 829.48 mMDRT  
 Incl: 27.47 Azi: 61.73  
 TVD: 779.80 m

**CALCARENITE:** lt olv gy-gnsh gy, dk gy i/p, trnsl, opq i/p, hd-v hd, fri i/p, calc, v crs gr, qtz gr, ang-sbang, sbrndd i/p, pr srt, tr foss frags, tr glau, grad to CLCLT, calc cmt

Survey @ 858.78 mMDRT  
 Incl: 27.34 Azi: 61.53  
 TVD: 805.70 m

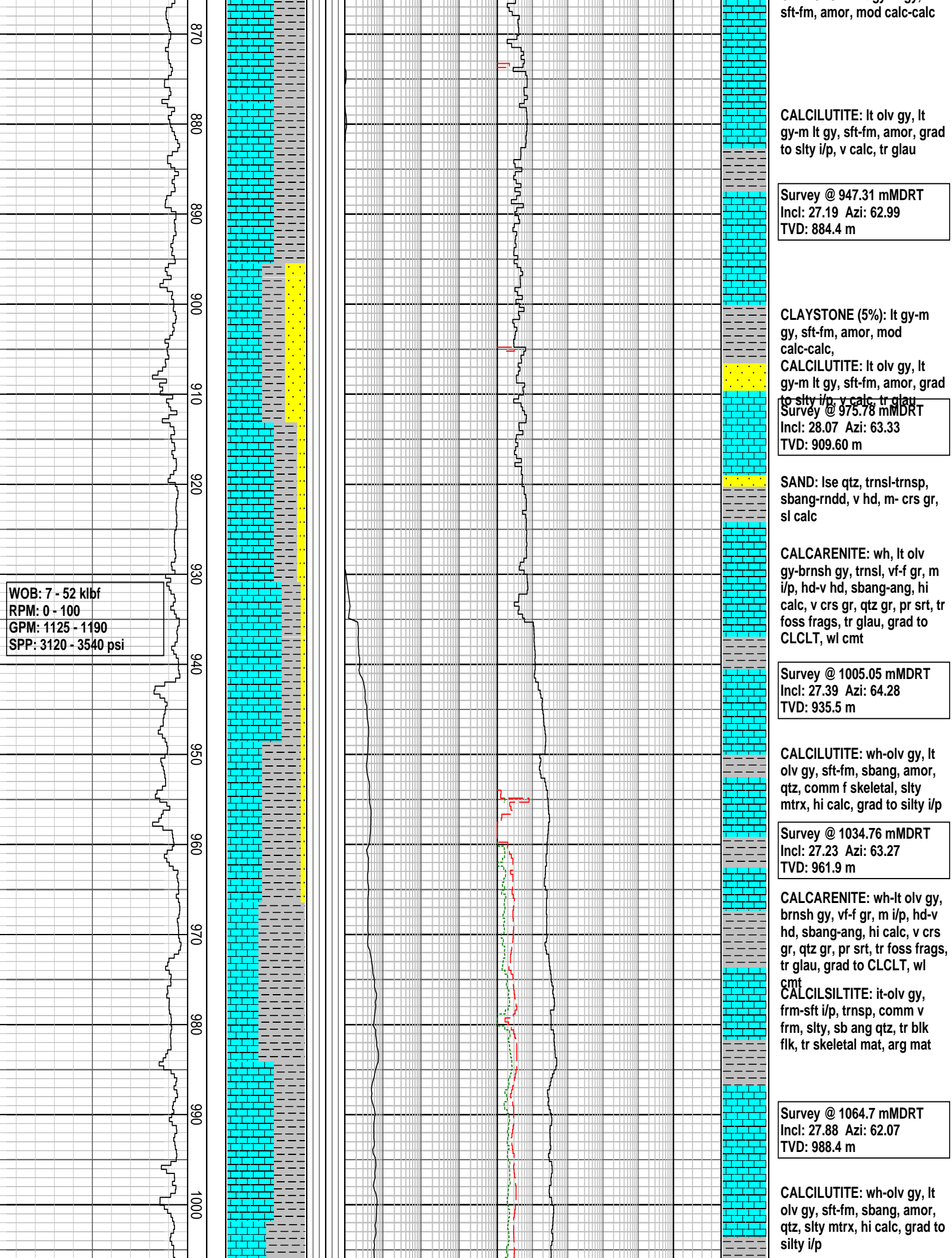
**CALCARENITE:** lt olv gy-gnsh gy, dk gy i/p, trnsl, opq i/p, hd-v hd, fri i/p, calc, v crs gr, qtz gr, ang-sbang, sbrndd i/p, pr srt, tr foss frags, tr glau, grad to CLCLT, calc cmt

Survey @ 888.16 mMDRT  
 Incl: 27.56 Azi: 61.95  
 TVD: 831.80 m

**MARL:** lt gy-m lt gy, sft, v calc, tr glau

Survey @ 917.34 mMDRT  
 Incl: 27.22 Azi: 62.80  
 TVD: 857.70 m

**CLAYSTONE:** lt av-m av.



sft-fm, amor, mod calc-calc

CALCILUTITE: lt olv gy, lt gy-m lt gy, sft-fm, amor, grad to slty i/p, v calc, tr glau

Survey @ 947.31 mMDRT  
 Incl: 27.19 Azi: 62.99  
 TVD: 884.4 m

CLAYSTONE (5%): lt gy-m gy, sft-fm, amor, mod calc-calc,  
 CALCILUTITE: lt olv gy, lt gy-m lt gy, sft-fm, amor, grad to slty i/p, v calc, tr glau  
 Survey @ 975.78 mMDRT  
 Incl: 28.07 Azi: 63.33  
 TVD: 909.60 m

SAND: lse qtz, trnsl-trnsp, sbang-rndd, v hd, m- crs gr, sl calc

CALCARENITE: wh, lt olv gy-brnsh gy, trnsl, vf-f gr, m i/p, hd-v hd, sbang-ang, hi calc, v crs gr, qtz gr, pr srt, tr foss frags, tr glau, grad to CLCLT, wl cmt

Survey @ 1005.05 mMDRT  
 Incl: 27.39 Azi: 64.28  
 TVD: 935.5 m

CALCILUTITE: wh-olv gy, lt olv gy, sft-fm, sbang, amor, qtz, comm f skeletal, slty mtrx, hi calc, grad to silty i/p

Survey @ 1034.76 mMDRT  
 Incl: 27.23 Azi: 63.27  
 TVD: 961.9 m

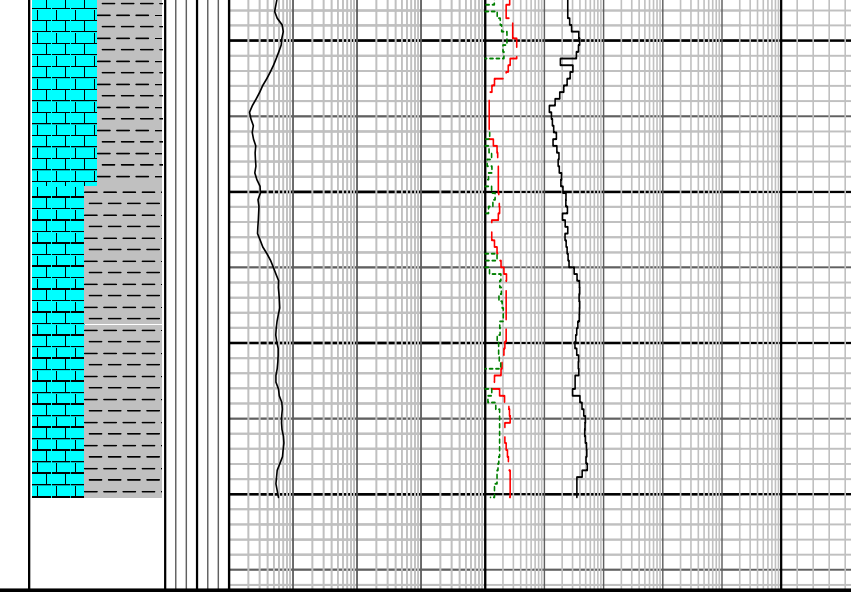
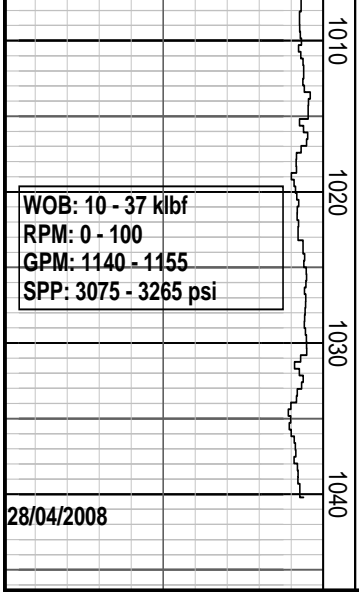
CALCARENITE: wh-lt olv gy, brnsh gy, vf-f gr, m i/p, hd-v hd, sbang-ang, hi calc, v crs gr, qtz gr, pr srt, tr foss frags, tr glau, grad to CLCLT, wl cmt  
 CALCILSILTITE: it-olv gy, frm-sft i/p, trnsp, comm v frm, slty, sb ang qtz, tr blk flk, tr skeletal mat, arg mat

Survey @ 1064.7 mMDRT  
 Incl: 27.88 Azi: 62.07  
 TVD: 988.4 m

CALCILUTITE: wh-olv gy, lt olv gy, sft-fm, sbang, amor, qtz, slty mtrx, hi calc, grad to silty i/p

WOB: 7 - 52 klf  
 RPM: 0 - 100  
 GPM: 1125 - 1190  
 SPP: 3120 - 3540 psi

870  
880  
890  
900  
910  
920  
930  
940  
950  
960  
970  
980  
990  
1000



**CALCARENITE:** wh-lt olv gy, brnsh gy, vf-f gr, m i/p, hd-v hd, sbang-ang, hi calc, v crs gr, qtz gr, pr srt, tr foss frags, tr glau, grad to CLCLT, wl cmt

Survey @ 1094.42 mMDRT  
 Incl: 27.05 Azi: 63.32  
 TVD: 1014.8 m

**CALCILUTITE:** wh-olv gy, olv gy, sft-fm, amor, slty mtrx, hi calc, grad to silty i/p

440 mm (17.5') Section TD @ 1123.0 m MDRT @ 27/04/2008

### FORMATION EVALUATION LOG

Drilling Rate		TVD meters	TVD meters	Cuttings Lithology	Oil Show	Visual Inferred Porosity	Gas Data	Chromatograph Data	Calcmery	Interpreted Lithology	Lithology Description	
ROP (m/hr)	Gas Hydrocarbon Avg %						Methane ppm					
20	0.01	1:500			PFG	PFG	1	100000				
40	0.1						1	Ethane ppm				100000
60	1						1	Propane ppm				100000
80	10						1	iso-Butane ppm				100000
100							1	n-Butane ppm				100000
120							1	iso-Pentane ppm				100000
140			n-Pentane ppm	100000								
160												
180												
200												