

Schlumberger

Company: **Esso Australia Pty Ltd**

Well: **WEST KINGFISH W9A**

Field: **WEST KINGFISH**

Rig: **Rig 175**      Country: **Australia**

Rig: <b>Rig 175</b> Field: <b>WEST KINGFISH</b> Location: <b>Bass Strait</b> Well: <b>WEST KINGFISH W9A</b> Company: <b>Esso Australia Pty Ltd</b>	<b>PGGT-D -GR, CCI</b>			
	<b>Max-R Setting Record</b>			
	<b>4-Jan-2010</b>			
	LOCATION			
	Bass Strait Gippsland		Elev.:	K.B.    41.70 m G.L.    -77.00 m D.F.    41.73 m
Permanent Datum: <u>MSL</u>		Elev.:	<u>0.00 m</u>	
Log Measured From: <u>Drill Floor</u>		41.73 m    above Perm. Datum		
Drilling Measured From: <u>Drill Floor</u>				
State: <u>Victoria</u>		Max. Well Deviation	Longitude	
Victoria		57 deg	148°6'19.93423"E	
			Latitude	
			38° 35' 34.84865" S	
Logging Date		4-Jan-2010		
Run Number		One		
Depth Driller		3703 m		
Schlumberger Depth		3578m		
Bottom Log Interval		3672.5 m		
Top Log Interval		20 m		
Casing Fluid Type		Brine		
Salinity				
Density		8.55 g/cm3		
Fluid Level		0 m		
BIT/CASING/TUBING STRING				
Bit Size		8.500 in		
From		923.1 m		
To		3703 m		
Casing/Tubing Size		7.000 in		
Weight		26 lbm/ft		
Grade		L-80		
From		20.3 m		
To		3703 m		
Maximum Recorded Temperatures		211 degF		
Logger On Bottom		Time	4-Jan-2010    8:18	
Unit Number	Location	3829	AUSL	
Recorded By		M. Pratt, J. Hollingworth		
Witnessed By		M. Cullicut, D. Daniels		

PVT DATA	Oil Density	Run 1
	Water Salinity	
	Gas Gravity	
	Bo	
	Bw	
	1/Bg	
	Bubble Point Pressure	
	Bubble Point Temperature	
	Solution GOR	
	Maximum Deviation	57 deg
CEMENTING DATA		
Primary/Squeeze	Primary	
Casing String No		
Lead Cement Type		
Volume		
Density		
Water Loss		
Additives		
Tail Cement Type		
Volume		
Density		
Water Loss		
Additives		
Expected Cement Top		
Logging Date		
Run Number		
Depth Driller		
Schlumberger Depth		
Bottom Log Interval		
Top Log Interval		
Casing Fluid Type		
Salinity		
Density		
Fluid Level		
BIT/CASING/TUBING STRING		
Bit Size		
From		
To		
Casing/Tubing Size		
Weight		
Grade		
From		
To		
Maximum Recorded Temperatures		
Logger On Bottom	Time	
Unit Number	Location	
Recorded By		
Witnessed By		

## DEPTH SUMMARY LISTING

Date Created: 4-JAN-2010 18:02:26

### Depth System Equipment

Depth Measuring Device		Tension Device		Logging Cable	
Type:	IDW-E	Type:	CMTD-B/A	Type:	7-46ZV XS
Serial Number:	1173	Serial Number:	1173	Serial Number:	708145
Calibration Date:	09-SEP-2009	Calibration Date:	03-JAN-2010	Length:	6650 M
Calibrator Serial Number:	300286	Calibrator Serial Number:	300286		
Calibration Cable Type:	7-46ZV XS	Number of Calibration Points:	10	Conveyance Method:	Wireline
Wheel Correction 1:	-4	Calibration RMS:	14	Rig Type:	Offshore Fixed
Wheel Correction 2:	-1	Calibration Peak Error:	26		

### Depth Control Parameters

Log Sequence:	Subsequent Log In the Well
Reference Log Name:	WKF_W9A_200MD-RM_LOG_VISION_Service_FIELD PRINT. PNG
Reference Log Run Number:	ID14_OC_26
Reference Log Date:	02-JAN-2009

### Depth Control Remarks

1. IDW used as primary depth control
2. First log in well. Schlumberger depth control procedures applied.
3. All logs zeroed at drill floor.
4. Log correlated to PNG Log provided by the client EXXON Mobil.
5.
6.

#### DISCLAIMER

THE USE OF AND RELIANCE UPON THIS RECORDED-DATA BY THE HEREIN NAMED COMPANY (AND ANY OF ITS AFFILIATES, PARTNERS, REPRESENTATIVES, AGENTS, CONSULTANTS AND EMPLOYEES) IS SUBJECT TO THE TERMS AND CONDITIONS AGREED UPON BETWEEN SCHLUMBERGER AND THE COMPANY, INCLUDING: (a) RESTRICTIONS ON USE OF THE RECORDED-DATA; (b) DISCLAIMERS AND WAIVERS OF WARRANTIES AND REPRESENTATIONS REGARDING COMPANY'S USE OF AND RELIANCE UPON THE RECORDED-DATA; AND (c) CUSTOMER'S FULL AND SOLE RESPONSIBILITY FOR ANY INFERENCE DRAWN OR DECISION MADE IN CONNECTION WITH THE USE OF THIS RECORDED-DATA.

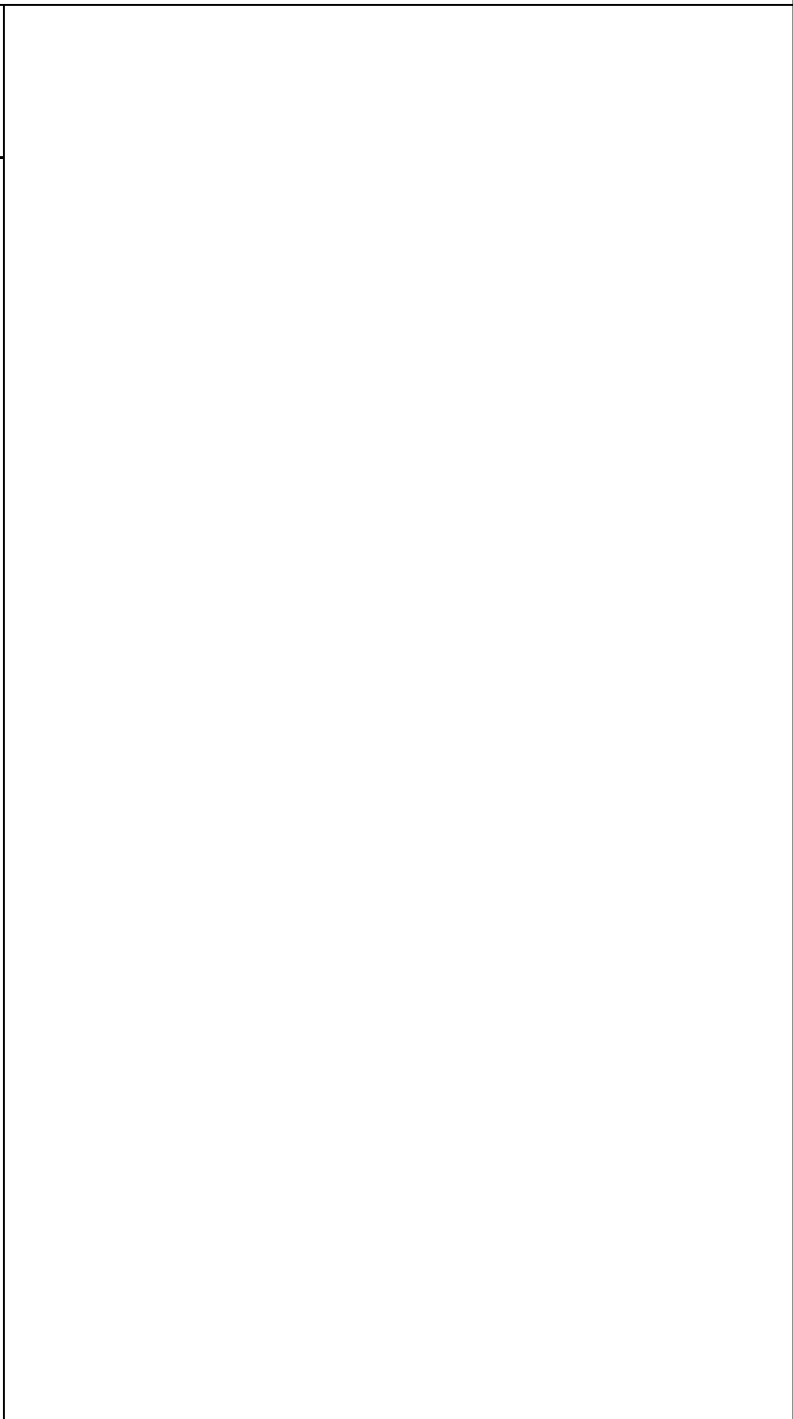
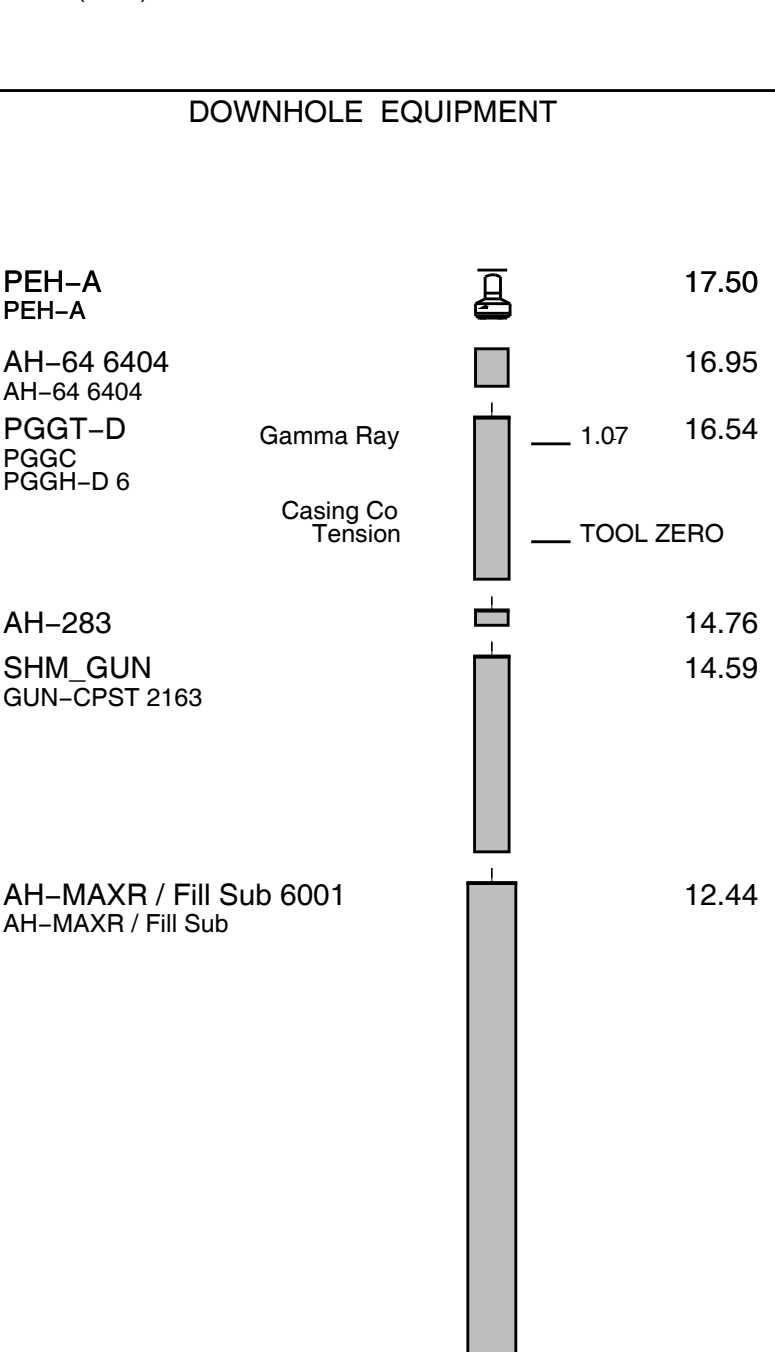
OTHER SERVICES1		OTHER SERVICES2	
OS1:	None	OS1:	
OS2:		OS2:	
OS3:		OS3:	
OS4:		OS4:	
OS5:		OS5:	
REMARKS: RUN NUMBER 1		REMARKS: RUN NUMBER 2	
Log correlated to PNG log provided by client EXXON Mobil.			
Objective:RIH with Max-R perforating assembly with 4-1/2" HSD 12 SPF, 135/45 deg			
phased perforating gun fitted with Powerjet OMEGA charges.			
RIH with the MaxR, HSD perforating gun assembly, PGGT – D, correlate			
and set Maxr assembly with the Top shot to be @ 3565.5m – 3567.0m MDRT, POOH.			

Max-R:
Zone: 3565.5 – 3567.0m MDRT
CCL to Top shot: 11.66m
CCL stop depth: 3553.84m MDRT
Perforation logs not corresponding due to playback of the correlation log
to ensure we where on depth. No changes where made between logs.
Secure Initiated
Schlumberger crew:
Days: B. Glover, A. Pratt
Nights: M. Hancock, S. Lansbury

RUN 1			RUN 2		
SERVICE ORDER #:			SERVICE ORDER #:		
PROGRAM VERSION:			PROGRAM VERSION:		
FLUID LEVEL:			FLUID LEVEL:		
LOGGED INTERVAL	START	STOP	LOGGED INTERVAL	START	STOP

EQUIPMENT DESCRIPTION					
RUN 1			RUN 2		

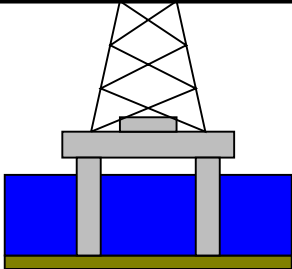
SURFACE EQUIPMENT		
WITM (SHM)		



Percentage of respondents who believe the current government is responsible	Percentage of respondents who believe the current government is responsible
0	0
10	10
20	20
30	30
40	40
50	50
60	60
70	70
80	85
90	90
100	100

TOOL BOTTOM

MAXIMUM STRING DIAMETER 5.00 IN  
MEASUREMENTS RELATIVE TO TOOL ZERO  
ALL LENGTHS IN METERS

Production String			Well Schematic			Casing String
	(in)	(m)		(m)	(in)	
	OD	ID	MD	OD	ID	
RT to Casing Head Flange RT to MSL  Mean Sea Level to Sea bed			20.58 41.7  77			
				13.375		Surface Casing
				923.1	13.375	Shoe

[illegible]

## Job Events Summary

MAXIS Field Log

## Schlumberger Job Event Summary

	Time	Elapsed Time	Depth (M)	File
Log Pass (up)	5-Jan-2010 2:42	000:05	3577.9 - 3532.9	PERFO_087LUP
Log Pass (up)	5-Jan-2010 2:55	000:16	3577.9 - 3443.3	PERFO_089LUP

MAXIS Field Log

Company: Esso Australia Pty Ltd

Well: WEST KINGFISH W9A

## Output DLIS Files

DEFAULT

PERFO\_089LUP

FN:93

PRODUCER

05-Jan-2010 02:55

3577.9 M

3443.3 M

## OP System Version: 17C0-154

SHM\_GUN

17C0-154

PGGT-D

17C0-154

## PIP SUMMARY

☒ Time Mark Every 60 S

## Casing Collar Locator (CCL)

-19 (----) 1

Gamma Ray (GR)

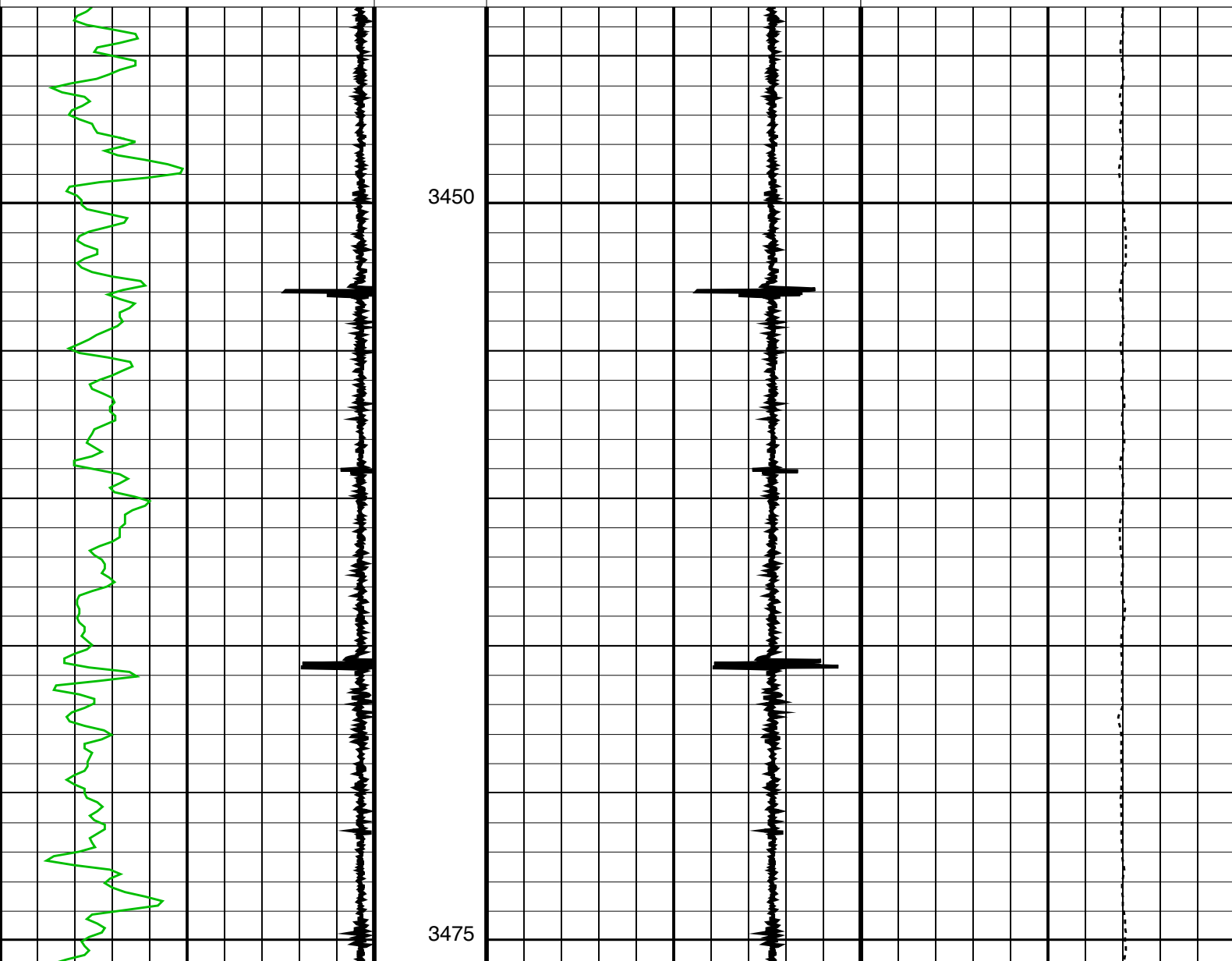
0 (GAPI) 150

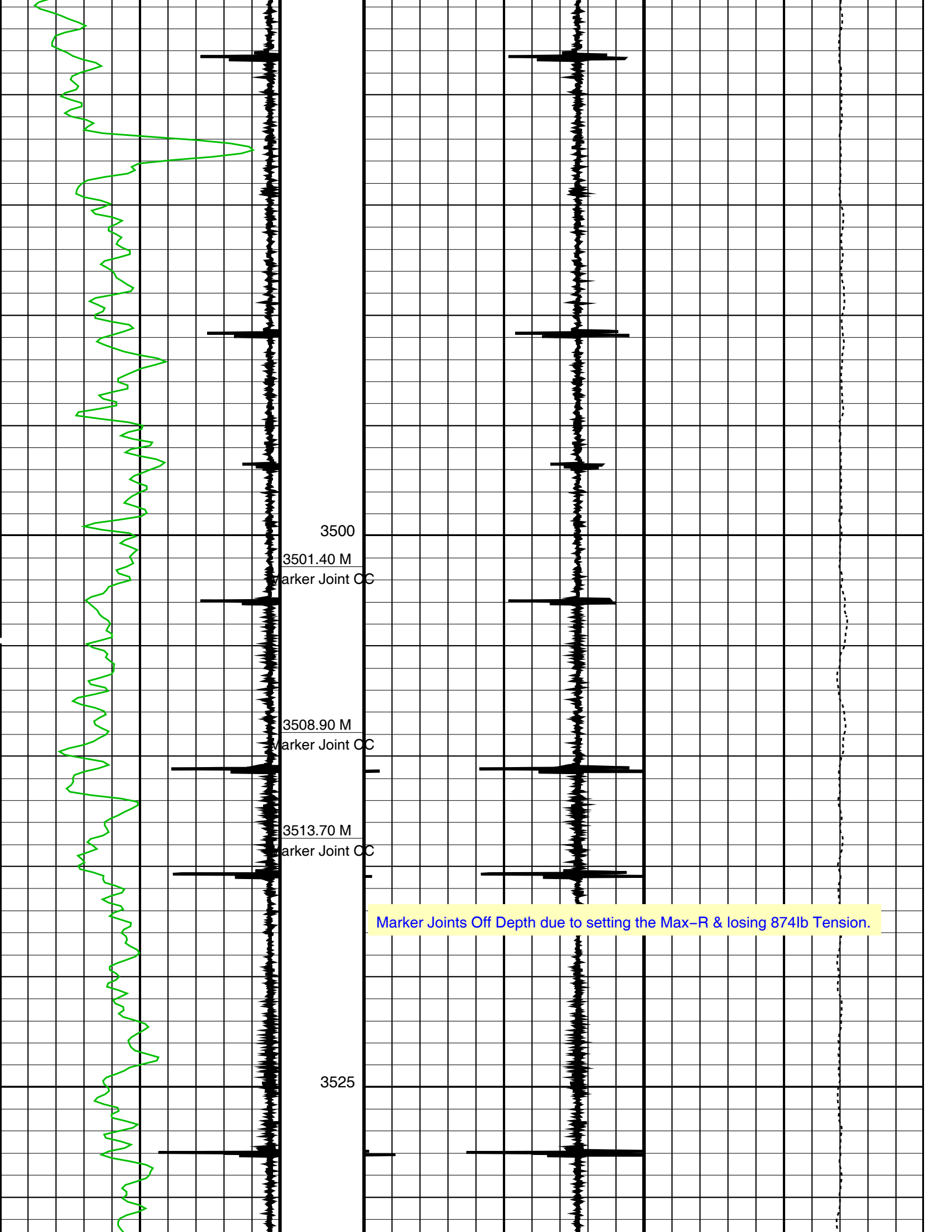
Shifted Casing Collar Locator (SCCL)

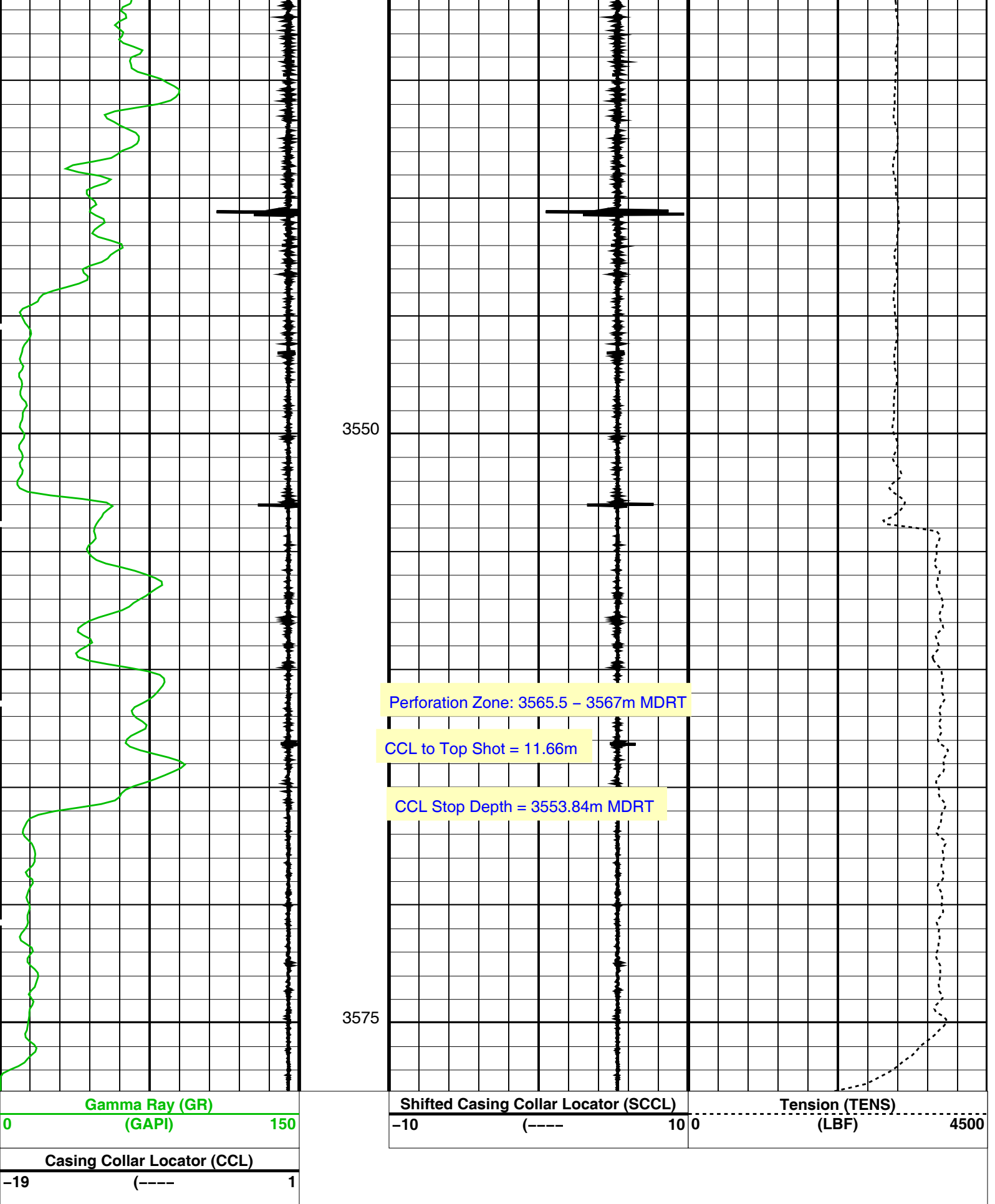
-10 (----) 10

Tension (TENS)

0 (LBF) 4500



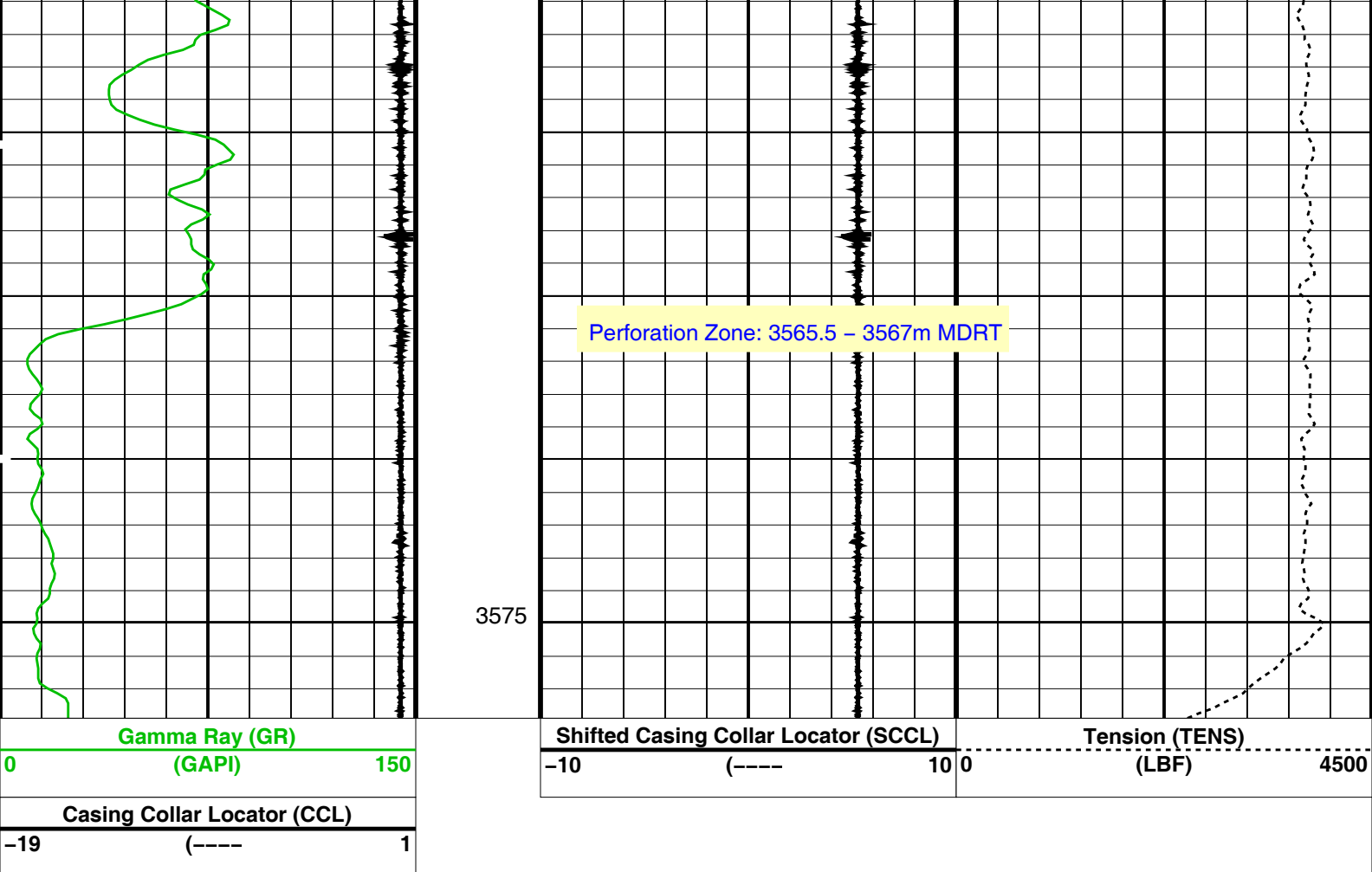




### PIP SUMMARY







#### PIP SUMMARY

Time Mark Every 60 S

Format: PERFO Vertical Scale: 1:200

Graphics File Created: 05-Jan-2010 02:42

OP System Version: 17C0-154

SHM\_GUN 17C0-154 PGGT-D 17C0-154

#### Output DLIS Files

DEFAULT PERFO\_087LUP FN:91 PRODUCER 05-Jan-2010 02:42

Company: **Esso Australia Pty Ltd**

**Schlumberger**

Well: **WEST KINGFISH W9A**

Field: **WEST KINGFISH**

Rig: **Rig 175**

Country: **Australia**

PGGT-D -GR, CCL  
Max-R Setting Record  
4-Jan-2010