



**GEOFRAME
PROCESSED
INTERPRETATION**

Wasabi-1 QC Plot – SonicVision

(16" section)

* A Mark of Schlumberger

Using the following logs: SonicVision

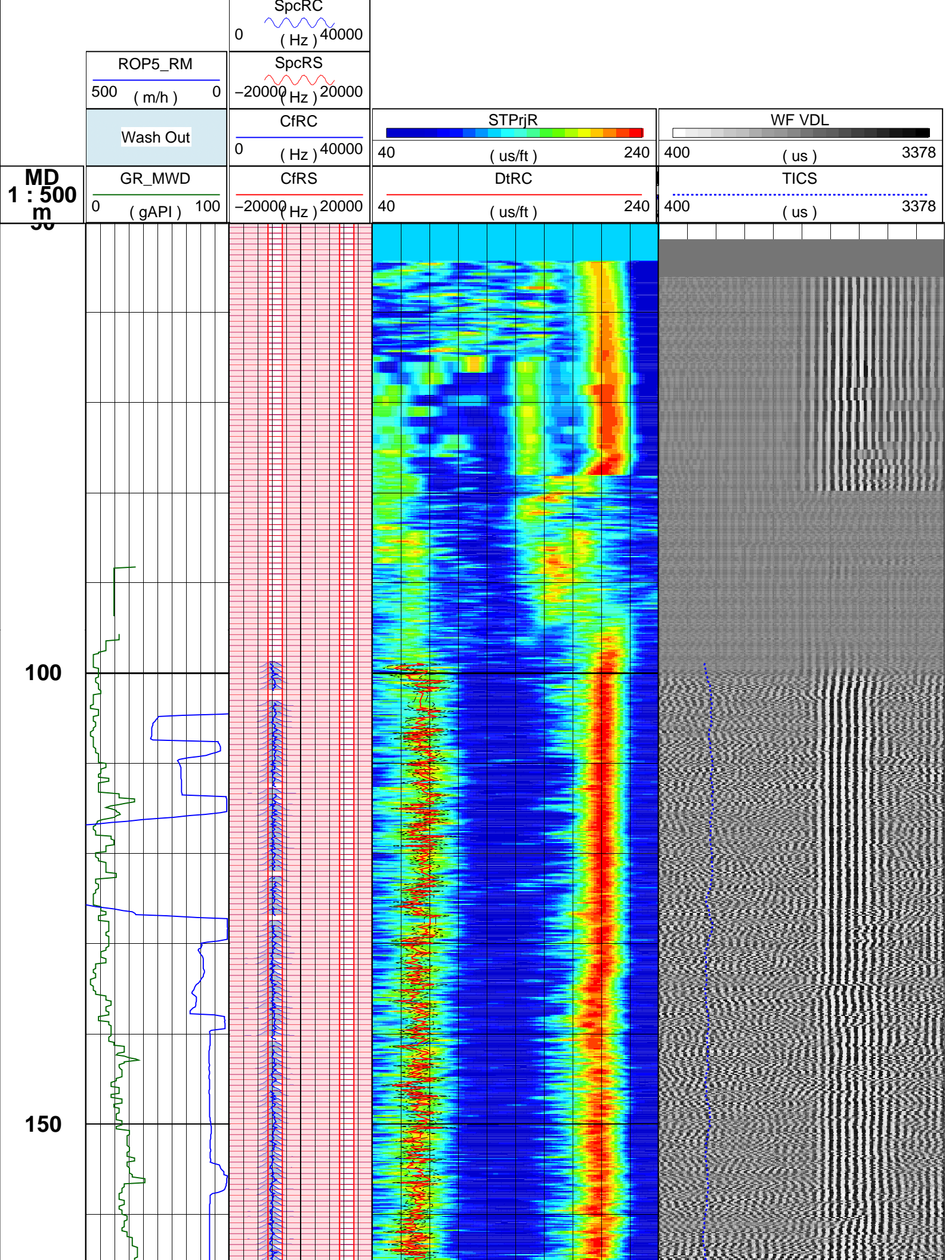
COMPANY: Apache Energy Ltd
WELL: Wasabi-1
FIELD: Wasabi
COUNTRY:
STATE:
COUNTRY: Australia
Date Logged: 17-Feb-2008 **Date Processed:** 18-Feb-2008
Well Location: Bass Strait
Elevations: **KB:** **DF:** **GL:**
API Number: **Job Number:**

FOLD HERE The well name, location and borehole reference data were furnished by the customer.

All interpretations are opinions based on inferences from electrical or other measurements and we cannot, and do not guarantee the accuracy or correctness of any interpretation, and we shall not, except in the case of gross or willful negligence on our part, be liable or responsible for any loss, costs, damages or expenses incurred or sustained by anyone resulting from any interpretations made by any of our officers, agents or employees. These interpretations are also subject to Clause 4 of our General Terms and Conditions as set out in our current Price Schedule.

Field Recording:	Location:	Software Version: 13X0-101	Engineer:
Office Recording:	ICS Center: APG	Baseline: GF 4.3	Log Analyst: Taesoo Kim
Mud and Borehole Measurements:			
Rm @ Measured Temperature:	@	BHT:	Bitsize: 12.25in
Rmf @ Measured Temperature:	@	Type Fluid in Hole:	See Water
Rmc @ Measured Temperature:	@	Mud Density: 1.06g/cm3	

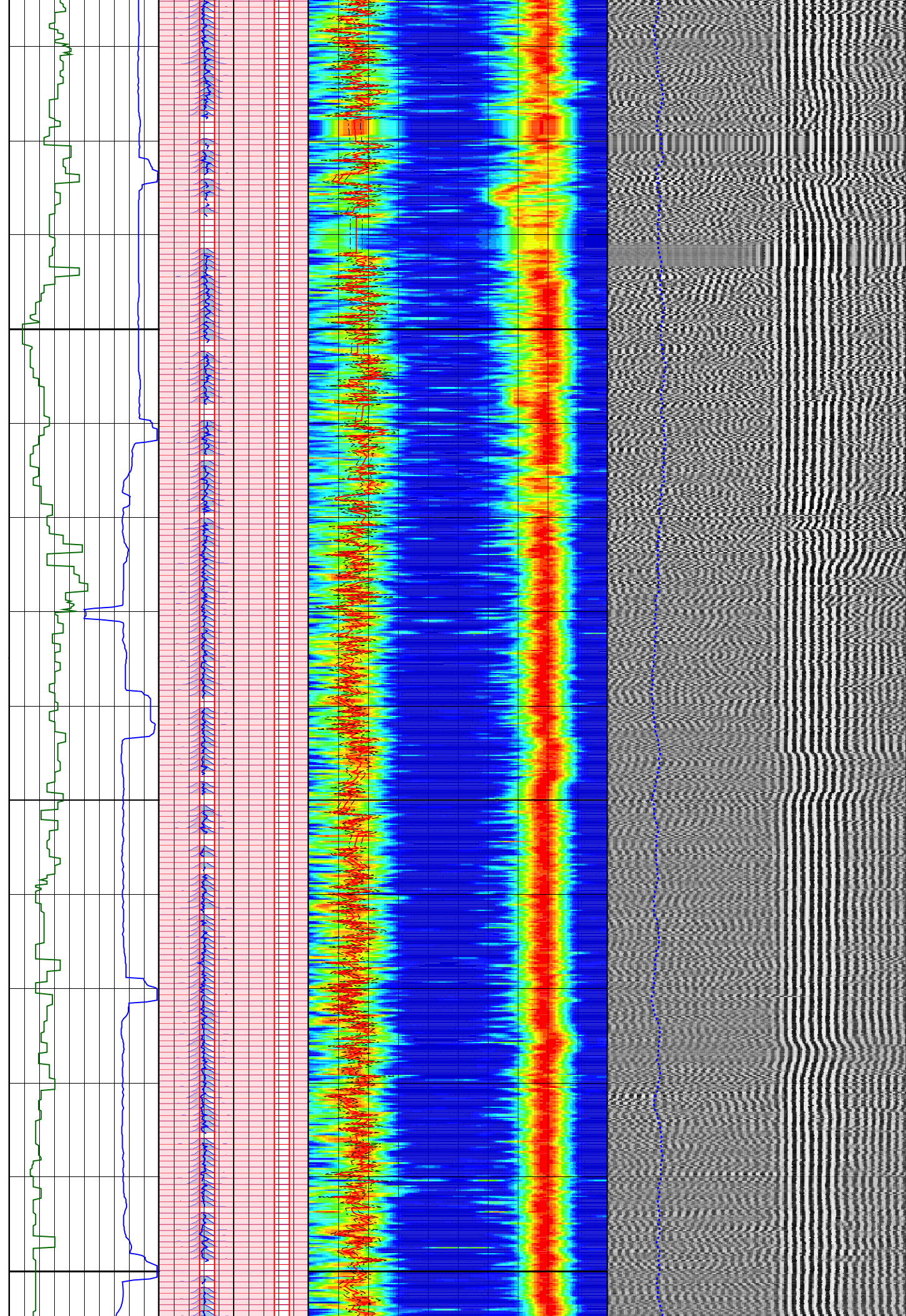
Remarks:
Data processed in computing center with 11-15 Khz filter.



200

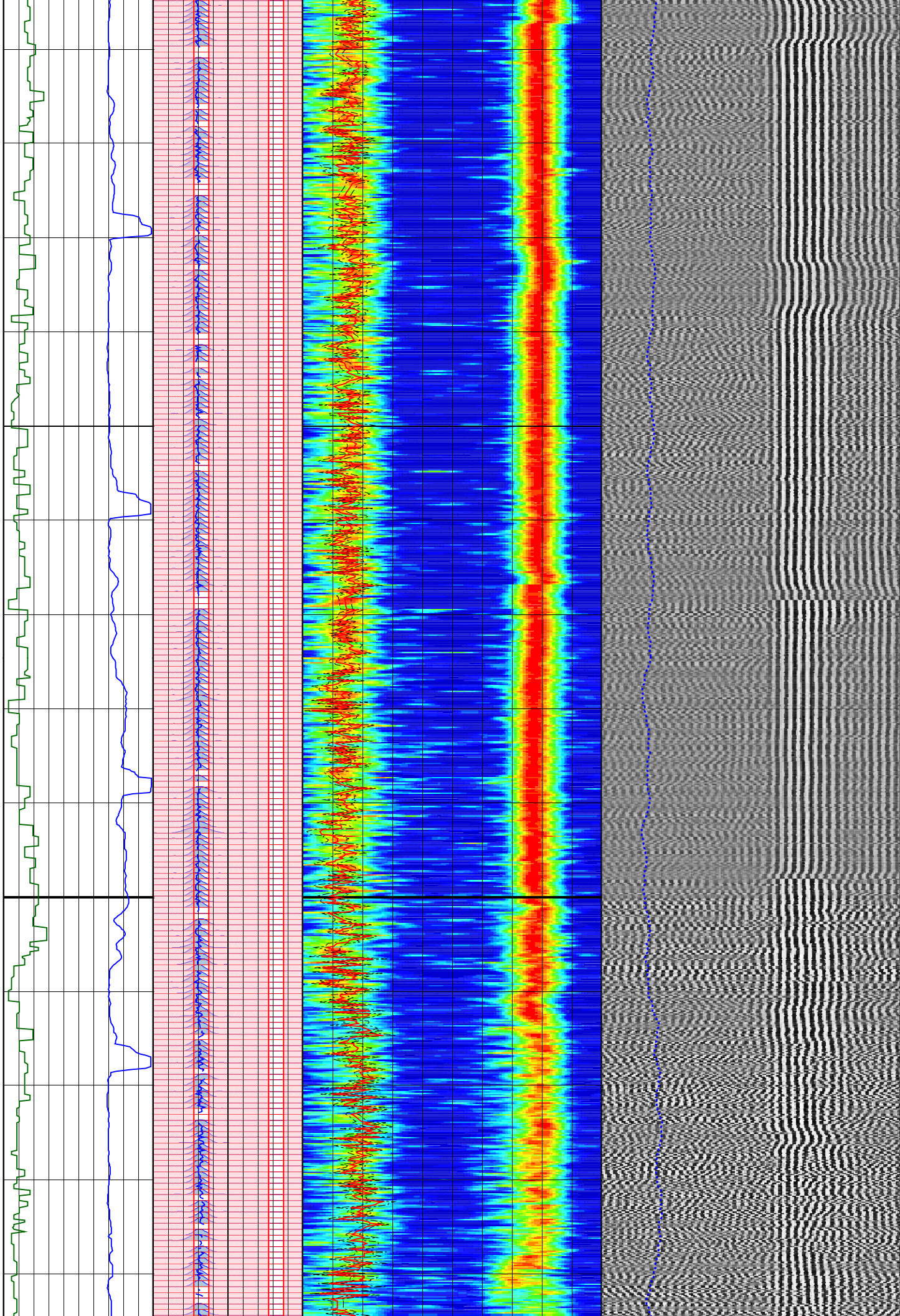
250

300



350

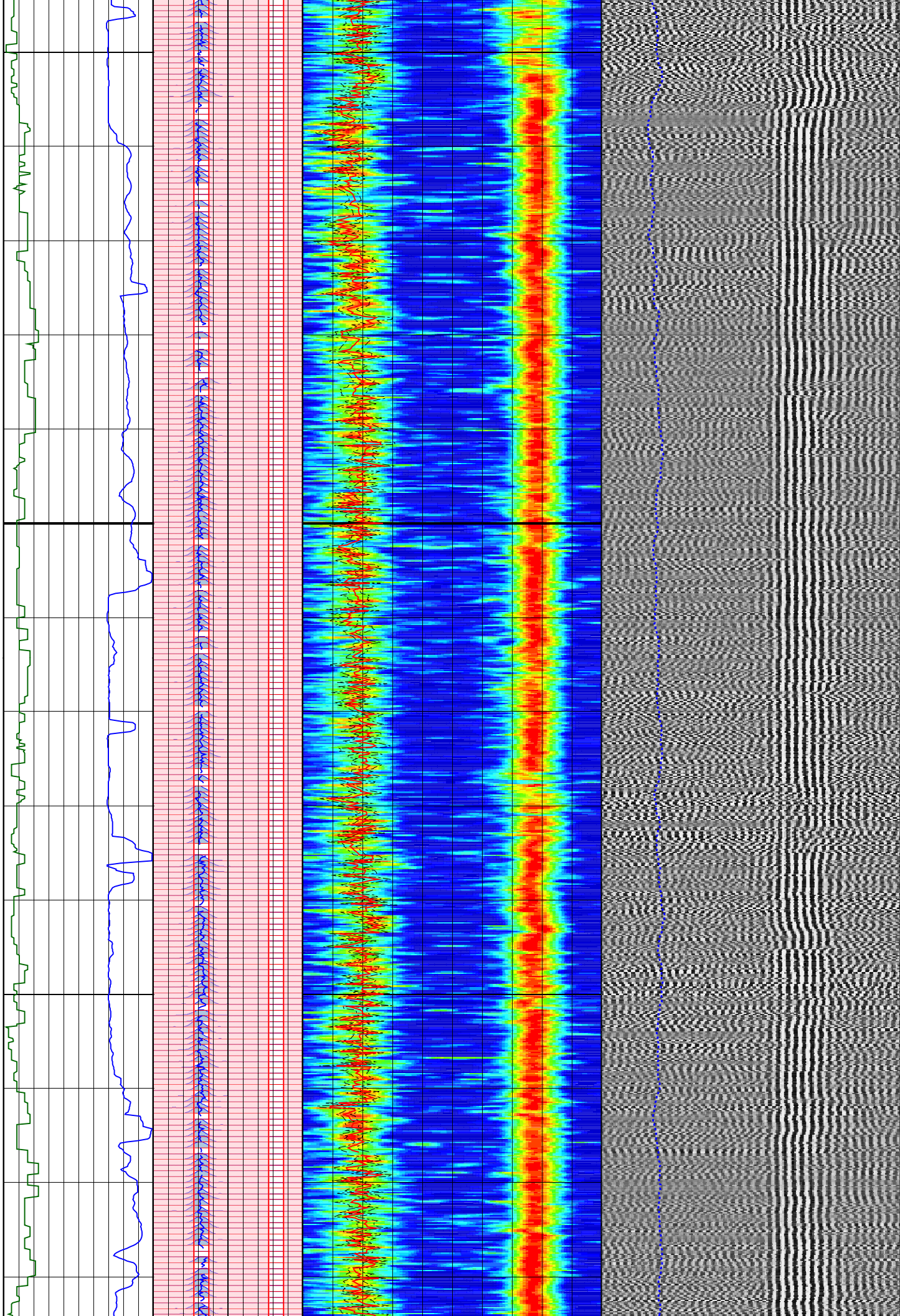
400



450

500

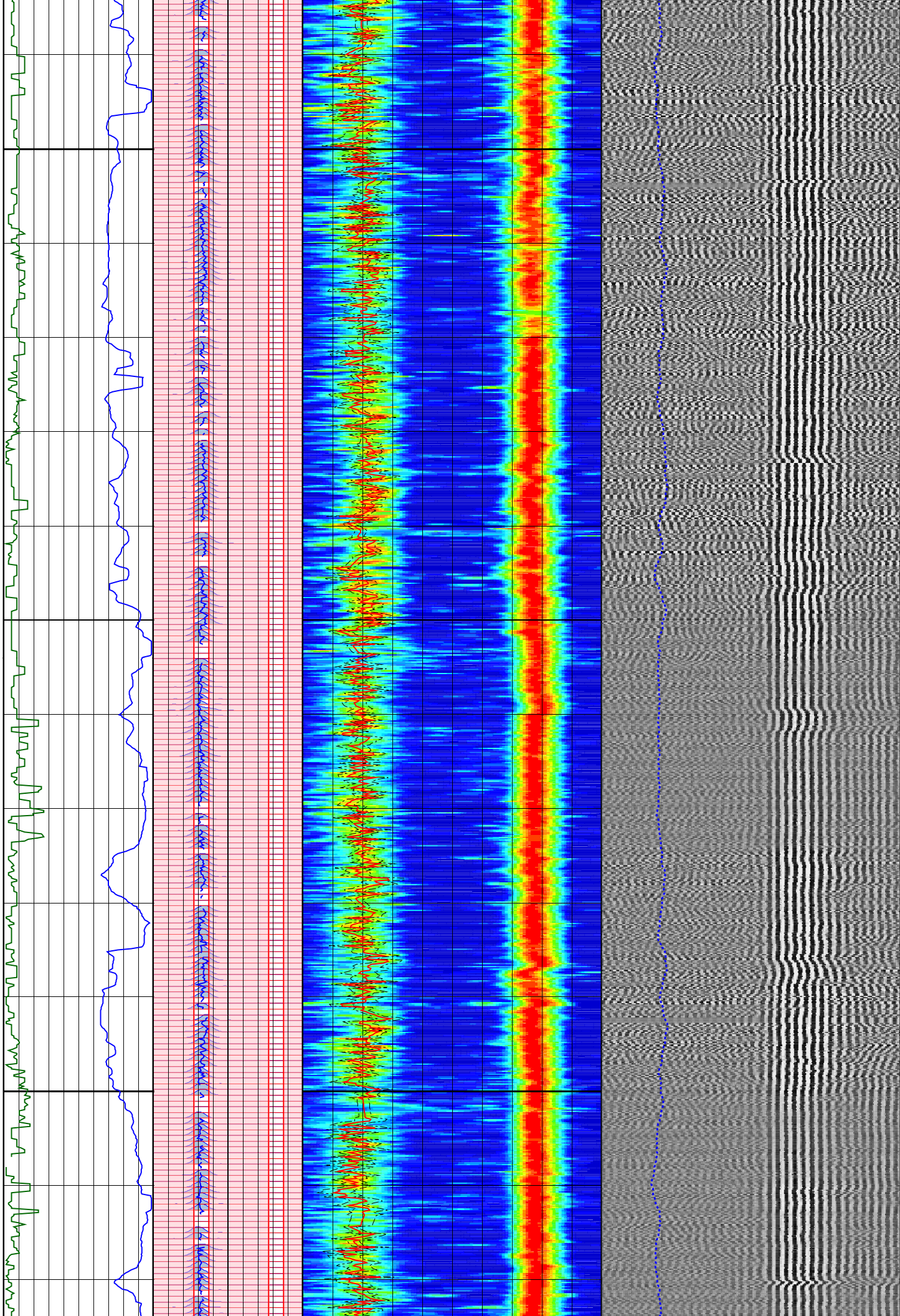
550



600

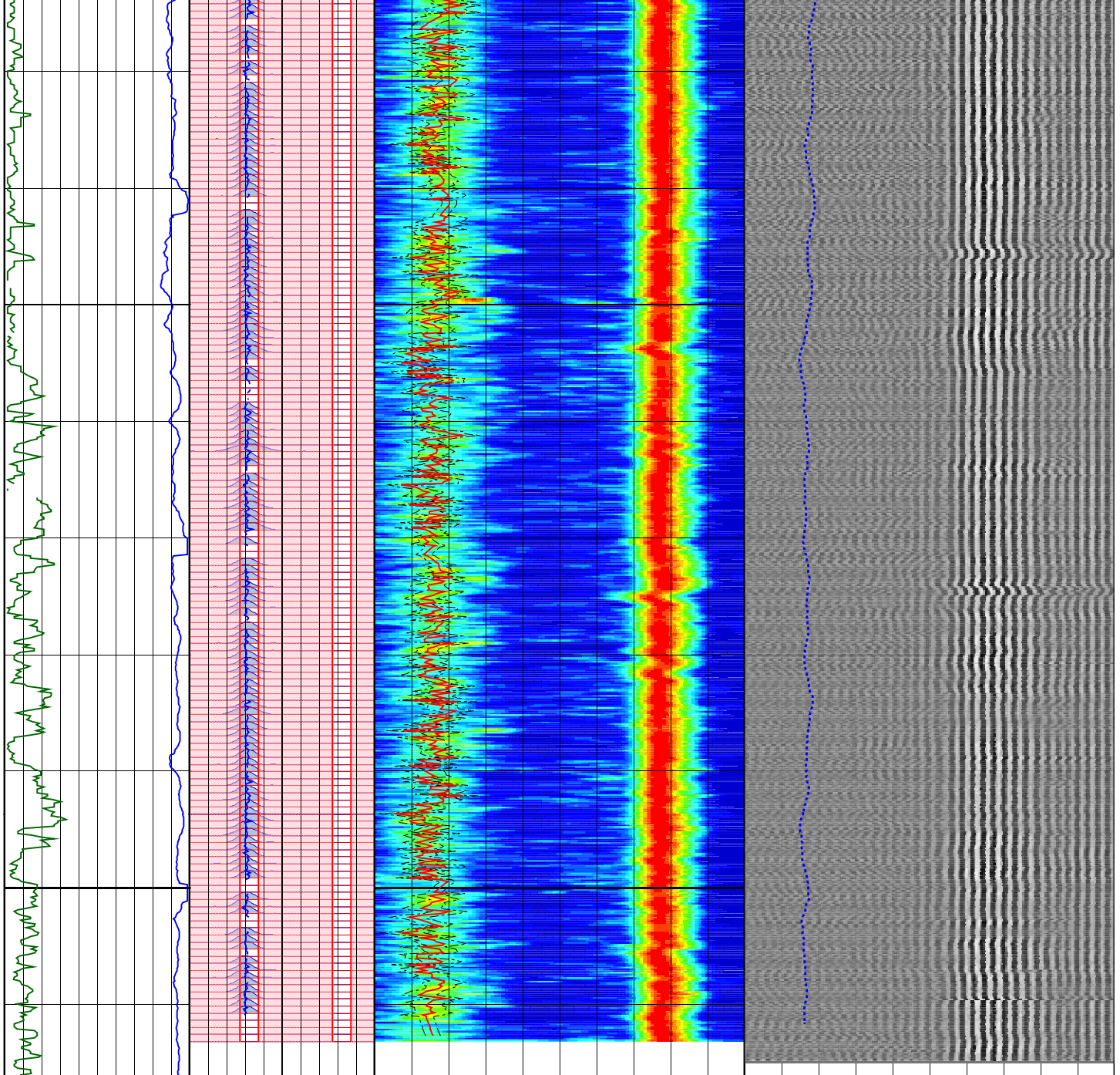
650

700



750

800



Customized Process: Start Depth (813.211 m), Stop Depth (50.1437 m), Logging Mode (ISONIC – MPS_WIDE)

Noise Cut Filtering(No), Casing Cut Filtering(No)

WF_FLG(1 1 1 1), MUD_TYPE(WBM), DTMUD(195), STCAL(Full Array)

TRSPAC(3.00228), RRSPAC(0 0.2032 0.4064 0.6096)

Hole Diameter (no input)

Zoning Guide (no input)

Tracking Guide (no input)

--- Zone Top Depth (0), Zone Name (Zone1) ---

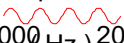
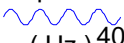
SFTY(Intermediate), BHS(OPEN), CSIZ(13.375), HDM(Fix*), HD(16)

TWI(238.281), SLL(39.7135), SUL(240.267), SST(1.98568), TLL(400), TUL(3219.66), TST(39.7135)

SBW(1120), SBO(160), SWD(20), TWD(840), SEM(0.45), FLENG(63), FLOW(11000*), FHIGH(15000*)

TKO_MODEL_ORDER(2), TKO_TOL(50) TKO_FLOW(0), TKO_FHIGH(12000)

MD 1 : 500 m	GR_MWD 0 (gAPI) 100	CfRS -20000 (Hz) 20000	DtRC 40 (us/ft) 240	TICS 400 (us) 3378
	Wash Out	CfRC 0 (Hz) 40000	STPrjR 40 (us/ft) 240	WF VDL 400 (us) 3378

<p>ROP5_RM</p> <hr/> <p>500 (m/h) 0</p>	<p>SpcRS</p>  <p>(Hz)</p> <p>-20000 20000</p>
	<p>SpcRC</p>  <p>(Hz)</p> <p>0 40000</p>