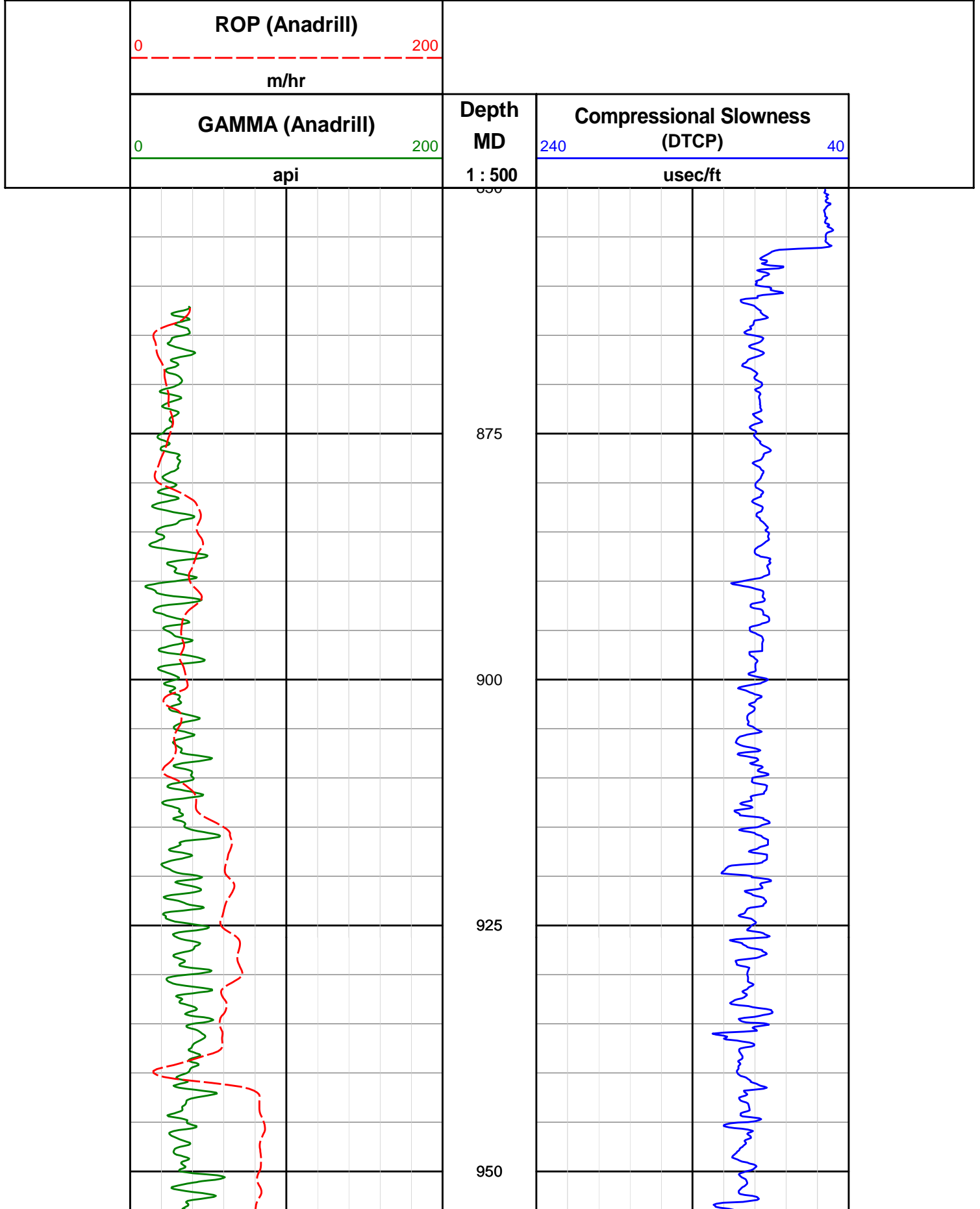


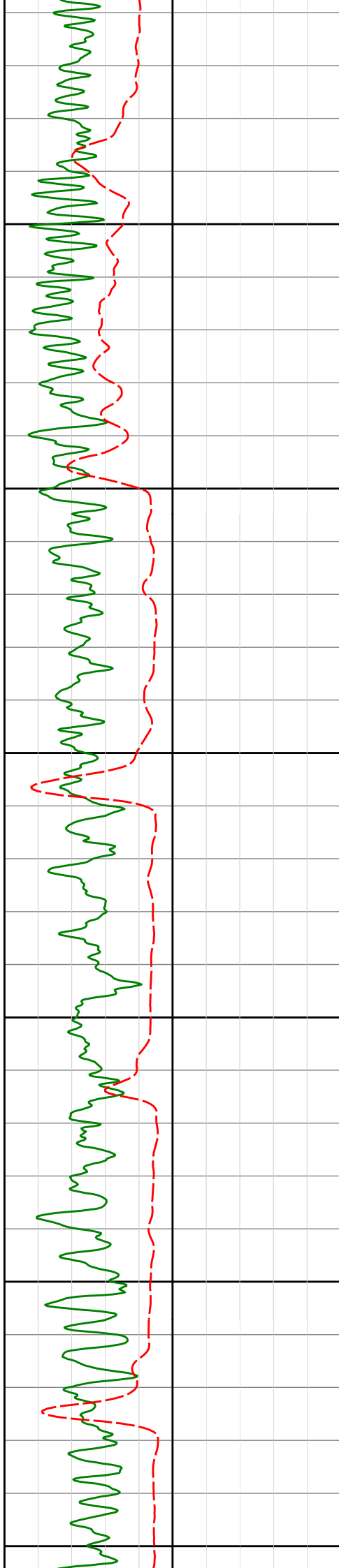
Well: Wasabi-1 Field: Exploration

Apache Northwest Pty Ltd

Recorded LWD Data - Field Copy

311mm Hole Section





975

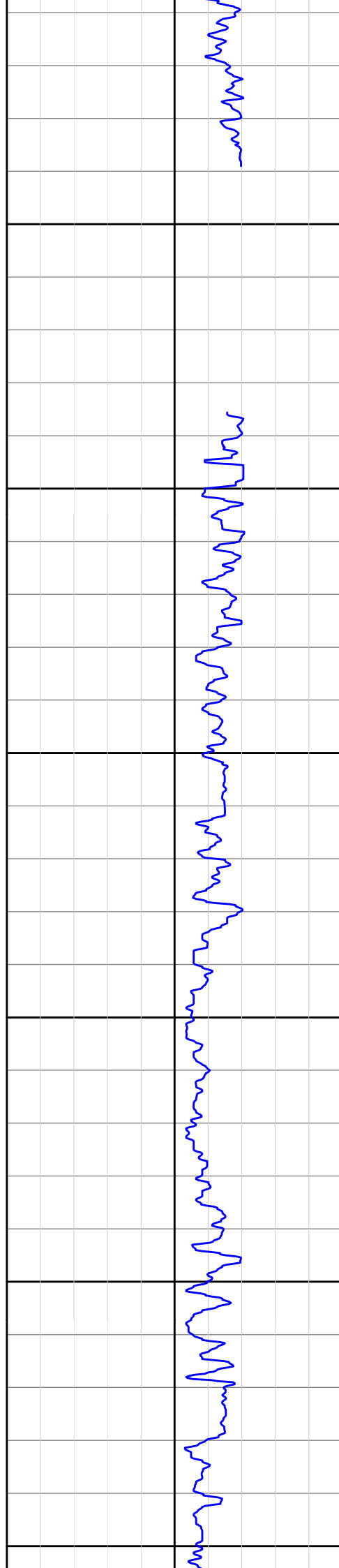
1000

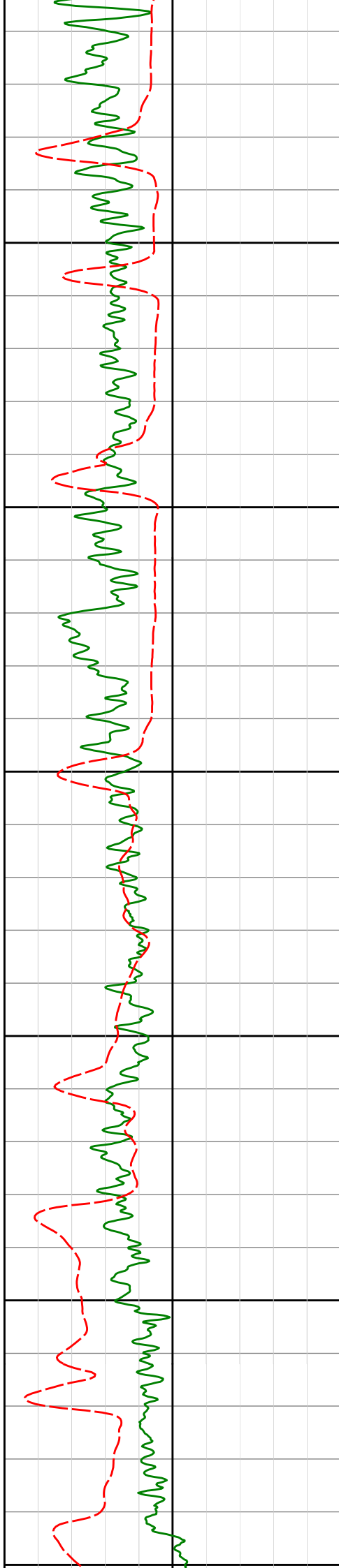
1025

1050

1075

1100





1125

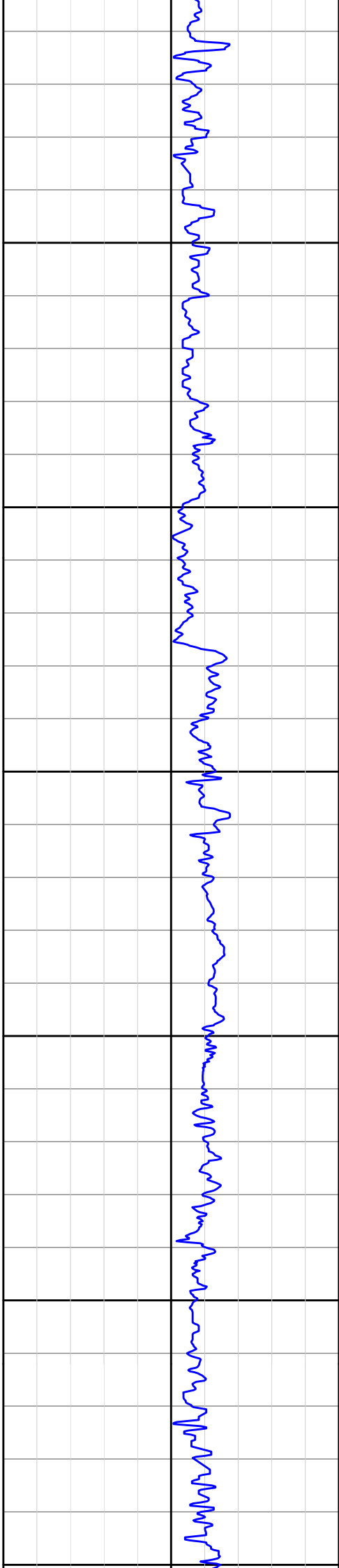
1150

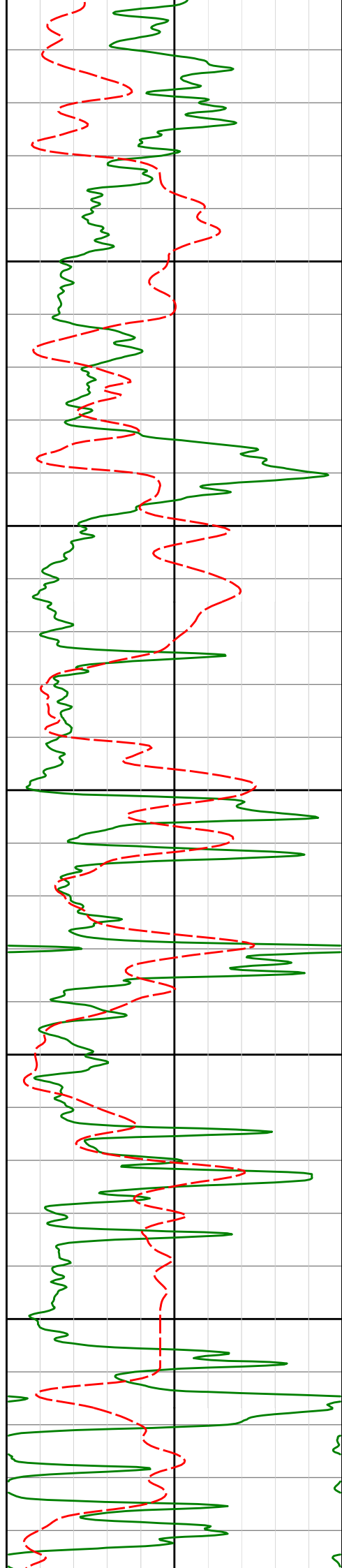
1175

1200

1225

1250





1250

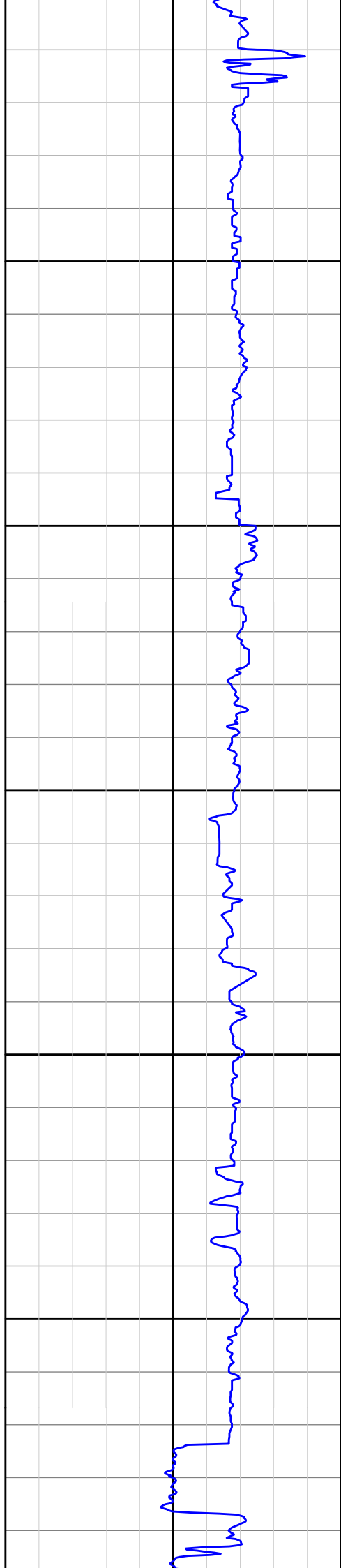
1275

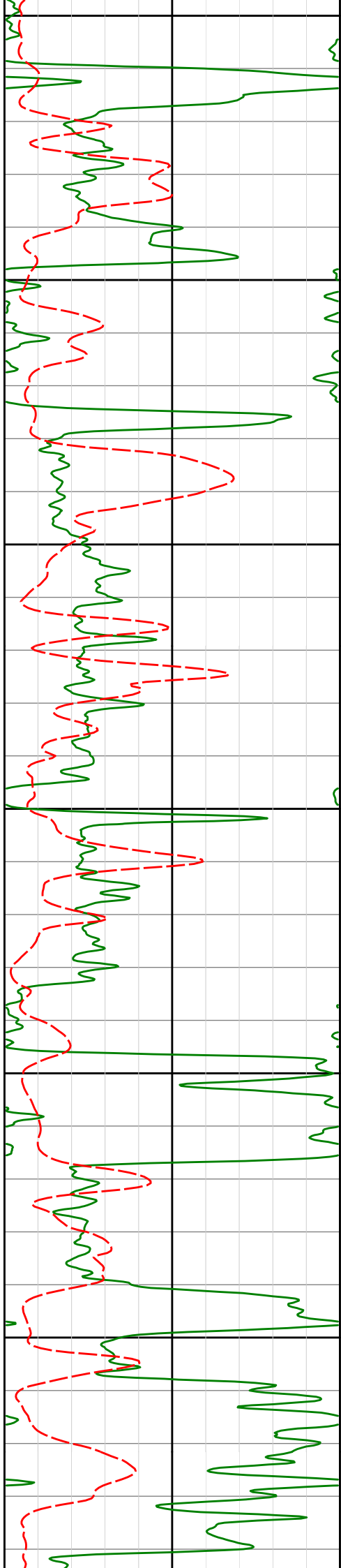
1300

1325

1350

1375





1400

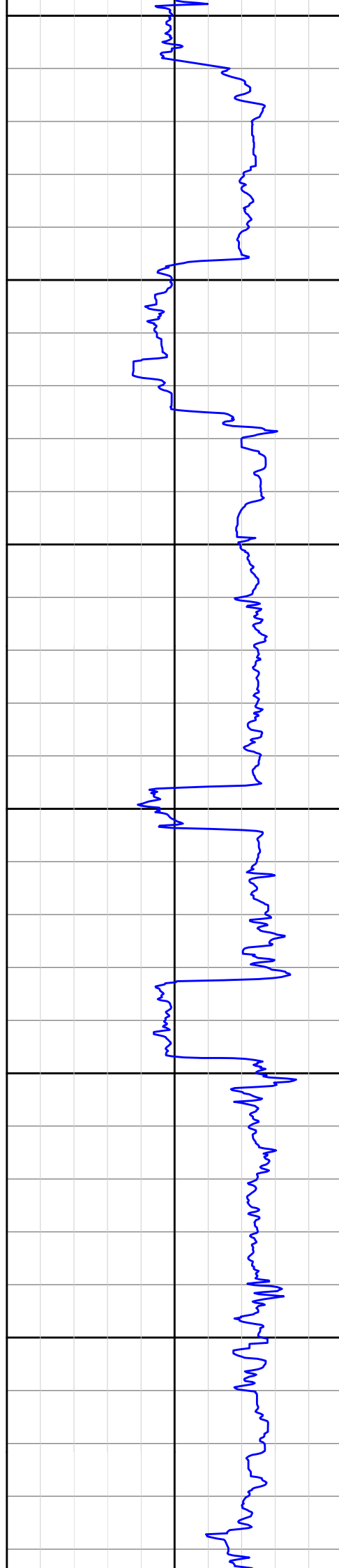
1425

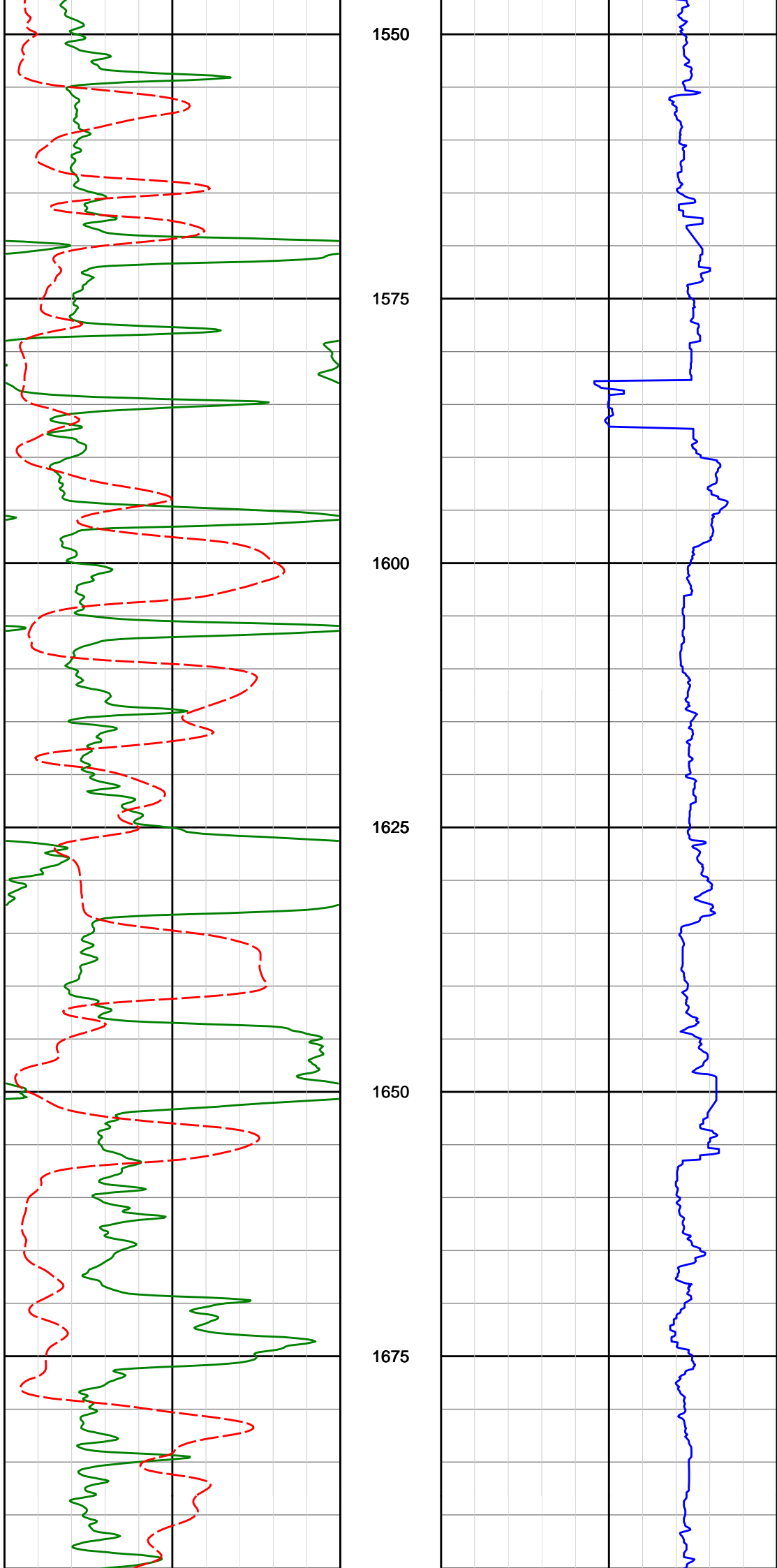
1450

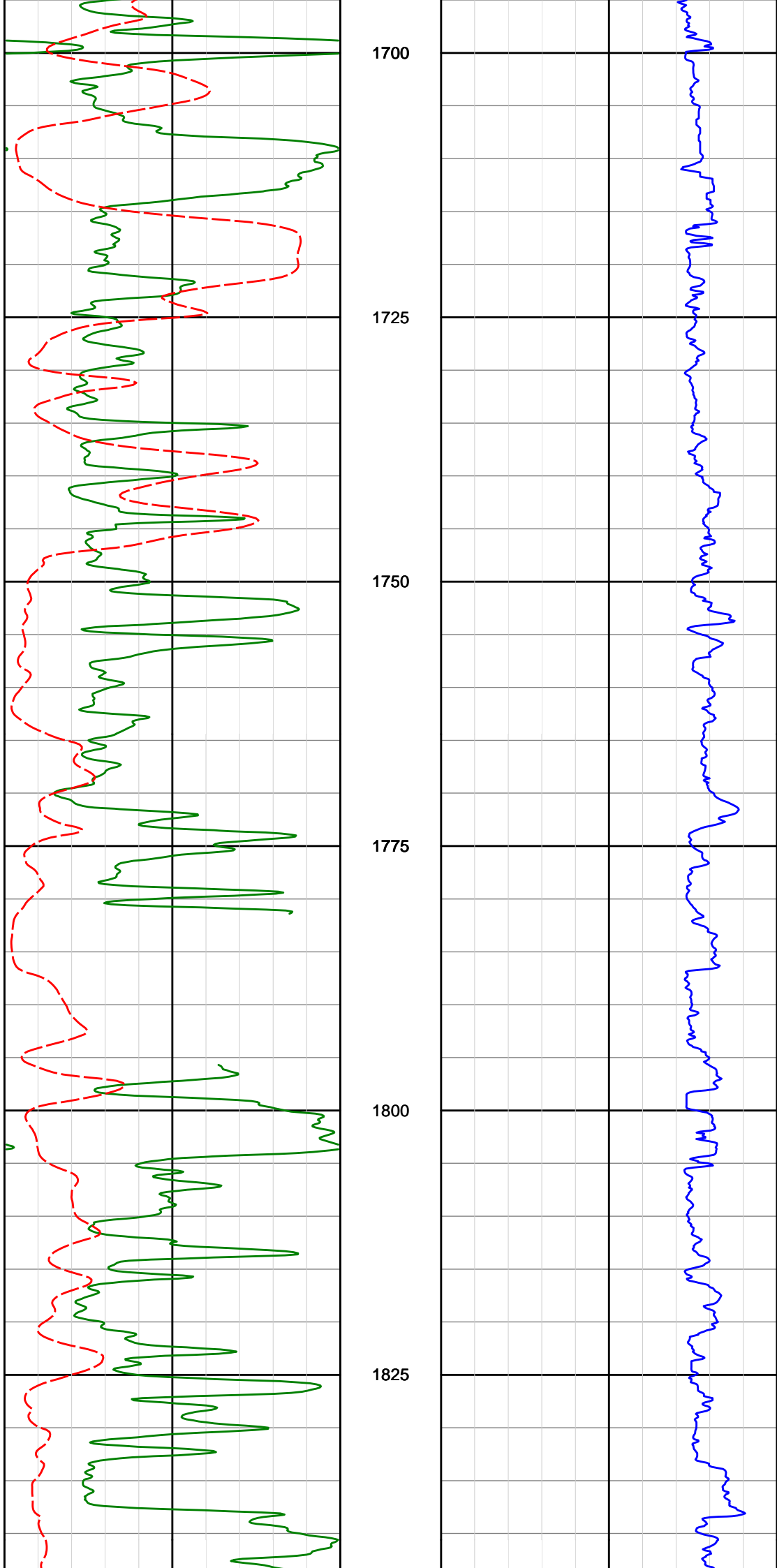
1475

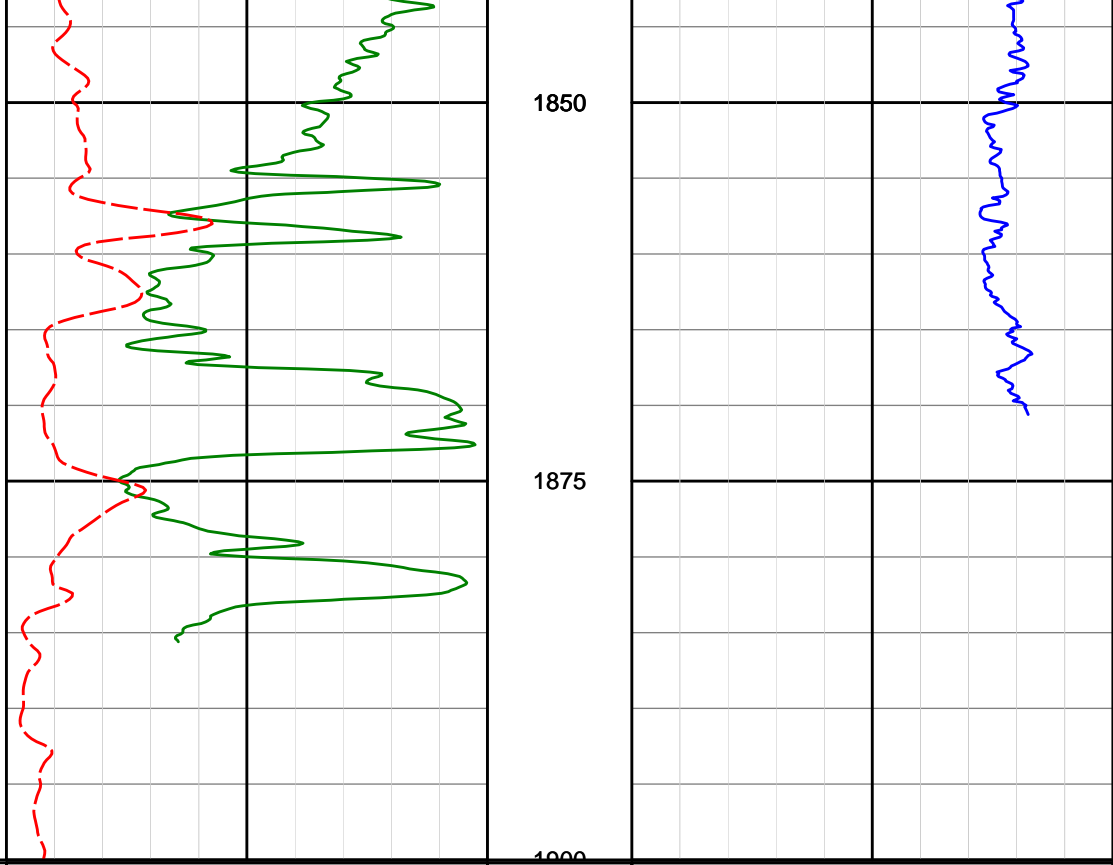
1500

1525









	GAMMA (Anadrill)	Depth	Compressional Slowness	
0	200	MD	240	40
	api	1 : 500	usec/ft	
	ROP (Anadrill)			
0	200			
	m/hr			