

Company: Esso Australia Pty Ltd.

Well: A-11a  
Field: Snapper  
Rig: Crane

Country: Australia

Crane  
Snapper  
Gippsland Basin  
A-11a  
Esso Australia Pty Ltd.

MaxTrac / Perforating Platform  
2" HSD Perforation Record  
Perforation Record

LOCATION		
Gippsland Basin  Bass Strait		Elev.: K.B. 41.68 m
		G.L. 0.00 m
		D.F. 41.68 m
Permanent Datum:	M.S.L.	Elev.: 0.00 m
Log Measured From:	DF	41.68 m above Perm. Datum
Drilling Measured From:	DF	

State: Victoria	Max. Well Deviation 84.5 deg	Longitude 148°01'26.52"E	Latitude 038°11'42.96"S
-----------------	---------------------------------	-----------------------------	----------------------------

Logging Date 24-Oct-2009

Run Number Two

Depth Driller 5170.2 m

Schlumberger Depth 5137 m

Bottom Log Interval 5150 m

Top Log Interval 4800 m

Casing Fluid Type Production Fluids

Salinity

Density

Fluid Level

BIT/CASING/TUBING STRING

Bit Size 7.656 in

From 4347.8 m

To 5202 m

Casing/Tubing Size 7.000 in

Weight 26 lbm/ft

Grade L-80

From 4080 m

To 5202 m

Maximum Recorded Temperatures 219 degF

Logger On Bottom 24-Oct-2009 8:49

Unit Number 889 Location AUSL

Recorded By J Hollingworth, S Gilbert

Witnessed By A Smyth, G Rimmer

	Run 1	Run 2	R
--	-------	-------	---

Oil Density			
Water Salinity			
Gas Gravity			
Bo			
Bw			
1/Bg			

Bubble Point Pressure			
Bubble Point Temperature			
Solution GOR			

Maximum Deviation	84.5 deg		
-------------------	----------	--	--

CEMENTING DATA

Primary/Squeeze	Primary		
-----------------	---------	--	--

Casing String No

Lead Cement Type

Volume

Density

Water Loss

Additives

Tail Cement Type

Volume

Density

Water Loss

Additives

Expected Cement Top

Logging Date			
--------------	--	--	--

Run Number

Depth Driller

Schlumberger Depth

Bottom Log Interval

Top Log Interval

Casing Fluid Type

Salinity

Density

Fluid Level

BIT/CASING/TUBING STRING

Bit Size

From

To

Casing/Tubing Size

Weight

Grade

From

To

Maximum Recorded Temperatures

Logger On Bottom Time

Unit Number Location

Recorded By

Witnessed By

Run 4

Date Created: 22-OCT-2009 3:04:54

## Logging Cable

Type:	2-32ZT
Serial Number:	207505
Length:	6421 M
<hr/>	
Conveyance Method:	Wireline
Rig Type:	Rigless

Log Correlated to Solar Composite Log . Dated 20-Oct-2009
Objective: Perforate the interval 4954.6m to 4961.6m MDKB in 2 runs using 2" HSD Powerjet Omega guns @6spg, 60 deg phasing .
Gun # 1 ----- 4857.1m to 4961.6m MDKB
Top Shot @ 4957.1m MDKB
WPST to Top Shot = 2.38m

SLB Crew – D Halstead , R Murry ( Days )  
J Annear , G Martin ( Nights )

RUN 1			RUN 2		
SERVICE ORDER #:		B297-0006	SERVICE ORDER #:		
PROGRAM VERSION:		17C0-154	PROGRAM VERSION:		
FLUID LEVEL:			FLUID LEVEL:		
LOGGED INTERVAL	START	STOP	LOGGED INTERVAL	START	STOP

RUN 1

## SURFACE EQUIPMENT

No SHM  
PSTD-B 80  
WITM-A 3576  
PSC 16MHZ

## DOWNHOLE EQUIPMENT

**PSTE**  
**MSH-A 1102**  
**ERS-E 1270**  
**TTSA-A 503**  
**Tension Sub 503**  
**PSTE-S 80**  
**PSTE-S 80**  
**PSC-ATS**  
**PSTC-A**  
**Motor Supervisor**  
**PSTE PS**

## Head Tens

CCL  
Pull Forc  
Basic Mea  
Pwr Suppl

\_\_\_\_\_ 19.09

17.54

1. 100

PSTS-S2 188  
PSTS-S2 188  
PSTM-S2

PSTM 2 Ba

PSTM 2 Gr

         16.33

\_\_\_\_\_ 14.90

PSTS-S1  
PSTS-S1 54  
PSTM-S1

PSTM 1 Ba

PSTM 1 Gr

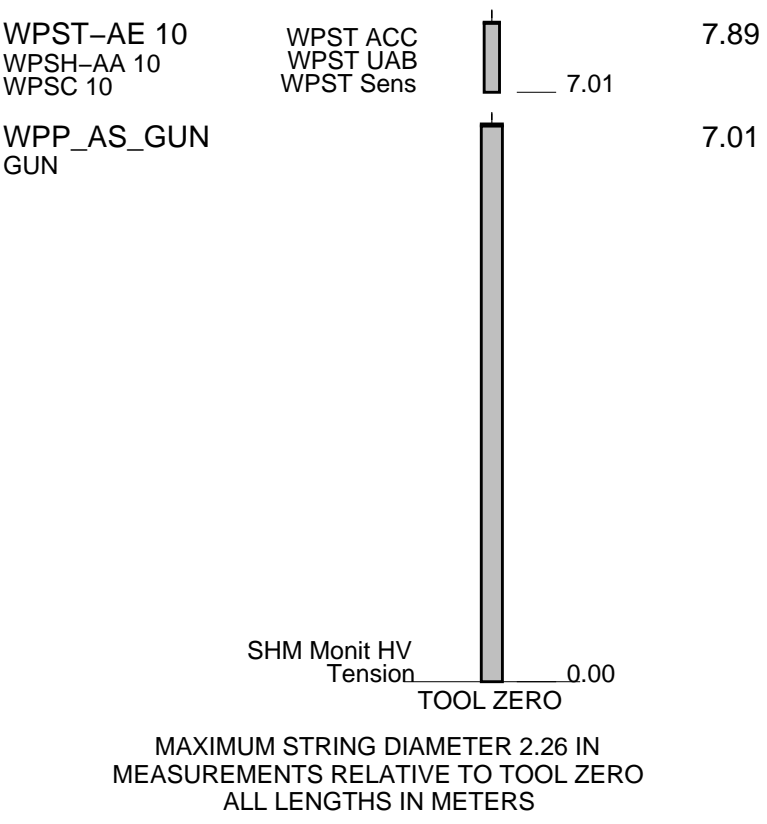
12.14

\_\_\_\_\_ 10.71

WPGRT-A 4  
WPGRH-A 4  
WPGRC-A 4

GR

8.19



Client: Esso Australia Pty Ltd.

Well: A-11a

Field: Snapper

State: Victoria

Country: Australia

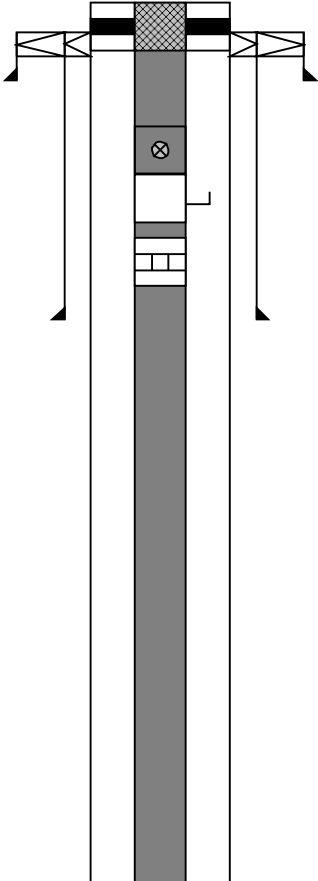
Rig Name: Snapper

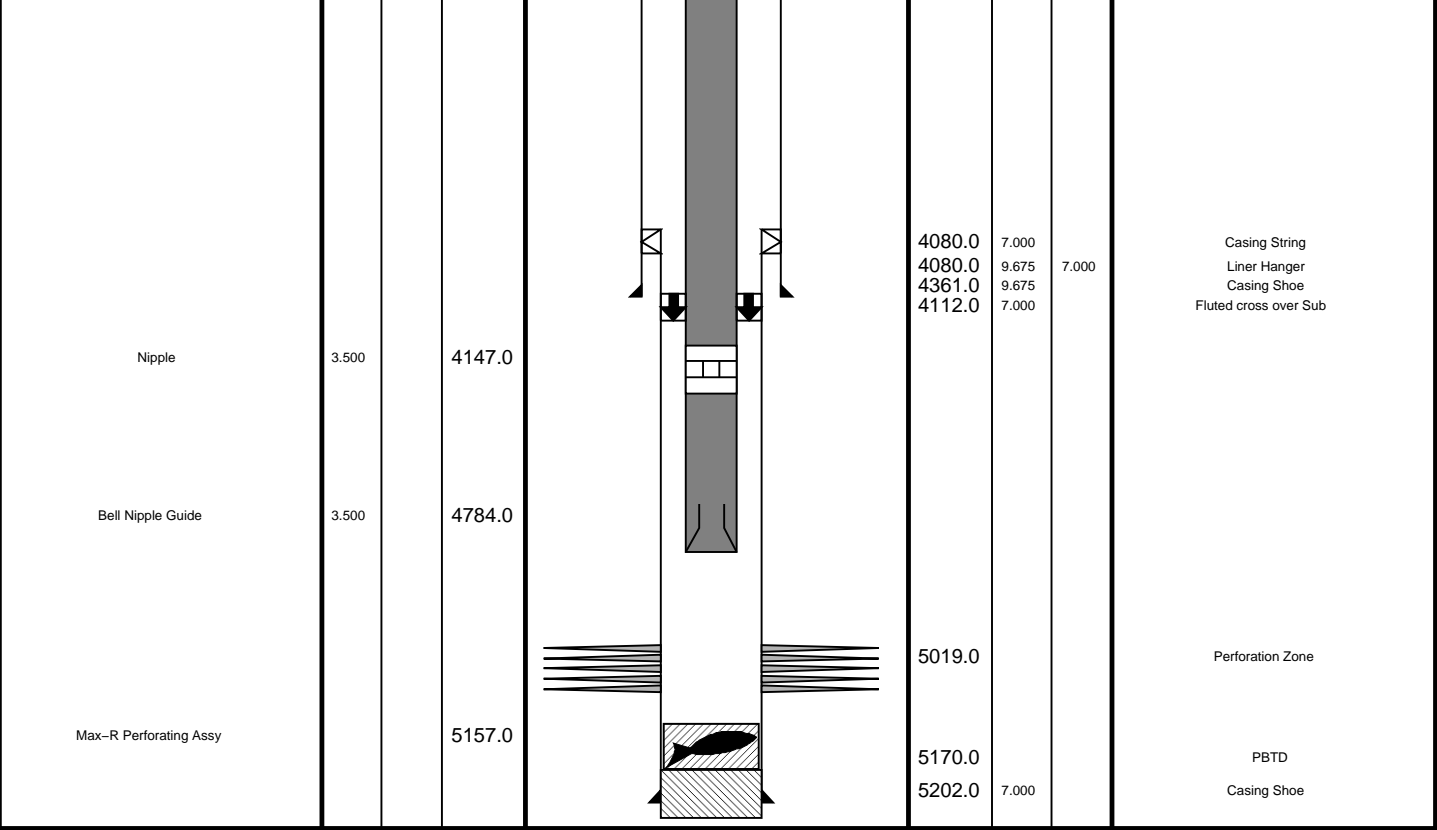
Reference Datum: Derrick Floor

Elevation: 41.6 m

Drawing Date: 10/22/2009

API #:

Production String	(in)		(m)	Well Schematic	(m)	(in)		Casing String
	OD	ID	MD		MD	OD	ID	
Tubing Hanger	9.675	3.500	21.7		22.1	20.000	13.375	Casing String
Tubing	3.500		21.7		160.0	20.000	13.375	Liner Hanger
Shutin Valve	3.500		453.0					
Gas Lift Mandrel	3.500		605.6					
Nipple	3.500		621.0		912.6	13.375		Casing Shoe



Gun # 1 Shoot Pass  
Fired @ 4957.1m – 4961.6m MDKB

MAXIS Field Log

Company: Esso Australia Pty Ltd. Well: A-11a

Output DLIS Files

DEFAULT PERFO\_Perfo\_WPGRT\_087LUP FN:91 PRODUCER 24-Oct-2009 19:37

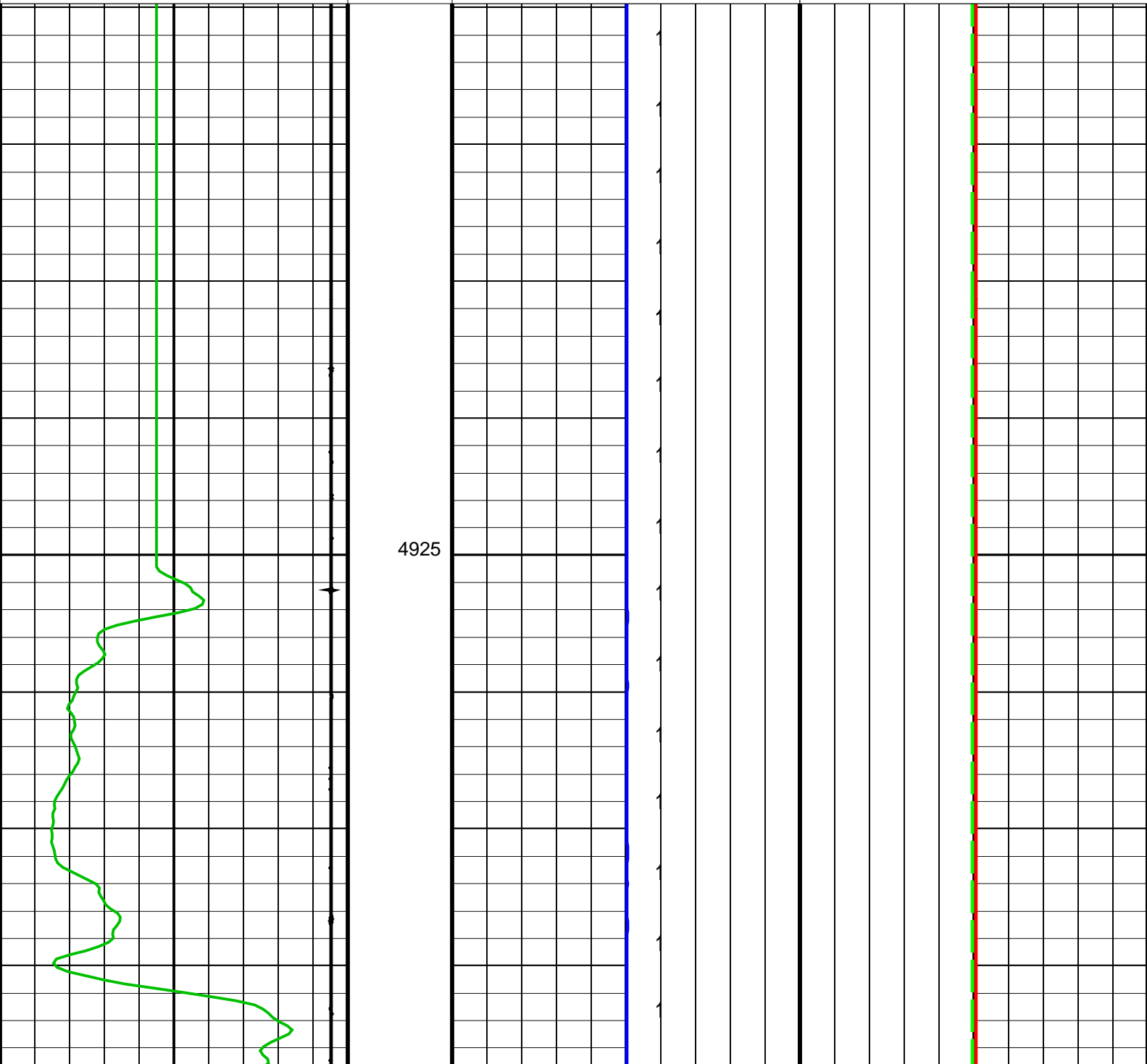
OP System Version: 17C0-154

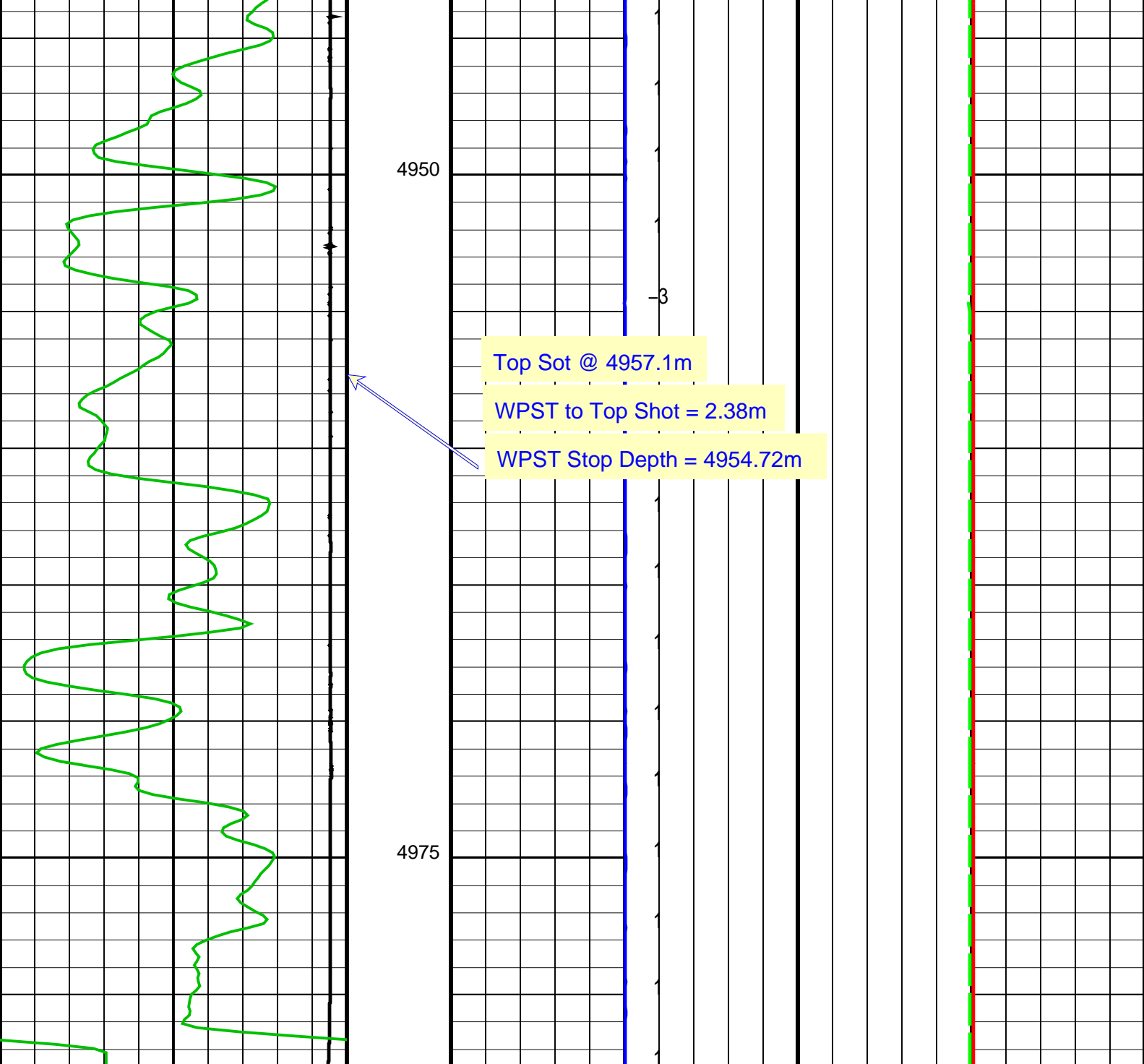
WPP_AS_GUN	17C0-154	WPST-AE	SRPC-3870_Q3_2009_OP17_V3
WPGRT-A	17C0-154	PSTS-S1	SRPC-3870_Q3_2009_OP17_V3
PSTS-S2	SRPC-3870_Q3_2009_OP17_V3	PSTE	SRPC-3870_Q3_2009_OP17_V3

Changed Parameter Summary

DLIS Name	New Value	Previous Value	Depth & Time
-----------	-----------	----------------	--------------

	Shoot Positive From RHT2 to GUNV	
	Charge Positive From RHT2 to HVPC	
	Shoot Negative From GUNV to LHT2	Alpha GUNV (GUNV_WPST) (V) WPST Negative Charge Voltage (HVNC_WPST) -520 (V) 520
	Charge Negative From HVNC to LHT2	
Computed CCL (CCLC_PSTT) -9.5 (V) 0.5	WPST Gun Voltage (GUNV_WPST) -520 (V) 520	
Gamma Ray (GR_WPGRT) 0 (GAPI) 150	WPST Positive Charge Voltage (HVPC_WPST) -520 (V) 520	





Gamma Ray (GR_WPGRT)			WPST Gun Voltage (GUNV_WPST)			WPST Positive Charge Voltage (HVPC_WPST)			
0 (GAPI) 150			-520 (V) 520			-520 (V) 520			
Computed CCL (CCLC_PSTT)			Charge Negative From HVNC to LHT2						
-9.5 (V) 0.5									
			Shoot Negative From GUNV to LHT2	Alpha GUNV (GUNV_WPST) (V)	WPST Negative Charge Voltage (HVNC_WPST)				
			-520 (V) 520						
			Charge Positive From RHT2 to HVPC						
				Shoot Positive From RHT2 to GUNV					

Parameters

DLIS Name	Description	Value
WPST-AE: WPP Shooting Tool		
U-COMM_VOLT	ASFS Comm Voltage	50 V
U-ERSB_ON_TIME	ERSB Voltage Hold Time	180 S
U-SEC_ON_TIME	SECURE Voltage Hold Time	10 S
U-SHOOT_VOLT_LIM	Shooting Voltage Limit	510 V
PSTE: Production Services Tractor Tool – Slim		
CCLG	Casing Collar Locator Gain	0DB

Format: WPP\_Perfo    Vertical Scale: 1:200    Graphics File Created: 24-Oct-2009 19:37

## OP System Version: 17C0-154

WPP_AS_GUN	17C0-154	WPST-AE	SRPC-3870_Q3_2009_OP17_V3
WPGRT-A	17C0-154	PSTS-S1	SRPC-3870_Q3_2009_OP17_V3
PSTS-S2	SRPC-3870_Q3_2009_OP17_V3	PSTE	SRPC-3870_Q3_2009_OP17_V3

## Output DLIS Files

DEFAULT    PERFO\_Perfo\_WPGRT\_087LUP    FN:91    PRODUCER    24-Oct-2009 19:37

**Schlumberger**

Gun # 1 Correlation Pass

MAXIS Field Log

Company: Esso Australia Pty Ltd.    Well: A-11a

## Output DLIS Files

DEFAULT    PERFO\_Perfo\_WPGRT\_086LUP    FN:90    PRODUCER    24-Oct-2009 19:26

## OP System Version: 17C0-154

WPP_AS_GUN	17C0-154	WPST-AE	SRPC-3870_Q3_2009_OP17_V3
WPGRT-A	17C0-154	PSTS-S1	SRPC-3870_Q3_2009_OP17_V3
PSTS-S2	SRPC-3870_Q3_2009_OP17_V3	PSTE	SRPC-3870_Q3_2009_OP17_V3

Shoot Positive  
From RHT2 to  
GUNV

Charge Positive  
From RHT2 to HVPC

Shoot Negative  
From GUNV to  
LHT2

Alpha GUNV  
(GUNV\_WPST)  
(V)

WPST Negative Charge Voltage (HVNC\_  
WPST)  
-520 (V) 520

Computed CCL (CCLC\_PSTT)

-9.5 (V) 0.5

Gamma Ray (GR\_WPGRT)

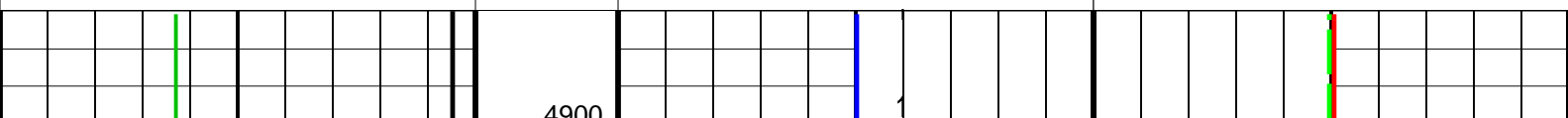
0 (GAPI) 150

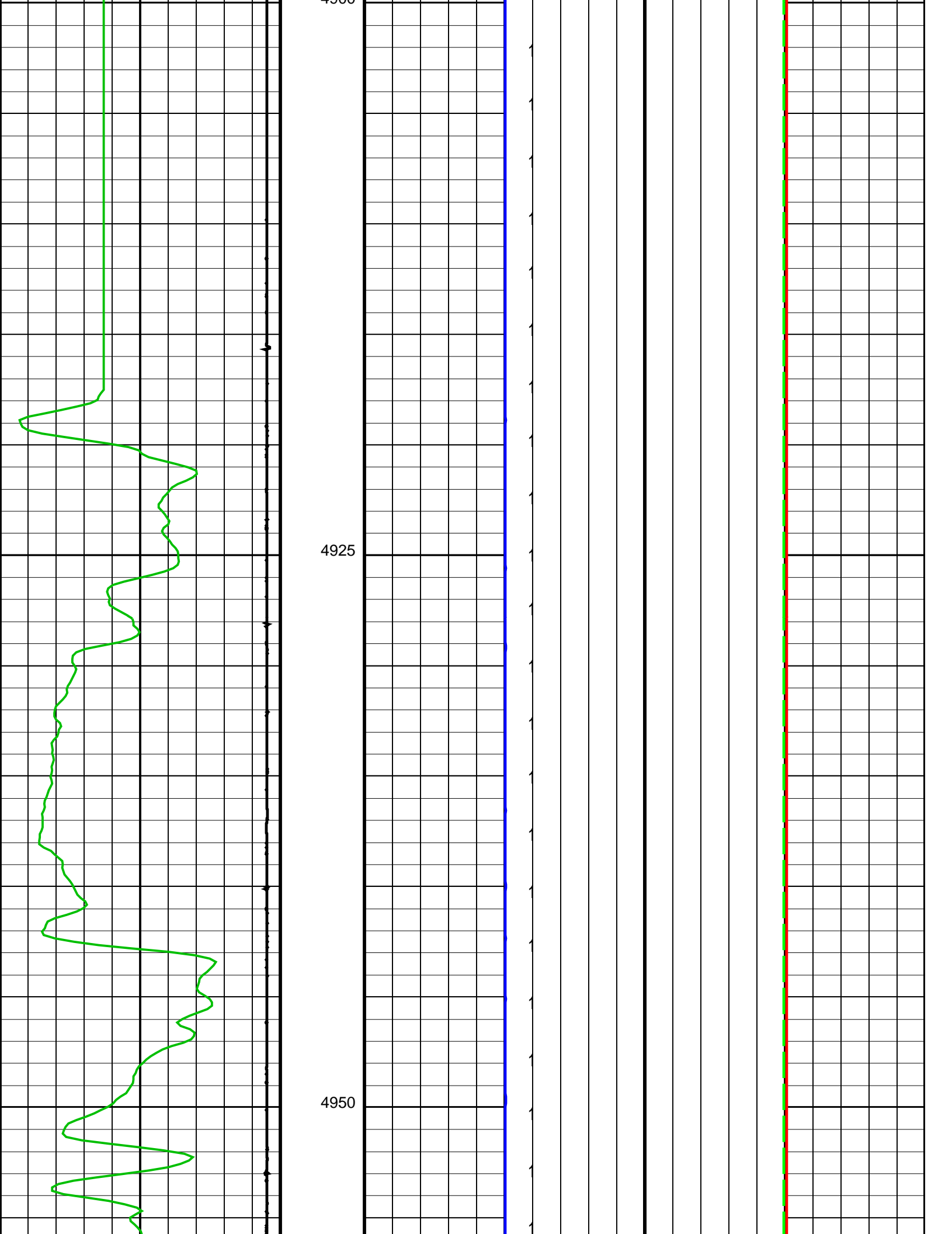
WPST Gun Voltage (GUNV\_WPST)

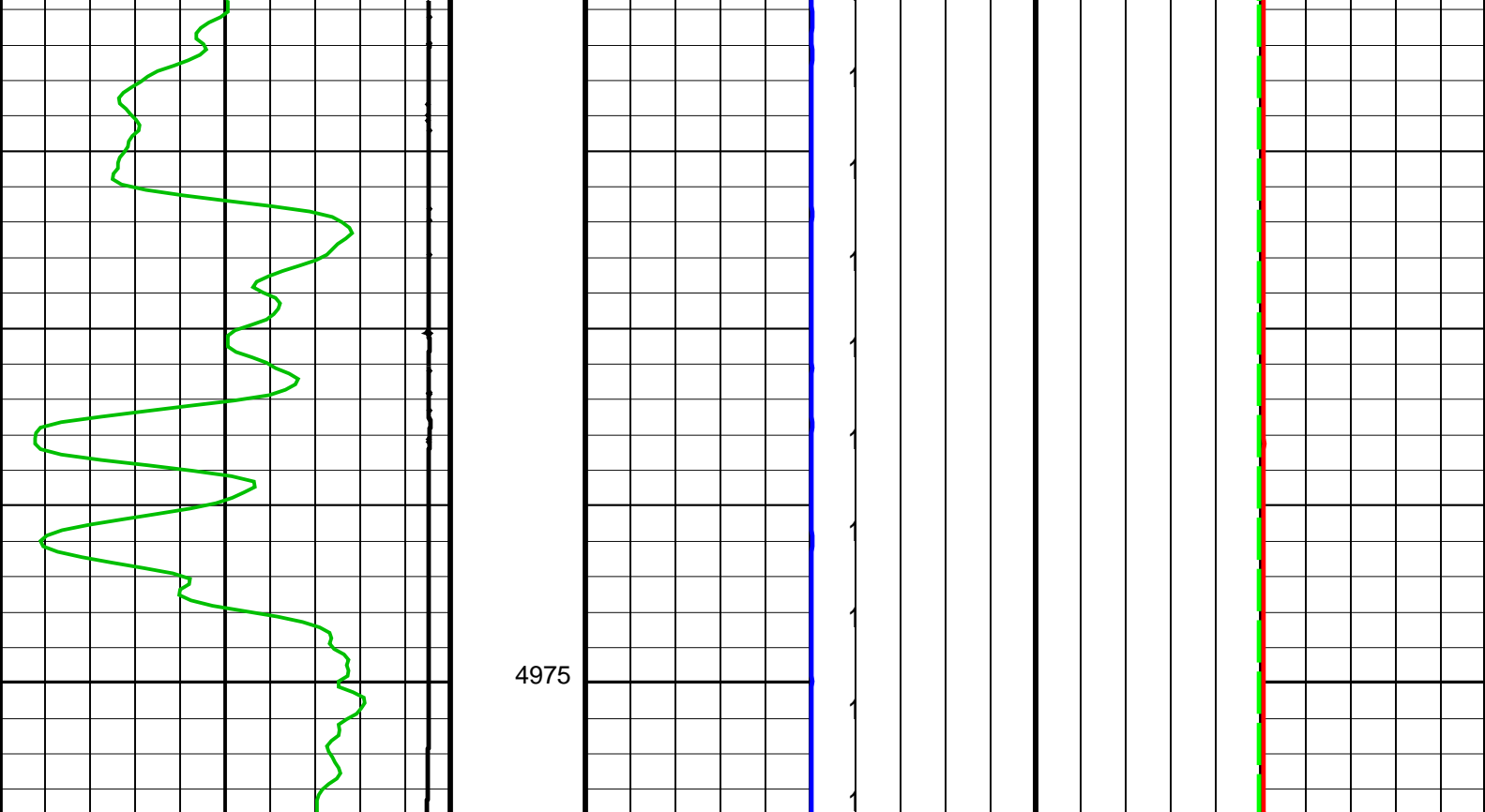
-520 (V) 520

WPST Positive Charge Voltage (HVPC\_  
WPST)

-520 (V) 520







<div>Gamma Ray (GR_WPGRT)</div> <div>0 (GAPI) 150</div>			<div>WPST Gun Voltage (GUNV_WPST)</div> <div>-520 (V) 520</div>			<div>WPST Positive Charge Voltage (HVPC_WPST)</div> <div>-520 (V) 520</div>		
<div>Computed CCL (CCLC_PSTT)</div> <div>-9.5 (V) 0.5</div>			<div>Charge Negative From HVNC to LHT2</div>					
			<div>Shoot Negative From GUNV to LHT2</div>		<div>Alpha GUNV (GUNV_WPST) (V)</div>		<div>WPST Negative Charge Voltage (HVNC_WPST)</div> <div>-520 (V) 520</div>	
			<div>Charge Positive From RHT2 to HVPC</div>					
			<div>Shoot Positive From RHT2 to GUNV</div>					

Parameters		
DLIS Name	Description	Value
WPST-AE: WPP Shooting Tool		
U-COMM_VOLT	ASFS Comm Voltage	50 V
U-ERSB_ON_TIME	ERSB Voltage Hold Time	180 S
U-SEC_ON_TIME	SECURE Voltage Hold Time	10 S
U-SHOOT_VOLT_LIM	Shooting Voltage Limit	510 V
PSTE: Production Services Tractor Tool - Slim		
CCLG	Casing Collar Locator Gain	0DB

Format: WPP_Perfo	Vertical Scale: 1:200	Graphics File Created: 24-Oct-2009 19:26
-------------------	-----------------------	--

OP System Version: 17C0-154			
WPP_AS_GUN	17C0-154	WPST-AE	SRPC-3870_Q3_2009_OP17_V3
WPGRT-A	17C0-154	PSTS-S1	SRPC-3870_Q3_2009_OP17_V3
PSTS-S2	SRPC-3870_Q3_2009_OP17_V3	PSTE	SRPC-3870_Q3_2009_OP17_V3

Output DLIS Files			
DEFAULT	PERFO_Perfo	WPGRT_0861_LP	FN-90_PRODUCER 24-Oct-2009 19:26

Company: **Esso Australia Pty Ltd.**

**Schlumberger**

Well: **A-11a**

Field: **Snapper**

Rig: **Crane**

Country: **Australia**

MaxTrac / Perforating Platform  
2" HSD Perforation Record  
Perforation Record