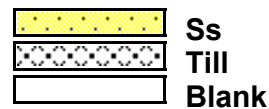
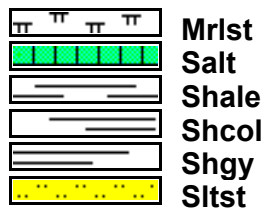
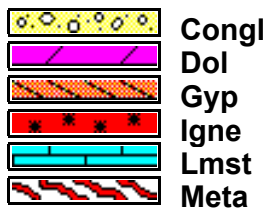
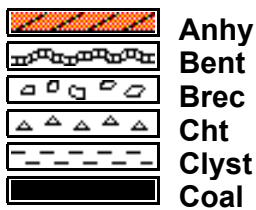
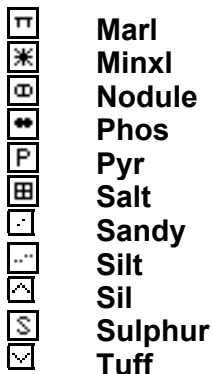
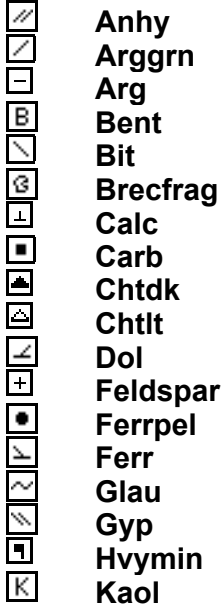


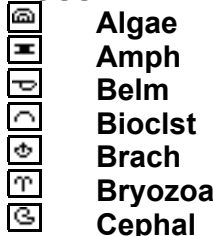
ROCK TYPES



MINERAL



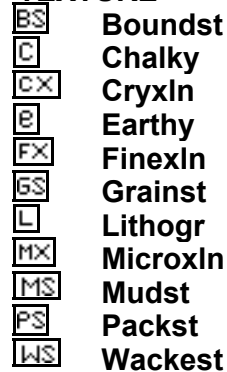
FOSSIL



STRINGER



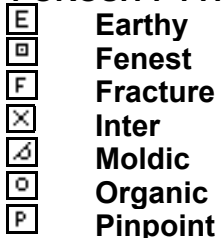
TEXTURE



ACCESSORIES

OTHER SYMBOLS

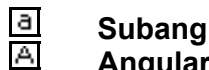
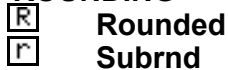
POROSITY TYPE



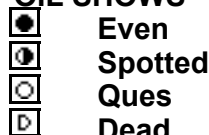
SORTING



ROUNDING



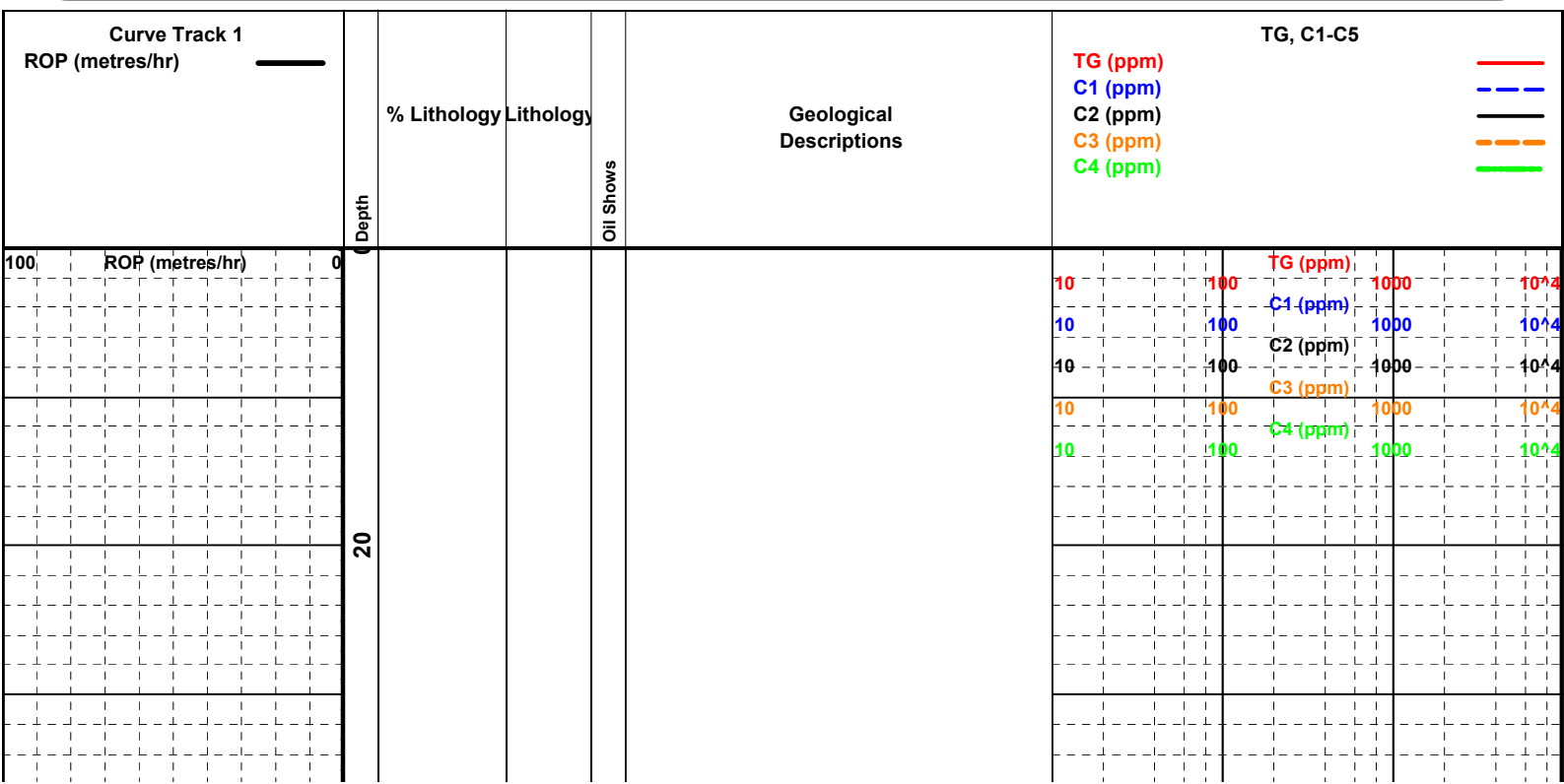
OIL SHOWS

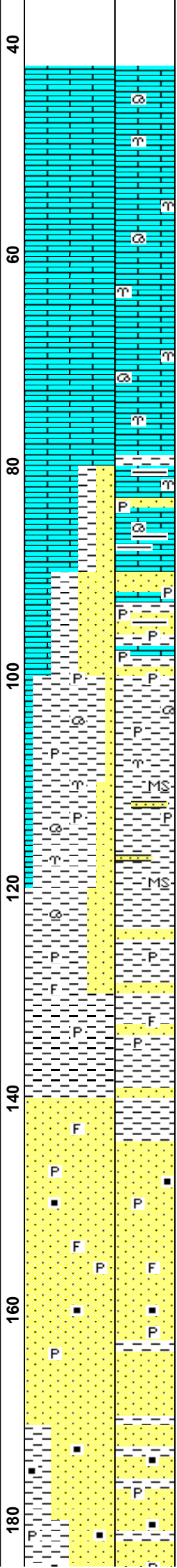
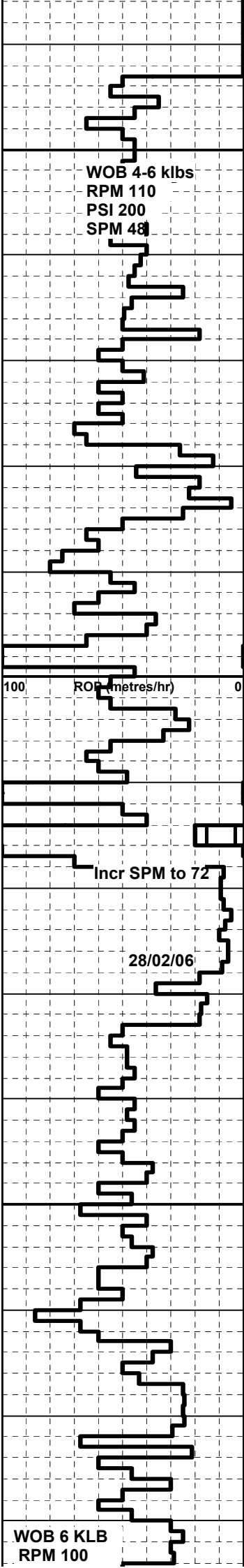


INTERVALS



EVENTS





SPUD PRITCHARD #1 on 27/03/2006

CALCARENITE: wh-off wh-lt gy, m gy i/p, occ orng gy, pred lse fri bry & shell frags, cmn calcil & arg mtx, occ calc cmt, tr-cmn m-c qtz gr

CALCARENITE: a/a, abnt m-c sbang-sbrd qtz gr w/ incr depth

CLAYSTONE: m gy-m brn gy, cmn fossil frags, sft, calc, intbd w/ lst, cmn qtz gr

SANDSTONE: lt gy-m gy-lt brn, occ orng, lse i/p, f-c sbang- rd, cmn frstd, cmn calc cmt, arg mtx, cmn pyr, cmn fe stng, tr coal liths

PYRITE: abnt-20%, micxln & cmt

CLAYSTONE: m dk gy-v dk brn, occ m brn, v sft, stky, v calc, cmn pyr, occ vf-c sbang-sbrd qtz gr, cmn bry/gast & shell frags

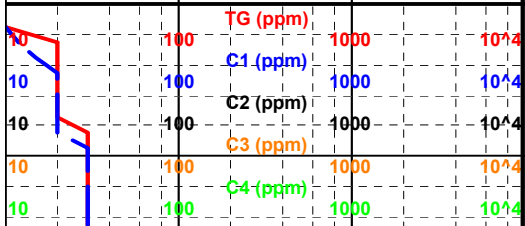
CLAYSTONE: m dk gy-v dk brn, occ m brn, v sft, stky, v calc, cmn pyr, occ vf-c sbang-sbrd qtz gr, cmn bry/gast & shell frags

CLAYSTONE: dk gy brn-gy brn, sft-oc v hd, com pyr, tr foss, tr lse qtz, v calc i/p

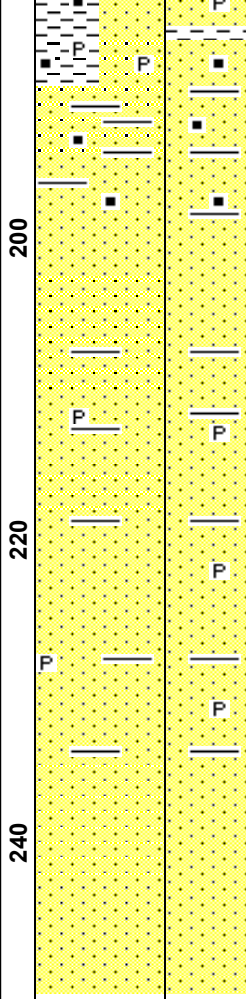
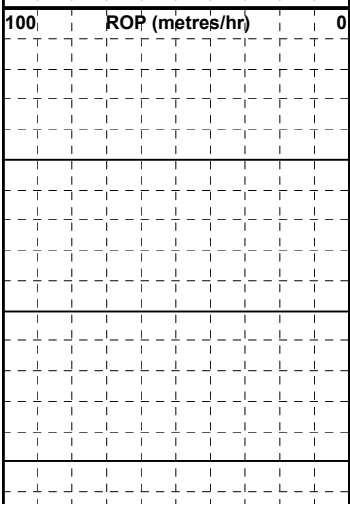
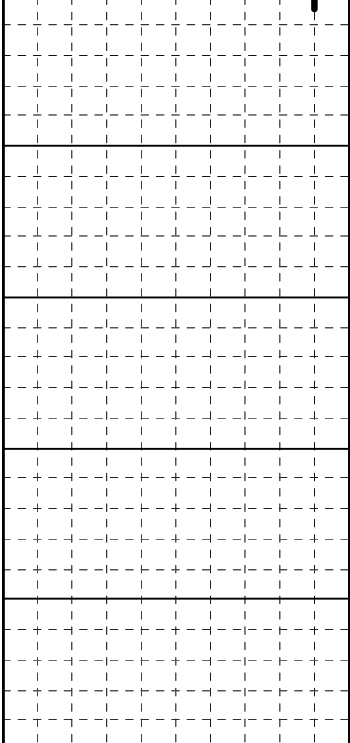
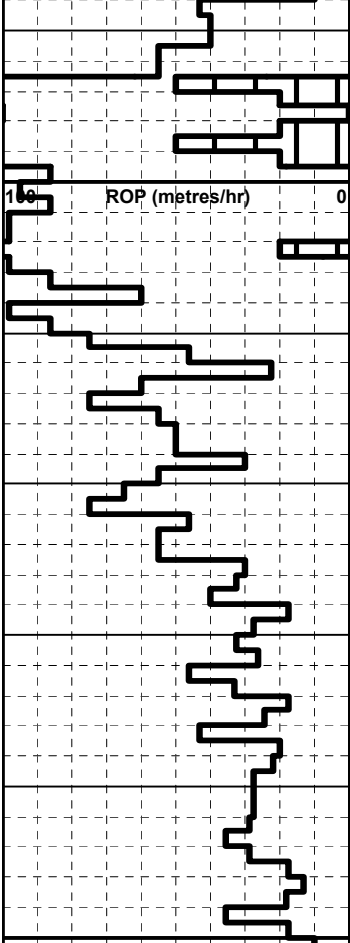
SANDSTONE: clr-v lt brn-v lt gy, trnsl-rr opq, f-crs dom f-m, mod srtd, ang-sunrnd dom subang, lse w/tr arg mtx, com-abnt lse wh mica flakes, tr foss frags, fr inf por

SANDSTONE: clr-v lt gy-v pl brn, f-m, w srtd, ang-rnd dom subrnd, lse, abnt lse crs mica flakes, tr-com carb silt, tr blk coal detritus, tr foss frags, tr lse pyr, gd inf por

CLAYSTONE: brn gy- dk brn, v sft-occ frm, amorph-subblky, v silty, calc, mod-v carb, tr coaly lam & frags, tr pyr, tr micas,



SPP 500 psi
SPM 2x36



SANDSTONE: cl-r-v lt gy -v pl yel-occ wh, transl-rr opq, f-gran dom m- v crs, subang-w rnd dom rnd, w srtd, gen lse-unconsol, rr pyr, tr mica, gd-v gd inf por

SANDSTONE: cl-r-v lt gy-occ wh, m-gran dom crs-v crs, subang-rnd, mod-w srtd, gen lse grs, tr sil cmt, tr mica, gd-v gd inf por

SANDSTONE: cl-r-v lt gy-occ wh, transl-occ opq, vf-crs dom f-m, subang-subrnd, mod srtd, com-abnt lse mica, tr wk sil cmt, gen lse-unconsol, tr blk coal mtl, tr brn arg mtl, fr inf por

TG (ppm) 10 100 1000 10⁴

C1 (ppm) 10 100 1000 10⁴

C2 (ppm) 10 100 1000 10⁴

C3 (ppm) 10 100 1000 10⁴

C4 (ppm) 10 100 1000 10⁴

TG (ppm) 10 100 1000 10⁴

C1 (ppm) 10 100 1000 10⁴

C2 (ppm) 10 100 1000 10⁴

C3 (ppm) 10 100 1000 10⁴

C4 (ppm) 10 100 1000 10⁴