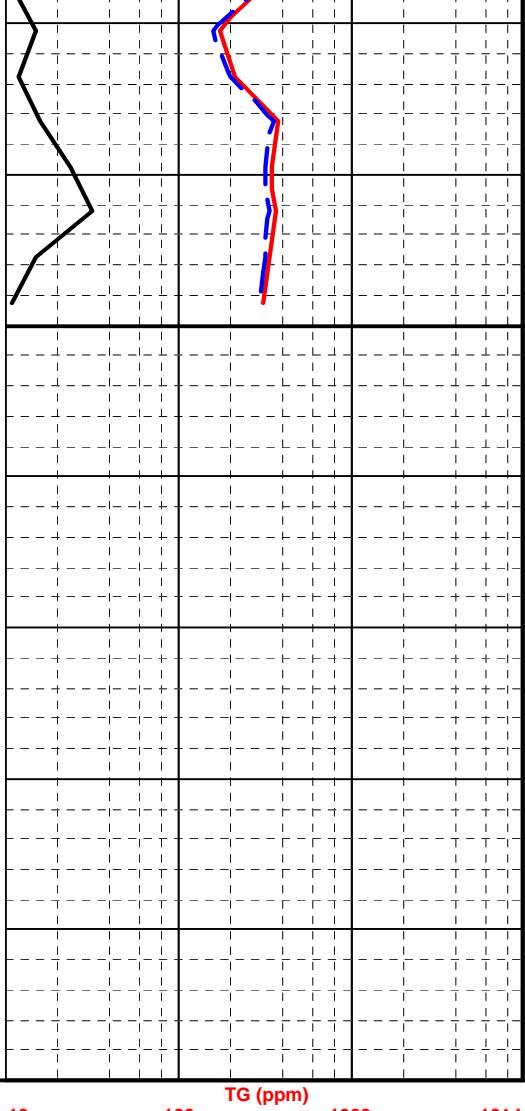


CLAYSTONE: mid gy-med dk gy,



10	100	TG (ppm)	1000	10 <sup>4</sup>
10	100	C1 (ppm)	1000	10 <sup>4</sup>
10	100	C2 (ppm)	1000	10 <sup>4</sup>
10	100	C3 (ppm)	1000	10 <sup>4</sup>
10	100	C4 (ppm)	1000	10 <sup>4</sup>