

Curve Track 1
ROP (metres/hr)

% Lithology Lithology

Geological Descriptions

TG (ppm)
C1 (ppm)
C2 (ppm)
C3 (ppm)
C4 (ppm)

TG, C1-C5

—
—
—
—

Depth

Oil Shows

02/04/06
NB#2 VAREL
IADC 1-1-7
3 x 12 jets
IN : 836 m
OUT : 1158 m
322m/37 hrs
8-6-WT-A-E-I-ER-PR

WOB 6-8 KLB
RPM 95
SPP 600 PSI
1 x 50 SPM

INCR SPM 2 x 47

WOB 10-12KLB
RPM 92
SPP 625 PSI
2 x 47 SPM

100 ROP (metres/hr)

840

860

880

900

920

940

960

DISPLACE MOD TO RCT OBTAIN
DRILL AHEAD 8-1/2" HOLE

POOR QUALITY SAMPLES

SANDSTONE:clr=v lt gy-occ pl yel
brn, f-crs dom f-m, subang-sub
rnd, mod srted, tr arg mtx washing
out, tr sil cmt, tr liths, fr inf por

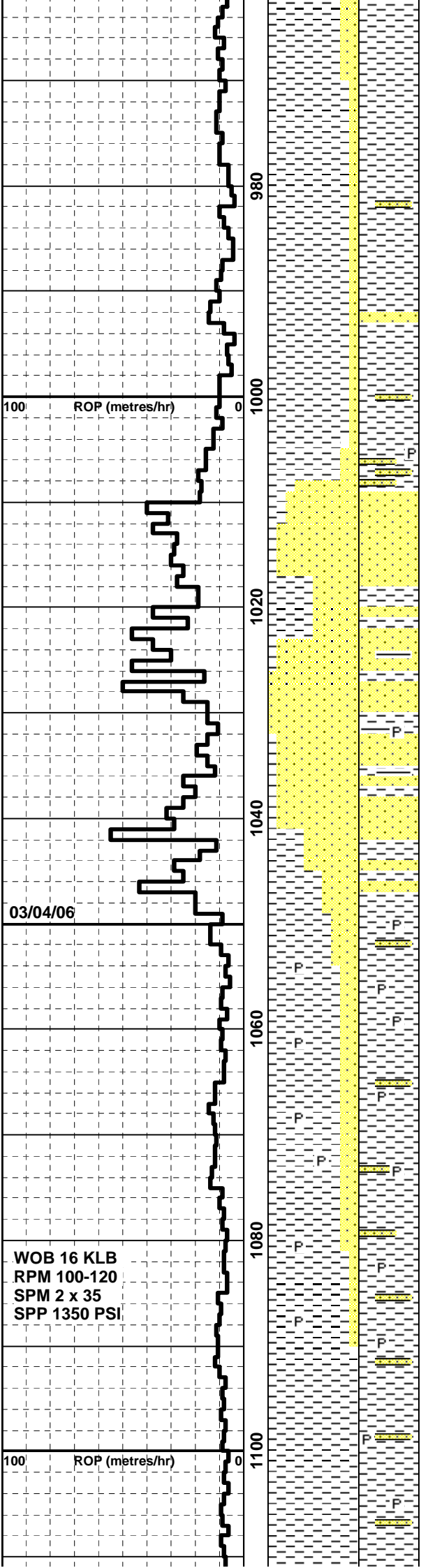
SANDSTONE:clr=v lt gy-occ pl yel
brn, f-crs dom f-m, subang-sub
rnd, mod srted, tr arg mtx washing
out, tr sil cmt, tr liths, fr-gd inf por

SANDSTONE: clr-v lt gy-v pl brn,
f-crs incr crs i/p, subang-rnd, mod-w
srted, incr tr pl brn arg mtx washing
out, incr lse mica flakes, tr sil cmt
gen lse, tr liths, fr inf por

SANDSTONE: clr-v lt gy-v pl brn-occ
opq wh, f-crs dom m, subang-rnd,
mod srted, incr pl brn arg mtx
washing out, tr lse mica, tr liths, gen
lse, fr inf por

SANDSTONE: clr-v lt gy-v pl brn-occ
opq wh, f-crs dom m, subang-rnd,
mod srted, incr pl brn arg mtx
washing out, tr lse mica, tr liths, gen
lse, fr inf por

10	100	TG (ppm)	1000	10 ⁴
10	100	C1 (ppm)	1000	10 ⁴
10	100	C2 (ppm)	1000	10 ⁴
10	100	C3 (ppm)	1000	10 ⁴
10	100	C4 (ppm)	1000	10 ⁴



CLAYSTONE: m brn gy- occ m gy, v sft-occ frm, amorph-subblky, stky, disp, silty i/p grdg to arg sltst, tr qtz gr, sl calc, tr carb, rr pyr, Note: sample washing out

CLAYSTONE: gen a/a, grdg to sltst w/incr depth, tr pyr

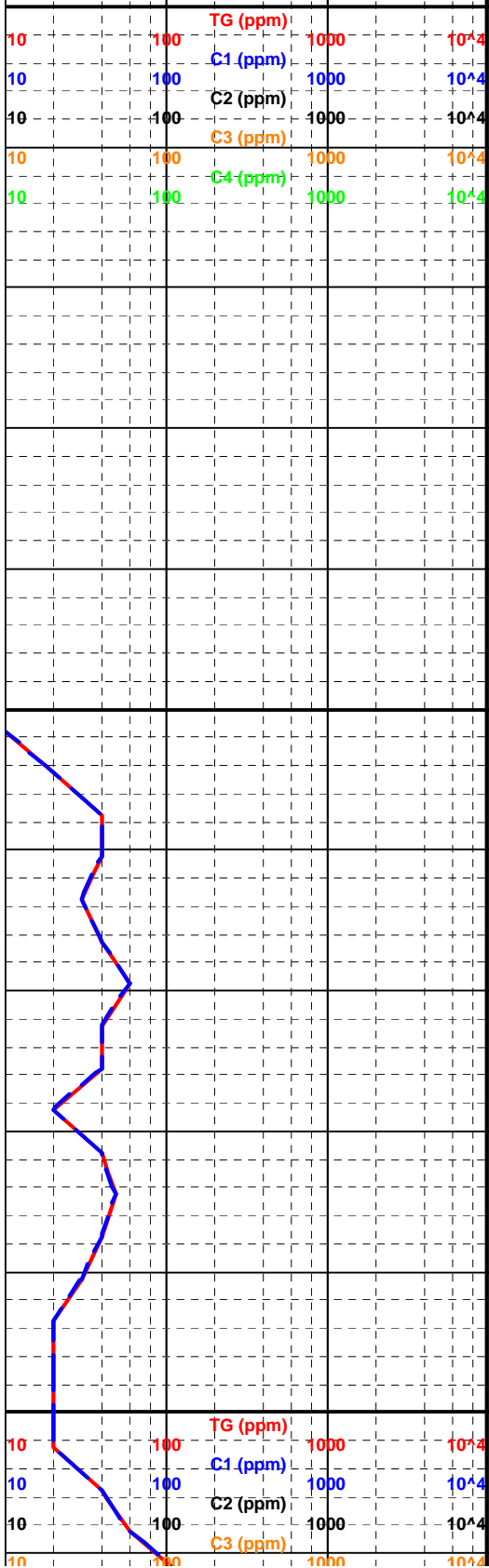
SANDSTONE: clr-v lt gy-v pl brn-occ opq wh, f-crs dom m-c, sbang-sbrnd, mod srted, pl brn arg mtx - washing out, tr lse mica, tr liths, gen lse, fr inf por, intebdd w/ Claystone, a/a

SANDSTONE: gen a/a, fining w/ incr depth bcmg pred m, com sbrnd, mod wl srted, tr pyr, tr coal det, tr dol, gd inf por

CLAYSTONE: lt gy brn-med brn gy, silty-aren i/p, disp-occ frm, micmic, com lse pyr nods, tr carb mtl, com lse crs qtz grs, non-calc

CLAYSTONE: med brn gy-gy brn, sft-frm, v silty i/p, amorph-blky, tr carb mtl & lam, com lse pyr nods,

CLAYSTONE: med gry brn-brn gy-occ brn, silty, disp-frm, amorph-subblky, incr carb mtl, lam & flecks, micmica,com m sand inclus, calc i/p



100 ROP (metres/hr)

03/04/06

WOB 16 KLB
RPM 100-120
SPM 2 x 35
SPP 1350 PSI

100 ROP (metres/hr)

10 100 TG (ppm) 1000 10⁴

10 100 C1 (ppm) 1000 10⁴

10 100 C2 (ppm) 1000 10⁴

10 100 C3 (ppm) 1000 10⁴

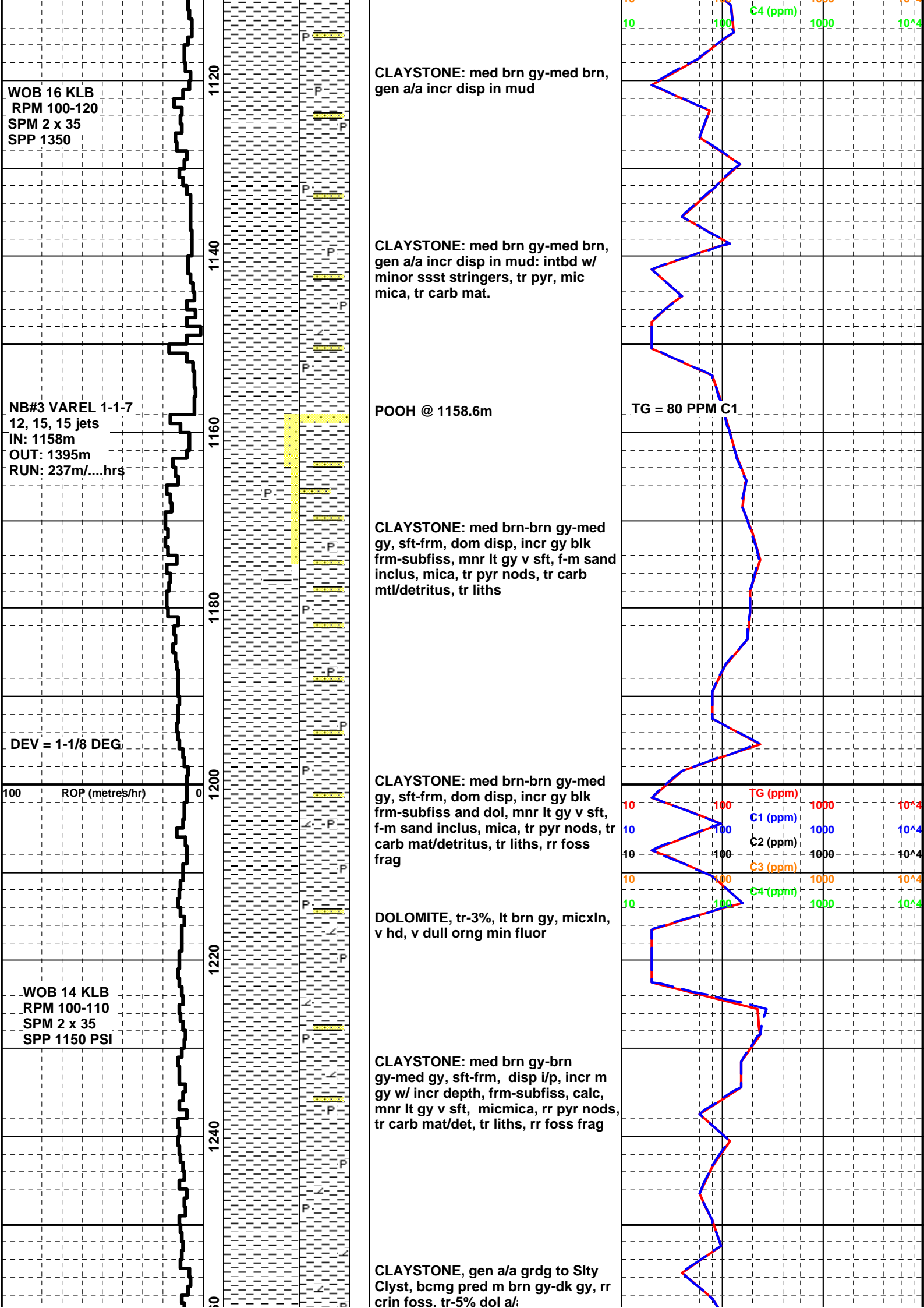
10 100 C4 (ppm) 1000 10⁴

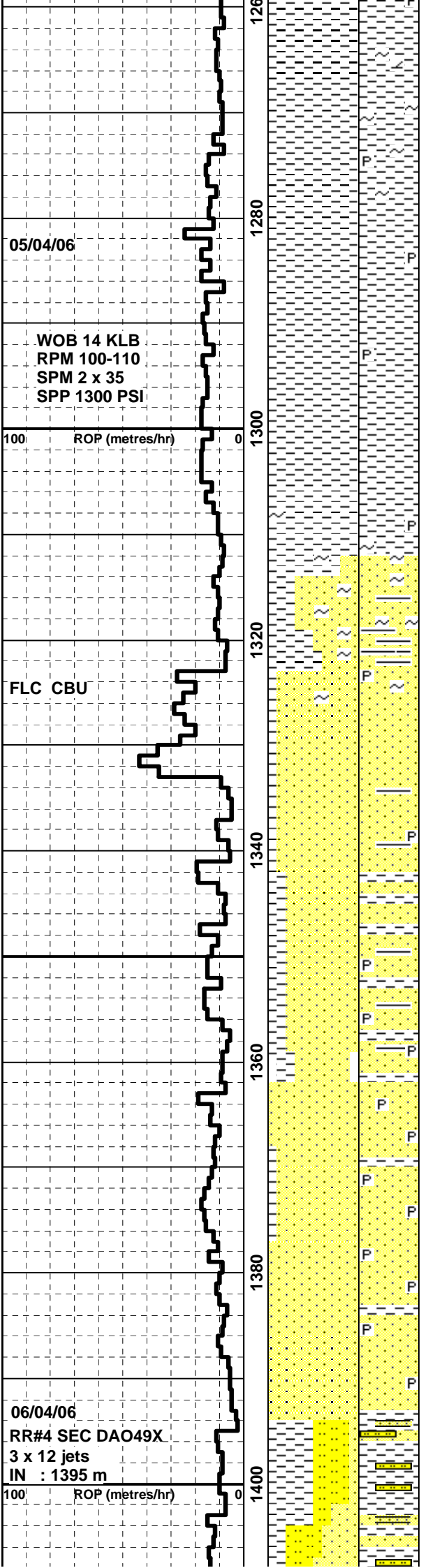
10 100 TG (ppm) 1000 10⁴

10 100 C1 (ppm) 1000 10⁴

10 100 C2 (ppm) 1000 10⁴

10 100 C3 (ppm) 1000 10⁴





CLAYSTONE , m gy brn- v dk gy, frm, sbfiss, rr-tr glau, sl carb i/p, calc, occ v thn lam of qtz sltst, tr carb f-m ssd, tr dol a/a, grdg i/p to carb shale & silty Claystone

CLAYSTONE: gy brn-med dkgy-dk gy, frm-hd, blkgy-subfiss, sli calc, tr qtz silt & sand incl, micmic,

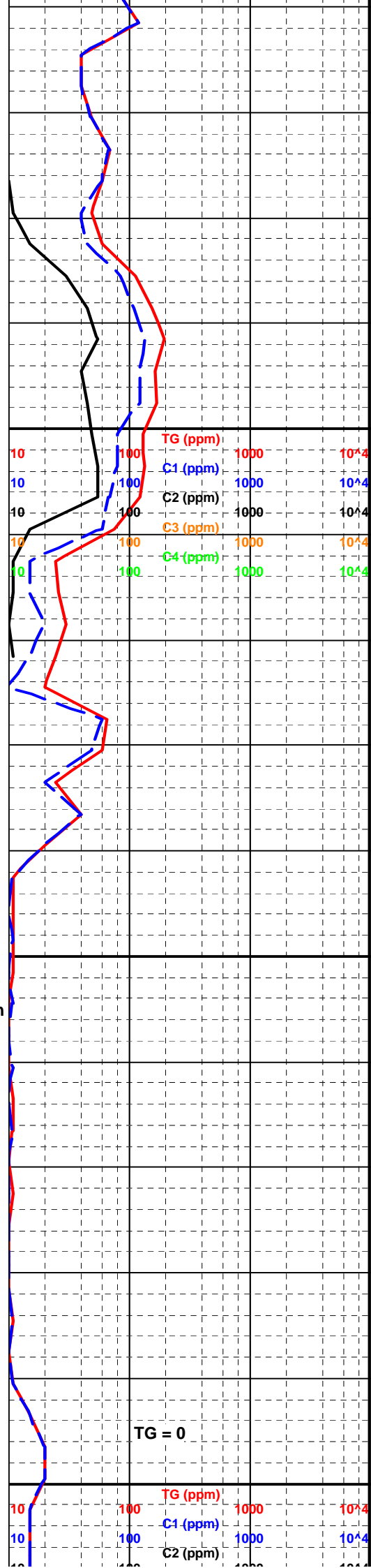
CLAYSTONE: gy-med dk gy-dk gy frm-hd, blkgy-fiss, com silt lam, tr carb mtl/lam, incr tr glauc grs, tr qtz silt/sd, grdg i/p silty Clayst

SANDSTONE:

SANDSTONE: clr-v lt gy-pl grn-occ opq wh, transl-transp, f-crs dom med,subang-subrnd, mod-w srtd, lse w/tr sil cmt, tr gy brn arg mtx, tr lse pyr, tr glauc grs, gd-v gd inf por, no oil show

SANDSTONE: clr-v lt gy-pl grn-occ opq wh, transl-transp, f-crs dom med,subang-subrnd, mod-w srtd, lse w/tr sil cmt, tr gy brn arg mtx, minor bwn dispersive cly and gy-grn firm sfiss claystone tr lse pyr, tr glauc grs, gd-v gd inf por, no oil show

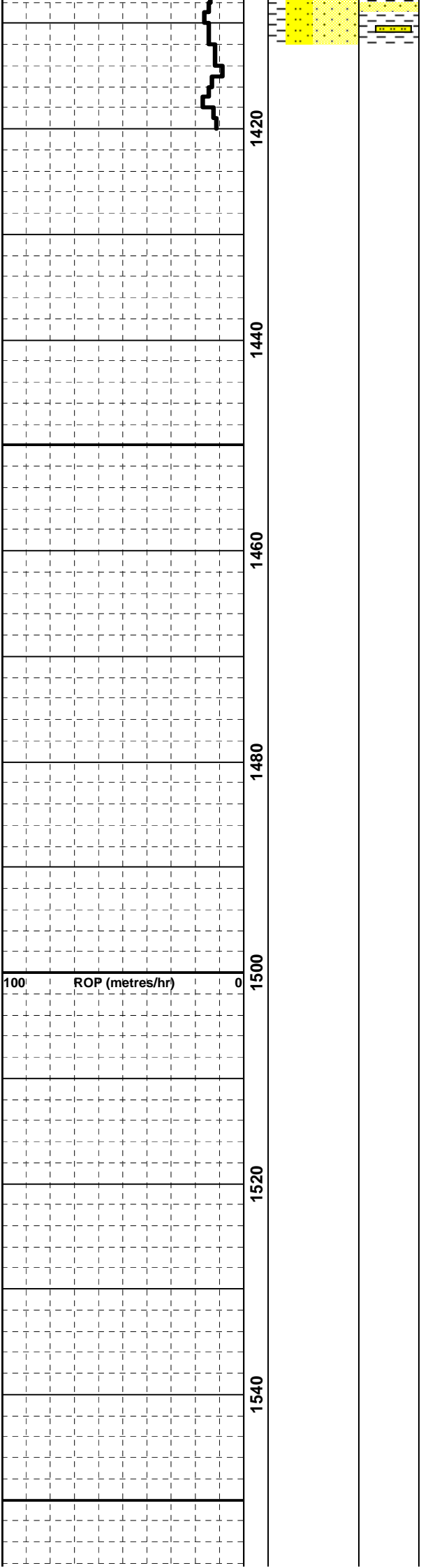
POOH 1395 m



TG (ppm)	1000	10 ⁴
C1 (ppm)	1000	10 ⁴
C2 (ppm)	1000	10 ⁴
C3 (ppm)	1000	10 ⁴
C4 (ppm)	1000	10 ⁴

TG = 0

TG (ppm)	1000	10 ⁴
C1 (ppm)	1000	10 ⁴
C2 (ppm)	1000	10 ⁴



Depth (m)	TG (ppm)	C1 (ppm)	C2 (ppm)	C3 (ppm)	C4 (ppm)
1420	100	100	100	100	100
1430	100	100	100	100	100
1440	100	100	100	100	100
1450	100	100	100	100	100
1460	100	100	100	100	100
1470	100	100	100	100	100
1480	100	100	100	100	100
1490	100	100	100	100	100
1500	100	100	100	100	100
1510	100	100	100	100	100
1520	100	100	100	100	100
1530	100	100	100	100	100
1540	100	100	100	100	100