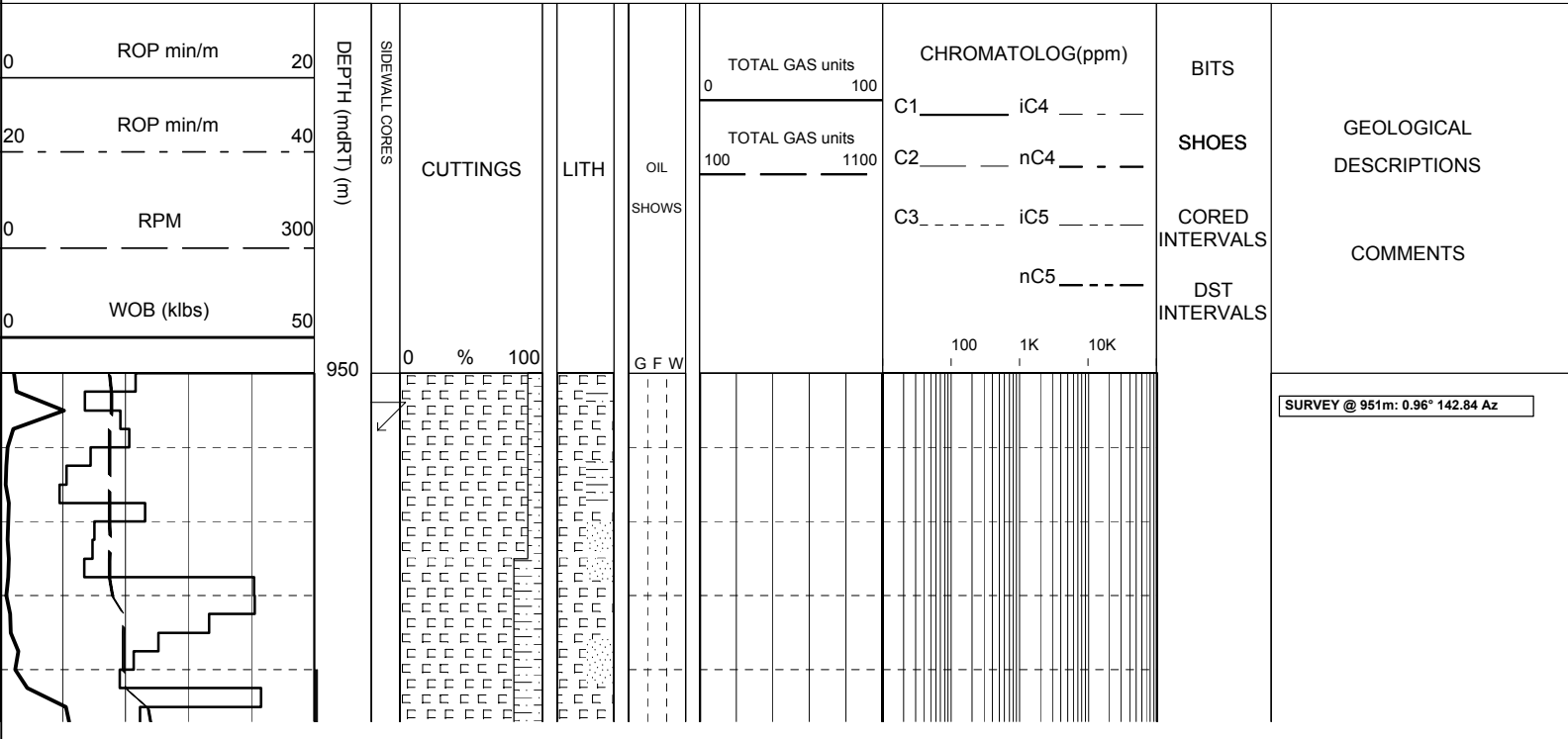


COMPANY	ORIGIN ENERGY	SPUD DATE	26-08-05
RIG	CENTURY 7	TD DATE	
AREA	PEP 154	TD DRILLER	TD
STATE/COUNTRY	VICTORIA, AUSTRALIA	TD WIRELINE	
LOCATION	38°35'11.98"S 142°51'34.06"E	LOGGED FROM	SPUD
GROUND LVL	9.65m	LOGGED TO	
RT HEIGHT	5.3m	FINAL STATUS	STATUS
DEPTH REF	ROTARY TABLE		

WELL CONFIGURATION				LOGGING ENGINEERS		SCALE 1/ 200
BIT SIZE	HOLE DEPTH (m)	CASING SIZE	CASING DEPTH (m)	Rory McLellan		
311mm	499.2	245mm	495.6	Ben Morris		
216mm	XXXX			W.S.G. John Hobday		

SYMBOLS		ABBREVIATIONS		MUD DATA	
	NEW BIT RUN	NO SHOW	NO SHOW	MW	MUD WEIGHT
	NEW CORE BIT RUN	WEAK SHOW	WEAK SHOW	MG	MUD GRADIENT
	CASING SHOE	FAIR SHOW	FAIR SHOW	FV	FLUID VISCOSITY
	LINER HANGER	GOOD SHOW	GOOD SHOW	PV	PLASTIC VISCOSITY
	MUD LOSS / MUD GAIN			YP	YIELD POINT
	Recovered SIDEWALL CORES			Gel	GEL STRENGTH
	Not Recovered			pH	ACIDITY
				F	FILTRATE
				Ck	CAKE THICKNESS
				S	SALINITY
				SD	SAND CONTENT
				O	OIL CONTENT
				WL	WATER LOSS
				Sol	SOLIDS CONTENT
				Cl	CHLORIDES
				KCl	POTASSIUM CHLORIDE
				Ca	CALCIUM CONTENT

	CLAYSTONE		MEDIUM SST		LIMESTONE		GYPSUM		TUFF		FERRUGINOUS		CALCAREOUS		GLAUCONITE		MICROFOSSILS
	SILTSTONE		FINE SANDSTONE		DOLOMITIC LIMES		HALITE		VOLCANIC ROCK		FORAMINIFERA		DOLOMITIC		MICACEOUS		FOSSILS
	CONGLOMERATE		VF SANDSTONE		DOLOMITE		CEMENT		IGNEOUS ROCK		BRYOZOA		CARBONACEOUS		PYRITE		LITHICS
	COARSE SST		BRECCIA		COAL		CALCARENITITE		METAMORPHICS		FELDSPAR		CHERTY		BROKEN FOSSILS		SIDERITE



SLIDING
958m-967.5m

NO GAS

SILTSTONE: pred grysh brn, arg grd to
CLYST i/p, mnr calc frags, occ nod pyr,
tr glauc grs, sft-disp, sbbiky-amorph.

WOB 4-21 klbs
RPM 154-333
SPP 865-1517 psi
FLW 380-479 gpm

SLIDING
978m-982m

SANDSTONE: clr-trnsl, f-crs, occ v crs
frstd grs, pr srt, sbrnd-nd, wk sil cmt,
cln & lse, fr-gd inf por, no fluor.

SLIDING
988m-996m

SILTSTONE: brnsh gry, arg grd to
CLYST i/p, com calc inclcs, mnr nod pyr,
occ glauc grs, tr foss & shell frags,
sft-disp, sbbiky-amorph.

SLIDING
1000.5m-1005.5m

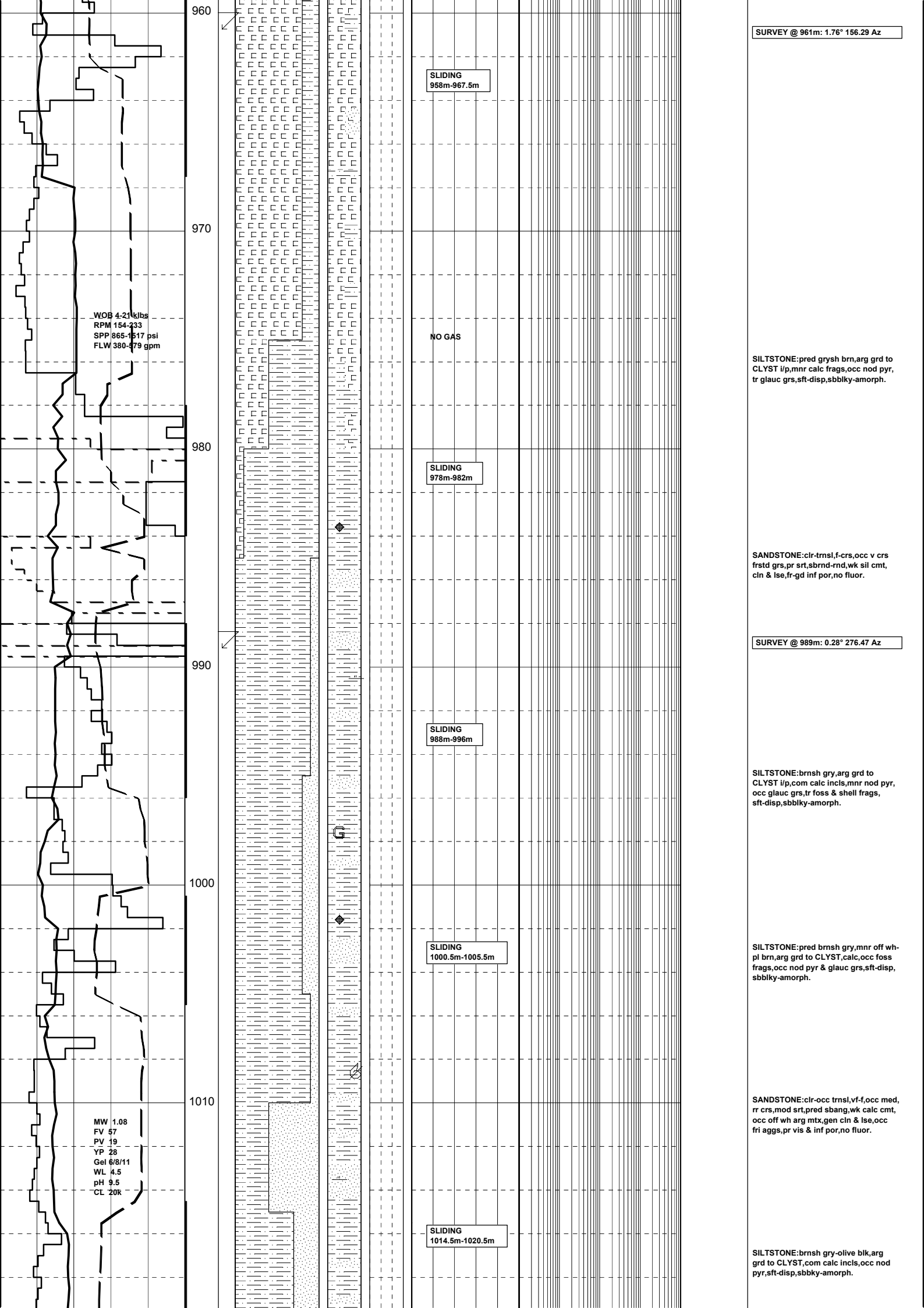
SILTSTONE: pred brnsh gry, mnr off wh-
pl brn, arg grd to CLYST, calc, occ foss
frags, occ nod pyr & glauc grs, sft-disp,
sbbiky-amorph.

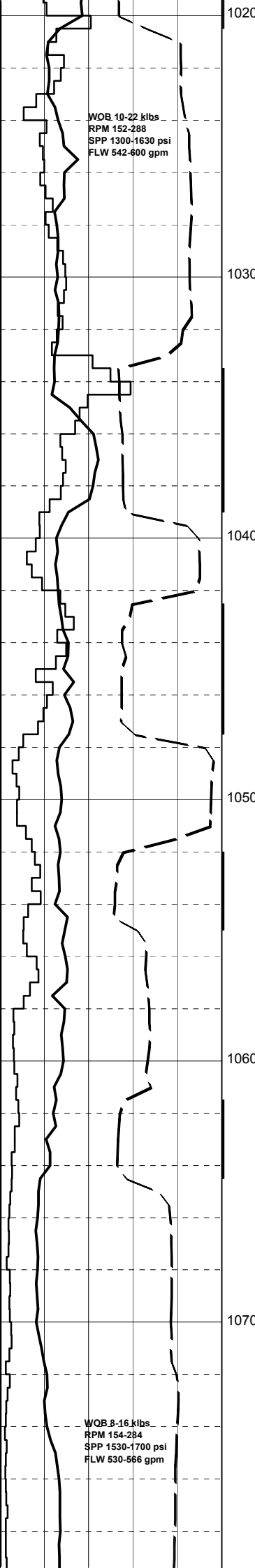
SLIDING
1014.5m-1020.5m

SANDSTONE: clr-occ trnsl, vf-f, occ med,
rr crs, mod srt, pred sbang, wk calc cmt,
occ off wh arg mtg, gen cln & lse, occ
fri aggs, pr vis & inf por, no fluor.

SILTSTONE: brnsh gry-olive blk, arg
grd to CLYST, com calc inclcs, occ nod
pyr, sft-disp, sbbiky-amorph.

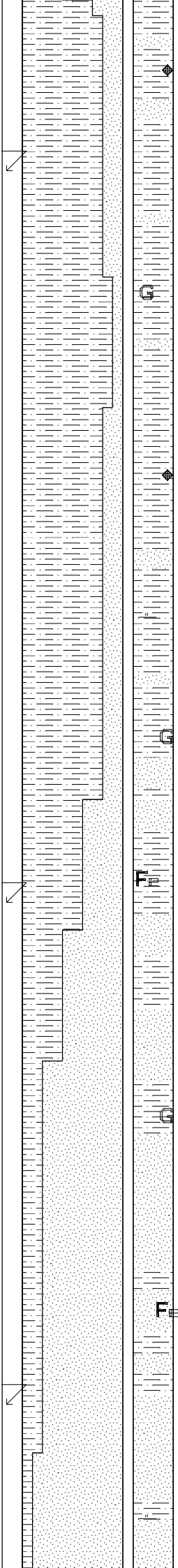
MW 1.08
FV 57
PV 19
YP 28
Gel 6/8/11
WL 4.5
pH 9.5
CL 20R



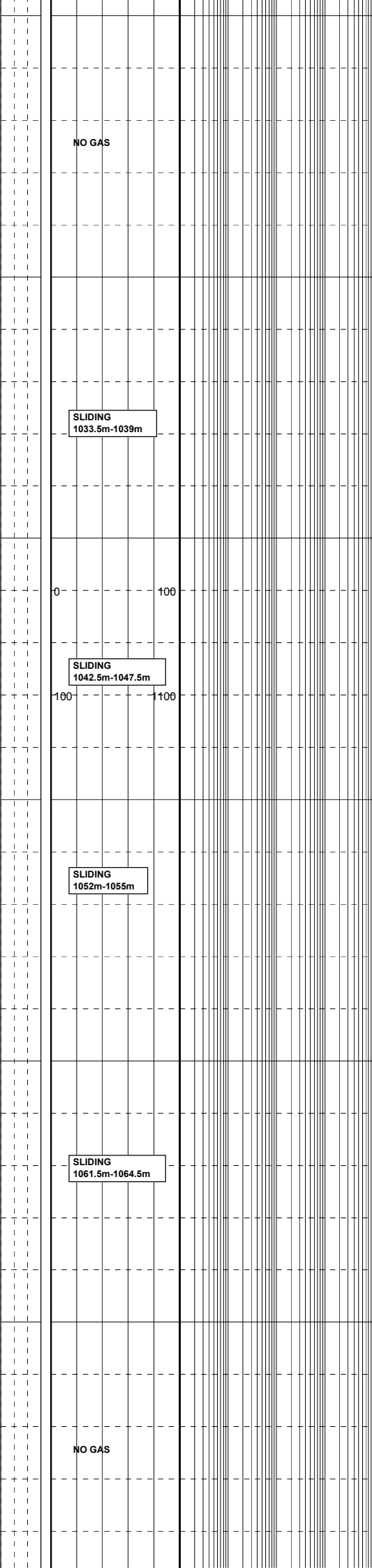


WOB 10-22 klbs
RPM 152-288
SPP 1300-1630 psi
FLW 542-600 gpm

WOB 8-16 klbs
RPM 154-284
SPP 1530-1700 psi
FLW 530-566 gpm



G
 G
 F
 G
 F
 G
 F



NO GAS

SLIDING
1033.5m-1039m

SLIDING
1042.5m-1047.5m

SLIDING
1052m-1055m

SLIDING
1061.5m-1064.5m

NO GAS

SANDSTONE:pred clr,vf-occ f,rr med-crs,mod wl srt,sbang-mnr sbrnd,wk calc cmt,occ nod pyr,cln & unconsp,pr inf por, no fluor.

SURVEY @ 1026m: 9.37° 68.23 Az

SILTSTONE:brnsh blk-olv blk,arg grd to CLYST,com calc,mnr nod pyr,tr glauc grs,sft-disp,sbbiky-amorph.

SANDSTONE:clr-occ trnsl,pred vf, occ f-med,mod wl srt,sbang-mnr sbrnd,wk calc cmt,occ nod pyr,cln & lse,pr inf por,no fluor.

SILTSTONE:brnsh blk-olv blk,agr g/t CLYST,com calc frags,com glauc grs,sft-disp,sbbiky-amorph.

SANDSTONE:trnsl-trnsl yelsh brn,mnr frstd,vf-v crs,pred med-crs,pr srt,ang-sbrnd,gen sbang,wk sil cmt,com Fe stng, cln & unconsp,gd inf por,no fluor.

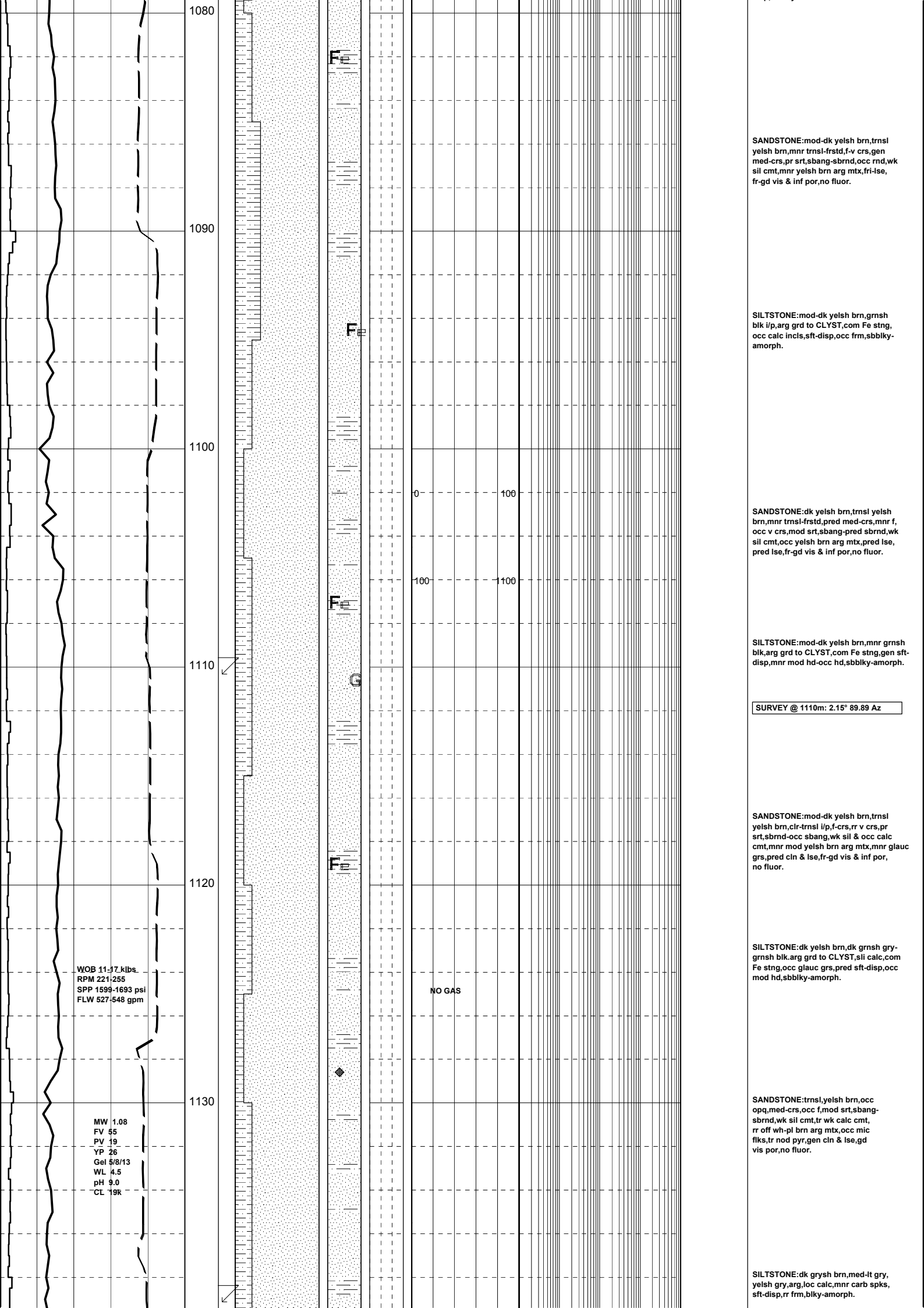
SURVEY @ 1054m: 3.72° 64.51 Az

SILTSTONE:dk grnsh gry-olv blk,mnr mod brn,arg grd to CLYST,glauc i/p,mnr Fe stng,sft-disp,sbbiky-amorph.

SANDSTONE:yelsh brn,trnsl yelsh brn, trnsl-clr,occ frstd,med-v crs,pr srt, sbrnd-sbang,occ ang,wk sil cmt,mnr yelsh brn arg mt,x,unconsp & lse,fr-gd inf por,no fluor.

SURVEY @ 1073m: 2.14° 82.47 Az

SILTSTONE:olv blk-grnsh blk,yelsh brn-mod brn,arg grd to CLYST,calc i/p, com Fe stng,occ nod pyr,sft-frm,occ disp,sbbiky-sbfiss.



SANDSTONE:mod-dk yelsh brn,tnsl yelsh brn,mnr tnsl-frstd,f-v crs,gen med-crs,pr srt,sbang-sbrnd,occ rnd,wk sil cmt,mnr yelsh brn arg mtx,fri-lse, fr-gd vis & inf por,no fluor.

SILTSTONE:mod-dk yelsh brn,grnsh blk i/p,arg grd to CLYST,com Fe stng, occ calc incl, sft-dsp,occ frm,sbbiky-amorph.

SANDSTONE:dk yelsh brn,tnsl yelsh brn,mnr tnsl-frstd,pred med-crs,mnr f, occ v crs,mod srt,sbang-pred sbrnd,wk sil cmt,occ yelsh brn arg mtx,pred lse, pred lse,fr-gd vis & inf por,no fluor.

SILTSTONE:mod-dk yelsh brn,mnr grnsh blk,arg grd to CLYST,com Fe stng,gen sft-dsp,mnr mod hd-occ hd,sbbiky-amorph.

SURVEY @ 1110m: 2.15° 89.89 Az

SANDSTONE:mod-dk yelsh brn,tnsl yelsh brn,clr-tnsl i/p,f-crs,rr v crs,pr srt,sbrnd-occ sbang,wk sil & occ calc cmt,mnr mod yelsh brn arg mtx,mnr glauc grs,pred cln & lse,fr-gd vis & inf por, no fluor.

SILTSTONE:dk yelsh brn,dk grnsh gry-grnsh blk,arg grd to CLYST,sil calc,com Fe stng,occ glauc grs,pred sft-dsp,occ mod hd,sbbiky-amorph.

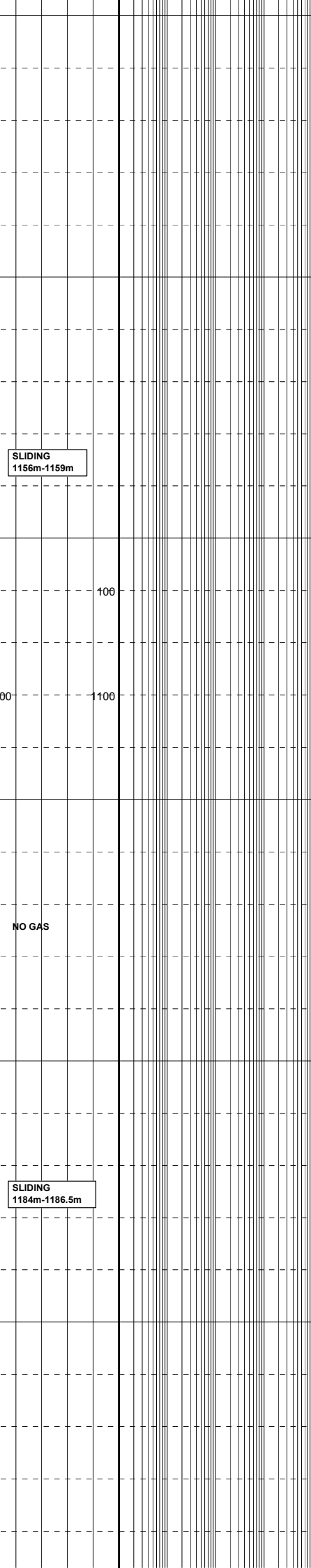
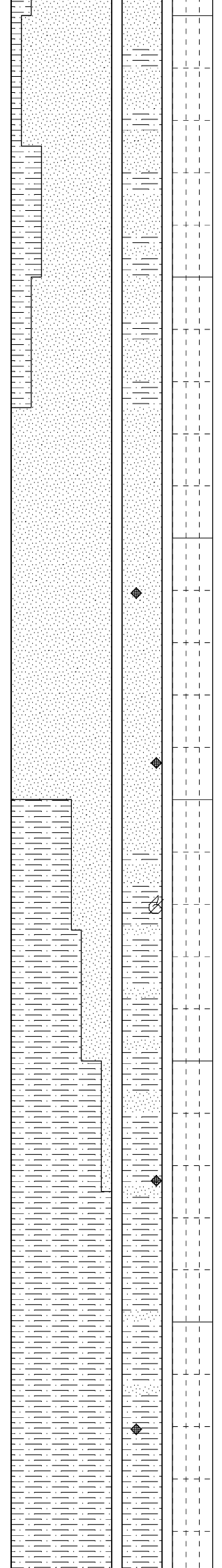
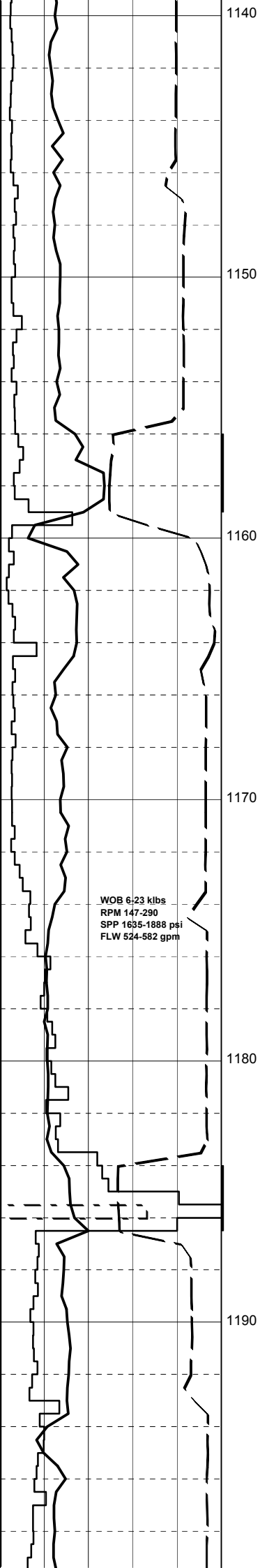
SANDSTONE:tnsl,yelsh brn,occ opq,med-crs,occ f,mod srt,sbang-sbrnd,wk sil cmt,tr wk calc cmt, rr off wh-pl brn arg mtx,occ mic fiks,tr nod pyr,gen cln & lse,gd vis por,no fluor.

SILTSTONE:dk grysh brn,med-lt gry, yelsh gry,arg,loc calc,mnr carb spks, sft-dsp,rr frm,blky-amorph.

WOB 11-17 klbs
RPM 221-255
SPP 1599-1693 psi
FLW 527-548 gpm

MW 1.08
FV 55
PV 19
YP 26
Gel 5/8/13
WL 4.5
pH 9.0
CL 19K

NO GAS



SANDSTONE:lt-med yelsh brn,trnsl,
f-crs,dom med,sbang-sbrnd,ang i/p,
wk sil cmt,tr pl brn arg mtx,occ
mic flks,tr nod pyr,glauc,lse &
cln,fr-gd por,no fluor.

SILTSTONE:lt-med gry,dk grnsh
gry,arg,sli calc,tr carb spks,
sft-disp,sbbiky-amorph.

SANDSTONE:trnsl-trnsp,yel brn,Fe stng,
f-crs,pred med grs,mod-wl srt,sbang-pred
sbrnd,wk sil cmt,tr arg mxt,tr glauc,
tr nod pyr,cln lse qtz grs,fr inf por,
no fluor.

SANDSTONE:trnsl-trnsp,yel brn,
Fe stng,f-crs,pred med grs,mod-wl
srt,sbang-pred sbrnd,rr pry cmt,
wk sil cmt,tr arg mtx,tr nod pyr,
micmic,cln lse qtz grs,fr inf
por,no fluor.

SILTSTONE:med-dk gry,ovl gry,
arg,grd to CLYST i/p,com pyr,tr
brn & blk liths,sft-disp,sbbiky-
amorph.

SILTSTONE:lt-med brnsh-gry,olv-
gry,arg,sli calc,tr pyr,foss mat,
sft-disp,sbbiky-amorph.

SANDSTONE:trnsl-clr,off wh,pl
yelsh brn,vf-med,dom f,mod srt,
sbang-sbrnd,tr ang,tr sil cmt,
com pyr cmt,tr med brn arg mtx,
rr nod pyr,tr foss frags,gen cln
& lse,occ v hd aggs,fr-gd inf
por,nil-ti inf por,no fluor.

SILTSTONE:med-dk gry,olv gry,
med brn i/p,arg,loc calc,tr glauc,
pyr,mnr carb spks & flks,sft-disp,
frm i/p,sbbiky-amorph.



