

IDEAL Version: ID13_0C_14

IDF

ARC8A-AA

id13_0c_02

Format: LWD RT GVR SONIC

Vertical Scale: 1:500

Graphics File Created: 25-Nov-2008 04:12

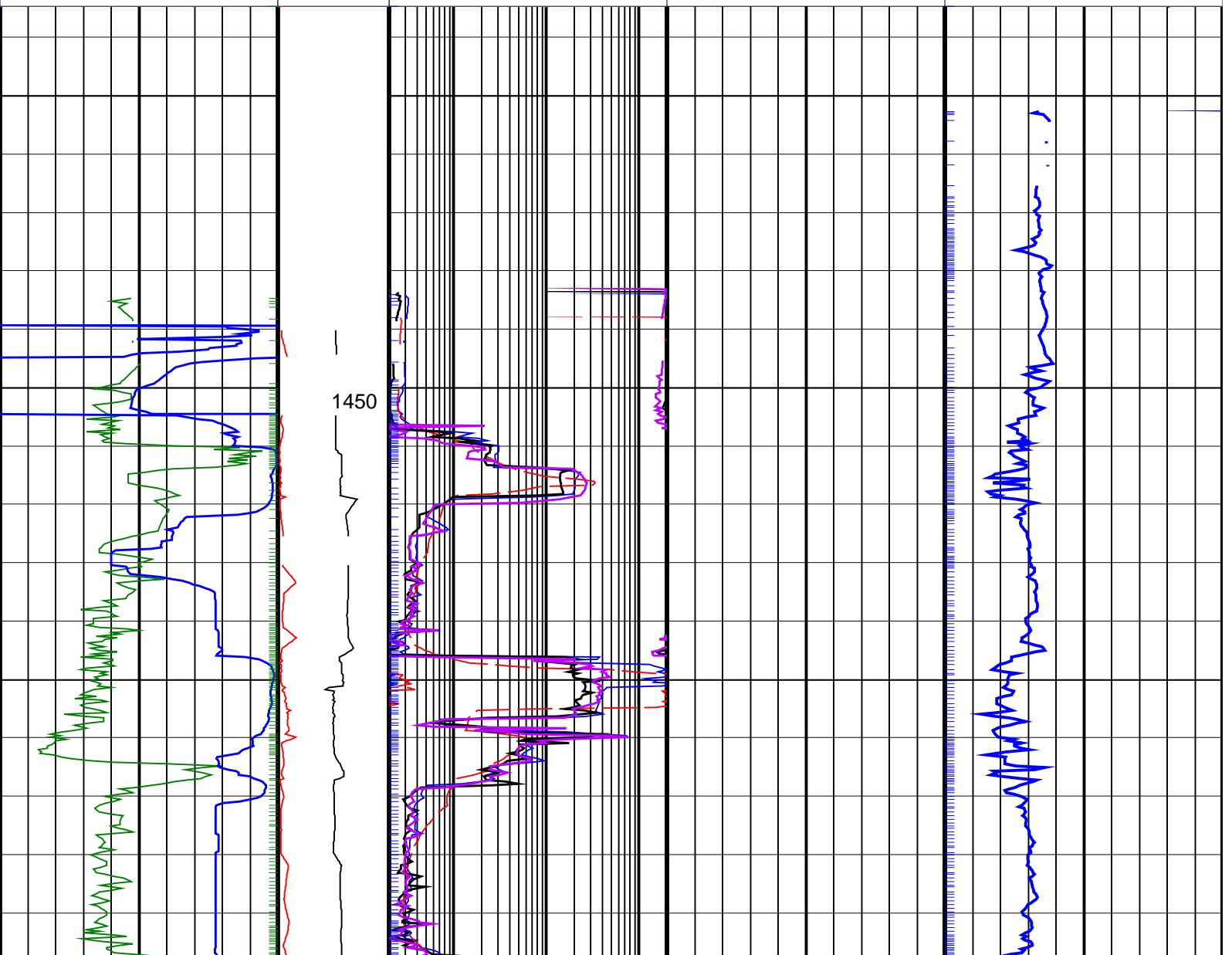
PIP SUMMARY

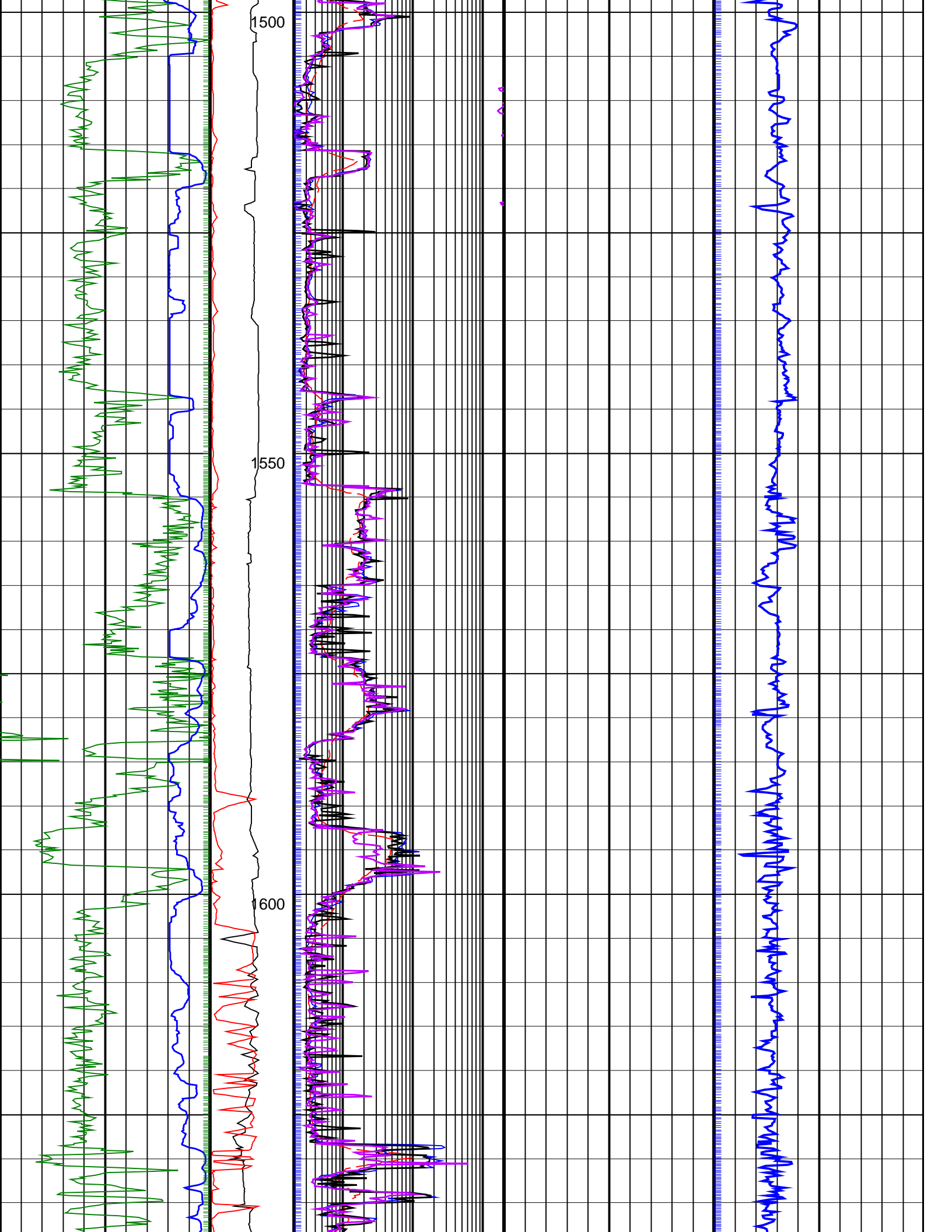
Delta-T Samples \uparrow

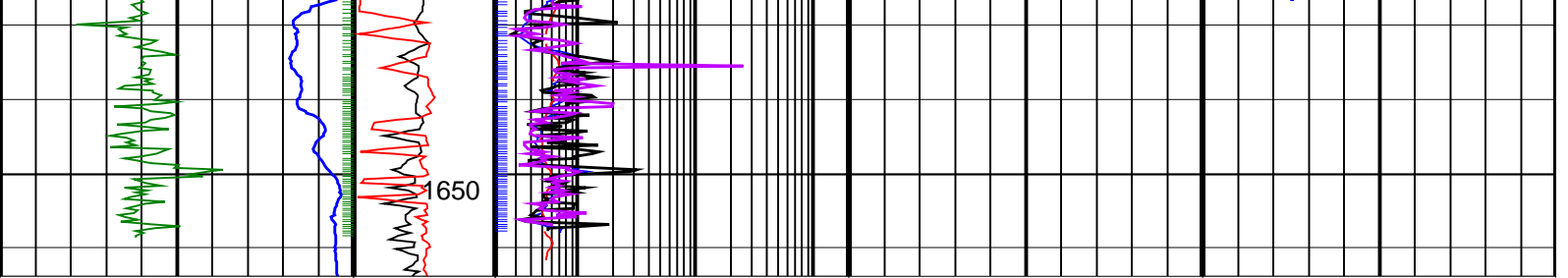
\uparrow GRRR_R PIP

\uparrow RING_TR PIP

RAB Gamma Ray, Real-Time (GR_RAB_RT) (GAPI)		MWD Collar RPM (CRPM_RT) (RPM)	Shallow Button Resistivity, Real-Time (RES_BS_RT) (OHMM)	Deep Button Resistivity, Real-Time (RES_BD_RT) (OHMM)	Bit Resistivity, Real-Time (RES_BIT_RT) (OHMM)	Ring Resistivity, Real-Time (RES_RING_RT) (OHMM)	Delta-T Compressional, Real-Time (DTCO_RT) (US/F)
0	200	0 250	0.2 200	0.2 200	0.2 200	0.2 200	40 240
ROP*5 (ROP5) (M/HR)	0	PKPK_RPM (Stick_RT) (RPM)					
200		0 500					







<p>ROP*5 (ROP5) (M/HR)</p> <p>200 0</p>	<p>PKPK_RPM (Stick_RT) (RPM)</p> <p>0 500</p>	<p>Ring Resistivity, Real-Time (RES_RING_RT)</p> <p>0.2 (OHMM) 200</p>	<p>Delta-T Compressional, Real-Time (DTCO_RT)</p> <p>40 (US/F) 240</p>
<p>RAB Gamma Ray, Real-Time (GR_RAB_RT)</p> <p>0 (GAPI) 200</p>	<p>MWD Collar RPM (CRPM_RT) (RPM)</p> <p>0 250</p>	<p>Bit Resistivity, Real-Time (RES_BIT_RT)</p> <p>0.2 (OHMM) 200</p>	
	<p>Deep Button Resistivity, Real-Time (RES_BD_RT)</p> <p>0.2 (OHMM) 200</p>	<p>Shallow Button Resistivity, Real-Time (RES_BS_RT)</p> <p>0.2 (OHMM) 200</p>	

PIP SUMMARY

GRRR_R PIP

RING_TR PIP

Delta-T Samples

IDEAL Version: ID13_0C_14

IDF