

IDEAL Version: ID13_0C_14

IDF

ARC8A-AA id13_0c_02

Format: LWD RT GVR SONIC Vertical Scale: 1:200

Graphics File Created: 26-Nov-2008 04:02

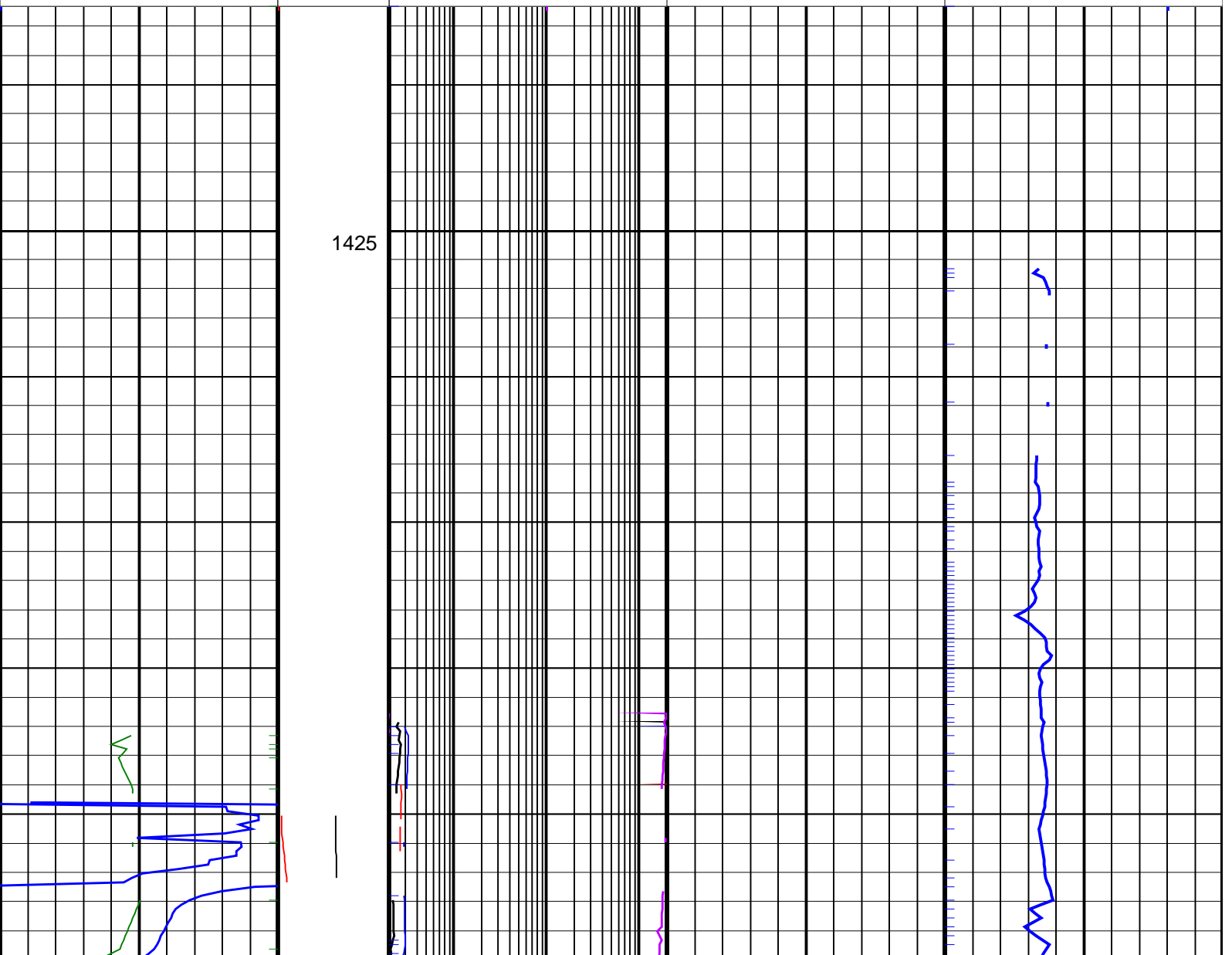
PIP SUMMARY

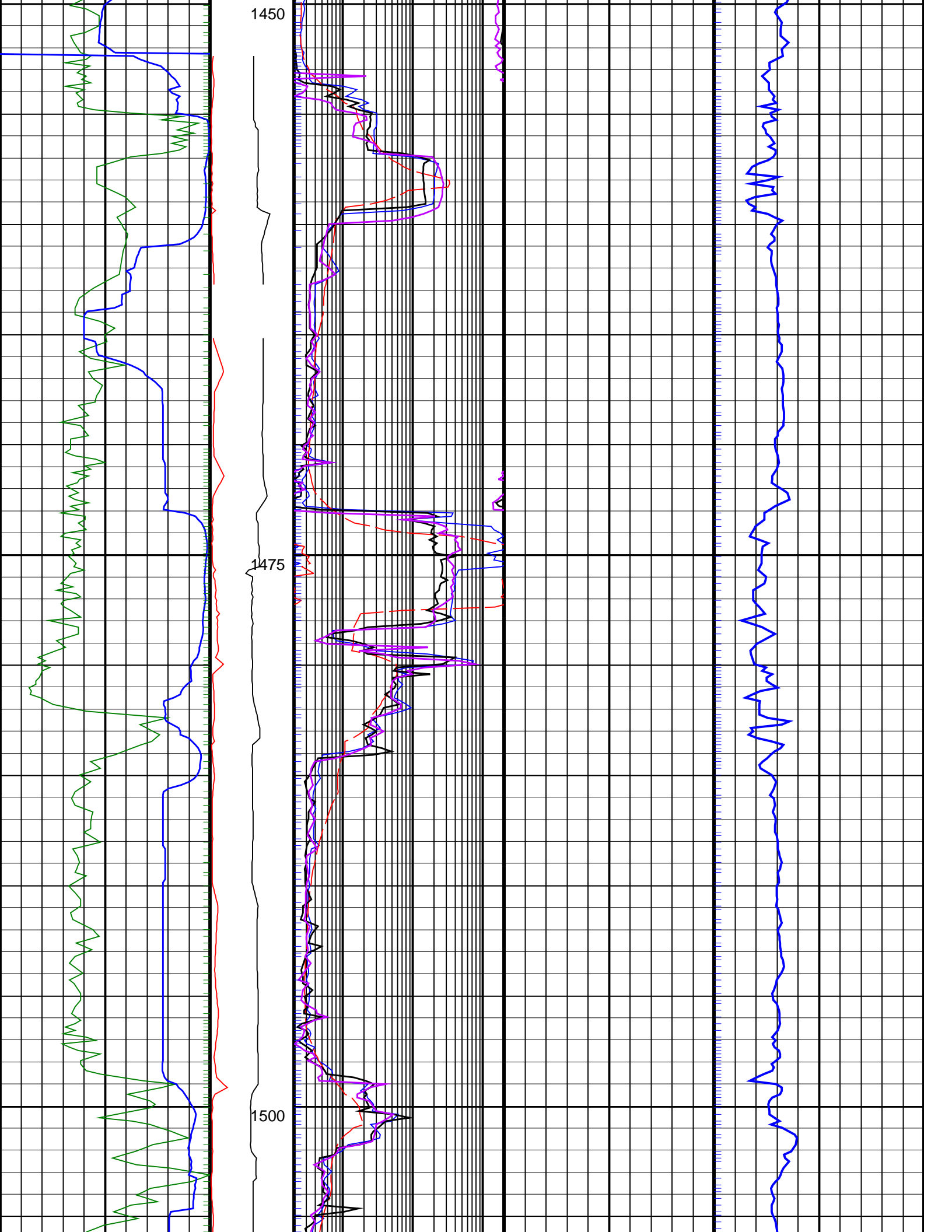
Delta-T Samples ↑

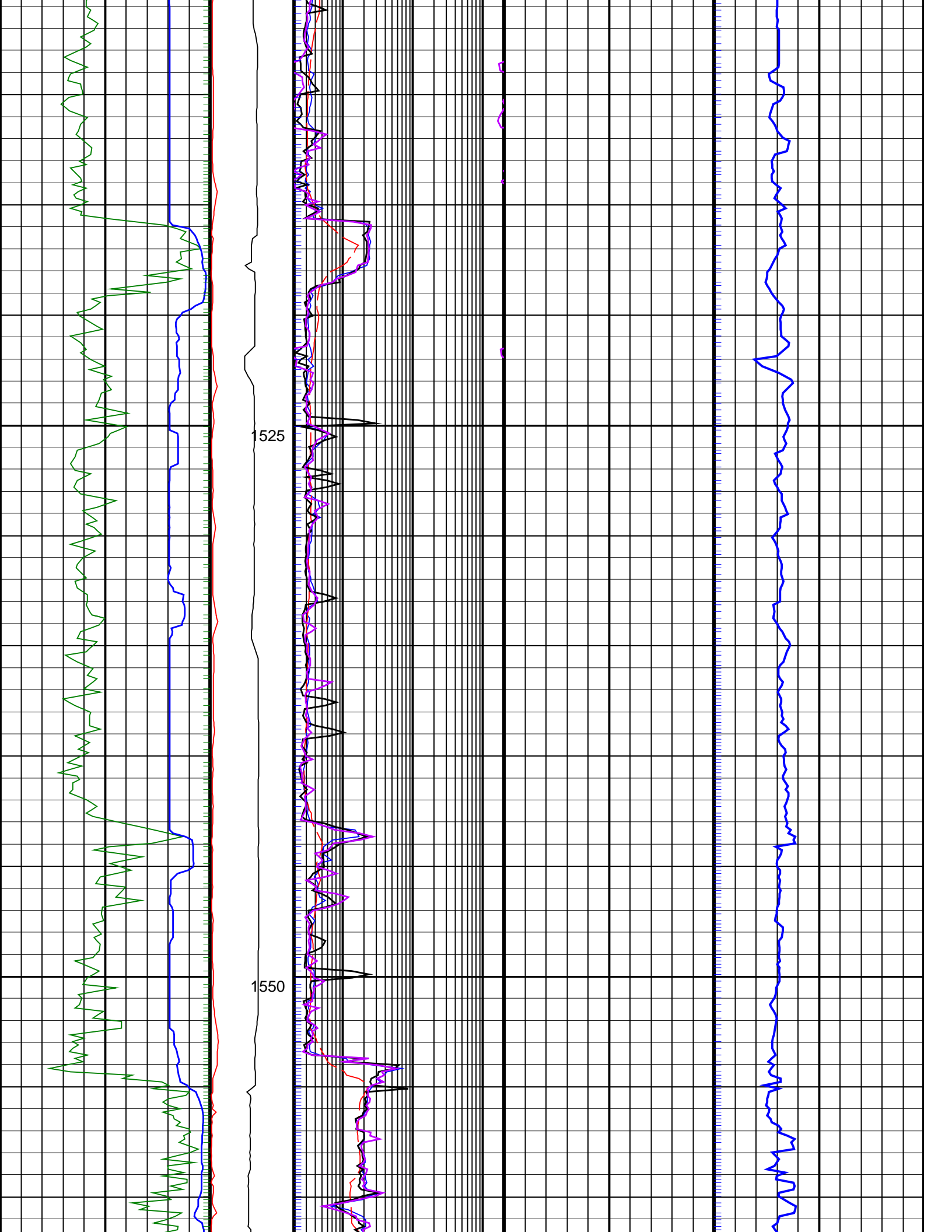
+ GRRR_R PIP

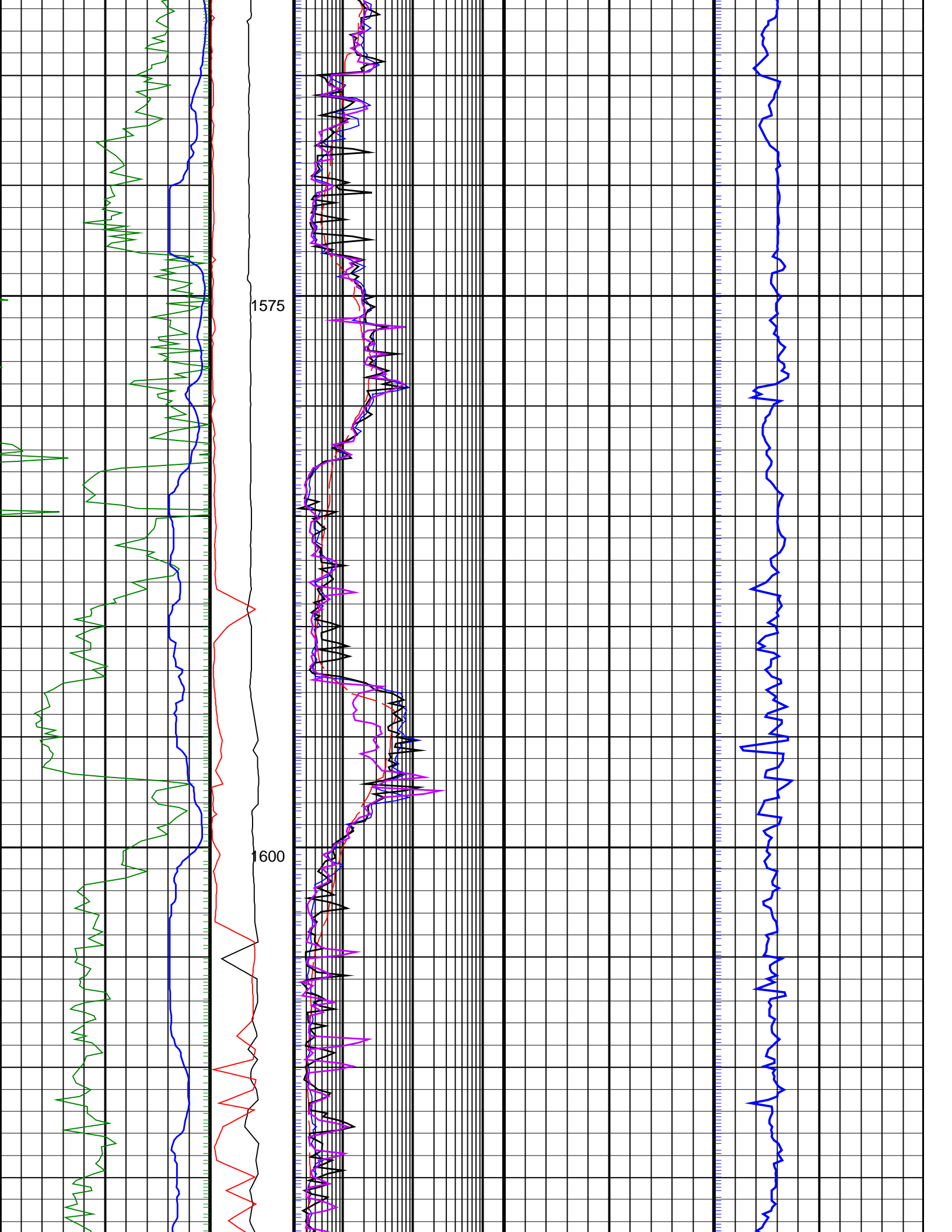
+ RING_TR PIP

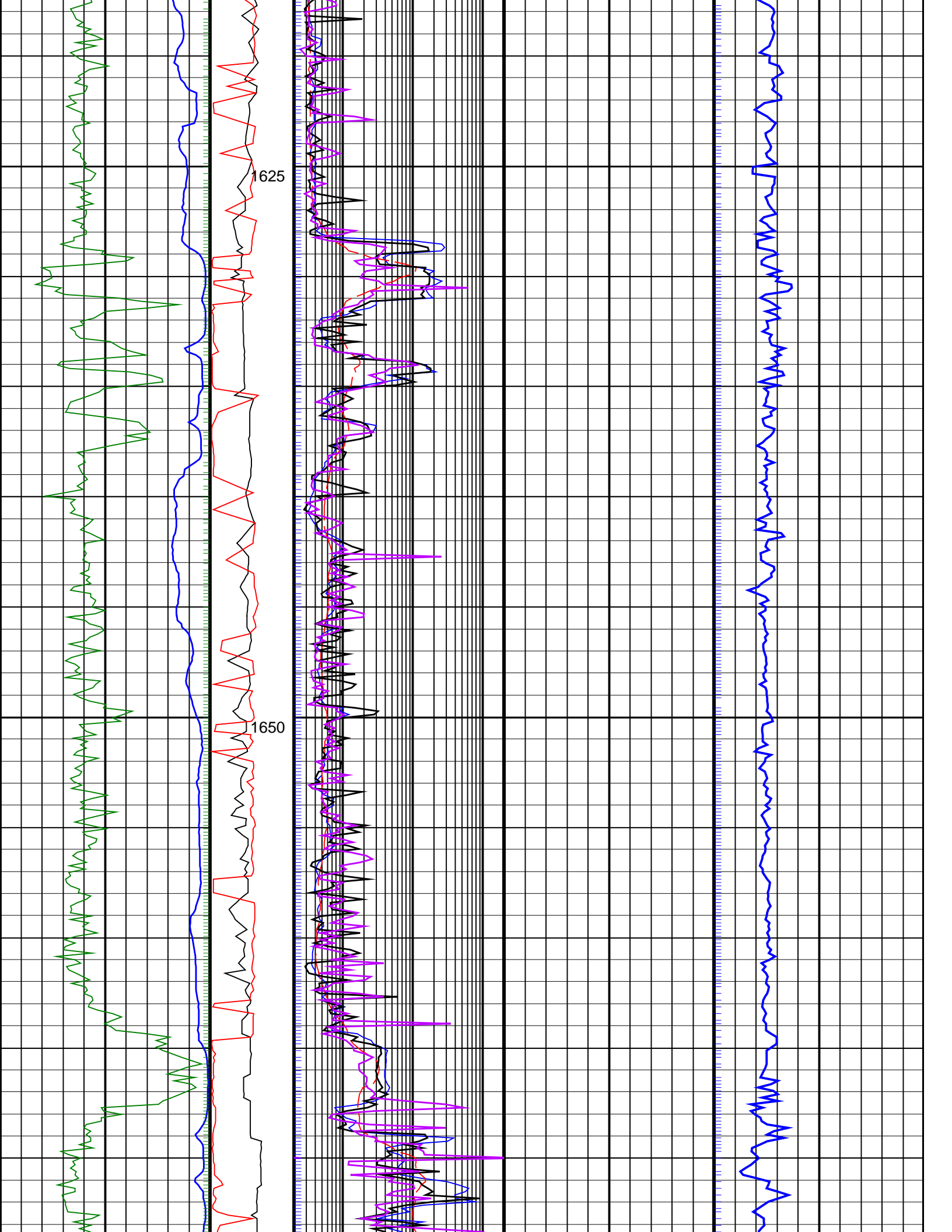
		Shallow Button Resistivity, Real-Time (RES_BS_RT)				
		0.2	(OHMM)	200		
		Deep Button Resistivity, Real-Time (RES_BD_RT)				
		0.2	(OHMM)	200		
RAB Gamma Ray, Real-Time (GR_RAB_RT)	MWD Collar RPM (CRPM_RT)	Bit Resistivity, Real-Time (RES_BIT_RT)				
0	(GAPI) 200	0.2	(OHMM)	200		
	0 250					
ROP*5 (ROP5)	PKPK_RPM (Stick_RT)	Ring Resistivity, Real-Time (RES_RING_RT)		Delta-T Compressional, Real-Time (DTCO_RT)		
200	(M/HR) 0	0.2	(OHMM)	200	40	(US/F) 240
	0 500					

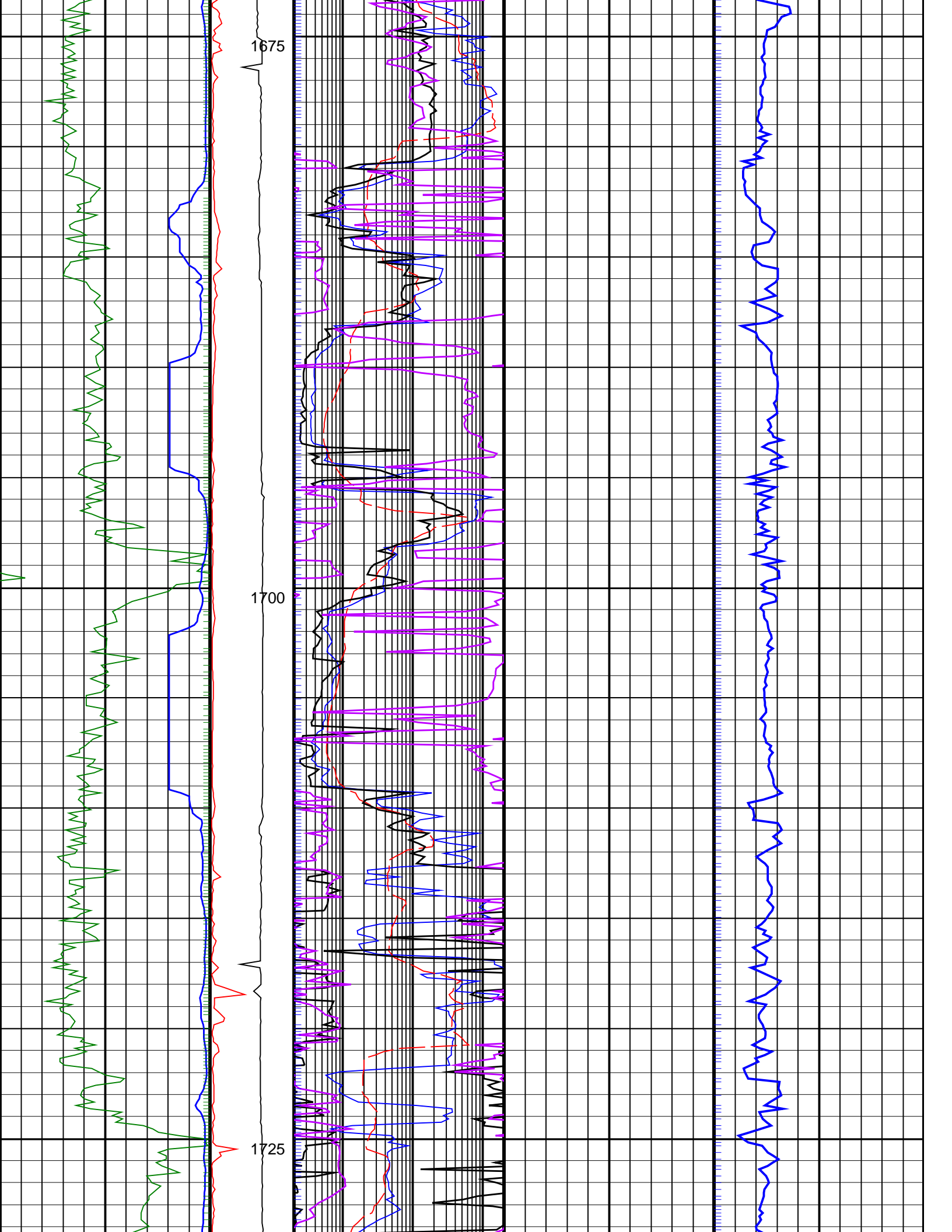


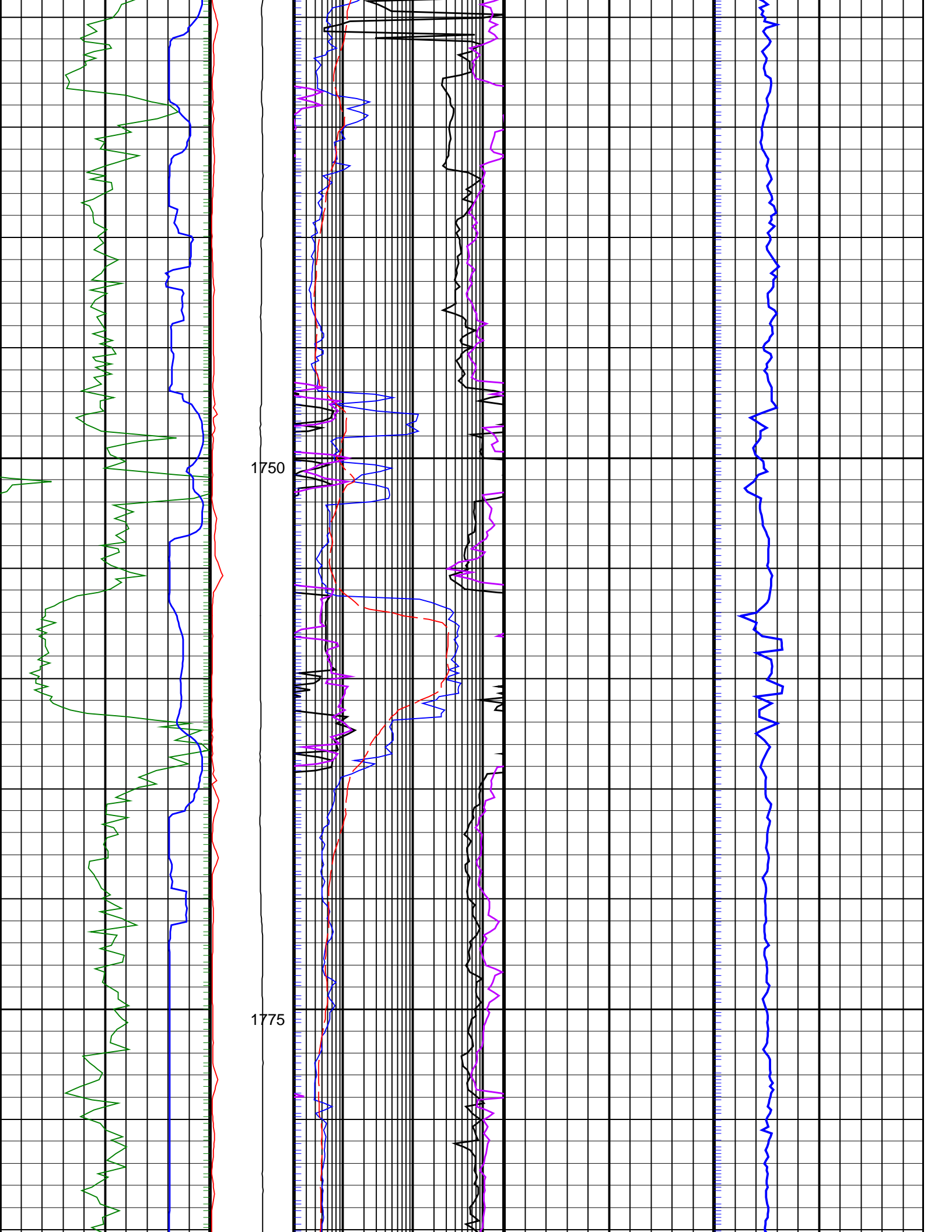


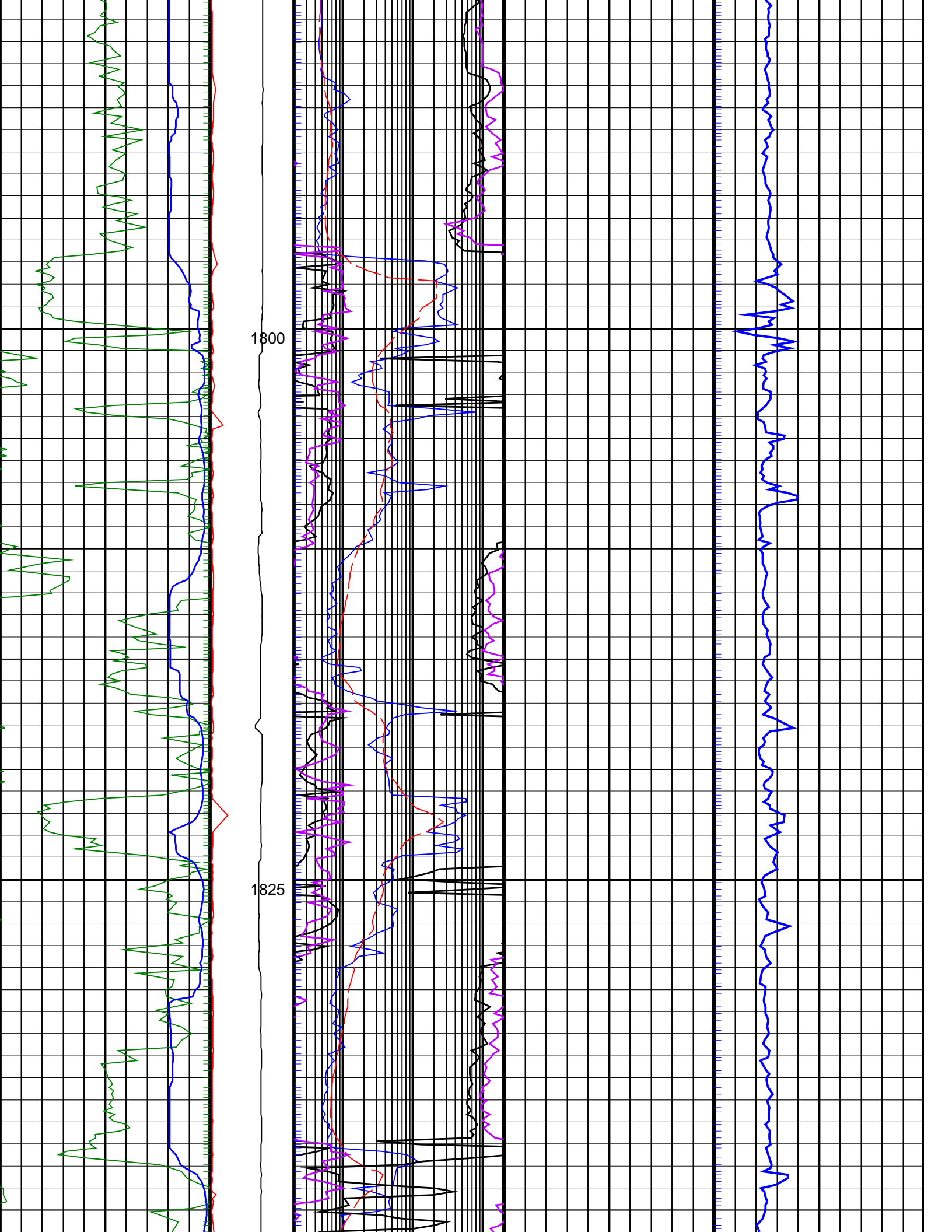


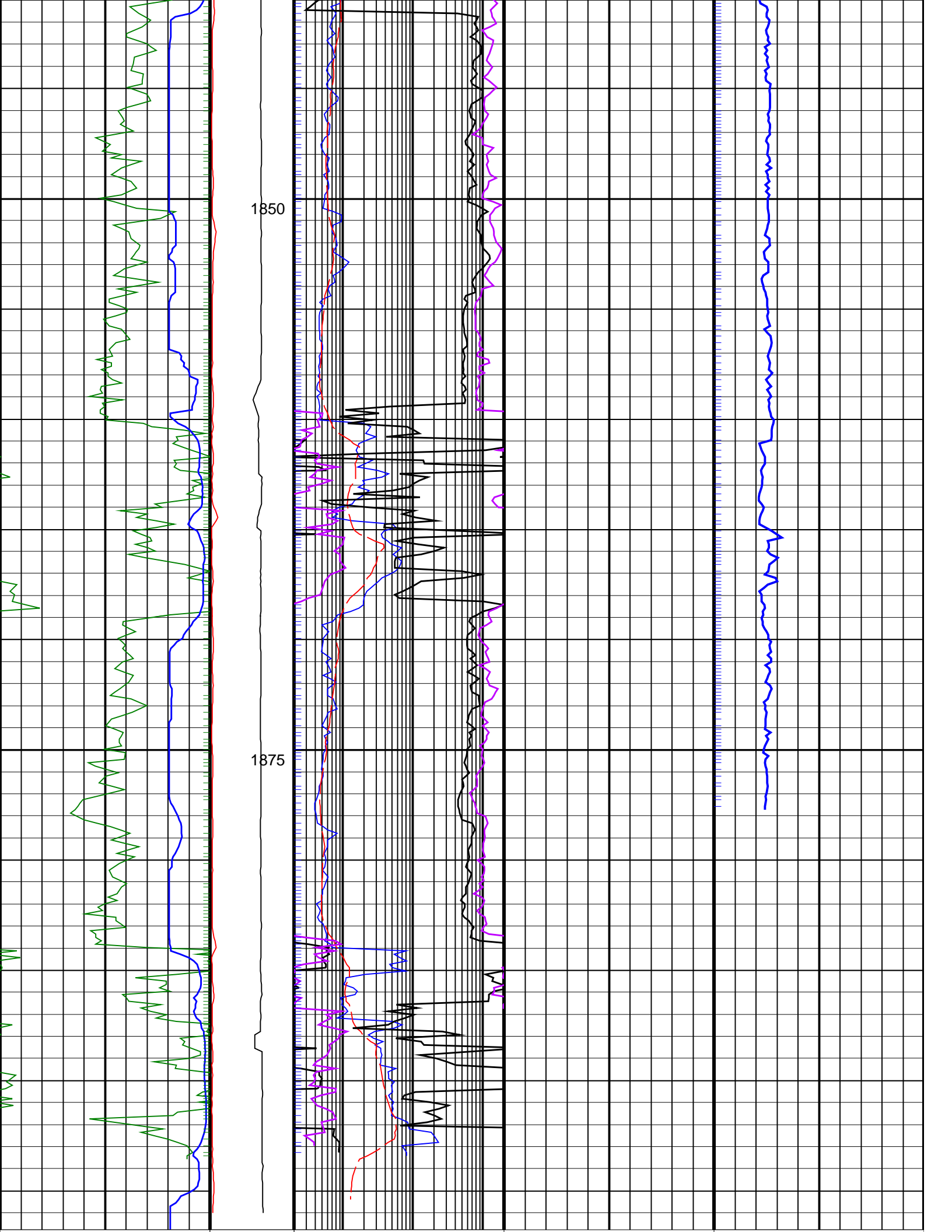












ROP*5 (ROP5)		PKPK_RPM (Stick_RT)	Ring Resistivity, Real-Time (RES_RING_RT)	Delta-T Compressional, Real-Time (DTCO_RT)
200	(M/HR)	0	0.2	40
		0	(OHMM)	(US/F)
		500	200	240
RAB Gamma Ray, Real-Time (GR_RAB_RT)		MWD Collar RPM	Bit Resistivity, Real-Time (RES_BIT_RT)	
0	(GAPI)	200	0.2	
		0	(OHMM)	
		250	200	
			Deep Button Resistivity, Real-Time (RES_BD_RT)	
			0.2	
			(OHMM)	
			200	
			Shallow Button Resistivity, Real-Time (RES_BS_RT)	
			0.2	
			(OHMM)	
			200	

PIP SUMMARY

Delta-T Samples

GRRR_R PIP

RING_TR PIP

IDEAL Version: ID13_0C_14

IDF

ARC8A-AA

id13_0c_02