

IDEAL Version: ID13_0C_14

IDF

Format: LWD RT GVR SONIC

Vertical Scale: 1:200

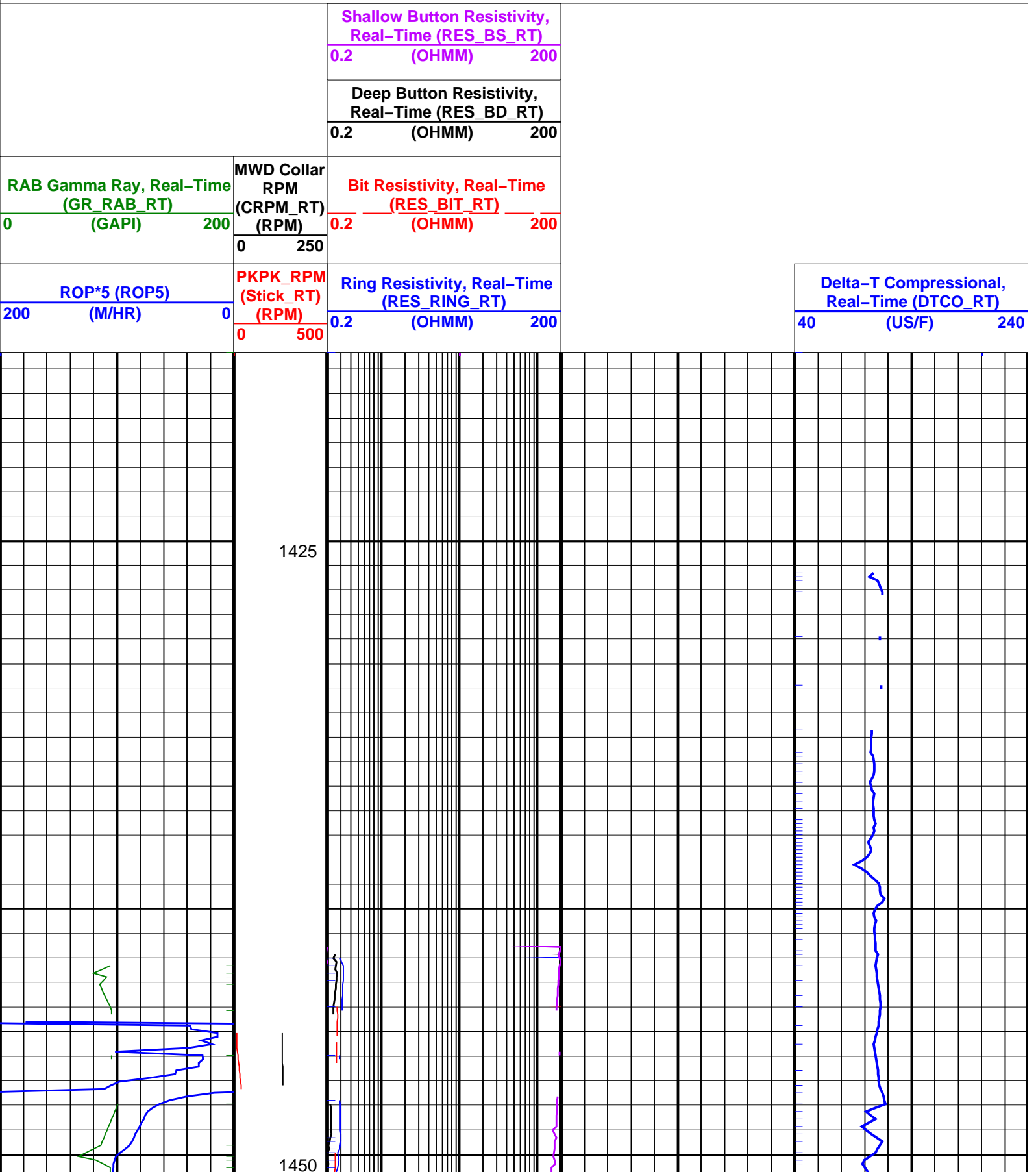
Graphics File Created: 25-Nov-2008 13:27

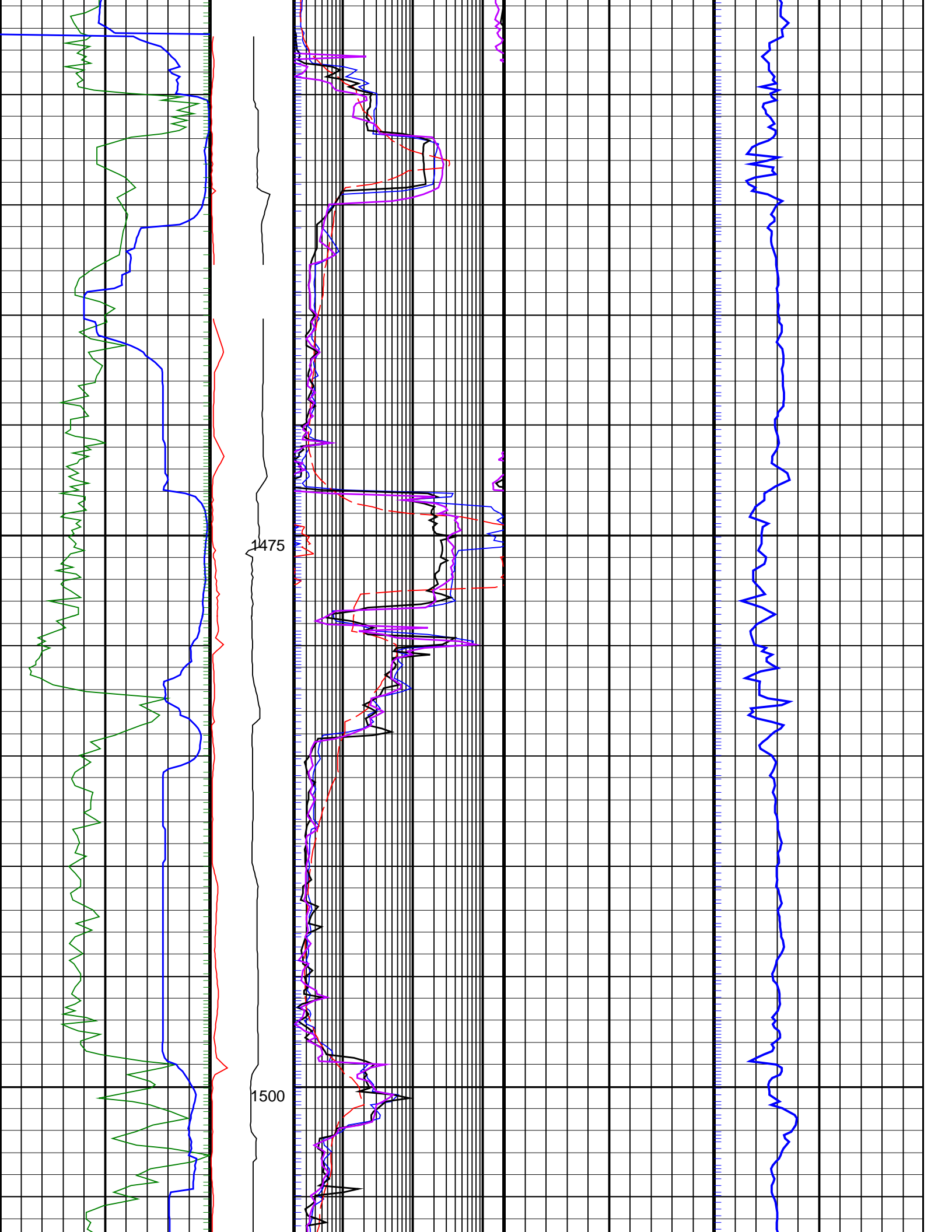
PIP SUMMARY

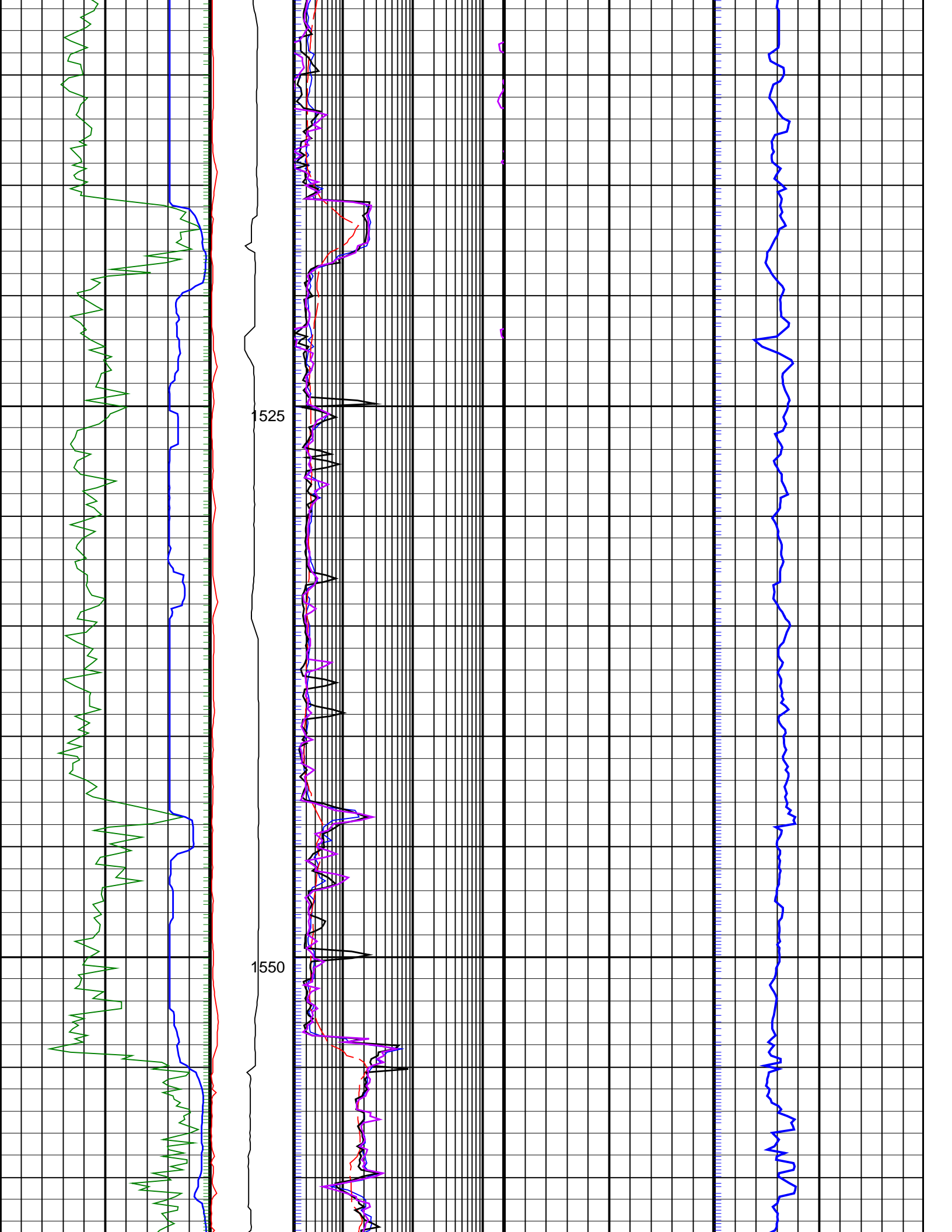
Delta-T Samples ↑

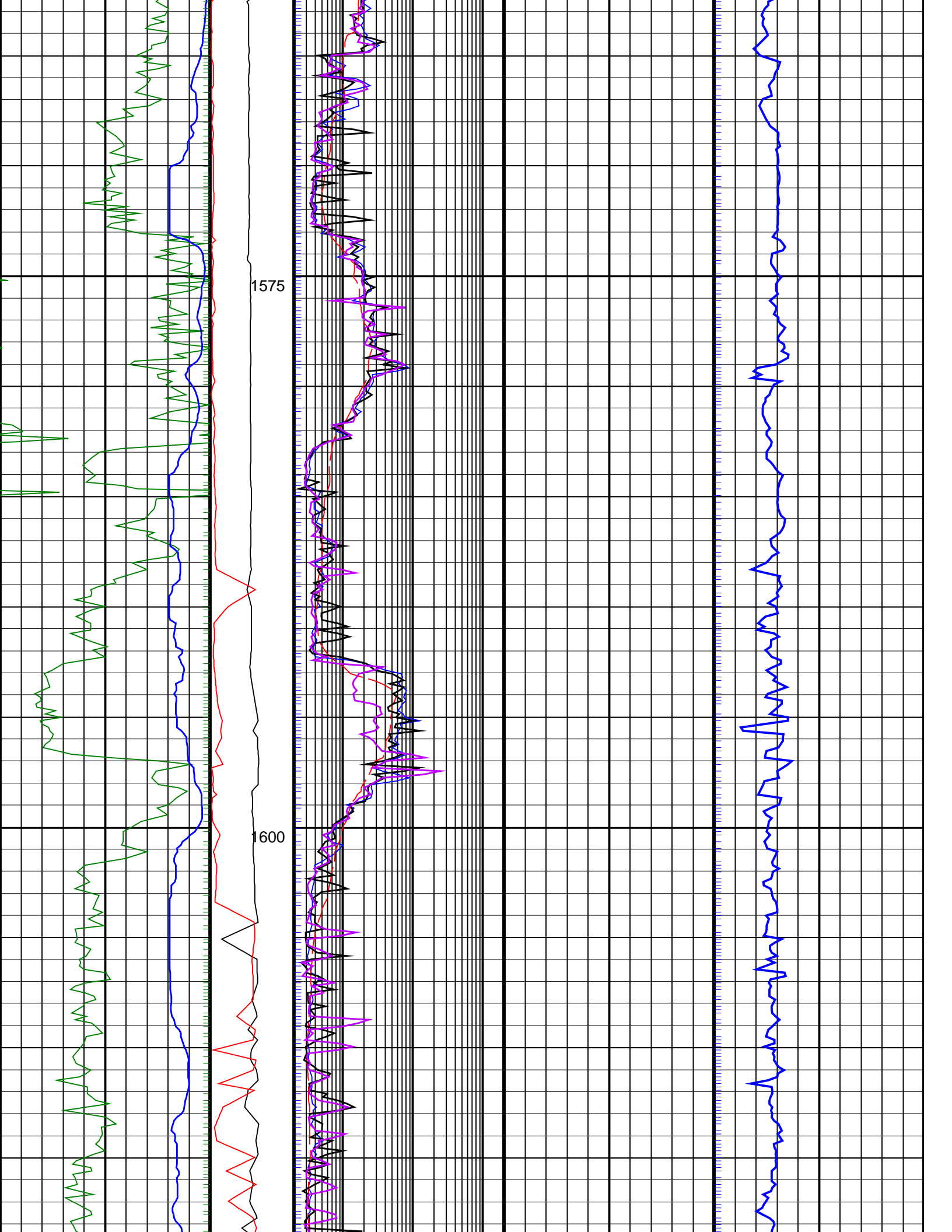
+ GRRR_R PIP

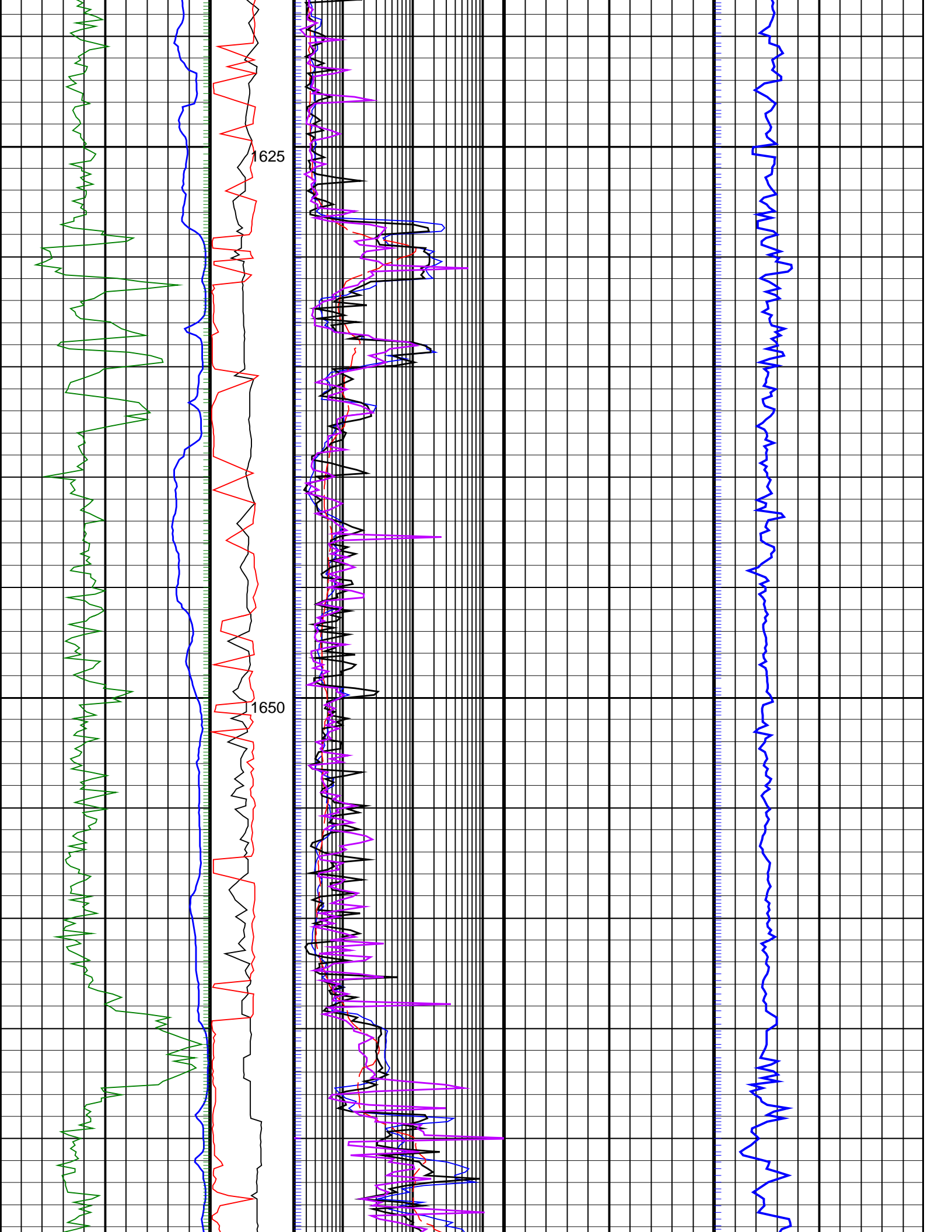
+ RING_TR PIP

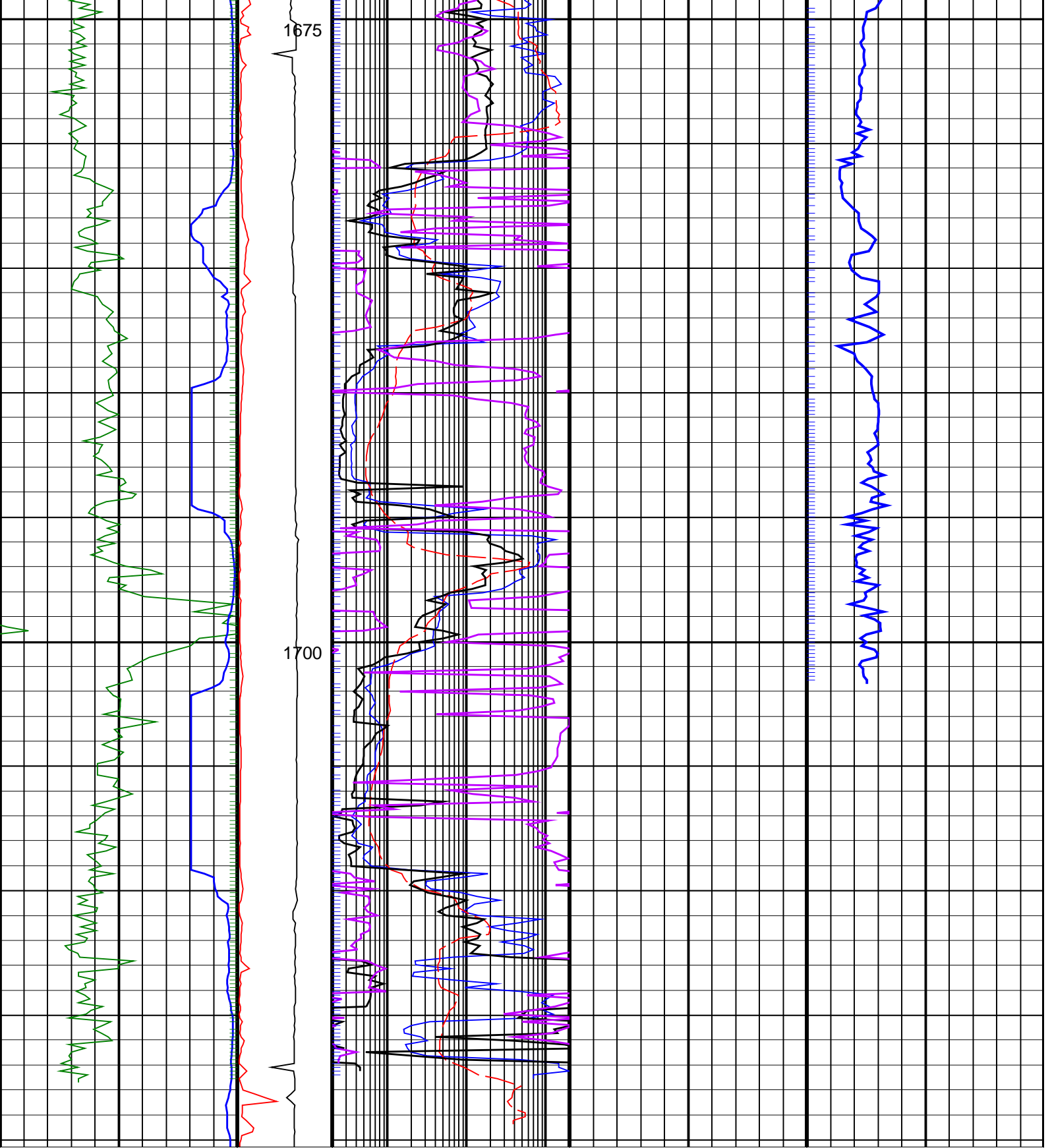












<p>ROP*5 (ROP5) (M/HR)</p> <p>0 200</p>	<p>PKPK_RPM (Stick_RT) (RPM)</p> <p>0 500</p>	<p>Ring Resistivity, Real-Time (RES_RING_RT) (OHMM)</p> <p>0.2 200</p>	<p>Delta-T Compressional, Real-Time (DTCO_RT) (US/F)</p> <p>40 240</p>
<p>RAB Gamma Ray, Real-Time (GR_RAB_RT) (GAPI)</p> <p>0 200</p>	<p>MWD Collar RPM (CRPM_RT) (RPM)</p> <p>0 250</p>	<p>Bit Resistivity, Real-Time (RES_BIT_RT) (OHMM)</p> <p>0.2 200</p>	
		<p>Deep Button Resistivity, Real-Time (RES_BD_RT)</p>	

0.2	(OHMM)	200
Shallow Button Resistivity, Real-Time (RES_BS_RT)		
0.2	(OHMM)	200

PIP SUMMARY

+ GRRR_R PIP

+ RING_TR PIP

Delta-T Samples +

IDEAL Version: ID13_0C_14
IDF