

IDEAL Version: ID13_0C_14

IDF

ARC8A-AA id13_0c_02

Format: LWD RT GVR SONIC Vertical Scale: 1:200

Graphics File Created: 25-Nov-2008 04:07

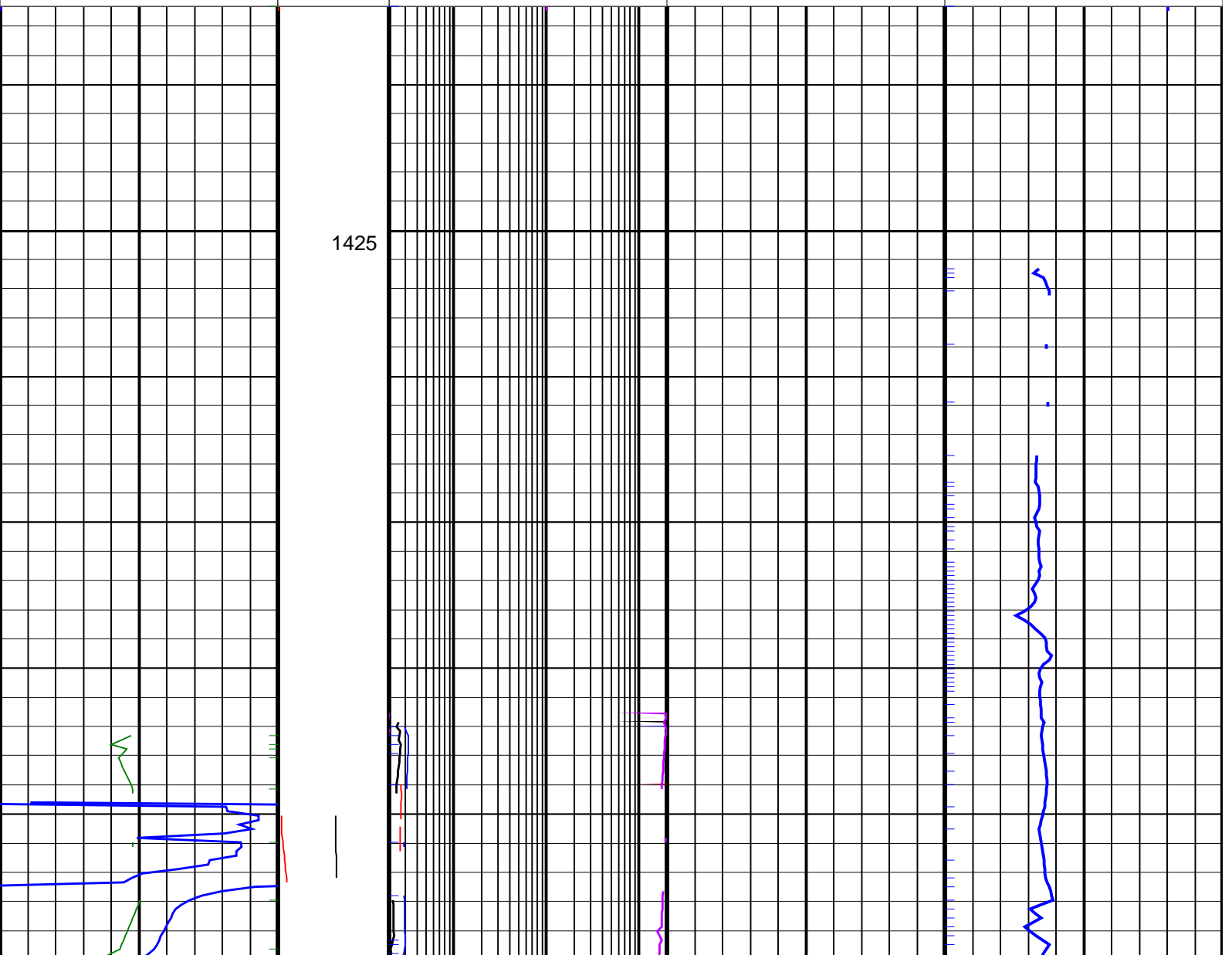
PIP SUMMARY

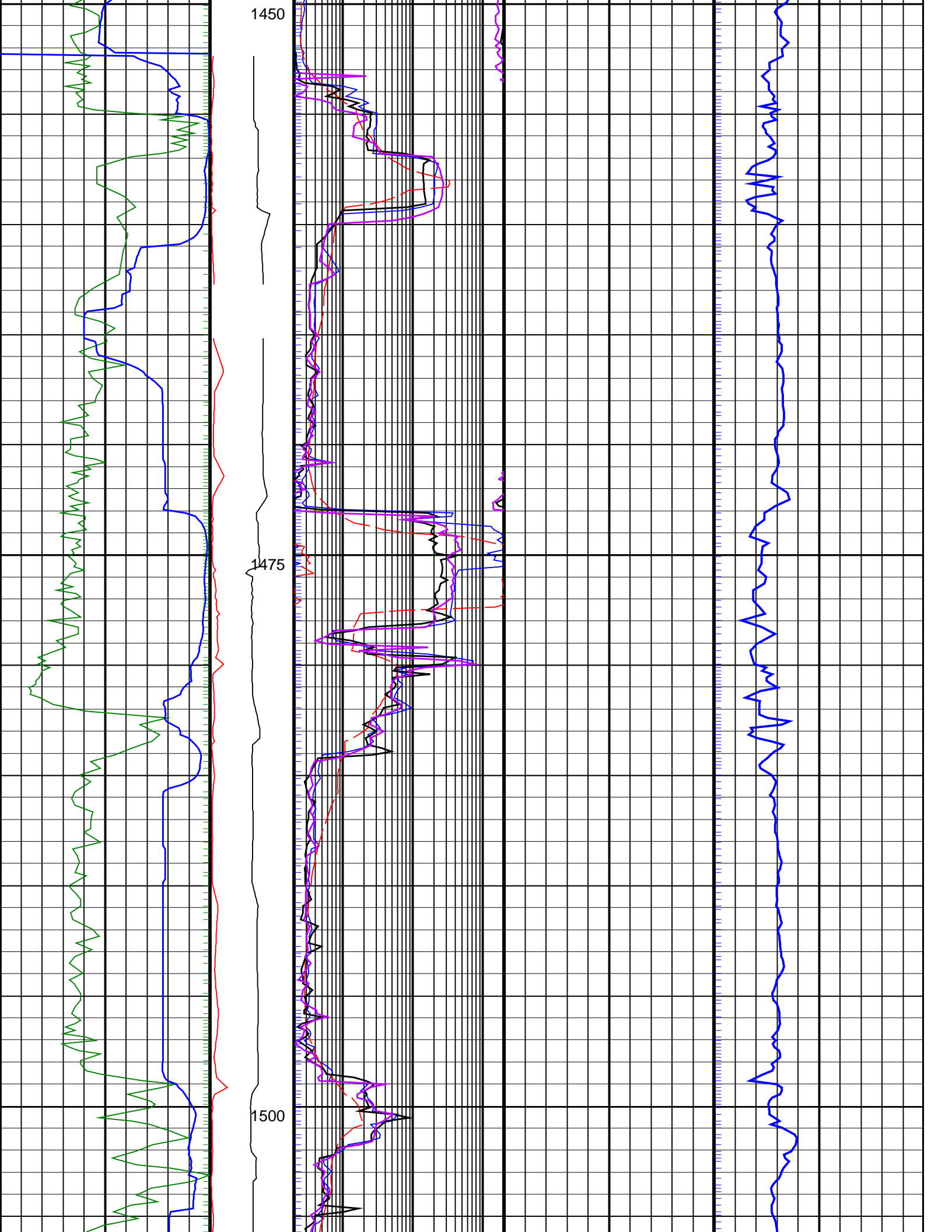
Delta-T Samples ↑

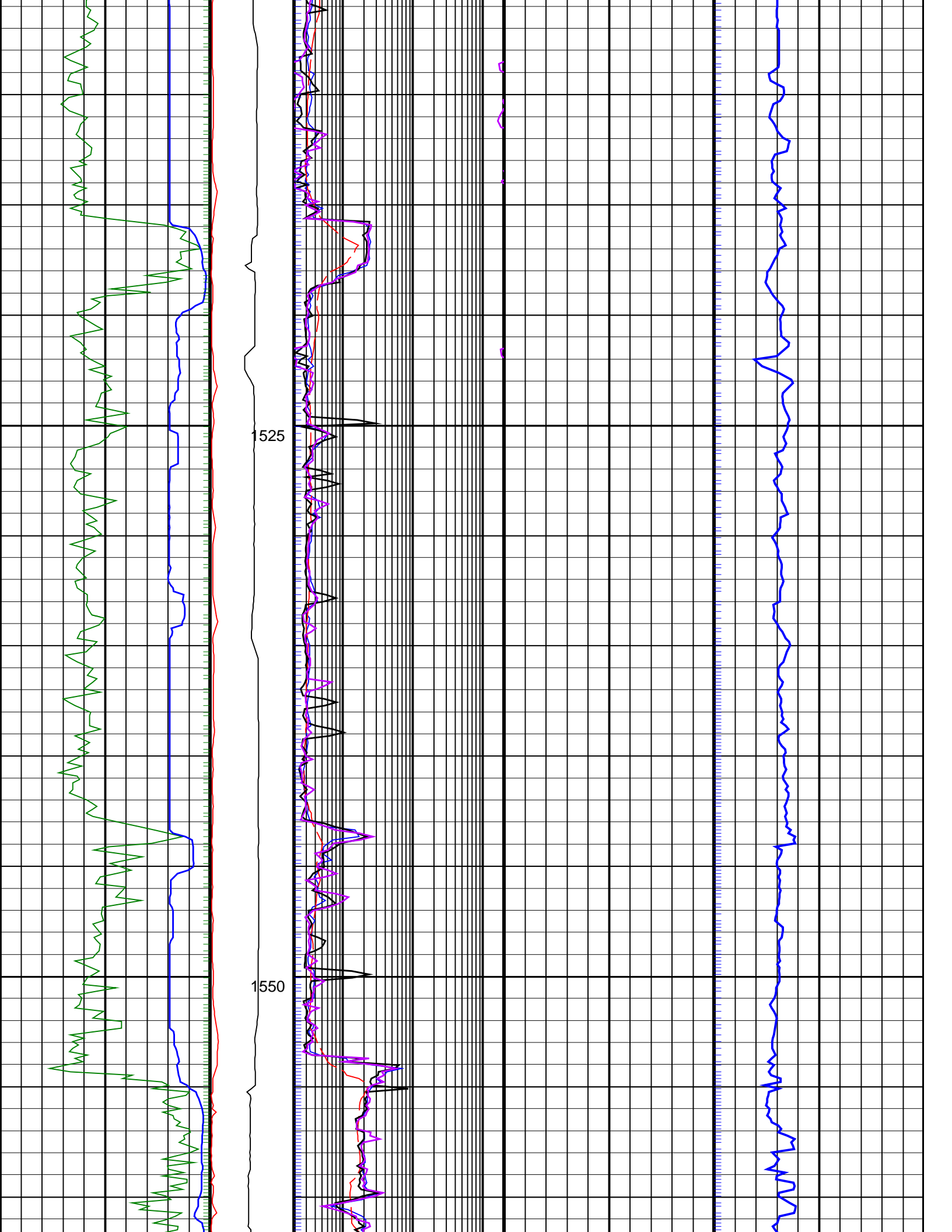
+ GRRR_R PIP

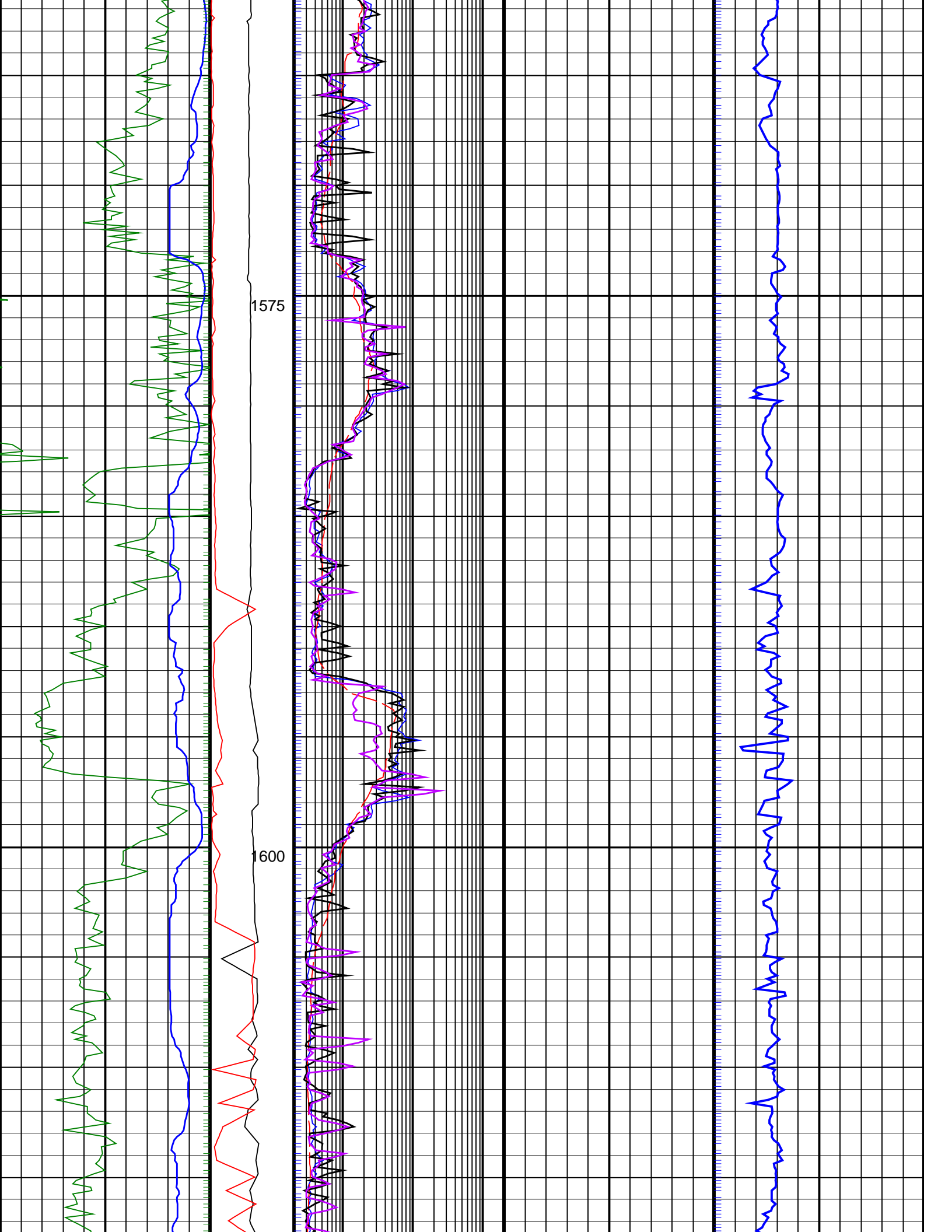
+ RING_TR PIP

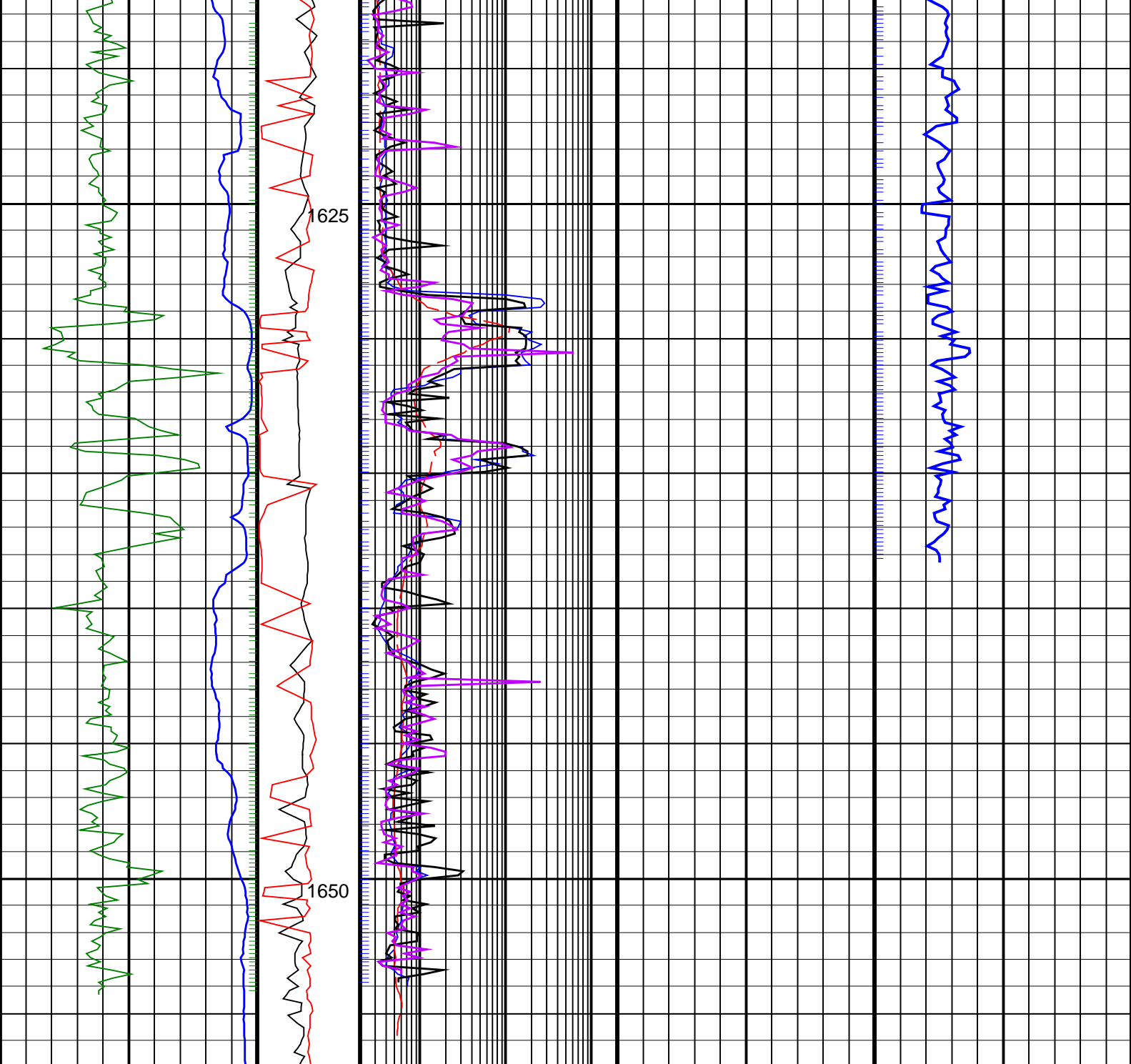
		Shallow Button Resistivity, Real-Time (RES_BS_RT)				
		0.2	(OHMM)	200		
		Deep Button Resistivity, Real-Time (RES_BD_RT)				
		0.2	(OHMM)	200		
RAB Gamma Ray, Real-Time (GR_RAB_RT)	MWD Collar RPM (CRPM_RT)	Bit Resistivity, Real-Time (RES_BIT_RT)				
0	(GAPI) 200	0.2	(OHMM)	200		
	0 250					
ROP*5 (ROP5)	PKPK_RPM (Stick_RT)	Ring Resistivity, Real-Time (RES_RING_RT)		Delta-T Compressional, Real-Time (DTCO_RT)		
200	(RPM) 0	0.2	(OHMM)	200	40	(US/F) 240
	0 500					











ROP*5 (ROP5) 200 (M/HR) 0	PKPK RPM (Stick_RT) (RPM) 0 500	Ring Resistivity, Real-Time (RES_RING_RT) 0.2 (OHMM) 200	Delta-T Compressional, Real-Time (DTCO_RT) 40 (US/F) 240
RAB Gamma Ray, Real-Time (GR_RAB_RT) 0 (GAPI) 200	MWD Collar RPM (CRPM_RT) (RPM) 0 250	Bit Resistivity, Real-Time (RES_BIT_RT) 0.2 (OHMM) 200	
		Deep Button Resistivity, Real-Time (RES_BD_RT) 0.2 (OHMM) 200	
		Shallow Button Resistivity, Real-Time (RES_BS_RT) 0.2 (OHMM) 200	

PIP SUMMARY

Delta-T Samples +

IDEAL Version: ID13_0C_14
IDF

ARC8A-AA

id13_0c_02