

PeeJay1_Run2_RT_500MD

IDF

Format: LWD RT Log Vertical Scale: 1:500 Graphics File Created: 23-Nov-2008 04:43

PIP SUMMARY

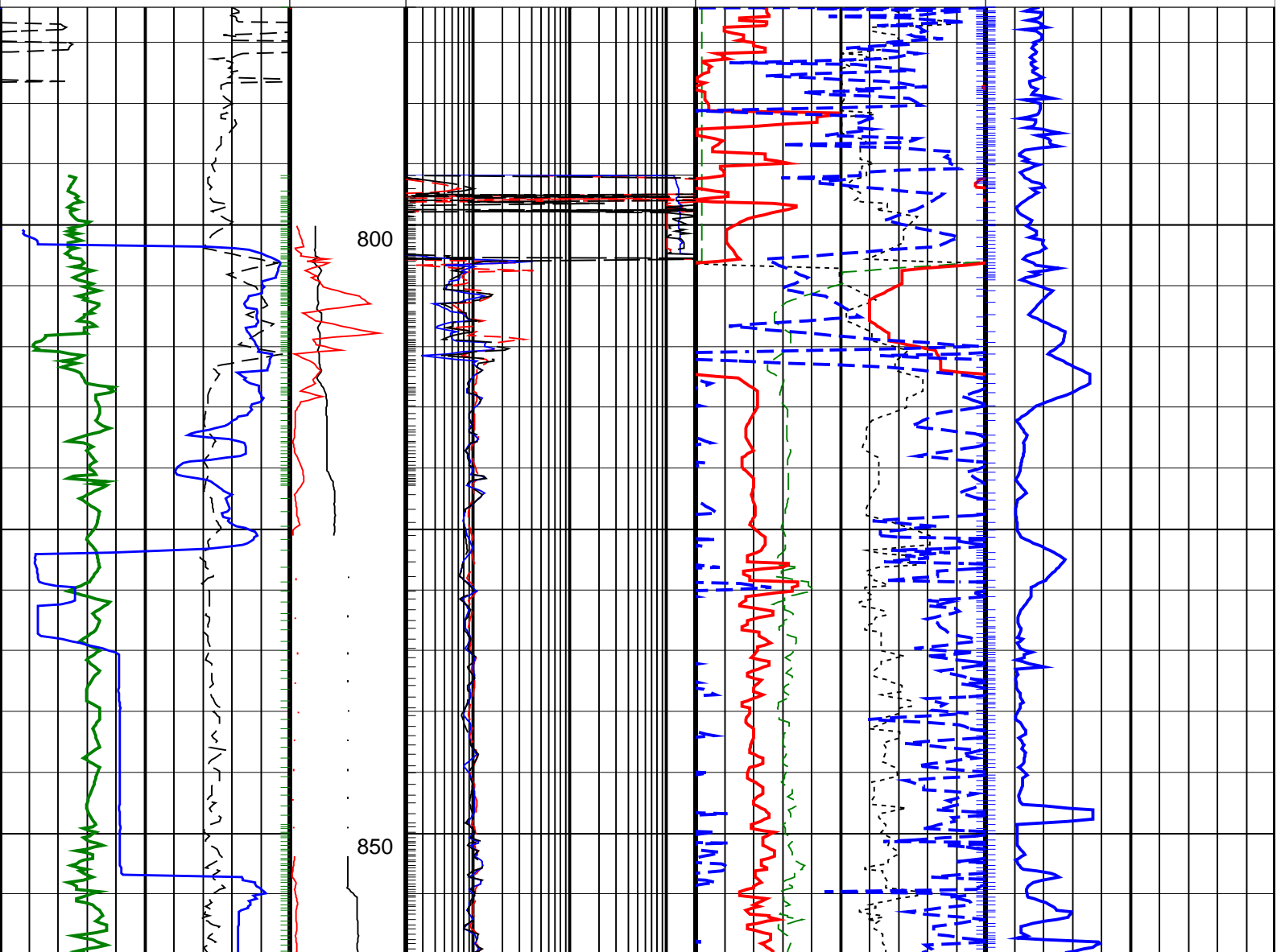
┆ Gamma Ray Samples

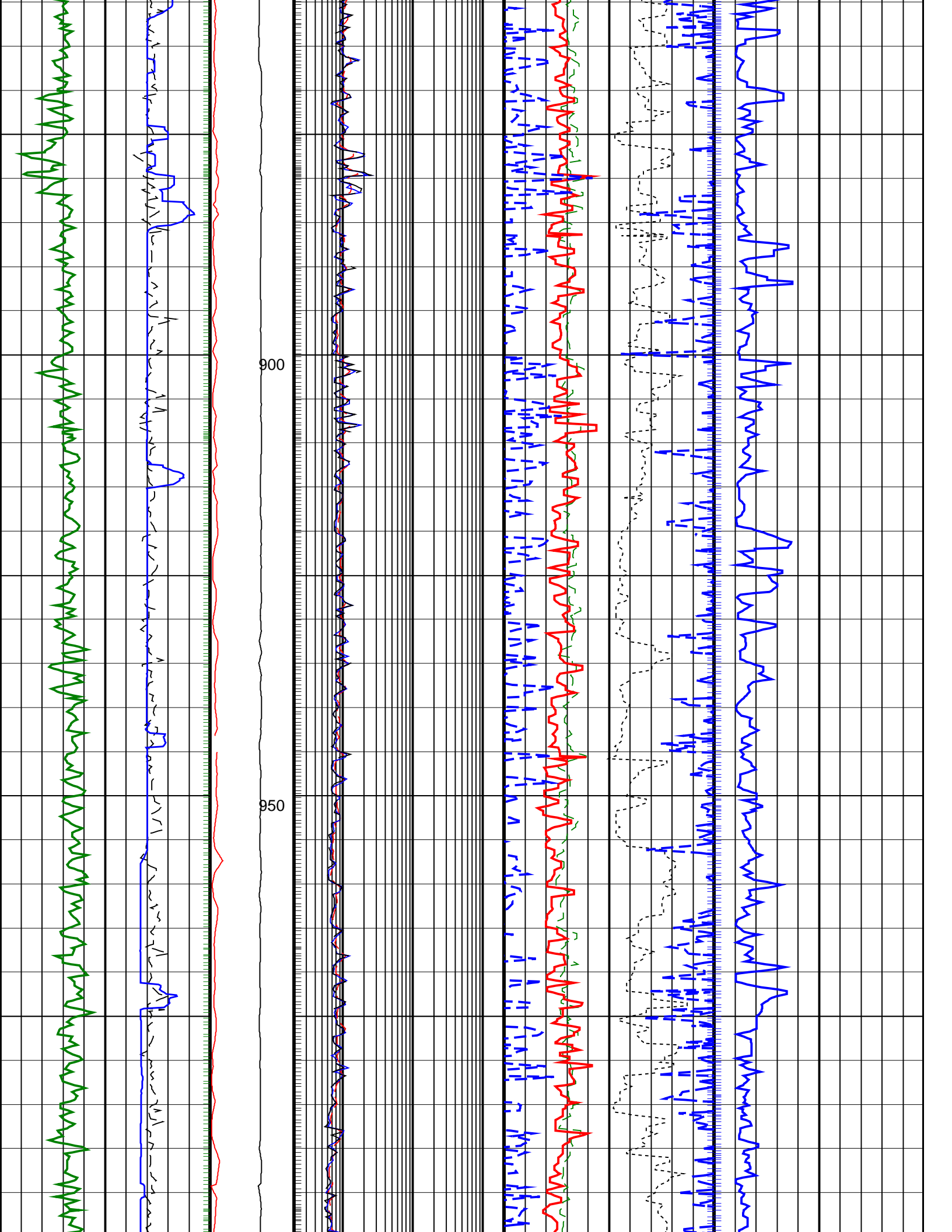
Delta-T Samples ┆

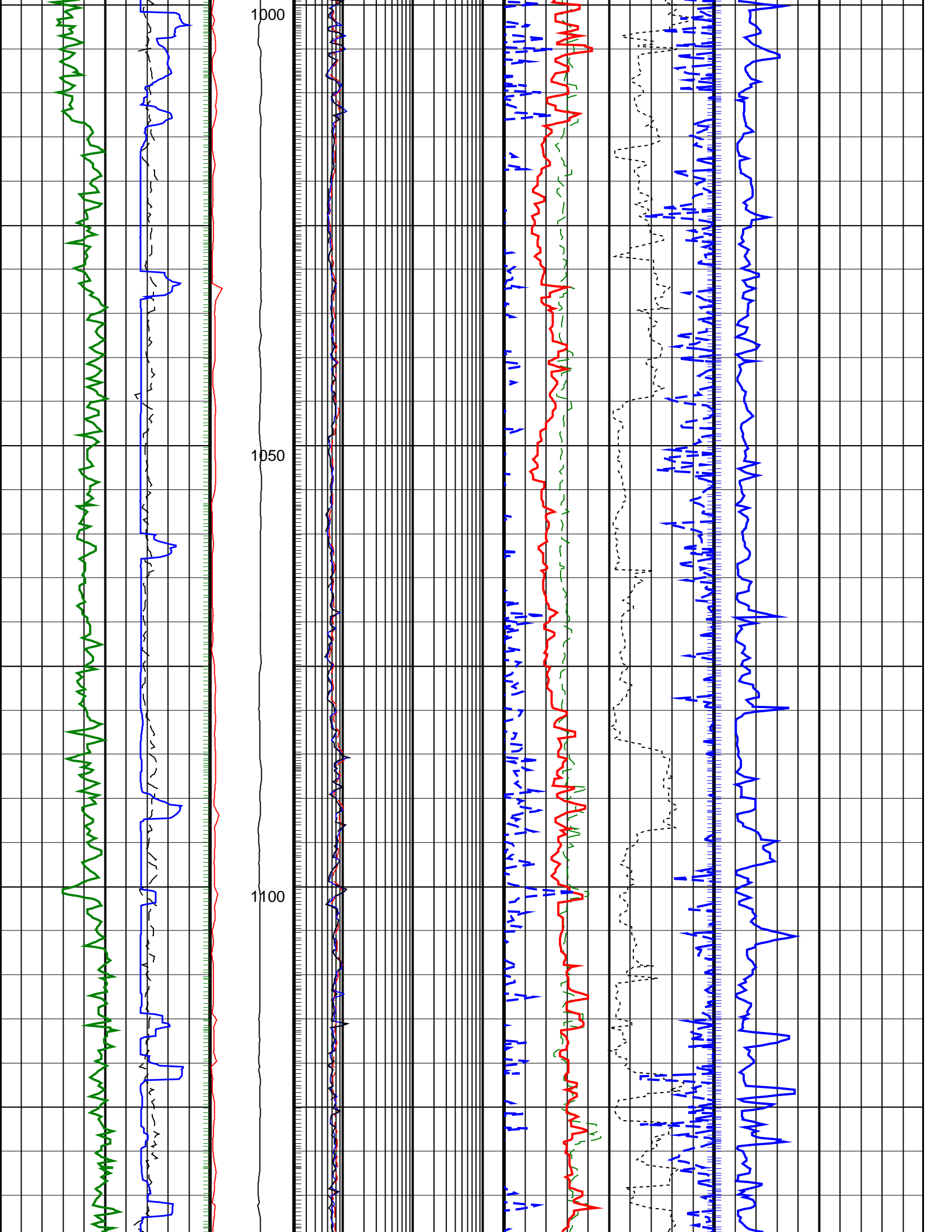
┆ Resistivity Samples

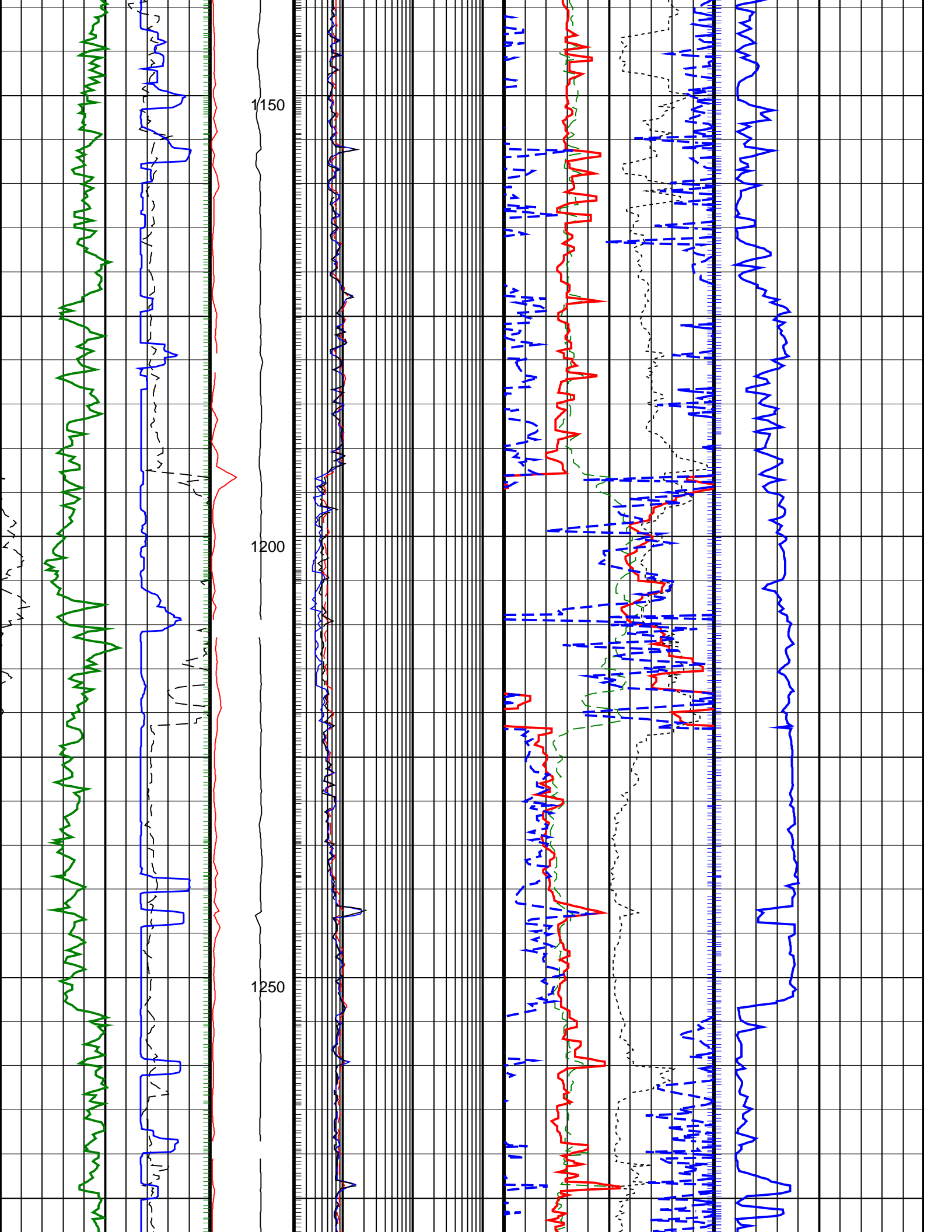
Neutron Samples ┆

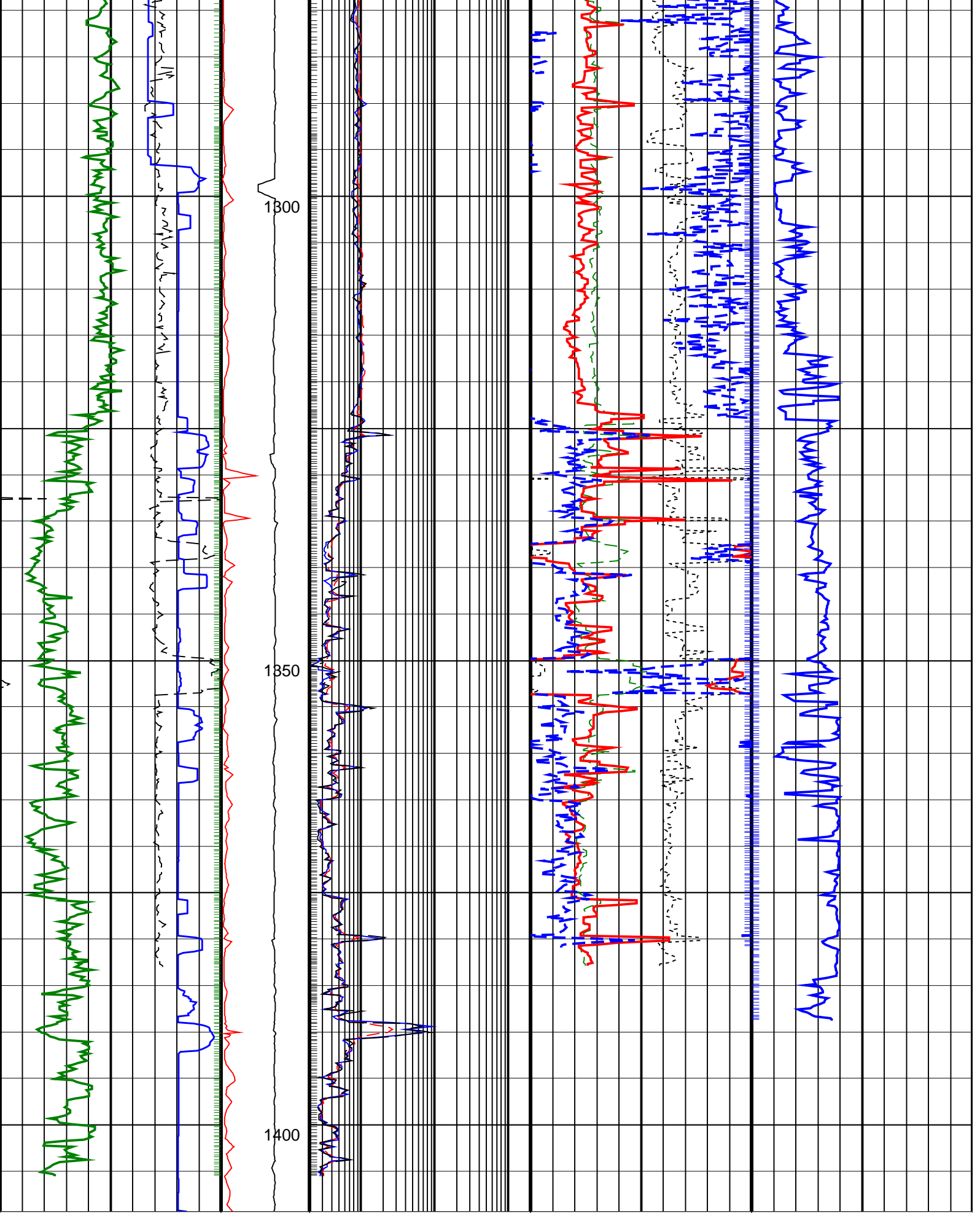
		Thermal Neutron Porosity, Real-Time (TNPH_ADN_RT) 45 (PU) -15	
ARC Gamma Ray, Real-Time (ARC_GR_RT) 0 (GAPI) 200		Photoelectric Factor, Real-Time (PEF_ADN_RT) 0 (----) 10	
Average Borehole Diameter, Real-Time (ADIA_ADN_RT) 6 (IN) 16		Bulk Density Correction, Real-Time Computed Downhole (DRHO_DH_ADN_RT) -0.25 (G/C3) 0.25	
ROP*5 (ROP5) 200 (M/HR) 0		Delta-T Compressional, Real-Time (DTCO_RT) 40 (US/F) 240	
MWD Collar RPM (CRPM_RT) (RPM) 0 250	ARC BHCorr Phase-Shift Resistivity 40-in. at 2 MHz, Real-Time (P40H_RT) 0.2 (OHMM) 200	ARC BHCorr Phase-Shift Resistivity 16-in. at 2 MHz, Real-Time (P16H_RT) 0.2 (OHMM) 200	Bulk Density, Real-Time Computed Downhole (RHOB_ DH_ADN_RT) 1.95 (G/C3) 2.95
PKPK_RPM (Stick_RT) (RPM) 0 500	ARC BHCorr Attenuation Resistivity 40-in. at 2 MHz, Real-Time (A40H_RT) 0.2 (OHMM) 200		











<p>ROP*5 (ROP5) (M/HR)</p> <p>200 0</p>	<p>PKPK_RPM (Stick_RT) (RPM)</p> <p>0 500</p>	<p>ARC BHCorr Attenuation Resistivity 40-in. at 2 MHz, Real-Time (A40H_RT) (OHMM)</p> <p>0.2 200</p>	<p>Bulk Density, Real-Time Computed Downhole (RHOB_DH_ADN_RT) (G/C3)</p> <p>1.95 2.95</p>	<p>Delta-T Compressional, Real-Time (DTCO_RT) (US/F)</p> <p>40 240</p>
--	--	---	--	---

Average Borehole Diameter, Real-Time (ADIA_ADN_RT) 6 (IN) 16	MWD Collar RPM (CRPM_RT) (RPM) 0 250	ARC BHCorr Phase-Shift Resistivity 16-in. at 2 MHz, Real-Time (P16H_RT) 0.2 (OHMM) 200	Bulk Density Correction, Real-Time Computed Downhole (DRHO_DH_ADN_ RT) -0.25 (G/C3) 0.25
ARC Gamma Ray, Real-Time (ARC_GR_RT) 0 (GAPI) 200		ARC BHCorr Phase-Shift Resistivity 40-in. at 2 MHz, Real-Time (P40H_RT) 0.2 (OHMM) 200	Photoelectric Factor, Real-Time (PEF_ADN_RT) 0 (----) 10
			Thermal Neutron Porosity, Real-Time (TNPH_ADN_RT) 45 (PU) -15

PIP SUMMARY

⊞ Gamma Ray Samples

Delta-T Samples ⊞

⊞ Resistivity Samples

Neutron Samples ⊞

IDEAL Version: ID13_0C_14
IDF